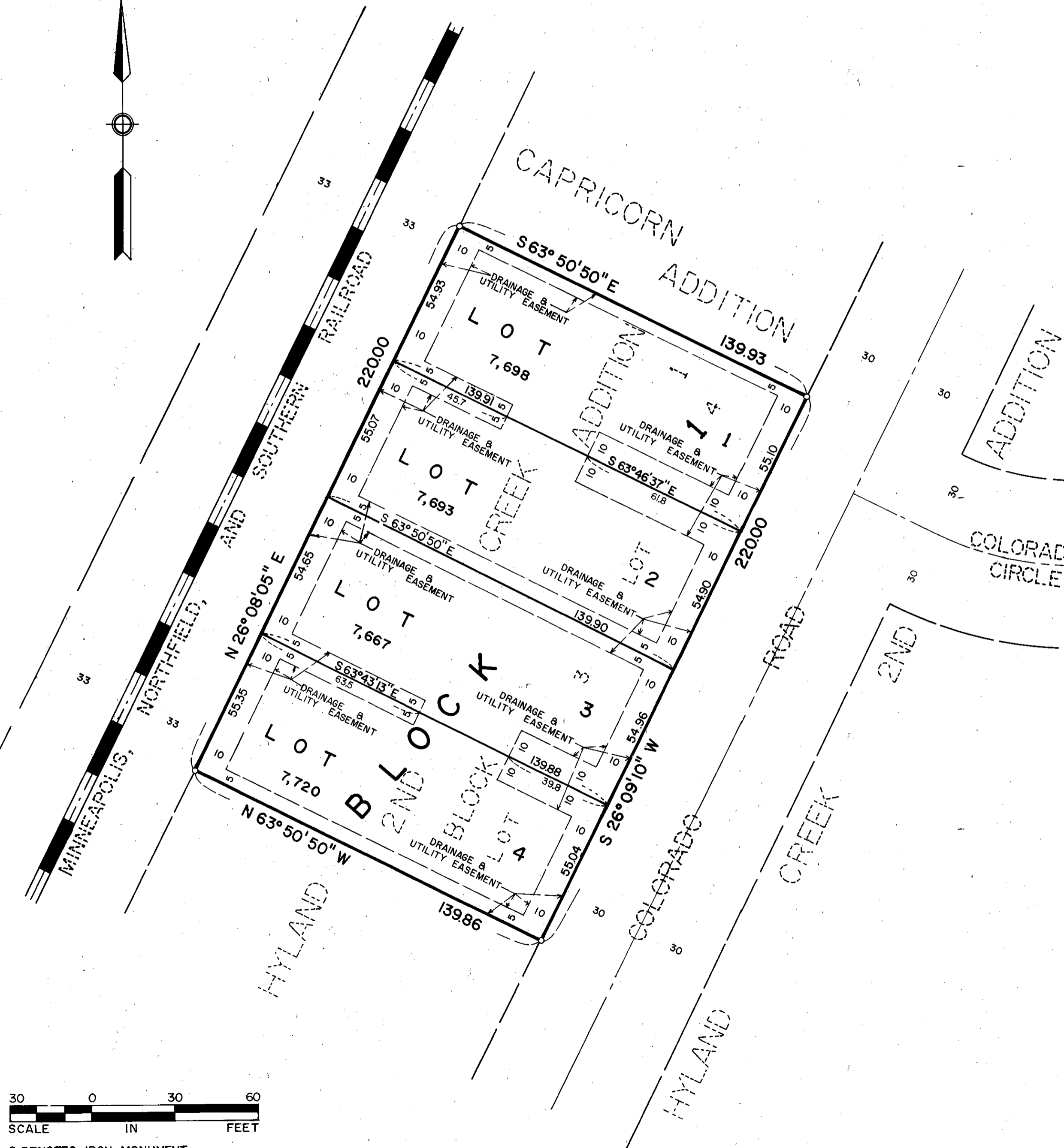


HYLAND CREEK 3RD ADDITION

R. T. DOC. NO. _____



30 0 30 60
SCALE IN FEET

○ DENOTES IRON MONUMENT
BEARINGS SHOWN ARE ASSUMED

KNOW ALL MEN BY THESE PRESENTS: That John A. Symington and Unni Symington, his wife, owners and proprietors, and FIRST SOUTHDALE NATIONAL BANK OF EDINA, a United States of America Corporation, mortgagee of the following described property situated in the County of Hennepin, State of Minnesota, to wit:

Lots 3 and 4, Block 1, HYLAND CREEK 2ND ADDITION, according to the plat thereof on file or of record in the office of the Registrar of Titles in and for said County.

Have caused the same to be surveyed and platted as HYLAND CREEK 3RD ADDITION and do hereby donate and dedicate to the public, for public use forever, the drainage and utility easements as shown on said plat.

In witness whereof said John A. Symington and Unni Symington, his wife have set their hands and seals this 20th day of APRIL, 1983.

And, in witness whereof said FIRST SOUTHDALE NATIONAL BANK OF EDINA, a United States of America Corporation, has caused these presents to be signed by its proper officers and its corporate seal to be hereunto affixed this _____ day of _____, 1983.

SIGNED: John A. Symington John A. Symington SIGNED: Unni Symington Unni Symington

SIGNED: Allen R. Walburn its Assistant Vice President John C. Landree its Commercial Banking Officer
FIRST SOUTHDALE NATIONAL BANK OF EDINA

STATE OF MINNESOTA
COUNTY OF HENNEPIN

The foregoing instrument was acknowledged before me this 20th day of APRIL, 1983 by John A. Symington and Unni Symington, his wife.

JOHN K. BARNES
NOTARY PUBLIC - MINNESOTA
HENNEPIN COUNTY
My Commission Expires Sept. 18, 1985

John K. Barnes
Notary Public, HENNEPIN County, Minnesota
My Commission Expires SEPTEMBER 18, 1985

STATE OF MINNESOTA
COUNTY OF HENNEPIN

The foregoing instrument was acknowledged before me this 20th day of April, 1983 by Allen R. Walburn its Assistant Vice President and John C. Landree its Commercial Banking Officer of said FIRST SOUTHDALE NATIONAL BANK OF EDINA, a United States of America Corporation, on behalf of said corporation.

DEBBIE J. RAMSEY
NOTARY PUBLIC - MINNESOTA
HENNEPIN COUNTY
My Commission Expires Mar. 29, 1988

Debbie J. Ramsey
Notary Public, Hennepin County, Minnesota
My Commission Expires _____

I hereby certify that I have surveyed and platted the HYLAND CREEK 3RD ADDITION plat as HYLAND CREEK 3RD ADDITION; that this plat is a correct representation of said survey; that all distances are correctly shown in feet and hundredths of a foot; that all monuments have been correctly placed in the ground as shown; that the outside boundary lines are correctly designated; and that there are no wetlands or public highways to be designated on said plat.

Edward H. Sunde
Edward H. Sunde, Land Surveyor
Minnesota License No. 8612

STATE OF MINNESOTA
COUNTY OF HENNEPIN

The foregoing surveyors certificate was acknowledged before me this 18th day of APRIL, 1983 by Edward H. Sunde, Land Surveyor.

JOHN K. BARNES
NOTARY PUBLIC - MINNESOTA
HENNEPIN COUNTY
My Commission Expires Sept. 18, 1985

John K. Barnes
Notary Public, HENNEPIN County, Minnesota
My Commission Expires SEPTEMBER 18, 1985

BLOOMINGTON, MINNESOTA

The plat of HYLAND CREEK 3RD ADDITION was approved and accepted by the City Council of the City of Bloomington, Minnesota at a regular meeting thereof, held this _____ day of _____, 1983. If applicable, the written comments and recommendations of the Commissioner of Transportation and the County Highway Engineer have been received by the City or the prescribed 30 day period has elapsed without receipt of such comments and recommendations, as provided by Minn. Statutes, Section 505.03, Subd. 2.

CITY COUNCIL OF BLOOMINGTON, MINNESOTA

BY: _____ its Mayor BY: _____ its Manager

PROPERTY TAXATION DEPARTMENT, Hennepin County, Minnesota

I hereby certify that there are no delinquent taxes for all years prior to 19____ for land described on this plat. Dated this _____ day of _____, 1983.

Vernon T. Hoppe, Director BY: _____ Tax Clerk

SURVEY DIVISION, Hennepin County, Minnesota

Pursuant to Chapter 810, Minnesota Laws of 1969, this plat has been approved this _____ day of _____, 1983.

Robert L. Bakka, Hennepin County, Surveyor BY: _____

REGISTRAR OF TITLES, Hennepin County, Minnesota

I hereby certify that the within plat of HYLAND CREEK 3RD ADDITION was filed for record in this office this _____ day of _____, 1983, at _____ o'clock _____ M.

R. Dan Carlson, Registrar of Titles BY: _____ Deputy