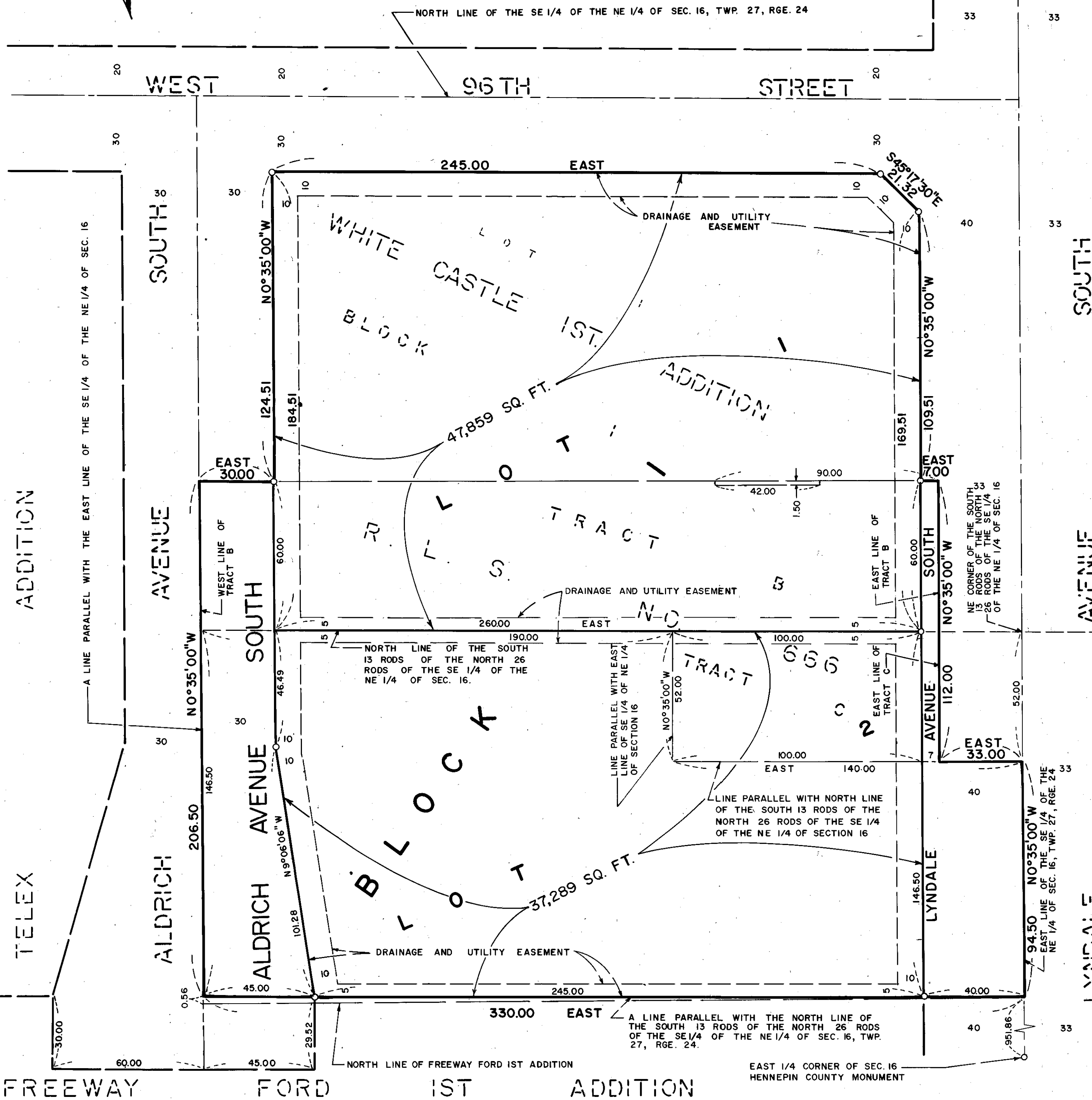


HOLLENBACK AND NELSON 1ST ADDITION

H-56

SCALE 0 30 60 90 IN FEET

O DENOTES IRON MONUMENT BEARINGS SHOWN ARE ASSUMED



KNOW ALL MEN BY THESE PRESENTS: That WHITE CASTLE SYSTEM, INC., a Delaware Corporation, owner and proprietor of the following described land, situate in the County of Hennepin, State of Minnesota, to wit:
Lot 1, Block 1, WHITE CASTLE 1ST ADDITION, according to the plat thereof on file and of record in the office of the Registrar of Titles, County of Hennepin, State of Minnesota;
and
North 1.5 feet of West 42 feet of East 90 feet of Tract B, Registered Land Survey No. 666, Files of Registrar of Titles, County of Hennepin;
and
Tract B, except the North 1.5 feet of the West 42 feet of the East 90 feet thereof, all in Registered Land Survey No. 666, Files of Registrar of Titles, County of Hennepin.
And that Hollenback & Nelson Inc., a Minnesota Corporation, owner and proprietor of the following described land, situate in the County of Hennepin, State of Minnesota, to wit:
Tract C, Registered Land Survey No. 666, Files of Registrar of Titles, County of Hennepin;
and

That part of South 13 rods of the north 26 rods of the East 70 rods of the Southeast 1/4 of the Northeast 1/4 Section 16, Township 27, Range 24, described as follows: Commencing at a point on the east line of said south 13 rods of the north 26 rods of the east 70 rods of the Southeast 1/4 of the Northeast 1/4 distant 52 feet south from the Northeast corner thereof; thence West parallel with the north line of said south 13 rods of the north 26 rods of the east 70 rods of the Southeast 1/4 of the Northeast 1/4 a distance of 140 feet; thence north parallel with the east line of said south 13 rods of the north 26 rods of the east 70 rods of the Southeast 1/4 of the Northeast 1/4 a distance of 52 feet; thence West along the north line of said south 13 rods of the north 26 rods of the east 70 rods of the Southeast 1/4 of the Northeast 1/4 a distance of 190 feet; thence South parallel with the East line of said South 13 rods of the north 26 rods of the east 70 rods of the Southeast 1/4 of the Northeast 1/4 a distance of 146.5 feet; thence East parallel with the north line of said South 13 rods of the north 26 rods of the East 70 rods of the Southeast 1/4 of the Northeast 1/4 a distance of 330 feet to the east line thereof; thence north along the east line of said south 13 rods of the north 26 rods of the east 70 rods of the Southeast 1/4 of the Northeast 1/4 a distance of 94.5 feet to the point of beginning.

Have caused the same to be surveyed and platted as HOLLENBACK AND NELSON 1ST ADDITION and do hereby donate and dedicate to the public, for public use forever the avenues and drainage and utility easements as shown on said plat.

In witness whereof said WHITE CASTLE SYSTEM, INC., a Delaware Corporation, has caused these presents to be signed by its proper officers and its corporate seal to be hereon affixed this 9th day of November A.D., 1976.

And in witness where of said Hollenback & Nelson, Inc., a Minnesota Corporation, has caused these presents to be signed by its proper officers and its corporate seal to be hereunto affixed this 22 day of October A.D., 1976.

SIGNED: WHITE CASTLE SYSTEM, INC. (Signatures: Vice President, Secretary, President, Vice President)
Hollenback & Nelson Inc. (Signatures: President, Vice President)

STATE OF Ohio
COUNTY OF Franklin
The foregoing instrument was acknowledged before me this 9th day of November A.D., 1976 by W.W. Wilson its Vice President and Robert D. Hays its Secretary of said WHITE CASTLE SYSTEM, INC., a Delaware Corporation, on behalf of said corporation.

WILLARD B. SCOTT, Notary Public
MY COMMISSION EXPIRES JAN. 22, 1978
Notary Public Franklin County, Ohio
My Commission Expires

STATE OF MINNESOTA
COUNTY OF Hennepin
The foregoing instrument was acknowledged before me this 22 day of October A.D., 1976 by Howard N. Nelson its President and Charles W. Hollenback its Vice President of said Hollenback & Nelson Inc., a Minnesota corporation, on behalf of said corporation.

EDWARD M. CHRISTIAN
Notary Public Hennepin County, Minn.
My Commission Expires Oct. 29, 1978
Notary Public Hennepin County, Minnesota
My Commission Expires

I hereby certify that I have surveyed and platted the property described on this plat as HOLLENBACK AND NELSON 1ST ADDITION; that this plat is a correct representation of said survey; that all distances are correctly shown on said plat in feet and hundredths of a foot; that all monuments have been correctly placed in the ground as shown on said plat; that the outside boundary lines are correctly designated; and that there are no wet lands to be designated on said plat.

Edward H. Sunde, Land Surveyor
Minnesota Registration No. 8612

STATE OF MINNESOTA
COUNTY OF Hennepin
The foregoing instrument was acknowledged before this 22 day of October A.D., 1976 by Edward H. Sunde, Land Surveyor.

LOREN GROSS
Notary Public Hennepin County, Minn.
My Commission Expires July 13, 1978
Notary Public Hennepin County, Minnesota
My Commission Expires

BLOOMINGTON, MINNESOTA
The plat of HOLLENBACK AND NELSON 1ST ADDITION was approved and accepted by the City of Bloomington, Minnesota at a regular meeting thereof, held this day of A.D., 1976.

CITY COUNCIL OF BLOOMINGTON, MINNESOTA
BY: its Mayor BY: its Manager

FINANCE DIVISION, Hennepin County, Minnesota
I hereby certify that there are no delinquent taxes for all years prior to 197 for land described on this plat. Dated this day of 197.

Vernon T. Hoppe, Director BY: Tax Clerk

COUNTY SURVEYOR, Hennepin County, Minnesota
Pursuant to Chapter 810, Minnesota Laws of 1969, this plat has been approved this day of A.D., 1976.

By: Alver R. Freeman, Hennepin County Surveyor
REGISTRAR OF TITLES, Hennepin County, Minnesota

I hereby certify that the within plat of HOLLENBACK AND NELSON 1ST ADDITION was filed for record in this office this day of 197, at o'clock M. and that the two copies were compared with the official plat and were found to be true and correct copies thereof.
Wayne A. Johnson, Registrar of Titles BY: Deputy

BINDING FOR RESERVED SPACE THIS