

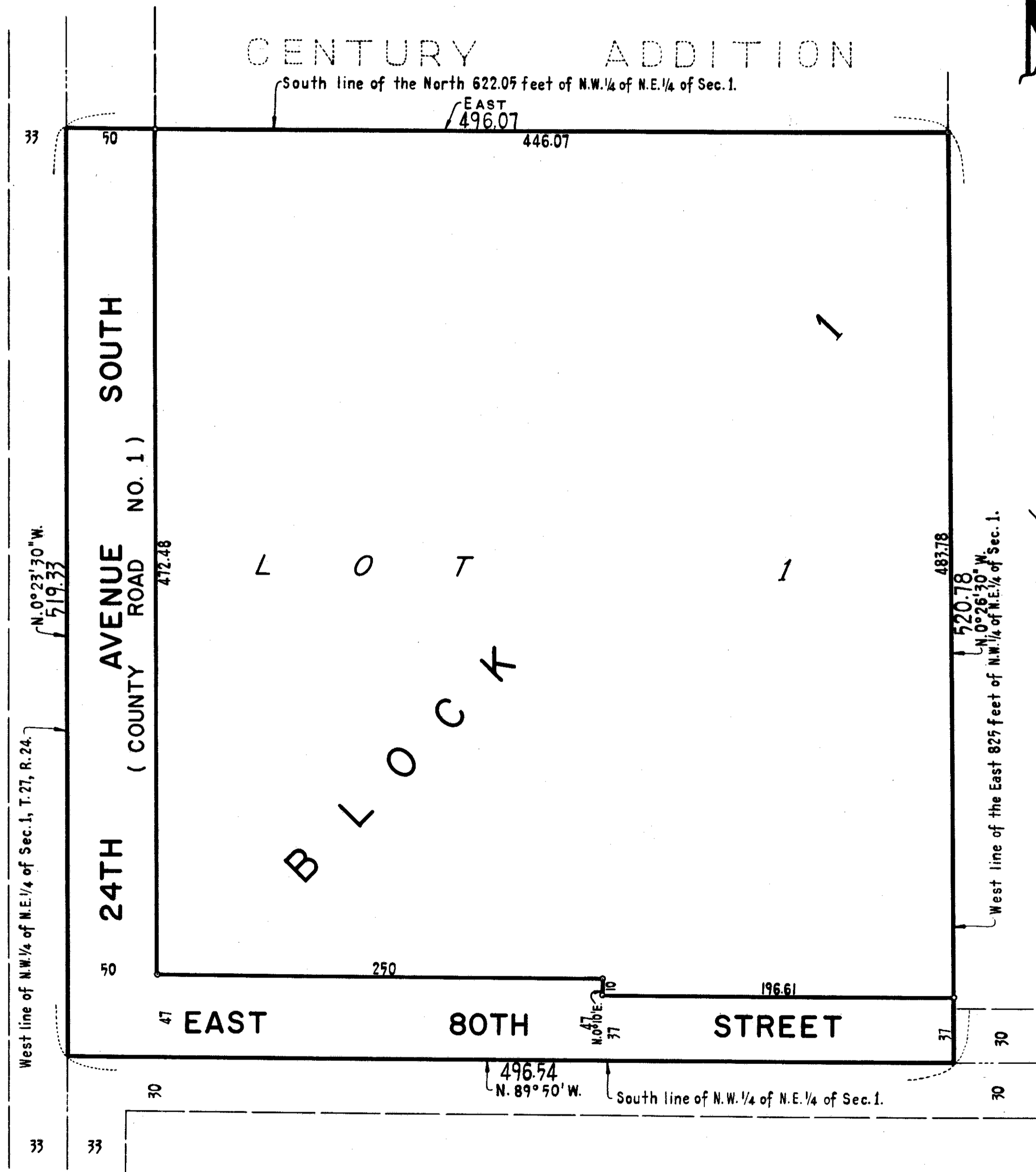
HOBEN'S ADDITION

SEPTEMBER, 1968

EGAN, FIELD & NOWAK
SURVEYORS

BEARINGS SHOWN ARE ASSUMED.
O DENOTES IRON MONUMENT.

SCALE: 1 inch equals 50 feet.



Know all men by these presents that Parkway Development Corporation, a Minnesota corporation, owner and proprietor of the following described property situate in the State of Minnesota and County of Hennepin, to wit: All that part of the Northwest 1/4 of the Northeast 1/4 of Section 1, Township 27, Range 24, lying South of the North 622.05 feet thereof and West of the East 825 feet thereof, has caused the same to be surveyed and platted as HOBEN'S ADDITION, and do hereby donate and dedicate to the public for public use forever the avenue and street as shown on the plat. In witness whereof said Parkway Development Corporation has caused these presents to be signed by its proper officers and its corporate seal to be hereunto affixed this 17th day of June A.D. 1969.

In presence of:-
 As to James P. Hoben
 and Ray J. Merz
 PARKWAY DEVELOPMENT CORPORATION
 by James P. Hoben president
 by Ray J. Merz secretary

STATE OF MINNESOTA) S.S.
 COUNTY OF HENNEPIN) On this 17th day of June A.D. 1969, before me, a Notary Public, personally appeared James P. Hoben and Ray J. Merz to me personally known who by me each duly sworn did say that they are respectively president and secretary of Parkway Development Corporation, the corporation named in the foregoing instrument, that the corporate seal affixed to said instrument is the corporate seal of said corporation, and that said instrument was signed and sealed in behalf of said corporation by authority of its Board of Directors and said James P. Hoben and Ray J. Merz acknowledged said instrument to be the free act and deed of said corporation.

Laura Harten
 Notary Public, Hennepin County, Minnesota
 My commission expires Aug 2, 1970

I hereby certify that I have surveyed and platted the property described on this plat as HOBEN'S ADDITION; that this plat is a correct representation of said survey; that all distances are correctly shown on the plat in feet and decimals of a foot; that all monuments have been correctly placed in the ground as shown; that the outside boundary lines are correctly designated on the plat and that there are no wet lands or public highways to be designated on said plat other than as shown thereon.

Arthur E. Ostlund
 Surveyor - Minnesota Registration No. 6122

STATE OF MINNESOTA) S.S.
 COUNTY OF HENNEPIN) Above certificate subscribed and sworn to before me, a Notary Public, this 21st day of FEBRUARY A.D. 1969.

Chris Kuntz
 CHRIS KUNTZ
 Notary Public, Hennepin County, Minnesota
 My commission expires March 4, 1975.

The plat of HOBEN'S ADDITION was approved and accepted by the City Council of Bloomington, Minnesota at a regular meeting thereof held this _____ day of _____ A.D. 1969.

CITY COUNCIL OF BLOOMINGTON, MINNESOTA
 by John P. Thomasley mayor
 by John J. Redger manager

The boundaries of this plat and the boundaries of the block therein have been mathematically checked and approved. No determination has been made to ascertain that the legal description agrees with said plat. Dated this _____ day of _____ A.D. 1969.

by _____
 Elmer J. Peterson - Hennepin County Surveyor