

HERITAGE HILLS 4TH ADDITION

CLYDE H. PARKER—SURVEYOR

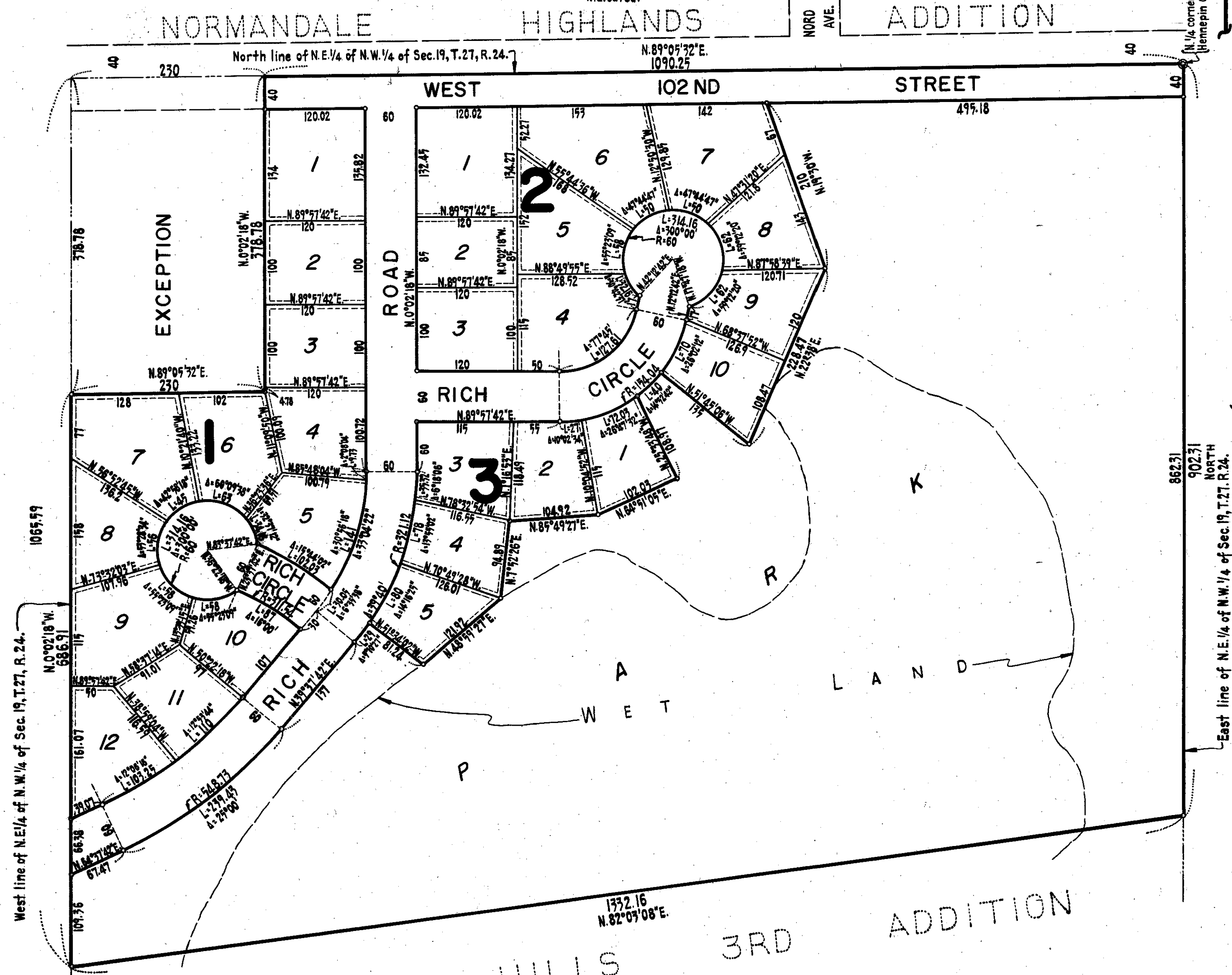
BEARINGS SHOWN ARE ASSUMED.

SCALE: 1 INCH EQUALS 100 FEET

JUNE, 1966

○ DENOTES IRON MONUMENT.

Drainage and Utility Easements shown thus. Being 7 feet on each side of every rear and side lot line. Unless otherwise indicated.



Know all men by these presents that George W. Matthews, single, and Max Winter and Helen Winter, his wife, owners and proprietors, and Eliason Land Investment Co., Inc., a Minnesota Corporation, and Normandale Development Corporation, a Minnesota Corporation, purchasers under contract for deed, of the following described property situate in the County of Hennepin and State of Minnesota, to-wit: That part of the Northeast 1/4 of the Northwest 1/4 of Section 19, Township 27, Range 24, lying Northerly of a line running from a point in the East line of said Northeast 1/4 of the Northwest 1/4, distant 902.31 feet South of the Northeast corner of said Northeast 1/4 of the Northwest 1/4 to a point in the West line of said Northeast 1/4 of the Northwest 1/4 distant 1065.59 feet South of the Northwest corner of said Northeast 1/4 of the Northwest 1/4, except the West 230 feet of the North 378.78 feet of said Northeast 1/4 of the Northwest 1/4, have caused the same to be surveyed and platted as HERITAGE HILLS 4TH ADDITION and do hereby donate and dedicate to the public for public use forever the Street Road, Circles, Park and easements for utility and drainage purposes as shown on the annexed plat. In witness whereof George W. Matthews, single, and Max Winter and Helen Winter, his wife, have hereunto set their hands and seals this 3RD day of AUGUST A.D. 1966. In witness whereof said Eliason Land Investment Co., Inc. has caused these presents to be signed by its proper officers and its corporate seal to be hereunto affixed this 3RD day of AUGUST A.D. 1966. In witness whereof said Normandale Development Corporation has caused these presents to be signed by its proper officers and its corporate seal to be hereunto affixed this 3RD day of AUGUST A.D. 1966.

In presence of:

James H. Parker As to George W. Matthews, Max Winter and Helen Winter

Kenneth L. Weestrand As to E. J. Eliason and Alma Eliason

Diana August As to Kenneth L. Weestrand and Richard Hirsch

George W. Matthews (Seal) George W. Matthews

Max Winter (Seal) Max Winter

Helen Winter (Seal) Helen Winter

ELIASON LAND INVESTMENT CO., INC.
by E. J. Eliason Its president
by Alma Eliason Its Secretary
Alma Eliason

NORMANDALE DEVELOPMENT CORPORATION
by Kenneth L. Weestrand Its president
Kenneth L. Weestrand
by Richard Hirsch Its secretary
Richard Hirsch

STATE OF MINNESOTA) S.S. On this 3rd day of AUGUST A.D. 1966, before me, a Notary Public personally appeared George W. Matthews, single, and Max Winter and Helen Winter, his wife, to me known to be the persons described in and who executed the foregoing instrument and they acknowledged that they executed the same as their own free act and deed.

Richard E. Weestrand
Notary Public, Hennepin County, Minnesota
My commission expires May 18, 1967

STATE OF MINNESOTA) S.S. On this 3rd day of AUGUST A.D. 1966, before me, a Notary Public personally appeared E. J. Eliason and Alma Eliason, to me personally known who by me each duly sworn did say that they are respectively president and secretary of Eliason Land Investment Co., Inc., the corporation named in the foregoing instrument, that the corporate seal affixed to said instrument is the corporate seal of said corporation and that said instrument was signed and sealed in behalf of said corporation by authority of its Board of Directors and said E. J. Eliason and Alma Eliason acknowledged said instrument to be the free act and deed of said corporation.

Richard E. Weestrand
Notary Public, Hennepin County, Minnesota
My commission expires May 18, 1967

STATE OF MINNESOTA) S.S. On this 3rd day of AUGUST A.D. 1966, before me, a Notary Public personally appeared Kenneth L. Weestrand and Richard Hirsch, to me personally known who by me each duly sworn did say that they are respectively president and secretary of Normandale Development Corporation, the corporation named in the foregoing instrument, that the corporate seal affixed to said instrument is the corporate seal of said corporation and that said instrument was signed and sealed in behalf of said corporation by authority of its Board of Directors and said Kenneth L. Weestrand and Richard Hirsch acknowledged said instrument to be the free act and deed of said corporation.

Richard E. Weestrand
Notary Public, Hennepin County, Minnesota
My commission expires May 18, 1967

I hereby certify that I have surveyed and platted the property described on this plat as HERITAGE HILLS 4TH ADDITION; that this plat is a correct representation of said survey; that all distances are correctly shown on the plat in feet and decimals of a foot; that the monuments for guidance of future surveys are correctly placed in the ground as shown on the plat; that the outside boundary lines are correctly designated on the plat and that there are no wet lands or public highways to be designated on said plat other than as shown thereon.

Clyde H. Parker
Clyde H. Parker, Land Surveyor—Minnesota Registration No. 2055

STATE OF MINNESOTA) S.S. The above certificate was subscribed and sworn to before me, a Notary Public, in and for said County and State on this 3rd day of AUGUST A.D. 1966.

Richard E. Weestrand
Notary Public, Hennepin County, Minnesota
My commission expires May 18, 1967

The foregoing plat of HERITAGE HILLS 4TH ADDITION was approved and accepted by the City Council of Bloomington, Minnesota, at a regular meeting thereof held this _____ day of _____ A.D. 1966.

CITY COUNCIL OF BLOOMINGTON, MINNESOTA
by _____ Its Mayor
by _____ Its Manager

The boundaries of this plat and the boundaries of the blocks therein have been mathematically checked and approved. No determination has been made to ascertain that the legal description agrees with said plat. Dated this _____ day of _____ A.D. 1966.

by Elmer J. Peterson
Hennepin County Surveyor