

# HENNEPIN COUNTY STATE AID HIGHWAY NO. 32, PLAT 69

H-130

R.T. DOC. NO. 170011  
C.R. DOC. NO. 502006

REGISTERED NO. 1173, 354794 ETC, SEE COMPLETE LIST IN DOCUMENT ROOM

KNOW ALL PERSONS BY THESE PRESENTS: That the County of Hennepin, a body politic and corporate under the laws of the State of Minnesota, pursuant to Minnesota Statutes 160.14 and 505.1792 as amended, has caused the right-of-way of part of Hennepin County State Aid Highway No. 32 to be surveyed and monumented. Said right-of-way is comprised of the following described lands situate in the County of Hennepin, State of Minnesota, to wit:

Those parts embraced within Section 4, Township 27, Range 24 described as follows:

- Part of Lot 7, Block 2, DIXON'S SUNNY VIEW ADDITION,
- Part of Lot 1, Block 1, SOUTHTOWN SHOPPING CENTER,
- Part of the Southwest Quarter of the Northwest Quarter,
- Part of the Northwest Quarter of the Southwest Quarter,
- Part of the Southwest Quarter of the Southwest Quarter.

Those parts embraced within Section 5, Township 27, Range 24 described as follows:

- Part of Lots 1, 12, 13 and 14, Block 1, LAKEVIEW HIGHLANDS 1ST ADDITION,
- Part of the Northeast Quarter of the Northeast Quarter,
- Part of the Southeast Quarter of the Northeast Quarter.

Those parts embraced within Section 8, Township 27, Range 24 described as follows:

- Part of Lot 1, Block 1, L.R.L. 1ST ADDITION,
- Part of Lot 2, Block 1, WINCHELL'S ADDITION,
- Part of the Northeast Quarter of the Northeast Quarter,
- Part of the Southeast Quarter of the Northeast Quarter,
- Part of the Northeast Quarter of the Southeast Quarter,
- Part of the Southeast Quarter of the Southeast Quarter.

Those parts embraced within Section 9, Township 27, Range 24 described as follows:

- Part of Registered Land Survey No. 199,
- Part of Lot 1, Block 1, LUNDSTROMS PENN LAKE TERRACE,
- Part of the Northwest Quarter of the Northwest Quarter,
- Part of the Northwest Quarter of the Southwest Quarter,
- Part of the Southwest Quarter of the Southwest Quarter.

Those parts embraced within Section 16, Township 27, Range 24 described as follows:

- Part of Lot 2, Block 1, BURTIS ADDITION NO. 2,
- Part of the Southwest Quarter of the Southwest Quarter.

Those parts embraced within Section 17, Township 27, Range 24 described as follows:

- Part of Lot 6, Block 4, SOUTHBROOK,
- Part of Lot 3, "BLOOMINGTON GARDENS, HENNEPIN COUNTY, MINN.",
- Part of the Northeast Quarter of the Northeast Quarter,
- Part of the Northeast Quarter of the Southeast Quarter,
- Part of the Southeast Quarter of the Southeast Quarter.

This plat, compiled and prepared jointly by the Right-of-Way Division and the Survey Division, Hennepin County Bureau of Public Service, is hereby certified as the official plat of HENNEPIN COUNTY STATE AID HIGHWAY NO. 32, PLAT 69 as shown, pursuant to Minnesota Statutes 160.14 and 505.1792 as amended, and filed pursuant to Board Resolution dated October 28, 1969.

DATE January 6, 1986 COUNTY OF HENNEPIN BOARD OF COUNTY COMMISSIONERS

*Jeff Spartz*  
Jeff Spartz  
Chairman

DATE December 17, 1985 COUNTY OF HENNEPIN BUREAU OF PUBLIC SERVICE

*David D. Swenson*  
David D. Swenson  
Principal Right-of-Way Agent

I hereby certify that this plat was prepared by me or under my direct supervision this 9th day of January, 1986, and, that I am a duly Registered Land Surveyor under the laws of the State of Minnesota.

*Robert L. Bakka*  
Robert L. Bakka, Hennepin County Surveyor, MN License No. 7093

REGISTRAR OF TITLES, Hennepin County, Minnesota

I hereby certify that the within plat of HENNEPIN COUNTY STATE AID HIGHWAY NO. 32, PLAT 69 was filed in this office this 27th day of JANUARY, 1986 at 11:00 o'clock A. M.

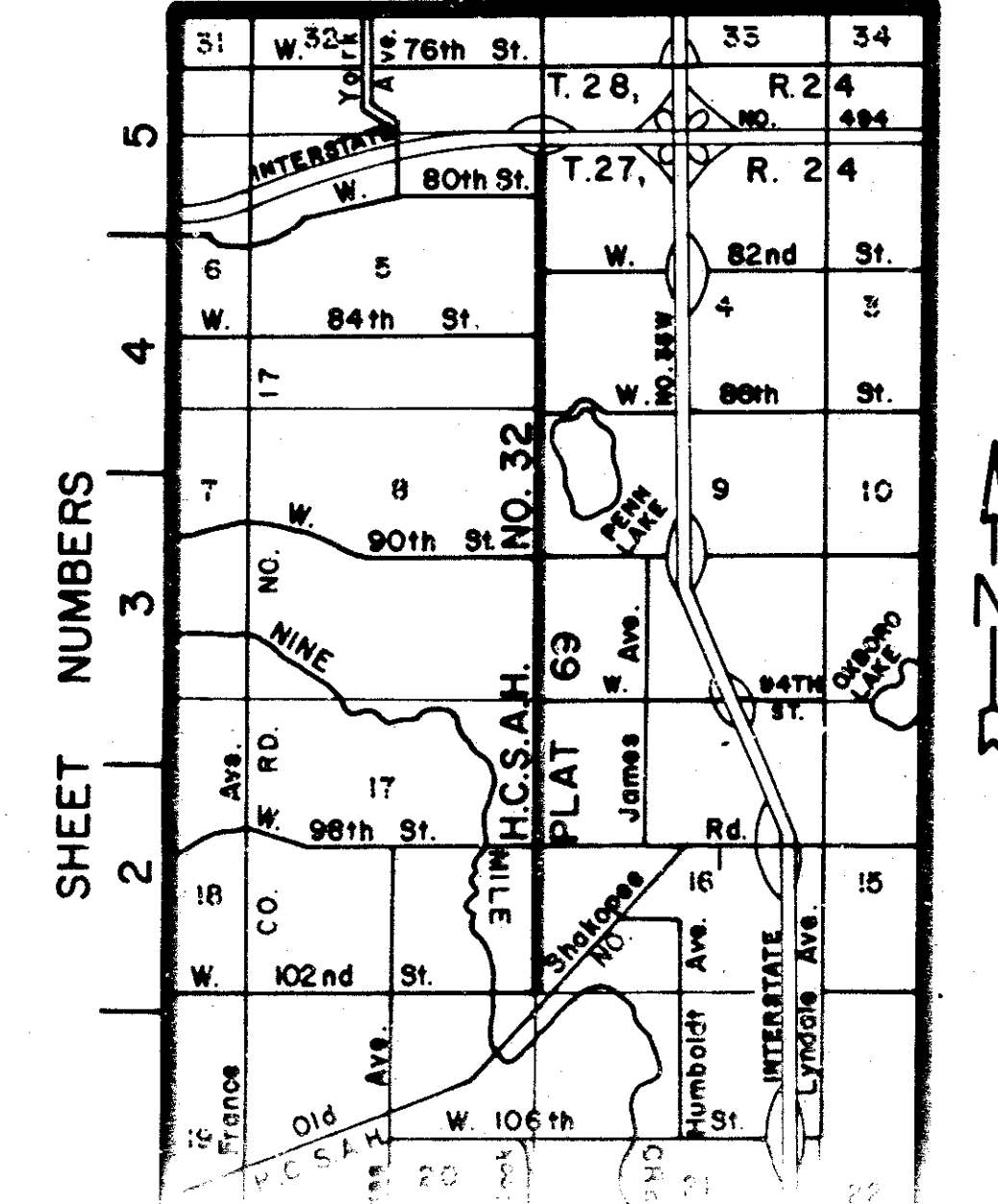
R. Dan Carlson, Registrar of Titles, by *R. O. Osgood* Deputy

COUNTY RECORDER, Hennepin County, Minnesota

I hereby certify that the within plat of HENNEPIN COUNTY STATE AID HIGHWAY NO. 32, PLAT 69 was filed in this office this 30th day of January, 1986 at 11:55 o'clock A. M.

R. Dan Carlson, County Recorder, by *R. O. Osgood* Deputy

LOCATION DETAIL  
(NOT TO SCALE)



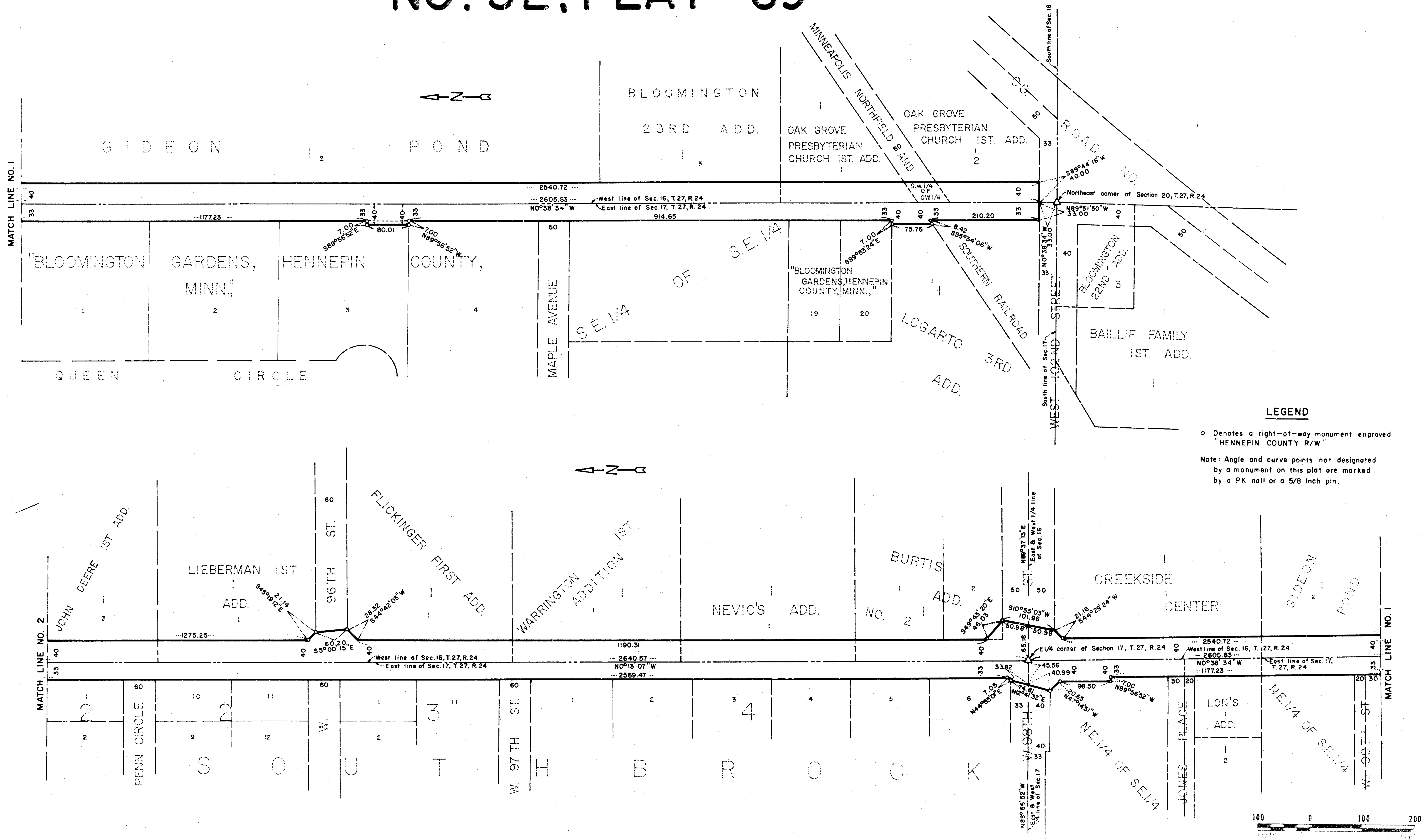
NOTE: A NORTH bearing on this plat is grid North as based upon the Minnesota Coordinate System, Southern Zone.

PLAT OF	
HENNEPIN COUNTY STATE AID HIGHWAY NO. 32, PLAT 69	
COUNTY SURVEYORS PROJECT NO. 305	SURVEY AUTHORIZED BY: BOARD OF HENNEPIN COUNTY COMMISSIONERS
LOCATION SECTIONS 4,5,8,9,16,17 T.27,R.24	

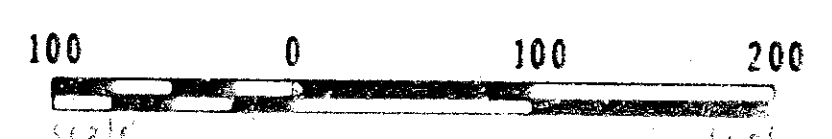
# HENNEPIN COUNTY STATE AID HIGHWAY NO. 32, PLAT 69

H-130

R.T.DOC.NO. \_\_\_\_\_  
C.R.DOC.NO. 307



**LEGEND**  
 ○ Denotes a right-of-way monument engraved "HENNEPIN COUNTY R/W"  
 Note: Angle and curve points not designated by a monument on this plat are marked by a PK nail or a 5/8 inch pin.

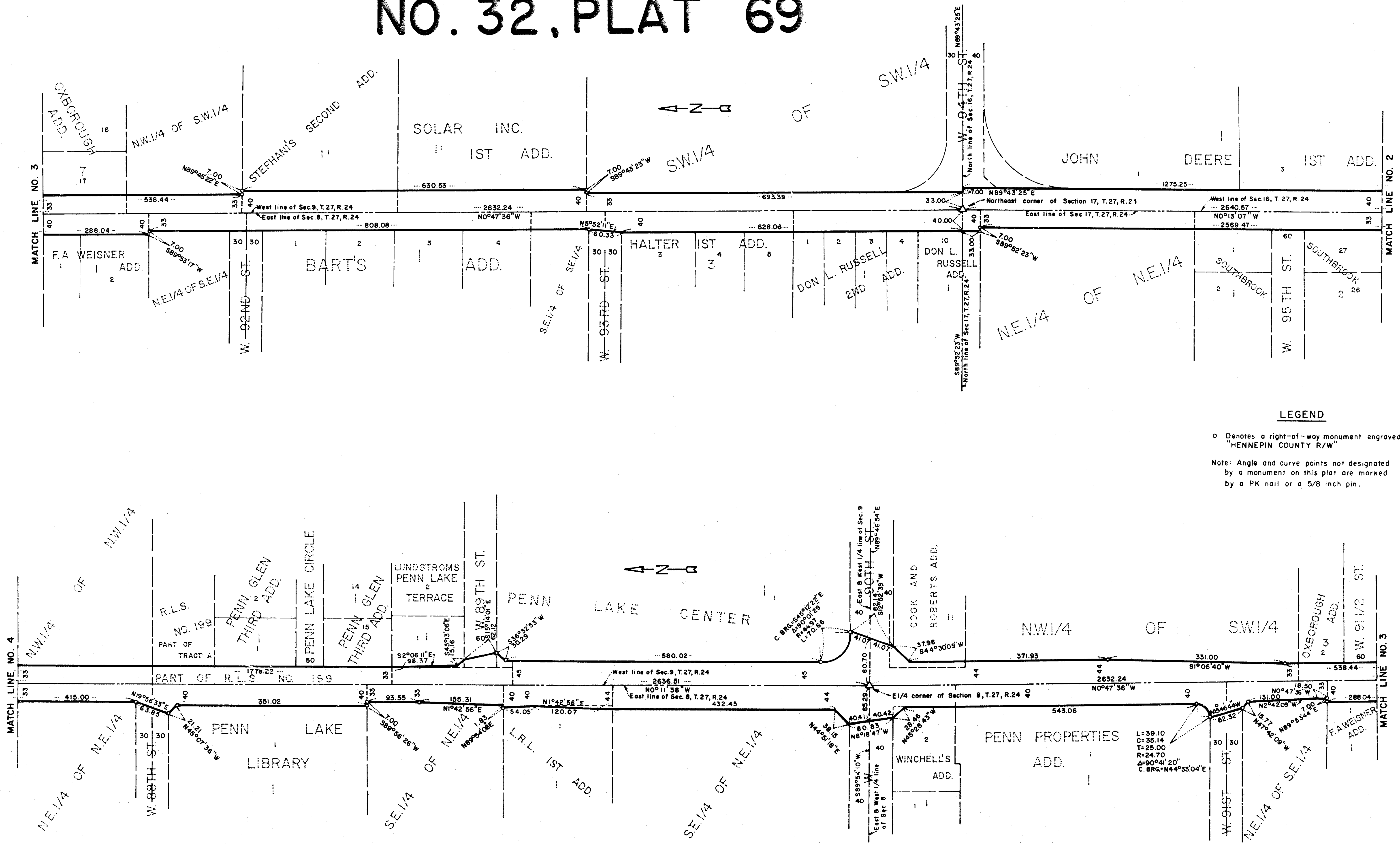


# HENNEPIN COUNTY STATE AID HIGHWAY

H-130

R.T.DOC.NO. \_\_\_\_\_  
C.R.DOC.NO. 5070177

## NO. 32, PLAT 69



**LEGEND**

o Denotes a right-of-way monument engraved "HENNEPIN COUNTY R/W"

Note: Angle and curve points not designated by a monument on this plat are marked by a PK nail or a 5/8 inch pin.

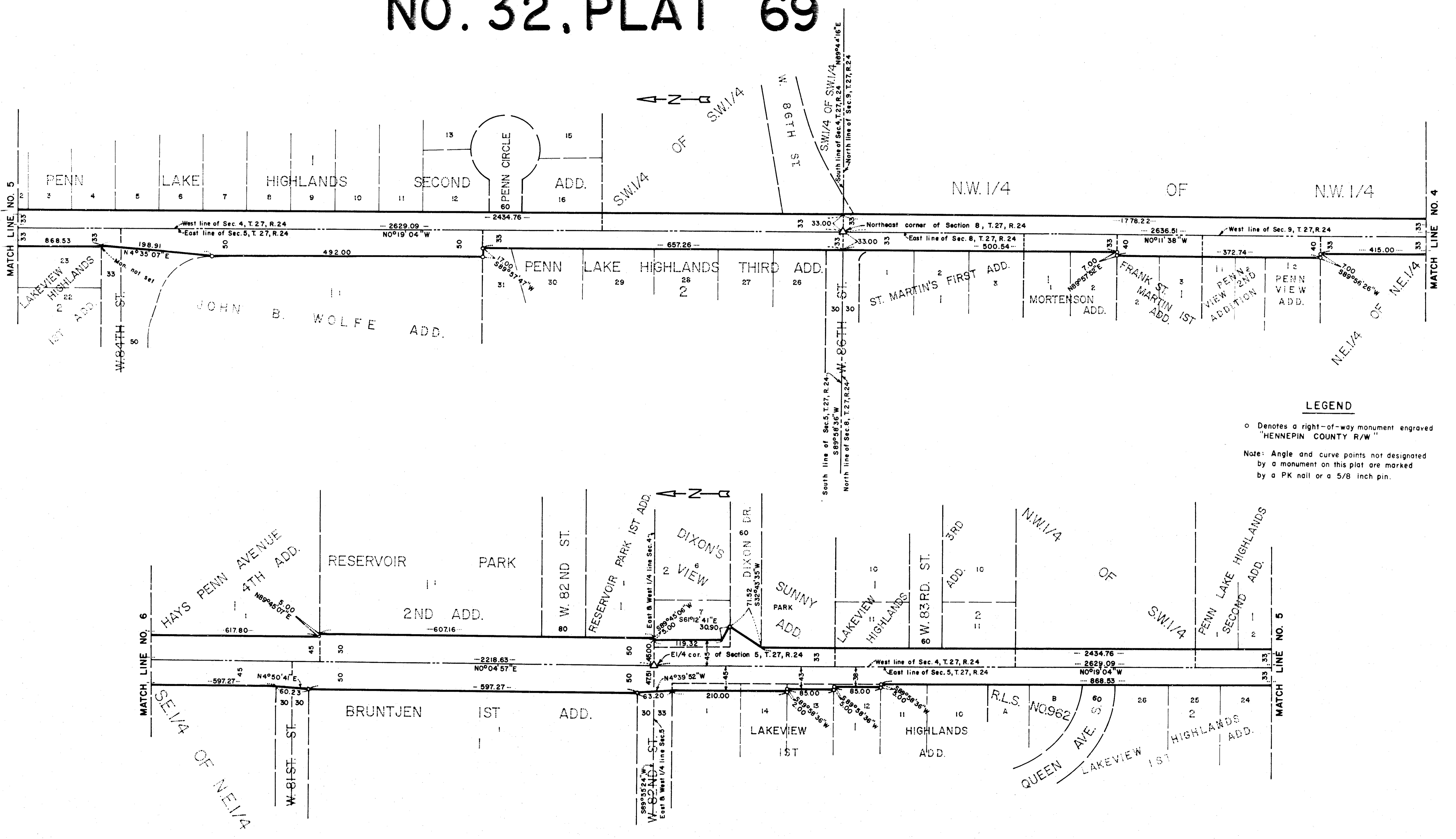
L=39.10  
C=35.14  
T=25.00  
R=24.70  
Δ=90°41'20"  
C.BRG.=N44°33'04"E



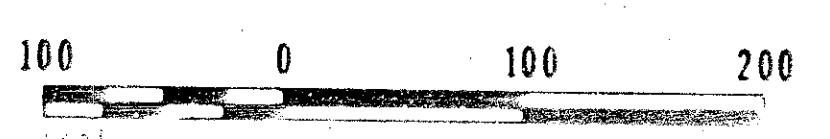
# HENNEPIN COUNTY STATE AID HIGHWAY NO. 32, PLAT 69

H-130

R.T.DOC.NO. 1700341  
C.R.DOC.NO. 5071



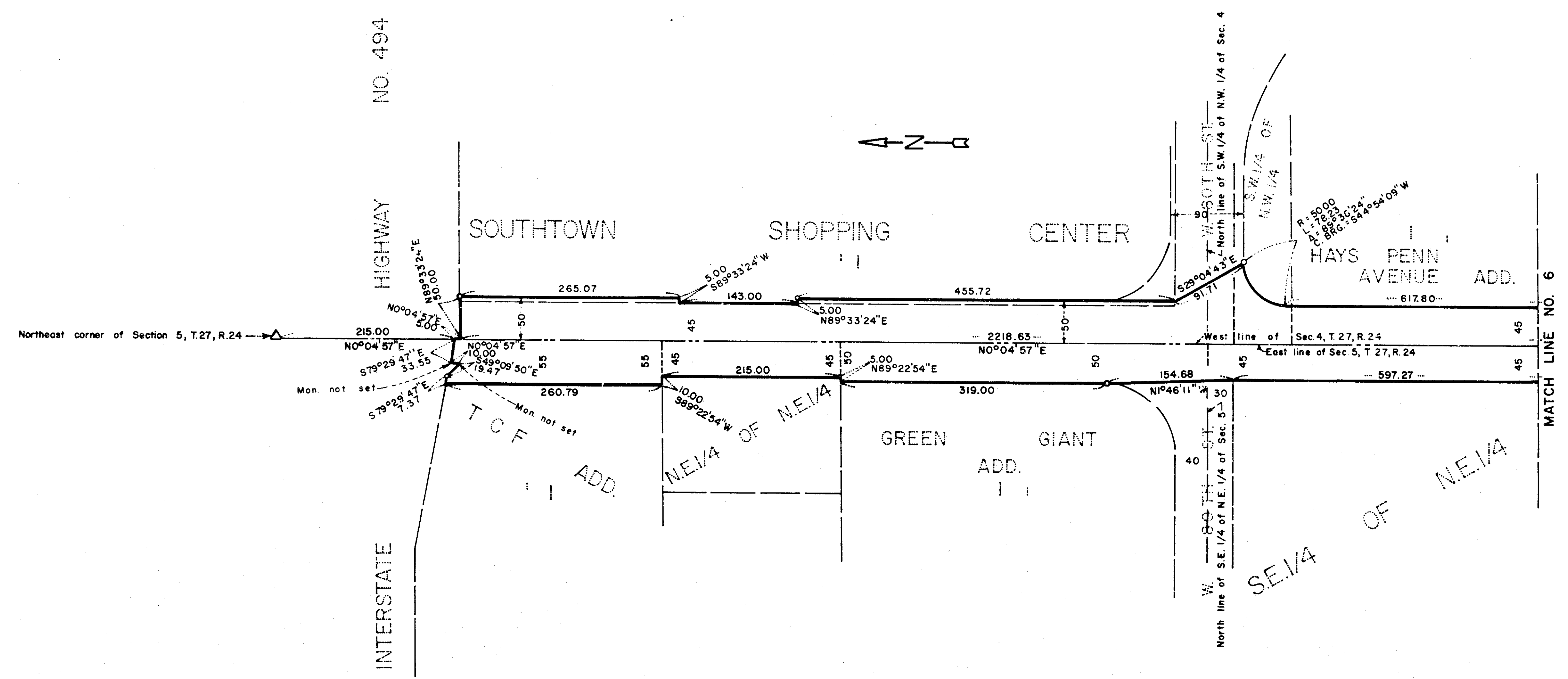
**LEGEND**  
 ○ Denotes a right-of-way monument engraved "HENNEPIN COUNTY R/W"  
 Note: Angle and curve points not designated by a monument on this plat are marked by a PK nail or a 5/8 inch pin.



H-130

# HENNEPIN COUNTY STATE AID HIGHWAY NO. 32, PLAT 69

R.T.DOC.NO. 170000  
C.R.DOC.NO. 507075



### LEGEND

o Denotes a right-of-way monument engraved "HENNEPIN COUNTY R/W"

Note: Angle and curve points not designated by a monument on this plat are marked by a PK nail or a 5/8 inch pin.