

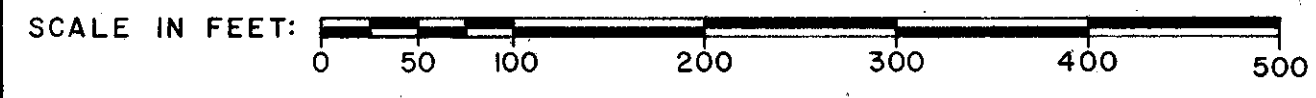
# HAYS PENN AVENUE 2ND ADDITION

BOOK \_\_\_\_\_ PAGE \_\_\_\_\_  
R. D. DOC. NO. \_\_\_\_\_

BEARINGS SHOWN ARE ASSUMED  
◦ DENOTES IRON MONUMENT

AUGUST, 1974

EGAN, FIELD & NOWAK, INC.  
SURVEYORS



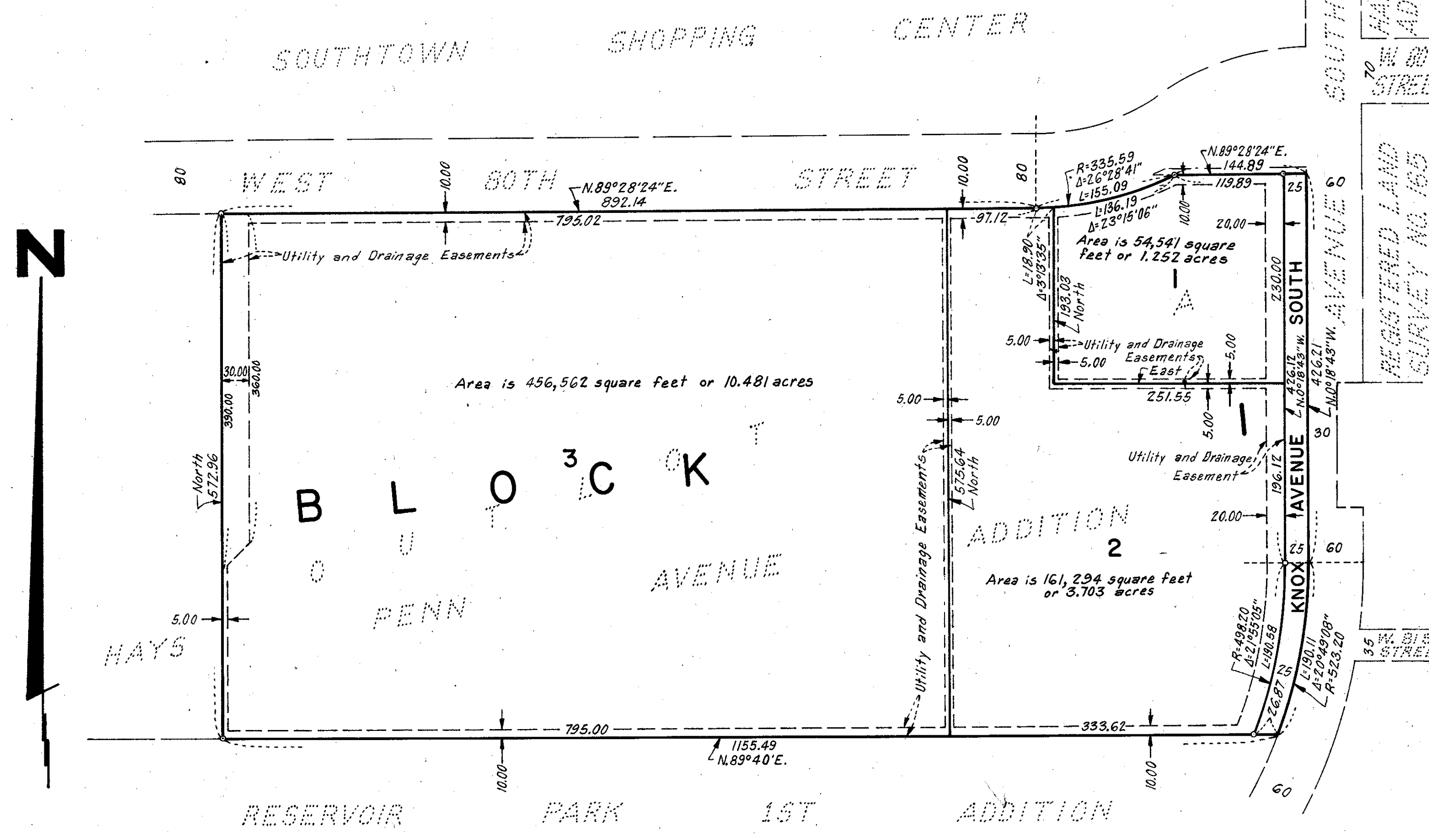
BINDING

FOR

RESERVED

SPACE

THIS



Know all men by these presents that A. D. Hays Parking, Inc., a Minnesota corporation, owner and proprietor of the following described property situated in the State of Minnesota and County of Hennepin to wit: Outlot A, Hays Penn Avenue Addition, has caused the same to be surveyed and platted as HAYS PENN AVENUE 2ND ADDITION and do hereby donate and dedicate to the public for public use forever the avenue and easements for drainage and utility purposes, as shown on this plat. In witness whereof said A. D. Hays Parking, Inc., has caused these presents to be signed by its proper officers and its corporate seal to be hereunto affixed this 22 day of AUGUST A. D. 1974.

A. D. HAYS PARKING, INC.  
by Betty H. Knoblauch president by Charles A. Hays vice president  
Betty H. Knoblauch  
Charles A. Hays

STATE OF MINNESOTA)  
COUNTY OF HENNEPIN) The foregoing instrument was acknowledged before me this 22nd day of August, 1974  
by Betty H. Knoblauch, president, and Charles A. Hays, vice president of A. D. Hays Parking, Inc., a Minnesota corporation,  
on behalf of the corporation.

Lawrence C. Arany, Jr.  
Notary Public, Hennepin County, Minnesota. My commission expires November 23, 1979  
LAWRENCE C. ARANY, JR.

I hereby certify that I have surveyed and platted the property described on this plat as HAYS PENN AVENUE 2ND ADDITION; that this plat is a correct representation of said survey; that all distances are correctly shown on the plat in feet and hundredths of a foot; that all monuments have been correctly placed in the ground as shown; that the outside boundary lines are correctly designated on the plat, and that there are no wet lands to be designated on the plat.

Larry R. Couture  
Larry R. Couture, Land Surveyor Minnesota Registration No. 9018

STATE OF MINNESOTA)  
COUNTY OF HENNEPIN) The foregoing instrument was acknowledged before me this 19<sup>th</sup> day of August, 1974  
by Larry R. Couture, Land Surveyor.

Chris Kuntz  
CHRIS KUNTZ, Notary Public, Hennepin County, Minnesota. My commission expires March 4, 1975.

This plat of HAYS PENN AVENUE 2ND ADDITION was approved and accepted by the City Council of Bloomington, Minnesota, at a regular meeting thereof held this \_\_\_\_\_ day of \_\_\_\_\_ A. D. 1974.

CITY COUNCIL OF BLOOMINGTON, MINNESOTA

by \_\_\_\_\_ mayor by \_\_\_\_\_ manager

FINANCE DIVISION, Hennepin County, Minnesota.  
I hereby certify that there are no delinquent taxes for all years prior to \_\_\_\_\_ for land described on this plat.  
Dated this \_\_\_\_\_ day of \_\_\_\_\_ A. D. 1974.

Vernon T. Hoppe, Director \_\_\_\_\_ tax clerk

Pursuant to Chapter 810, Minnesota Laws of 1969, this plat has been approved this \_\_\_\_\_ day of \_\_\_\_\_, 1974.

by \_\_\_\_\_  
Alver R. Freeman, Hennepin County Surveyor

REGISTER OF DEEDS, Hennepin County, Minnesota  
I hereby certify that the within plat of HAYS PENN AVENUE 2ND ADDITION was filed for record in this office this \_\_\_\_\_ day of \_\_\_\_\_, 1974, at \_\_\_\_\_ o'clock \_\_\_\_\_ M. and was recorded in Book \_\_\_\_\_ of Plats, Page \_\_\_\_\_ and that the two copies were compared with the official plat and were found to be true and correct copies thereof.

Wayne A. Johnson, Register of Deeds \_\_\_\_\_ deputy.