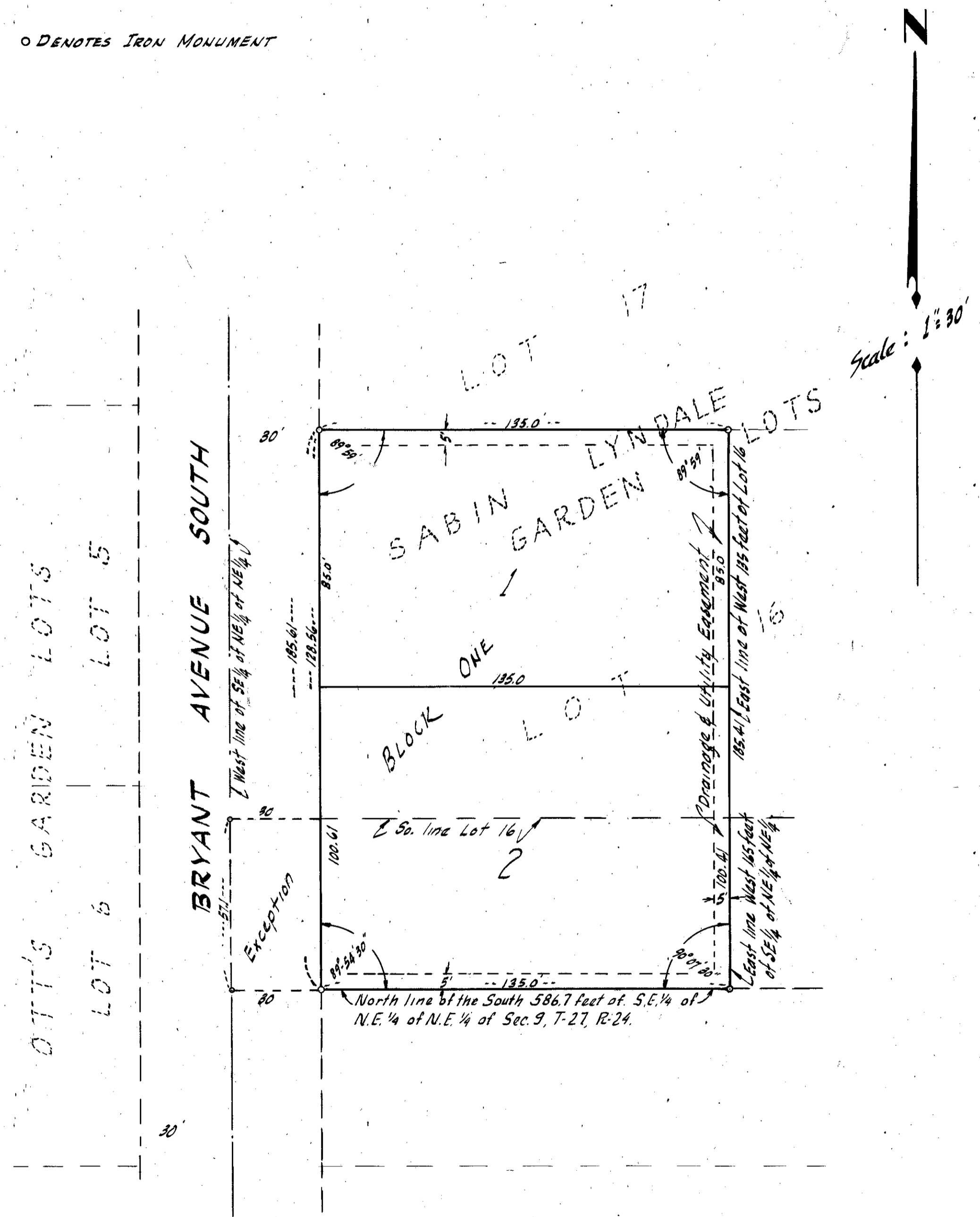


George Butler Second Addition

VILLAGE OF BLOOMINGTON HENNEPIN COUNTY, MINNESOTA

o DENOTES IRON MONUMENT

HARRY S. JOHNSON - SURVEYOR



Know All Men By These Presents: that Anderson-Butler Construction Co., a Minnesota corporation, owners and proprietors of the following described property situated in the State of Minnesota and County of Hennepin to wit: The West 135 feet of Lot 16, SABIN LYNDALE GARDEN LOTS and the West 165 feet of that part of the Southeast Quarter (SE 1/4) of Northeast Quarter (NE 1/4) of Northeast Quarter (NE 1/4) of Section Nine (9), Township Twenty-seven (27), Range Twenty-four (24), lying North of the South 586.7 feet thereof and South of the South line of Lots Five (5) and Sixteen (16), SABIN LYNDALE GARDEN LOTS, except the West 30 feet thereof. Have caused the same to be surveyed and platted as George Butler Second Addition subject to the drainage and utility easements as shown on the annexed plat. In witness whereof, the Anderson-Butler Construction Co. has caused these presents to be signed by its proper officers and its corporate seal to be hereunto affixed on this _____ day of _____ A.D. 1957.

In Presence of _____
 _____ as to Marvin H. Anderson and George R. Butler
 _____ Anderson-Butler Construction Co.
 _____ President
 _____ Secretary

State of Minnesota } ss. On this _____ day of _____ A.D. 1957, before me, a Notary Public, within and for said County and State County of Hennepin } personally appeared Marvin H. Anderson and George R. Butler to me personally known, who being by me each duly sworn, did say that they are respectively President and Secretary of Anderson-Butler Construction Co., the corporation named in the foregoing instrument, that the Seal affixed to said instrument is the corporate seal of said corporation, that said instrument was signed and sealed in behalf of said corporation by authority of its Board of Directors; and said Marvin H. Anderson and George R. Butler acknowledged said instrument to be the free act and deed of said corporation.

Notary Public, Hennepin County, Minnesota
 My Commission Expires _____

I hereby certify that I have surveyed and platted the property described on this plat as George Butler Second Addition, that this plat is a correct representation of said survey; that all distances are correctly shown on this plat in feet and decimals of a foot; that the monuments for guidance of future surveys have been correctly placed in the ground as shown on this plat; that the outside boundary lines are correctly designated on this plat and that there are no wet lands or public highways other than shown hereon.

Land Surveyor - Minnesota Reg. No 5065

State of Minnesota } ss. The above certificate subscribed and sworn to before me on this _____ day of _____ A.D. 1957 County of Hennepin }

Notary Public, Hennepin County, Minnesota
 My Commission Expires _____

Checked and approved on this _____ day of _____ A.D. 1957

Hennepin County Surveyor

The annexed plat was approved and accepted by the Village Council of Bloomington, Minnesota at a regular meeting thereof held on this _____ day of _____ A.D. 1957

VILLAGE COUNCIL OF BLOOMINGTON, MINNESOTA
 By _____ Mayor
 By _____ Manager