

# GEORGE ANDERSON ADDITION

C.R. DOC. NO. \_\_\_\_\_

KNOW ALL MEN BY THESE PRESENTS: That GLADYS V. ANDERSON, a single person, owner and proprietor of the following described property situated in the County of Hennepin, State of Minnesota, to wit:

The North 90 feet of Lot 17, Block I, Essex Green, according to the recorded plat thereof, and situate in Hennepin County, Minnesota.

Has caused the same to be surveyed and platted as GEORGE ANDERSON ADDITION and does hereby donate and dedicate to the public, for public use forever the avenues and drainage and utility easements as shown on said plat.

In witness whereof said GLADYS V. ANDERSON, a single person, has hereunto set her hand this 18<sup>th</sup> day of November, 1994.

SIGNED: Gladys V. Anderson  
GLADYS V. ANDERSON

STATE OF MINNESOTA  
COUNTY OF Hennepin

The foregoing instrument was acknowledged before me this 18<sup>th</sup> day of November, 1994 by GLADYS V. ANDERSON, a single person



Shirley M. Garrett  
Notary Public, Hennepin County, Minnesota  
My Commission Expires Jan 10, 1997

I hereby certify that I have surveyed and platted the property described on this plat as GEORGE ANDERSON ADDITION; that this plat is a correct representation of said survey; that all distances are correctly shown in feet and hundredths of a foot; that all monuments have been correctly placed in the ground as shown on said plat or will be placed as required by the local governmental unit as designated on said plat, that the outside boundary lines are correctly designated, and that there are no wetlands as defined in Minnesota Statutes, Section 505.02, subdivision 1, to be designated on said plat.

Edward H. Sunde  
Edward H. Sunde, Land Surveyor  
Minnesota License No. 8612

STATE OF MINNESOTA  
COUNTY OF Hennepin

The foregoing surveyor's certificate was acknowledged before me this 15<sup>th</sup> day of November, 1994 by Edward H. Sunde, Land Surveyor.



Shirley M. Garrett  
Notary Public, Hennepin County, Minnesota  
My commission Expires Jan 10, 1997

BLOOMINGTON, MINNESOTA

This plat of GEORGE ANDERSON ADDITION was approved and accepted by the City Council of the City of Bloomington, Minnesota, at a regular meeting thereof, held this \_\_\_\_\_ day of \_\_\_\_\_, 199\_\_\_\_. If applicable, the written comments and recommendations of the Commissioner of Transportation and the County Highway Engineer have been received by the City or the prescribed 30 day period has elapsed without receipt of such comments and recommendations, as provided by Minn. Statutes, Section 505.03, Subd. 2.

CITY COUNCIL OF BLOOMINGTON, MINNESOTA

BY: \_\_\_\_\_ its Mayor BY: \_\_\_\_\_ its Manager

TAXPAYER SERVICES DIVISION, Hennepin County, Minnesota

I hereby certify that taxes payable in 199\_\_ and prior years have been paid for land described on this plat. Dated this \_\_\_\_\_ day of \_\_\_\_\_, 199\_\_.

Patrick H. O'Connor, Hennepin County Auditor BY: \_\_\_\_\_ Deputy

SURVEY SECTION, Hennepin County, Minnesota

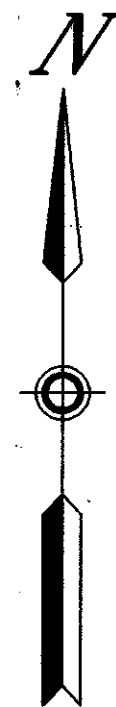
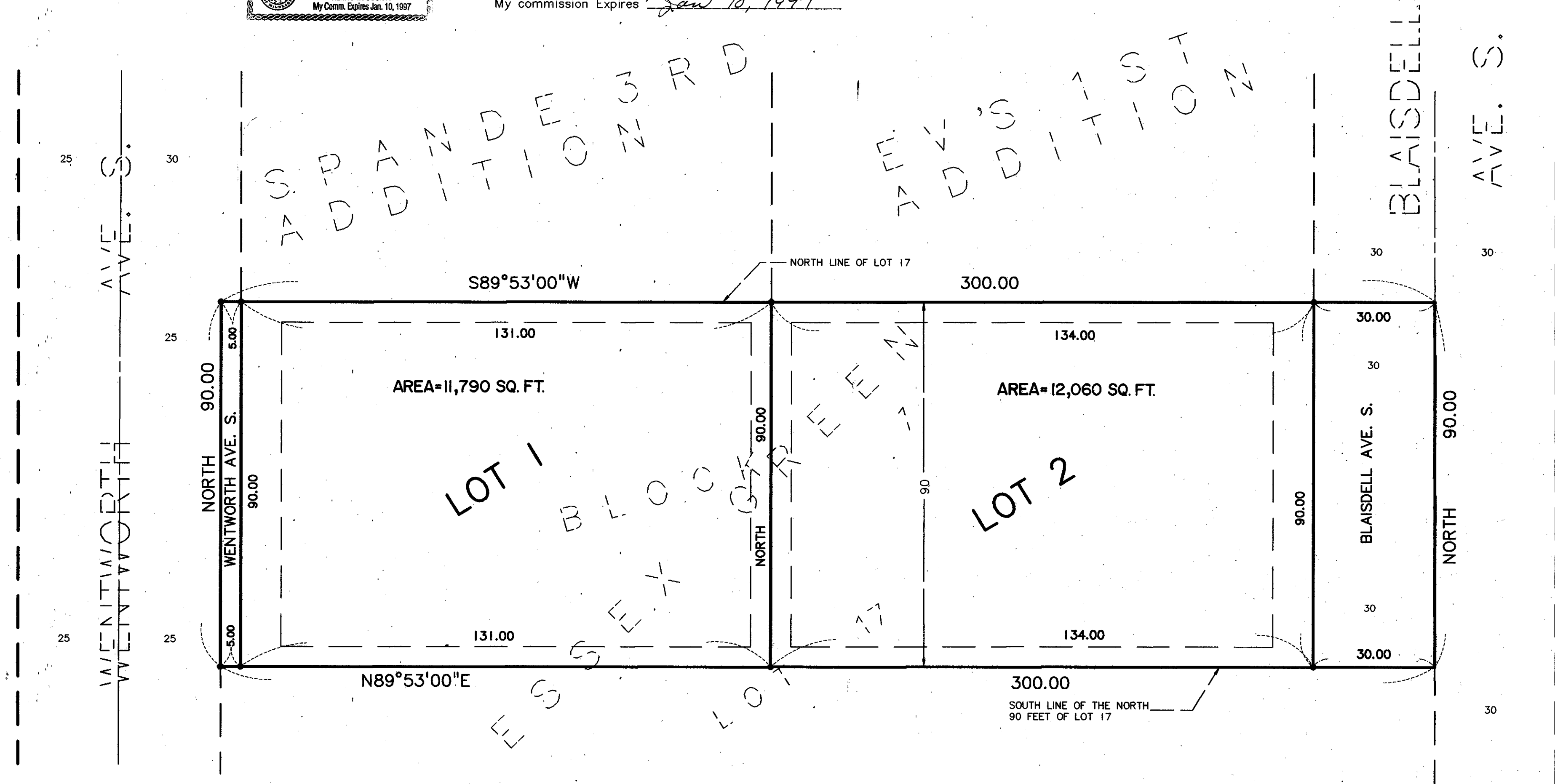
Pursuant to MINNESOTA STATUTES, Sec. 383B.565 (1969), this plat has been approved this \_\_\_\_\_ day of \_\_\_\_\_, 199\_\_.

Gary F. Caswell, Hennepin County Surveyor BY: \_\_\_\_\_

COUNTY RECORDER, Hennepin County, Minnesota

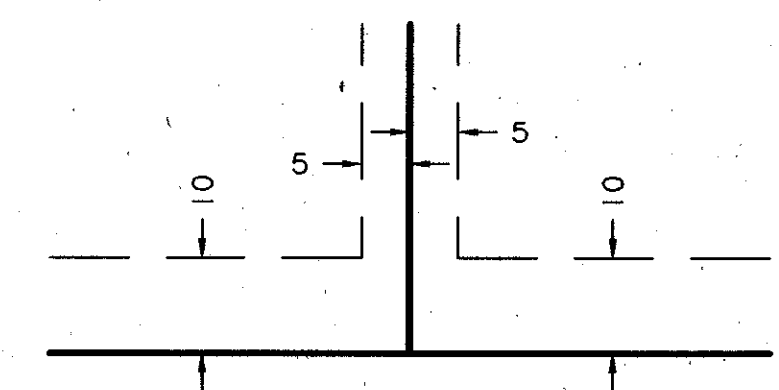
I hereby certify that the within plat of GEORGE ANDERSON ADDITION was filed for record in this office this \_\_\_\_\_ day of \_\_\_\_\_, 199\_\_ at \_\_\_\_\_ o'clock \_\_\_\_M.

R. Dan Carlson, County Recorder BY: \_\_\_\_\_ Deputy



• Denotes iron monument  
Bearing shown are assumed

DRAINAGE AND UTILITY EASEMENTS ARE SHOWN THUS:



Being 5 feet in width, unless otherwise indicated, and adjoining lot lines, and 10 feet in width and adjoining right of way lines, as shown on the plat.