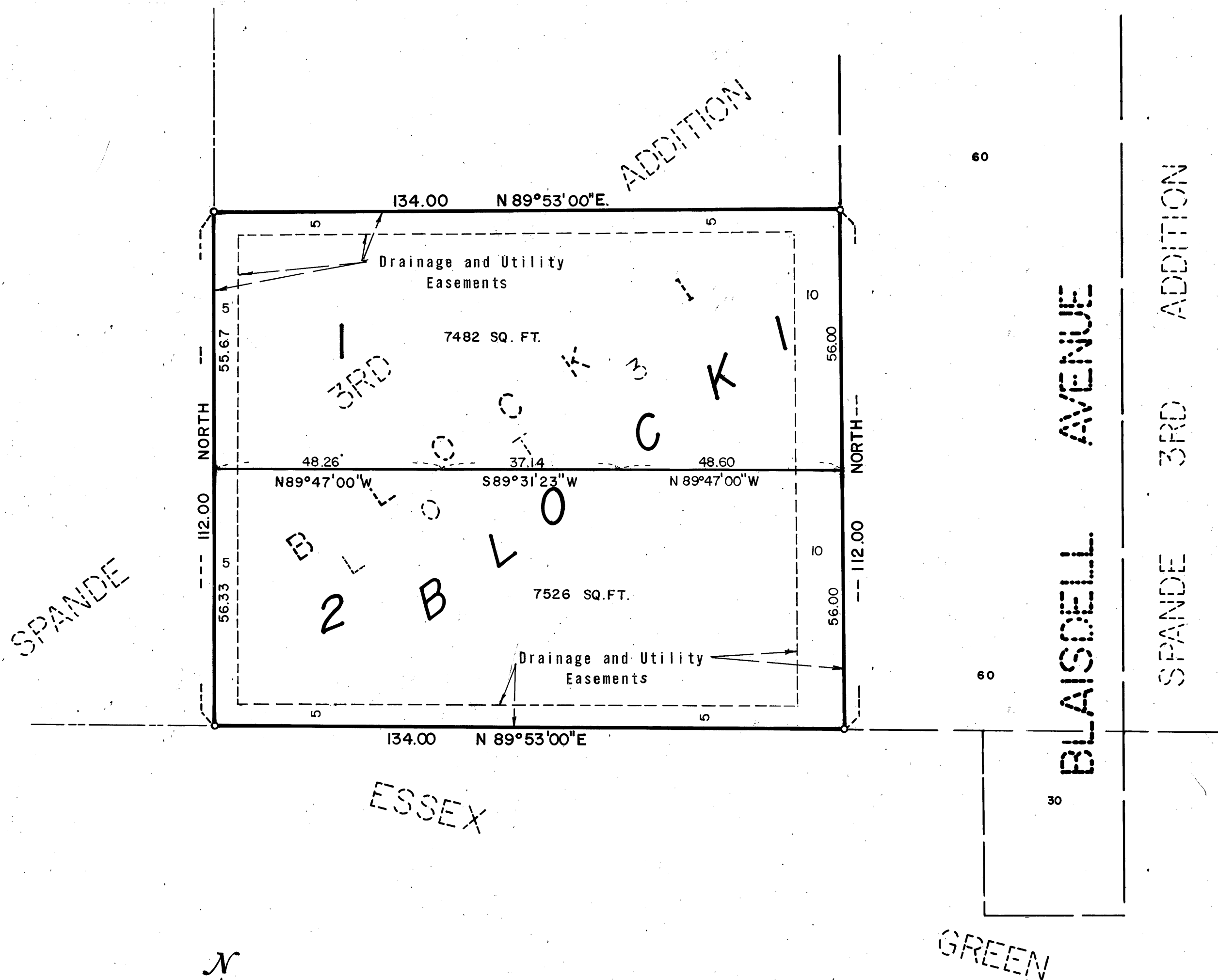


EV'S 1ST ADDITION



KNOW ALL MEN BY THESE PRESENTS: That Bloom-Dale Shops, Inc., a Minnesota corporation, owner and proprietor of the following described property situate in the County of Hennepin, State of Minnesota, to wit:

Lot 3, Block 1, SPANDE 3RD ADDITION, according to the recorded plat thereof on file in the Register of Deeds, Hennepin County, Minnesota.

Has caused the same to be surveyed and platted as EV'S 1ST ADDITION and does hereby donate and dedicate to the public for public use forever, the drainage and utility easements as shown on this plat.

In witness whereof Bloom-Dale Shops, Inc., has caused these presents to be signed by its proper officers and its corporate seal to be hereunto affixed this 12th day of October A.D., 1972.

IN PRESENCE OF:

SIGNED: Bloom-Dale Shops, Inc.

Witness Ronald E. Anderson Witness Arvid T. Bodin Arvid T. Bodin Arvid T. Bodin its Pres.

State of Minnesota
County of Dakota

On this 12th day of October A.D., 1972, before me, a Notary Public, within and for said County and State, personally appeared OREST M. SPANDE to me personally known who being by me duly sworn did say that he is the PRESIDENT of Bloom-Dale Shops, Inc., the corporation named in the foregoing instrument; that the seal affixed to said instrument is the corporate seal of said corporation; that said instrument was signed and sealed in behalf of said corporation by authority of its Board of Directors and said OREST M. SPANDE acknowledged said instrument to be the free act and deed of said corporation.

Arvid J. Dawson Arvid J. Dawson
Notary Public, Dakota County, Minnesota
My Commission Expires November 20, 1975

I hereby certify that I have surveyed and platted the property described on this plat as EV'S 1ST ADDITION; that this plat is a correct representation of said survey; that all distances are correctly shown on said plat in feet and decimals of a foot; that all monuments have been correctly placed in the ground as shown; that the outside boundary lines are correctly designated; and that there are no wet lands or public highways to be designated on said plat.

Arvid T. Bodin
Arvid T. Bodin
Land Surveyor
Minn. Reg. No. 9396

State of Minnesota
County of Hennepin

The surveyor's certificate was subscribed and sworn to before me, a Notary Public, this 12th day of October A.D., 1972.

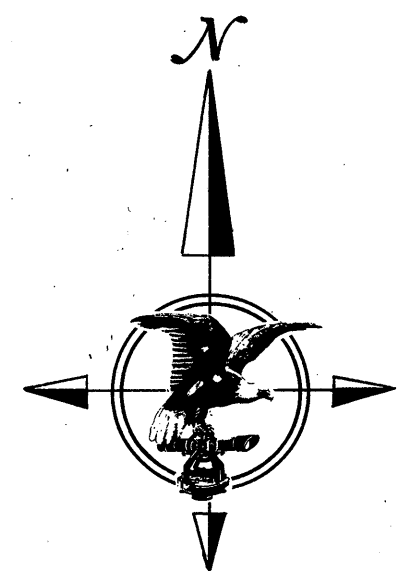
Wesley B. Baillif
WESLEY B. BAILLIF
Notary Public, Hennepin County, Minn.
My Commission Expires April 11, 1978. Notary Public, Hennepin County, Minnesota
My Commission Expires April 11, 1978

The plat of EV'S 1ST ADDITION was accepted by the City Council of Bloomington, Minnesota at a regular meeting thereof held this ___ day of ___ A.D., 1972.

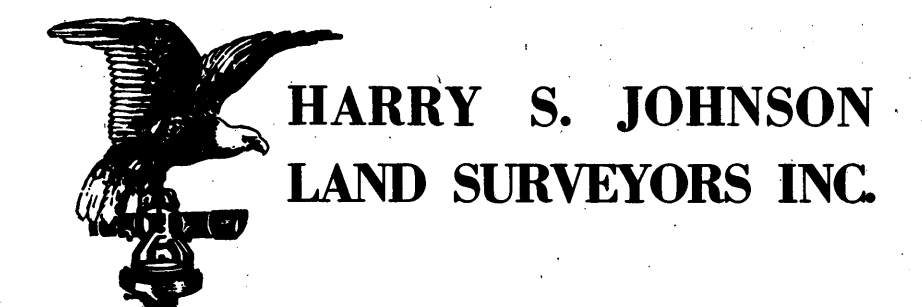
CITY COUNCIL OF BLOOMINGTON, MINNESOTA
By: _____ Mayor By: John A. Ridge Manager

Pursuant to Chapter 810, Minnesota Laws of 1969, this plat has been approved this ___ day of ___, 1972.

By: _____
Elmer J. Peterson
Hennepin County Surveyor



SCALE: 1 INCH = 20 FEET
O DENOTES IRON MONUMENT
BEARINGS SHOWN ARE ASSUMED



HARRY S. JOHNSON
LAND SURVEYORS INC.