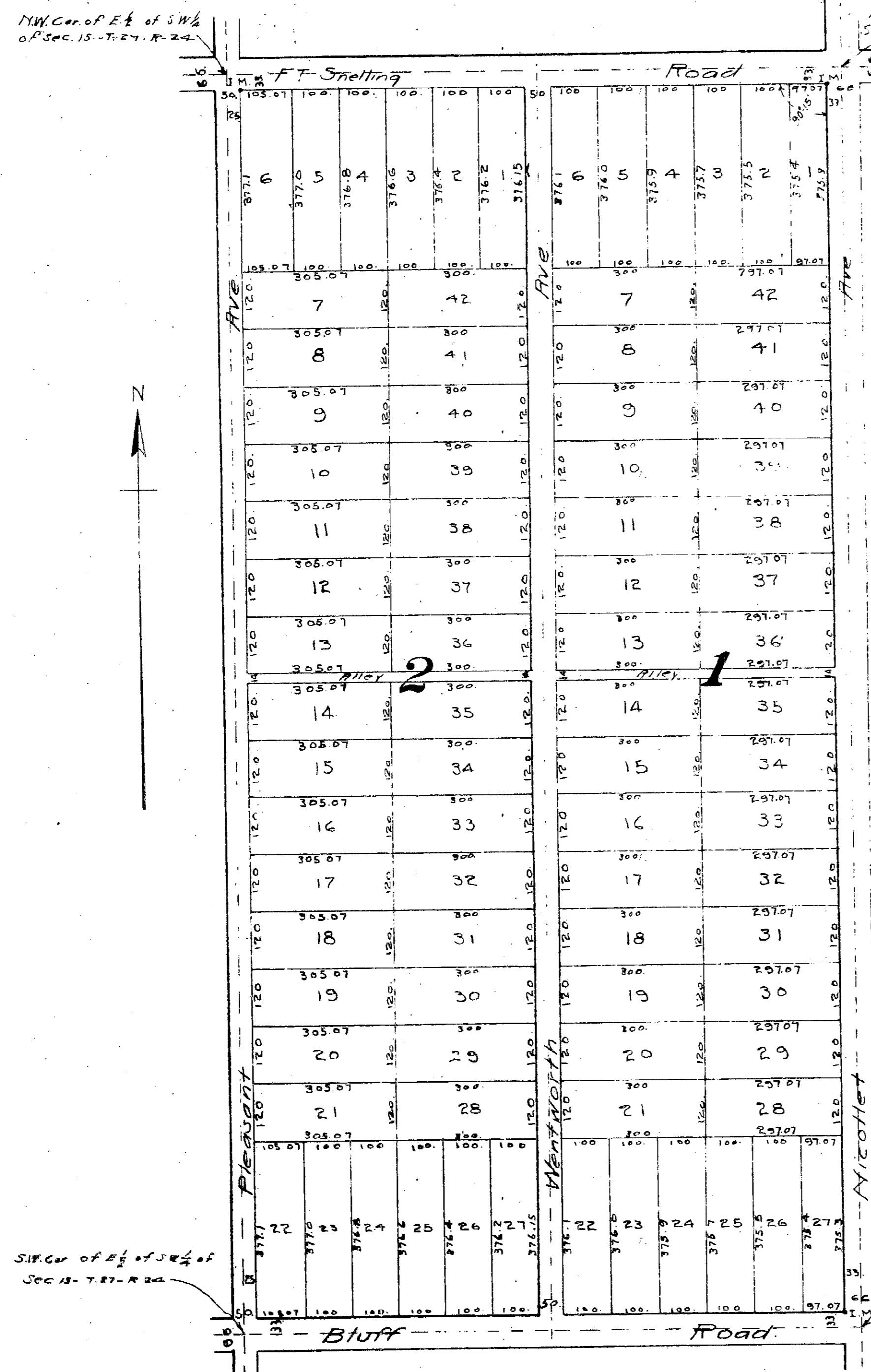


# ESSEX GREEN

## HENNEPIN CO., MINN.

J.E. Egan & Co.  
Civil Engineers

Scale 1" = 200'



Know all men by these presents that Felix St Martin, widow, and her heirs and assigns of the following described property situate in the State of Minnesota and County of Hennepin to wit: Part 1/2 of 1/2 of SW 1/4 of Section fifteen (15) Township twenty-seven (27) North Range twenty-four (24) West, has caused the same to be surveyed and platted as Essex Green and do hereby divide and dedicate to the public use thereof the streets, avenues and alleys as shown on annexed plat in witness whereof, said Felix St Martin has hereunto set his hand and seal on this 21<sup>st</sup> day of October A.D. 1912

*Felix St Martin*  
Felix St Martin

*Felix St Martin*  
Felix St Martin (Seal)

State of Minnesota) On this 21<sup>st</sup> day of October A.D. 1912 before me personally appeared Felix St Martin, widow, known to be the person described in and who executed the foregoing instrument and he acknowledged that he executed the same as his own free act and deed

*J. Fuller*  
J. Fuller  
Notary Public, Hennepin County, Minnesota.  
My commission expires Jan 9, 1914

State of Minnesota) I do hereby certify that I have surveyed and platted the property described on this plat as Essex Green, that this plat is a correct representation of said survey, that all distances are correctly shown on the plat in feet and decimals of a foot, that the monuments for corners of future surveys have been correctly placed in the ground as shown on the plat, that the outside boundary lines are correctly designated on the plat that the topography of the land is correctly shown on the plat and that there are no wet lands or public highways to be designated on this plat other than as shown thereon

*J.E. Egan*  
J.E. Egan  
Surveyor

Have certificate subscribed and sworn to before me on this 19<sup>th</sup> day of October A.D. 1912.

*F. H. Hulde*  
F. H. Hulde  
Notary Public, Hennepin County, Minnesota.  
My commission expires Feb. 1, 1915

This plat was approved by the Board of County Commissioners of Hennepin County, Minnesota, at a regular meeting thereof held on the 7<sup>th</sup> day of May A.D. 1912.

*R. L. Lee*  
County Auditor  
*J. G. Chapman*  
Deputy

OFFICE OF REGISTER OF DEEDS,  
HENNEPIN COUNTY, MINNESOTA

I hereby certify that the within Plat of Essex Green

was filed in the office for record on this 21<sup>st</sup> day of Dec. A.D. 1912, at 2<sup>30</sup> o'clock P.M.

and was duly Recorded in Book 17 of Plats, Page 11.

August, No. 107  
By *A. P. Erickson*  
A. P. Erickson, Auditor  
Deputy

Taxes Paid and Transfer Entered

DEC 20 1912

AL. P. ERICSON, Auditor,  
Hennepin County, Minn.

*Frank E. Haycock*  
Frank E. Haycock  
County Surveyor

*Approved Elmer W. Gray*  
Elmer W. Gray  
all for County Commissioners

702