

The undersigned, being first duly sworn under oath, certifies and deposes that these Floor Plans of Condominium No. 487, ALDRICH MANOR, A CONDOMINIUM, being located upon

Lot 2, Block 1, WHITE DIAMOND ESTATES, according to the plat thereof on file or of record in the office of the Registrar of Titles, in and for Hennepin County, Minnesota.

fully and accurately depicts all information required by Minnesota Statutes Section 515A 2-110. Dated this 27th day of August, 1984.

Larry R. Couture
 Larry R. Couture, Land Surveyor
 Minnesota License No. 9018

STATE OF MINNESOTA)
 COUNTY OF HENNEPIN) SS.

The foregoing instrument was acknowledged before me this 27th day of August, 1984, by Larry R. Couture, a registered professional surveyor.

Joyce W. M. Couture
 Notary Public, Hennepin County, Minnesota
 My commission expires Feb. 2, 1990

JOYCE W. M. COUTURE
 NOTARY PUBLIC - MINNESOTA
 HENNEPIN COUNTY
 My commission expires Feb. 2, 1990

CONDOMINIUM NUMBER 487 ALDRICH MANOR, A CONDOMINIUM

THESE FLOOR PLANS ARE PART OF THE DECLARATION

DOCUMENT NUMBER _____
 FILED ON THE _____ DAY OF _____ A.D., 198____
 HENNEPIN COUNTY REGISTRAR OF TITLES
 REGISTERED VOL. _____ PAGE _____

Frank L. Reese, a registered professional Architect for the State of Minnesota pursuant to Minnesota Statutes Section 515A 2-110 (b) does hereby certify that all structural components and mechanical systems serving more than one unit of all buildings containing or comprising any units hereby created are substantially completed consistent with the Floor Plans for Condominium No. 487, ALDRICH MANOR, A CONDOMINIUM. Dated this 27th day of August, 1984.

Frank L. Reese
 Architect
 Minnesota Registration No. 7055

STATE OF MINNESOTA)
 COUNTY OF HENNEPIN) SS.

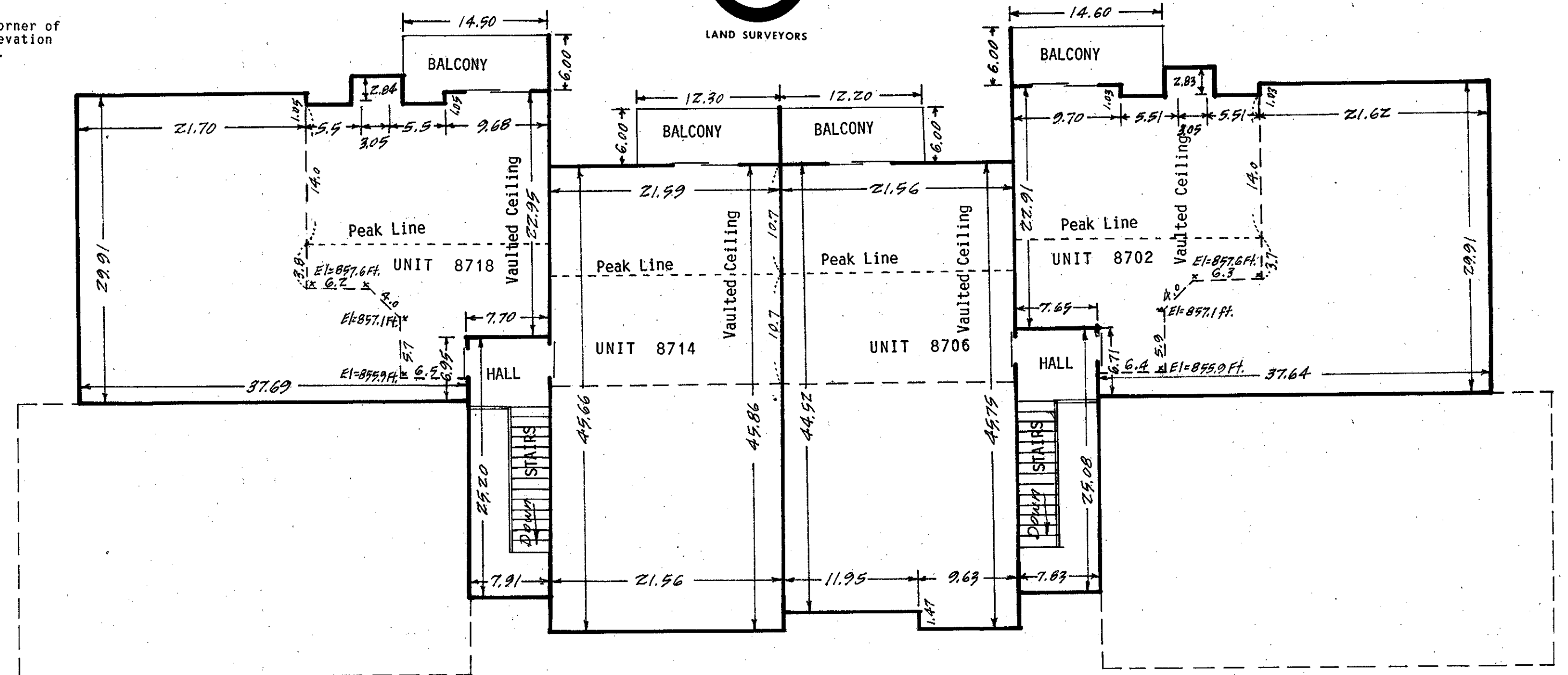
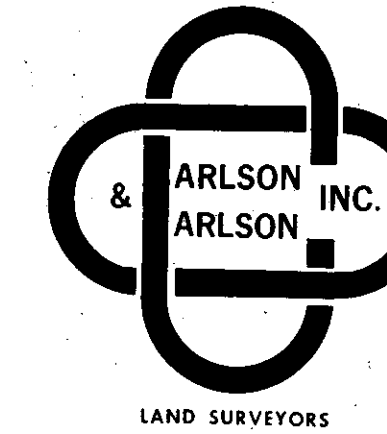
The foregoing instrument was acknowledged before me this 27th day of August, 1984, by *Frank L. Reese*, a registered professional Architect.

Joyce W. M. Couture
 Notary Public, Hennepin County, Minnesota
 My commission expires Feb. 2, 1990

JOYCE W. M. COUTURE
 NOTARY PUBLIC - MINNESOTA
 HENNEPIN COUNTY
 My commission expires Feb. 2, 1990

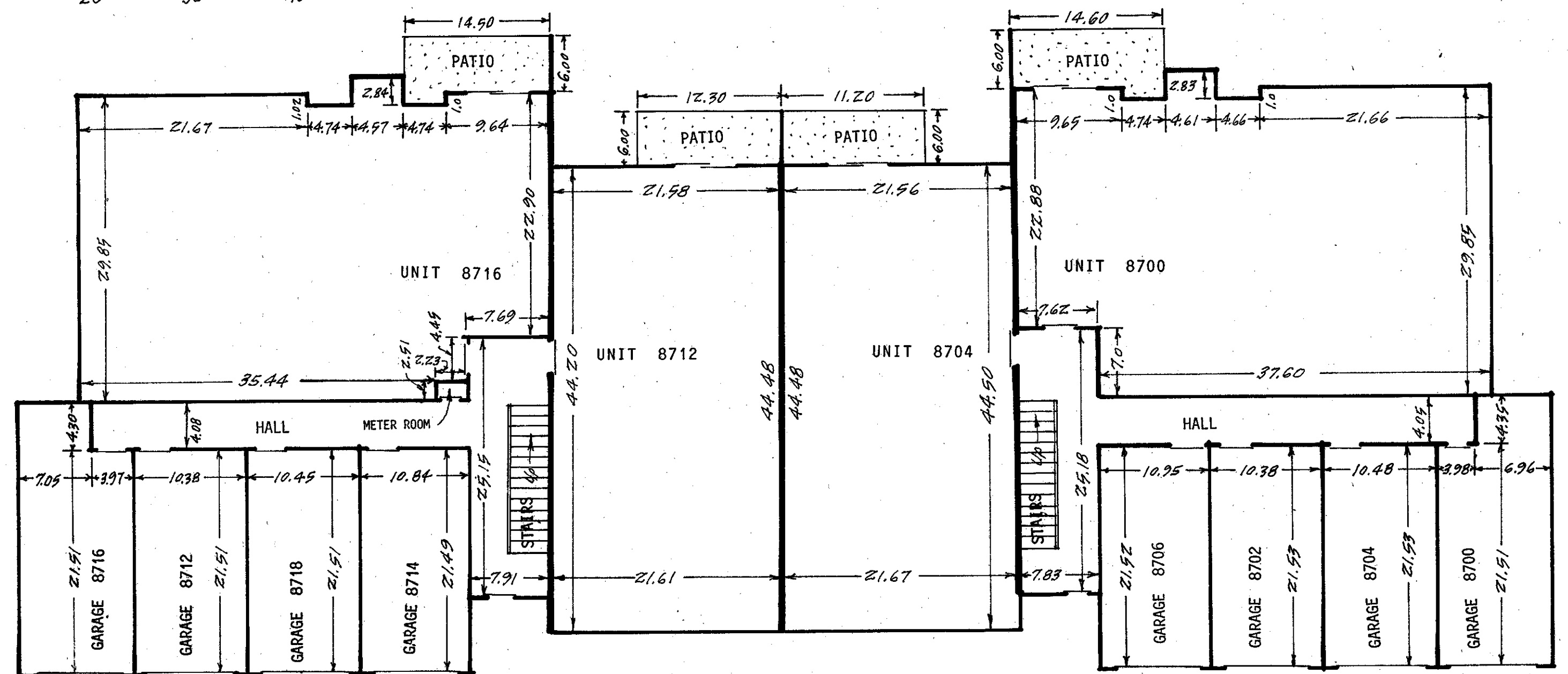
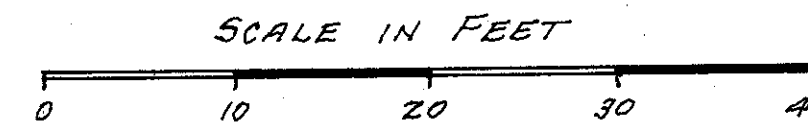
NOTE: All pavements, surfaces, concrete walks, steps and improvements are common elements, unless indicated otherwise on the individual floor plans.
 o Denotes iron monument.
 Bearings shown are on an assumed basis.

Bench Mark, top of hydrant by northeast corner of Lot 1, Block 1, WHITE DIAMOND ESTATES, elevation is 832.07 feet, City of Bloomington datum.



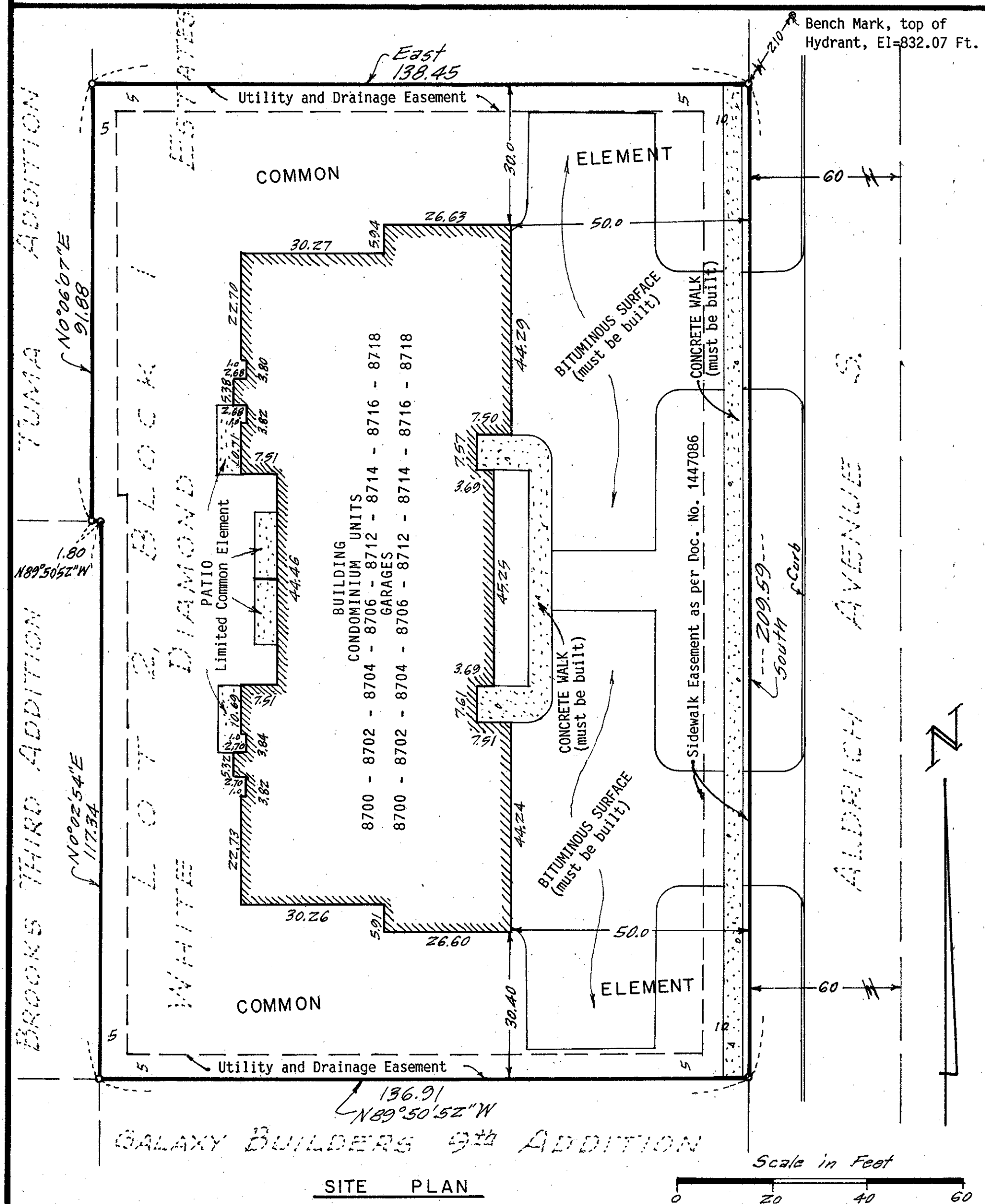
SECOND FLOOR LEVEL Scale: 1" = 10'

Floor Elevation is 847.43 Ft. Ceiling Elevation is 855.49 Ft. Ceiling Vault Elevation is 857.72 Ft. Hallways are Common Elements. Balconies are Limited Common Elements.



FIRST FLOOR LEVEL Scale: 1" = 10'

Floor Elevation is 837.36 Ft. Ceiling Elevation is 845.40 Ft. Garage Floor Elevation is 836.83 Meter Room, Hallways and Stairs are Common Elements. Garages and Patios are Limited Common Elements.



SITE PLAN

