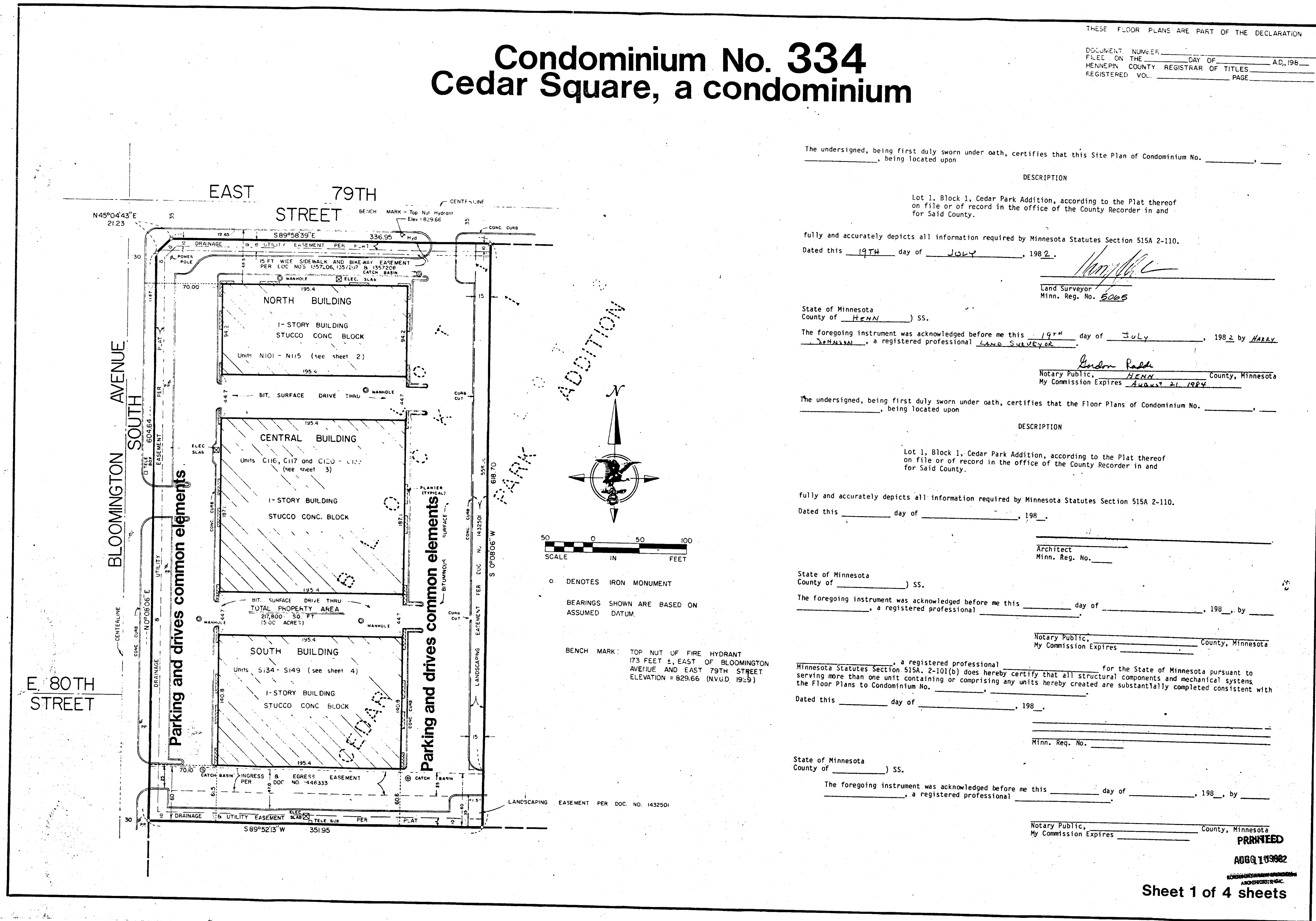


# Condominium No. 334 Cedar Square, a condominium

THESE FLOOR PLANS ARE PART OF THE DECLARATION  
DOCUMENT NUMBER \_\_\_\_\_ DAY OF \_\_\_\_\_ AD, 198\_\_\_\_  
FILED ON THE \_\_\_\_\_ HENNEPIN COUNTY REGISTRAR OF TITLES  
REGISTERED VOL. \_\_\_\_\_ PAGE \_\_\_\_\_



The undersigned, being first duly sworn under oath, certifies that this Site Plan of Condominium No. \_\_\_\_\_, being located upon \_\_\_\_\_

DESCRIPTION

Lot 1, Block 1, Cedar Park Addition, according to the Plat thereof on file or of record in the office of the County Recorder in and for Said County.

fully and accurately depicts all information required by Minnesota Statutes Section 515A 2-110.  
Dated this 19TH day of JULY, 1982.

*[Signature]*  
Land Surveyor  
Minn. Reg. No. 5005

State of Minnesota  
County of HENN ) SS.

The foregoing instrument was acknowledged before me this 19TH day of JULY, 1982 by HARRY J. HALL, a registered professional LAND SURVEYOR.

*[Signature]*  
Notary Public, HENN County, Minnesota  
My Commission Expires AUGUST 21, 1984

The undersigned, being first duly sworn under oath, certifies that the Floor Plans of Condominium No. \_\_\_\_\_, being located upon \_\_\_\_\_

DESCRIPTION

Lot 1, Block 1, Cedar Park Addition, according to the Plat thereof on file or of record in the office of the County Recorder in and for Said County.

fully and accurately depicts all information required by Minnesota Statutes Section 515A 2-110.  
Dated this \_\_\_\_\_ day of \_\_\_\_\_, 198 .

Architect  
Minn. Reg. No. \_\_\_\_\_

State of Minnesota  
County of \_\_\_\_\_ ) SS.

The foregoing instrument was acknowledged before me this \_\_\_\_\_ day of \_\_\_\_\_, 198 , by \_\_\_\_\_, a registered professional \_\_\_\_\_.

Notary Public, \_\_\_\_\_ County, Minnesota  
My Commission Expires \_\_\_\_\_

Minnesota Statutes Section 515A, 2-101(b) does hereby certify that all structural components and mechanical systems serving more than one unit containing or comprising any units hereby created are substantially completed consistent with the Floor Plans to Condominium No. \_\_\_\_\_.

Dated this \_\_\_\_\_ day of \_\_\_\_\_, 198 .

Minn. Reg. No. \_\_\_\_\_

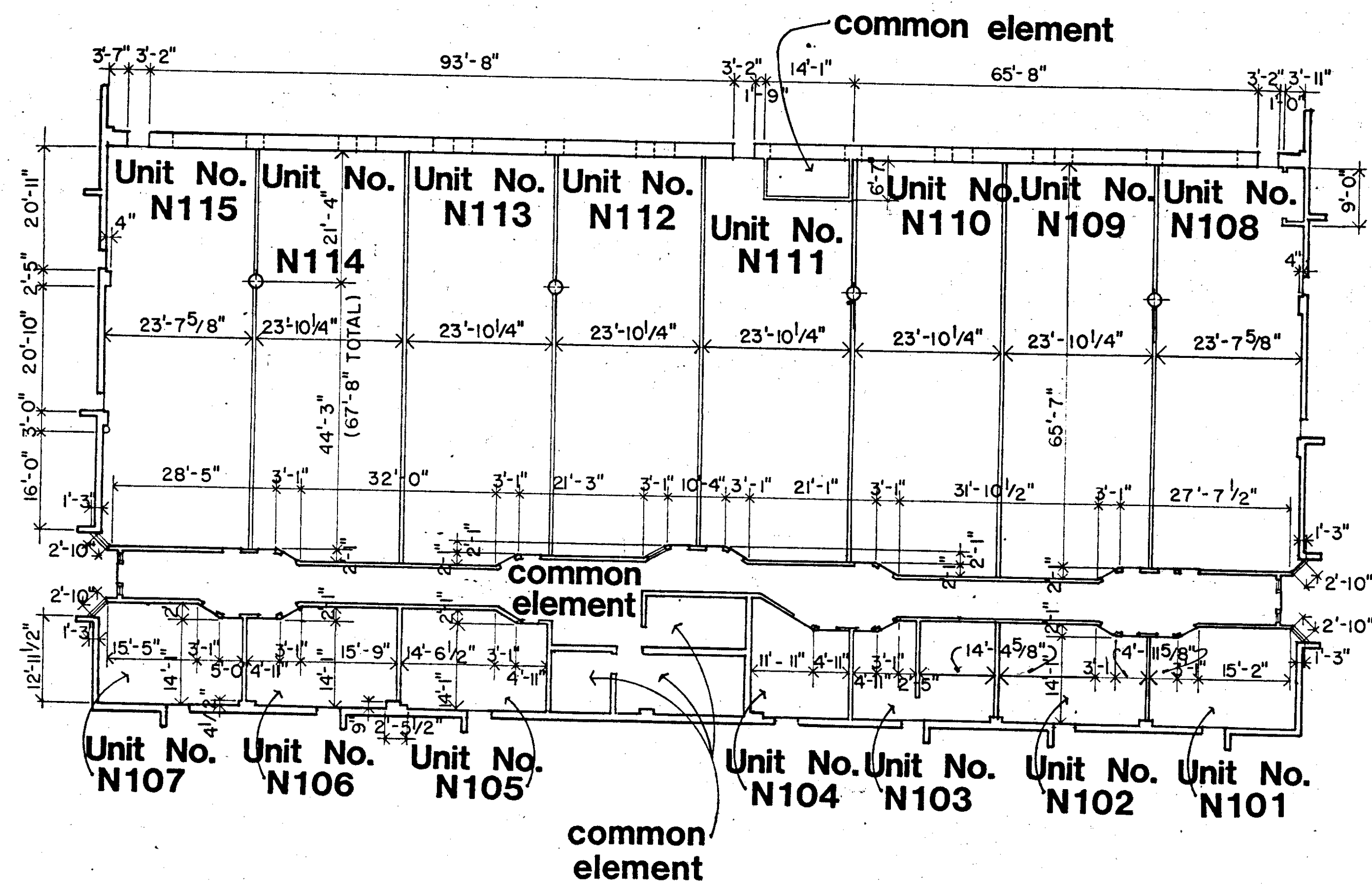
State of Minnesota  
County of \_\_\_\_\_ ) SS.

The foregoing instrument was acknowledged before me this \_\_\_\_\_ day of \_\_\_\_\_, 198 , by \_\_\_\_\_, a registered professional \_\_\_\_\_.

Notary Public, \_\_\_\_\_ County, Minnesota  
My Commission Expires \_\_\_\_\_

**PRINTED**  
**8889109882**  
**Sheet 1 of 4 sheets**

# Condominium No. 334 Cedar Square, a condominium

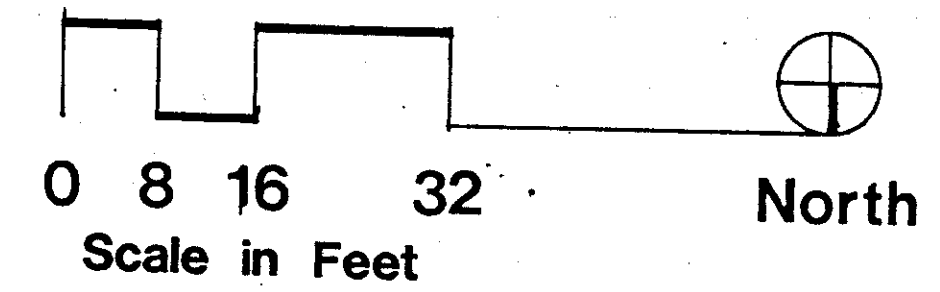


## North Building

Lower Horizontal Boundary Elevation 828.95

Upper Horizontal Boundary Elevation 11'-0"  
above Lower Horizontal Boundary

"Subject to the Declaration, any unit may be converted by the Declarant to create additional units or common elements."



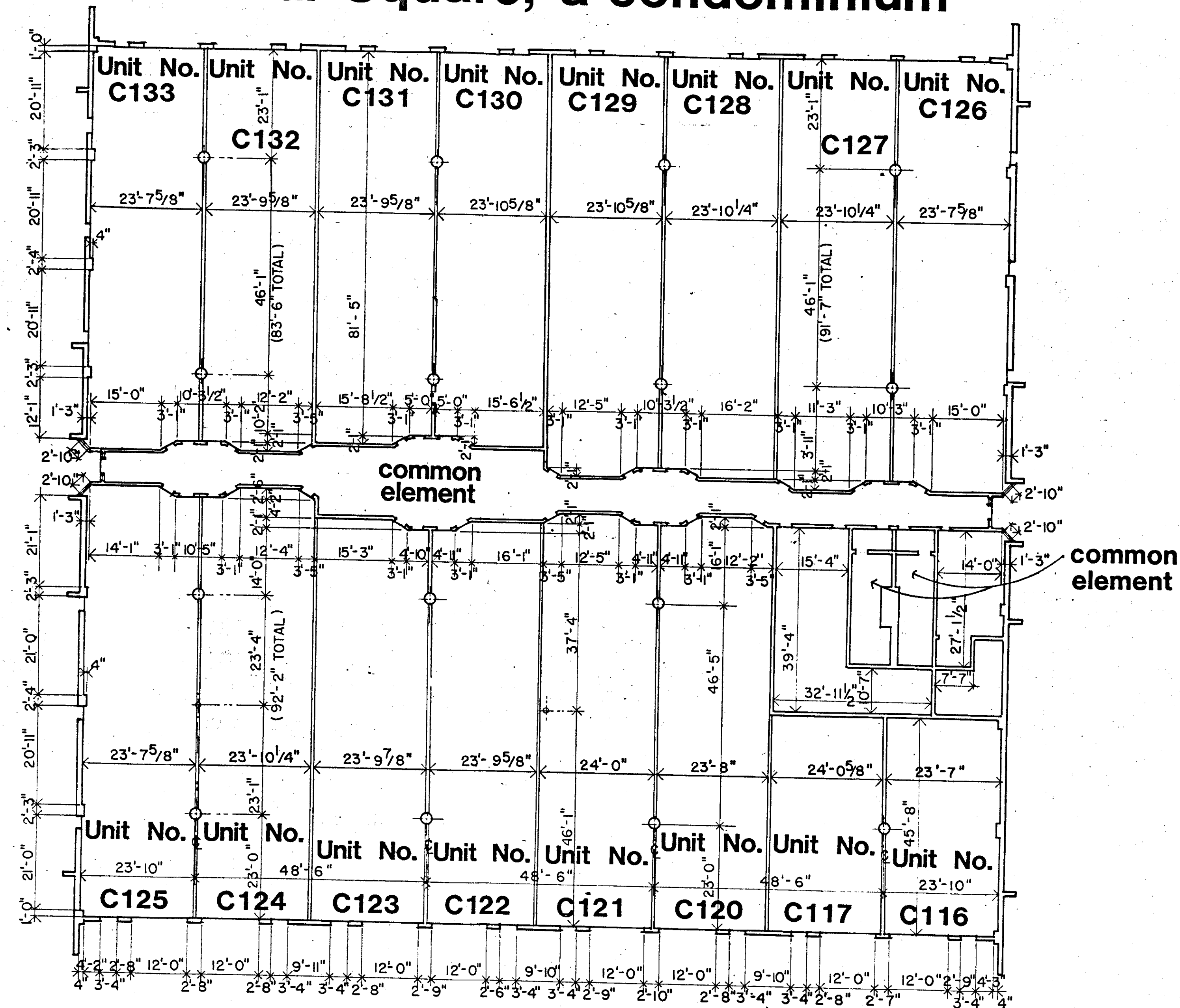
PRINTED

AUG 11 1982

KORUNSKY-ERANK-ERIKSSON  
ARCHITECTS, INC.

Sheet 2 of 4 sheets

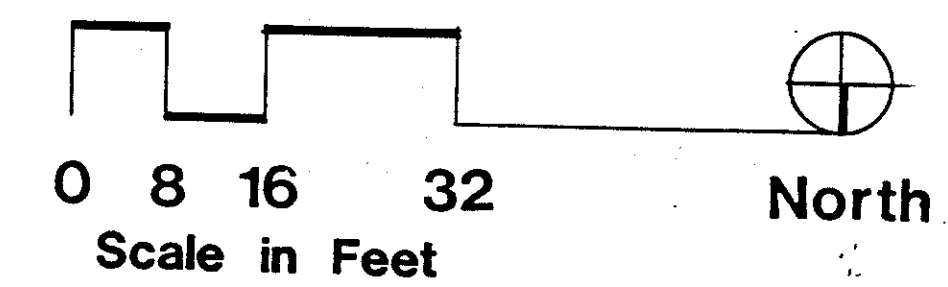
# Condominium No. 334 Cedar Square, a condominium



## Central Building

Lower Horizontal Boundary Elevation 828.95  
Upper Horizontal Boundary Elevation 11'-0"  
above Lower Horizontal Boundary

"Subject to the Declaration, any unit may be converted by the Declarant to create additional units or common elements."



PRINTED

AUG 11 1982

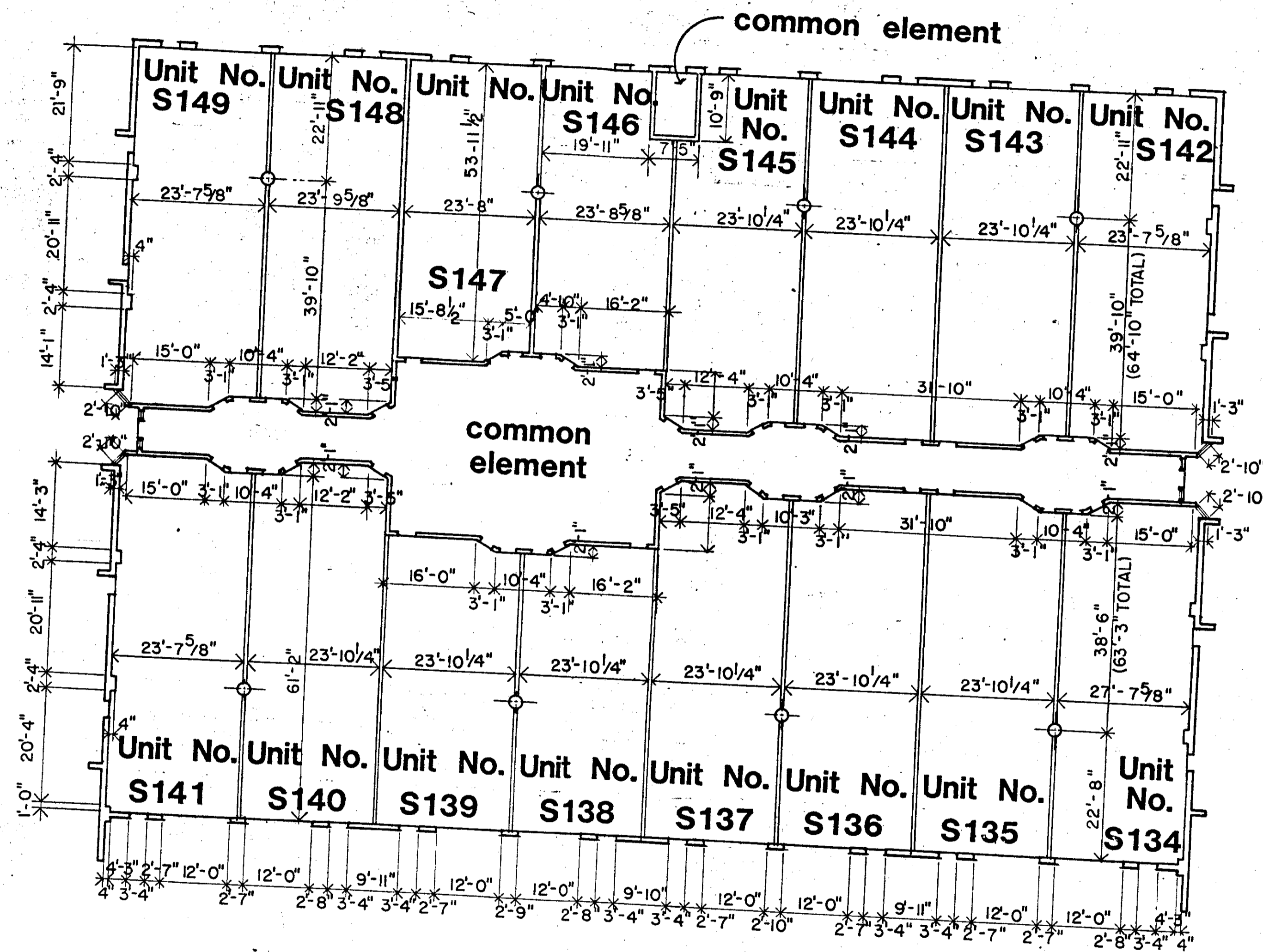
KOHLINSKY-KRANK-ERICKSON  
ARCHITECTS, INC.

Sheet 3 of 4 sheets



OFFICIAL

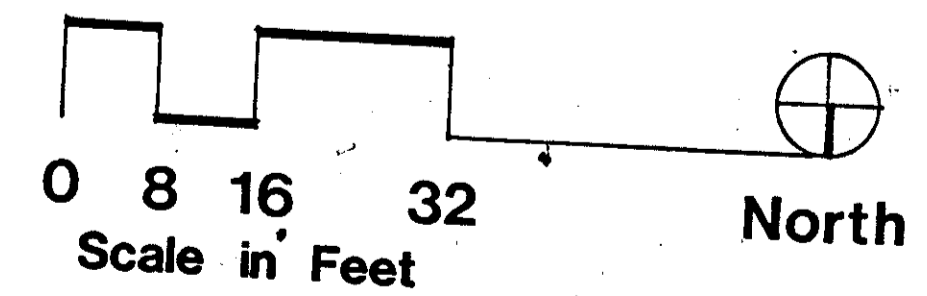
# Condominium No. 334 Cedar Square, a condominium



## South Building

Lower Horizontal Boundary Elevation 828.95  
 Upper Horizontal Boundary Elevation 11'-0"  
 above Lower Horizontal Boundary

"Subject to the Declaration, any unit may be converted  
 by the Declarant to create additional units or common  
 elements."



PRINTED

AUG 11 1982

KORINSKY-KRANE-ERIKSON  
ARCHITECTS, INC.

Sheet 4 of 4 sheets