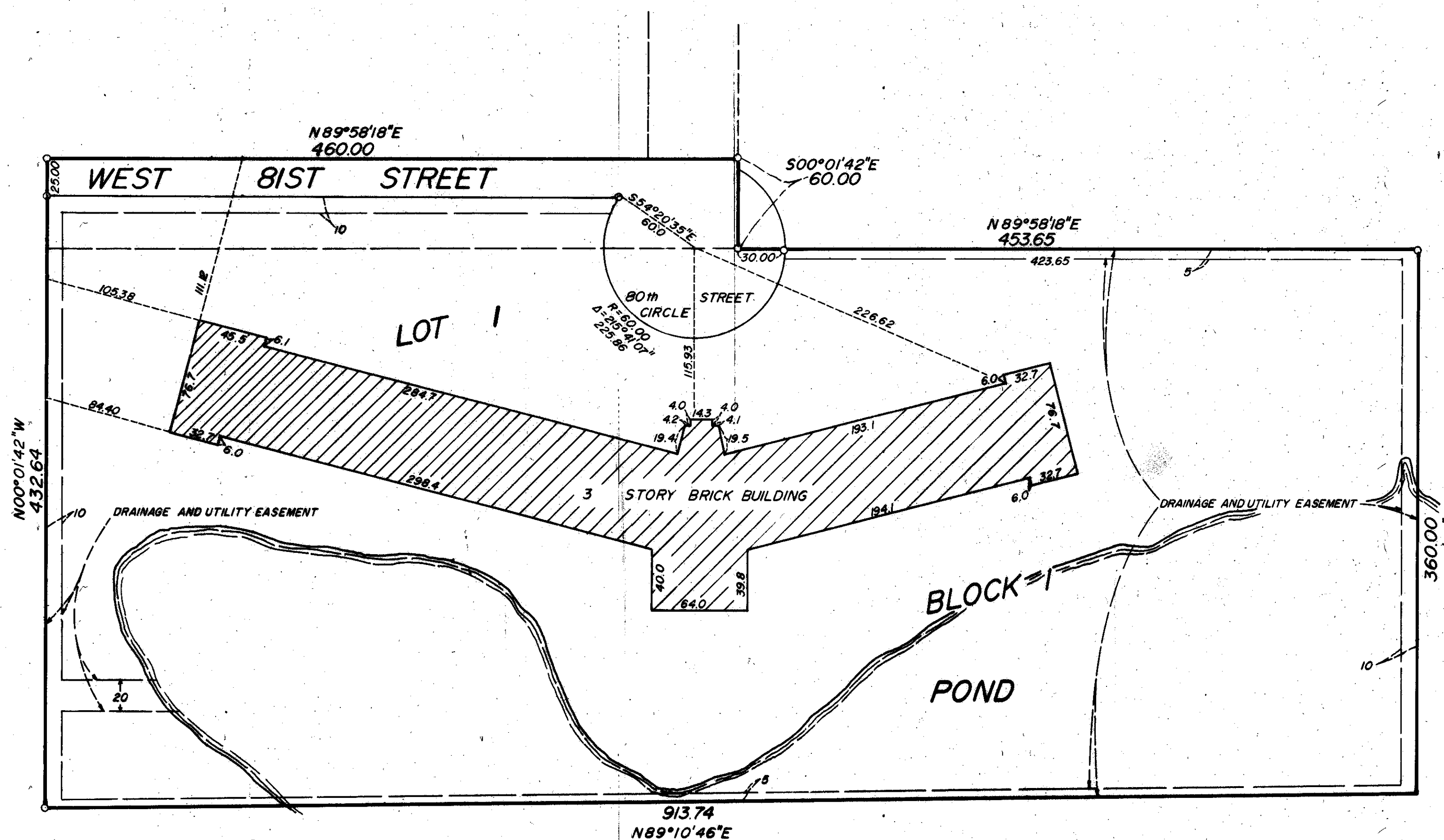
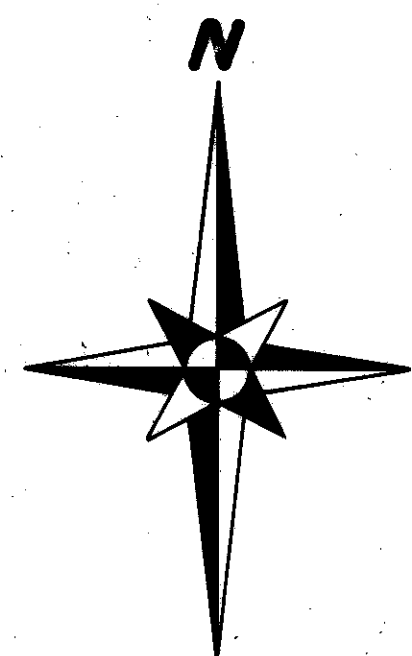
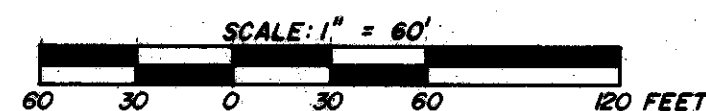


APARTMENT OWNERSHIP NO. 130 FOUNTAIN LAKE, A CONDOMINIUM

DESCRIPTION
LOT 1, BLOCK 1
FOUNTAIN LAKE 1st ADDITION
HENNEPIN COUNTY, MINNESOTA



THE UNDERSIGNED, BEING FIRST DULY SWORN UNDER OATH, CERTIFIES AND DEPOSES THAT THE WITHIN SET OF FLOOR PLANS OF FOUNTAIN LAKE, A CONDOMINIUM, CONSISTING OF 13 PAGES NUMBERED CONSECUTIVELY PAGES 1 THROUGH 13, REPRESENTS AN ACCURATE COPY OF PORTIONS OF THE BUILDING AS FILED WITH, AND APPROVED BY, THE CITY BLOOMINGTON AND FURTHER THAT THE SAME FULLY AND ACCURATELY DEPICTS THE LAYOUT, LOCATION, APARTMENT NUMBERS AND DIMENSIONS OF THE APARTMENTS AS BUILT.

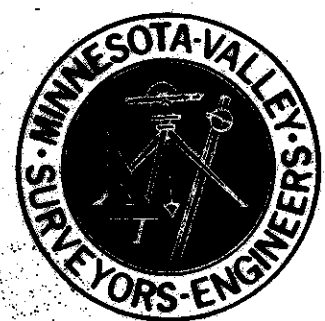


GORDON L. CHRISTENSON, MINN. REG. NO. 9293

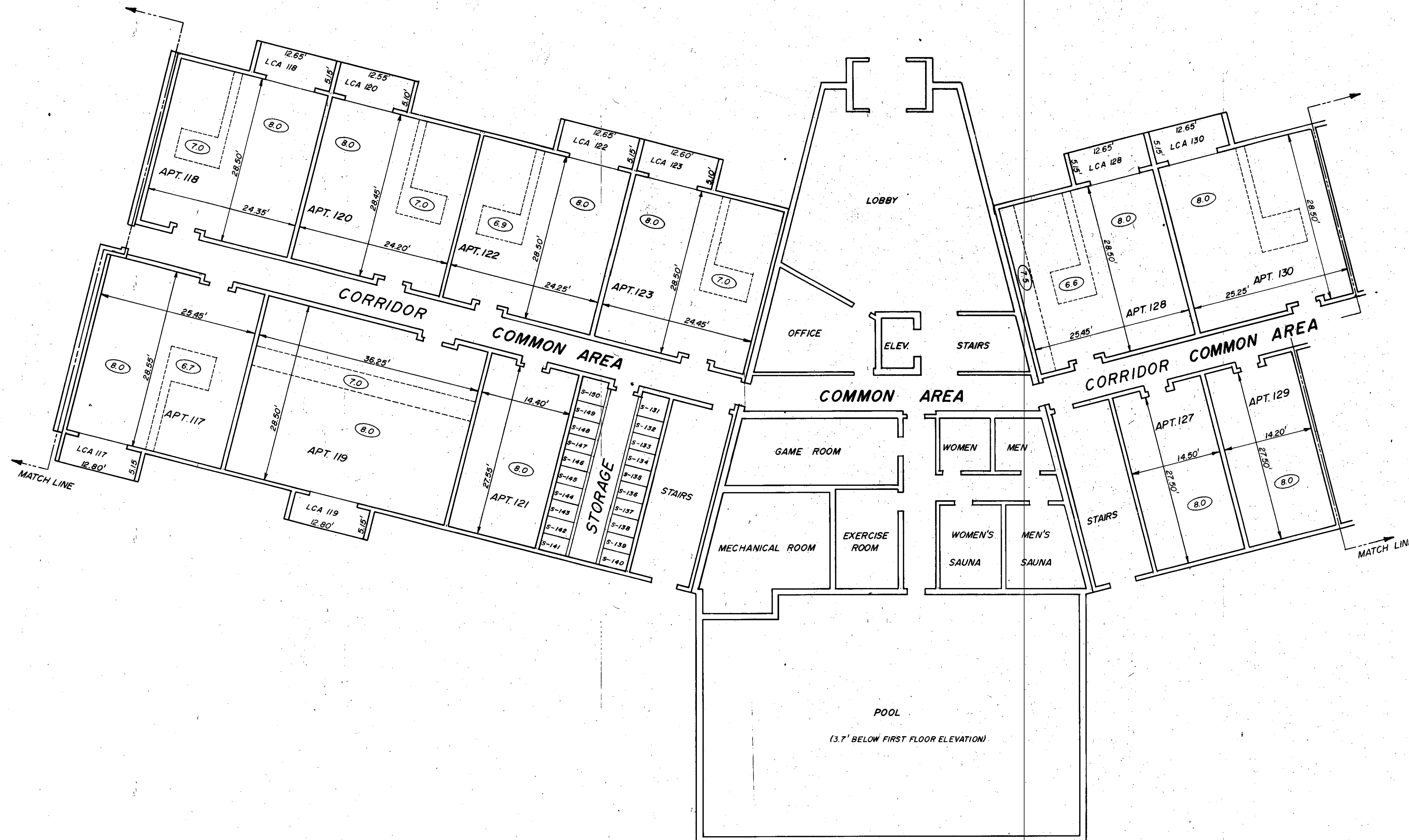
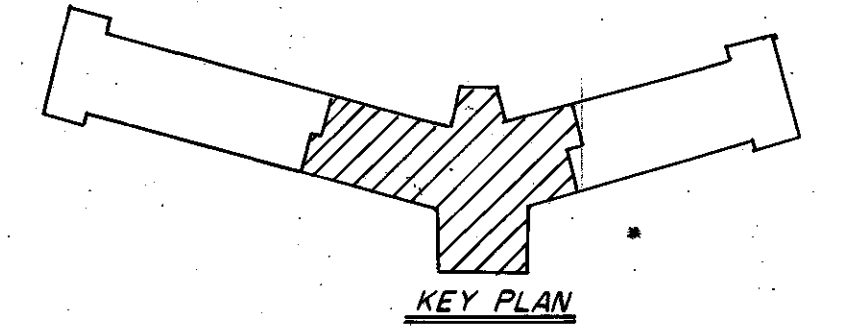
SUBSCRIBED AND SWORN BEFORE ME, A NOTARY PUBLIC THIS _____ DAY OF _____ 19____

STATE OF MINNESOTA
COUNTY OF _____

MY COMMISSION EXPIRES _____

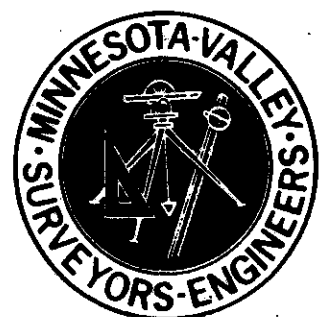


APARTMENT OWNERSHIP NO. 130 FOUNTAIN LAKE, A CONDOMINIUM

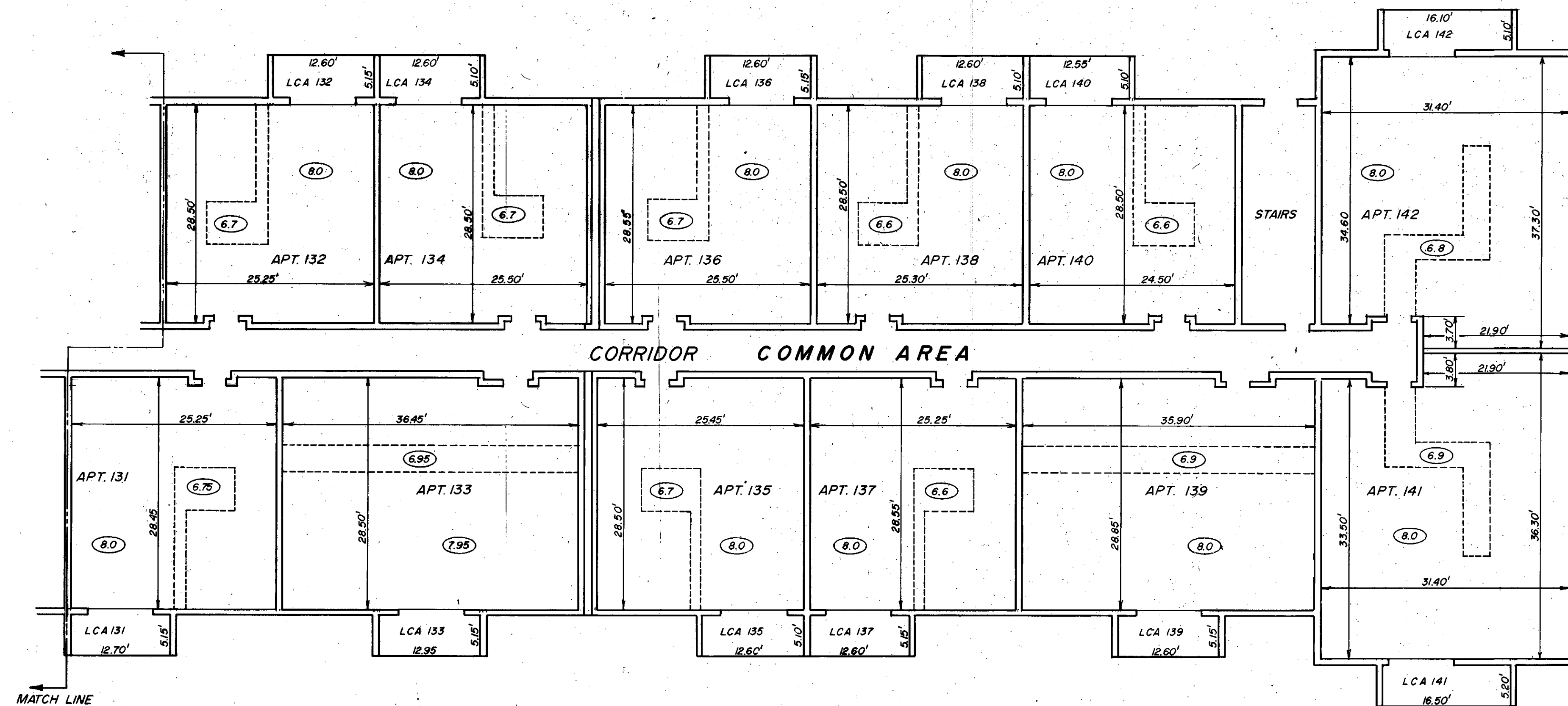
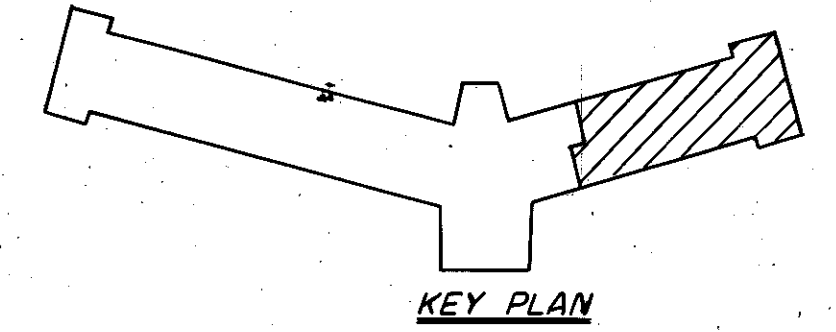


FIRST FLOOR
1" = 10'

(8.0) DENOTES CEILING HEIGHT, DASHED LINE INDICATES CHANGE IN CEILING HEIGHT.
S DENOTES LIMITED COMMON AREA — STORAGE
LCA DENOTES LIMITED COMMON AREA, BALCONY

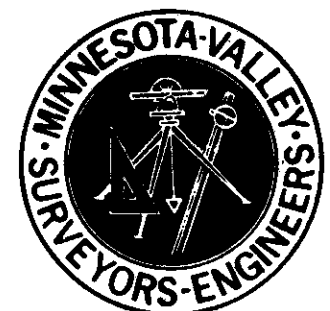


APARTMENT OWNERSHIP NO. 130 FOUNTAIN LAKE, A CONDOMINIUM

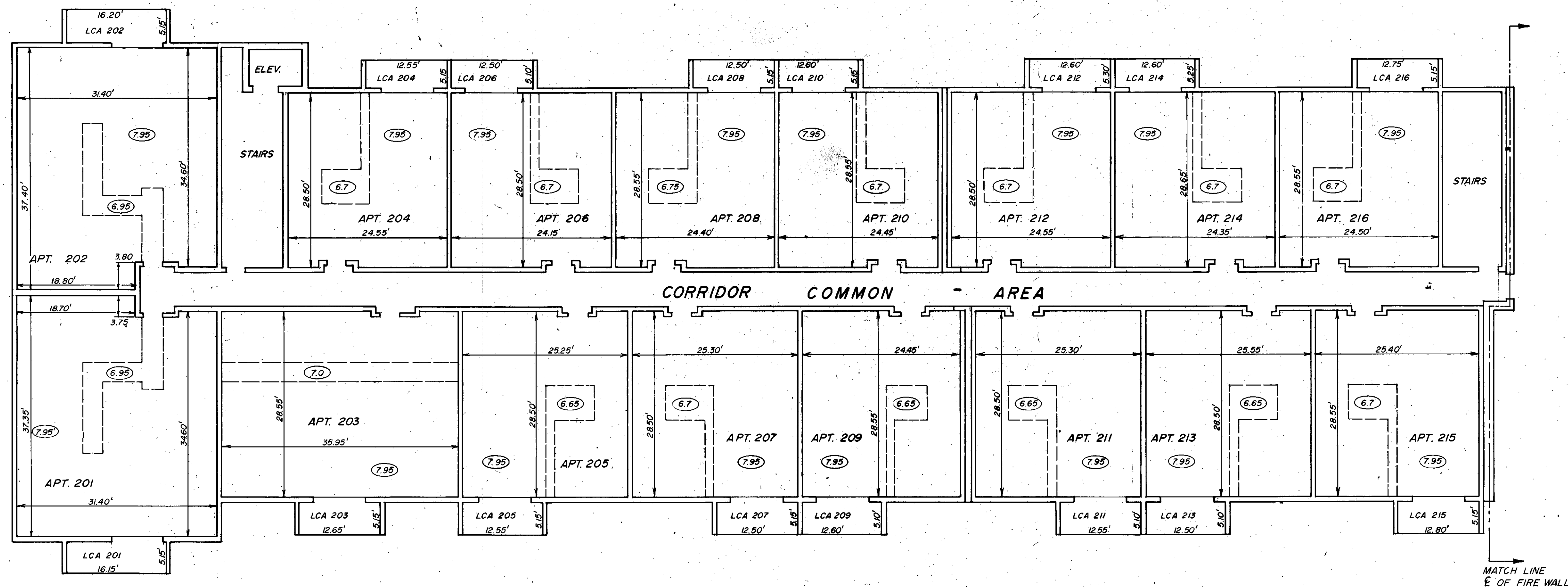
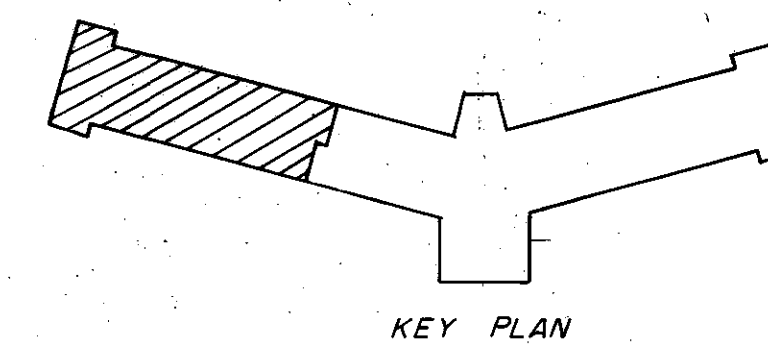


⊙ 8.0 DENOTES CEILING HEIGHT, DASHED LINE INDICATES CHANGE IN CEILING HEIGHT
LCA DENOTES LIMITED COMMON AREA, BALCONY

FIRST FLOOR
1" = 10'



APARTMENT OWNERSHIP NO. 130 FOUNTAIN LAKE, A CONDOMINIUM

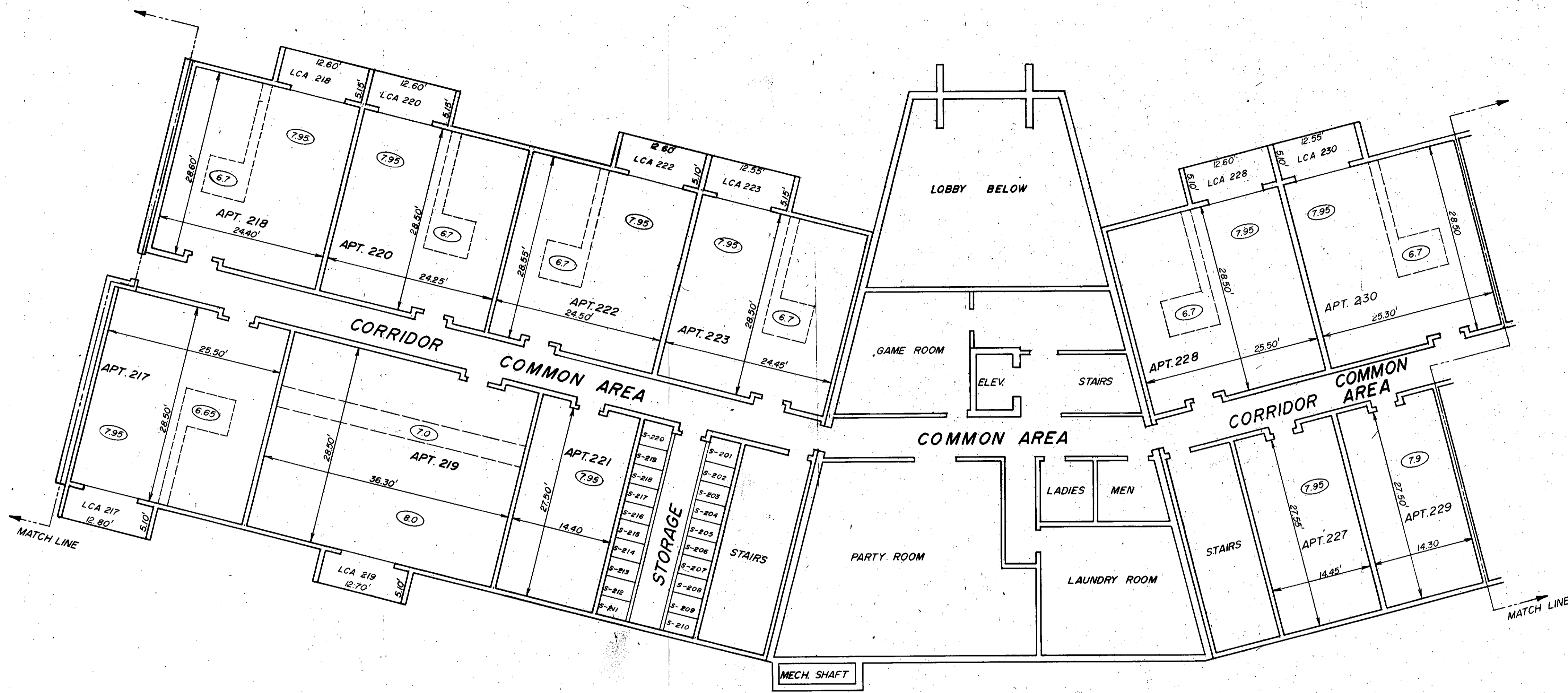
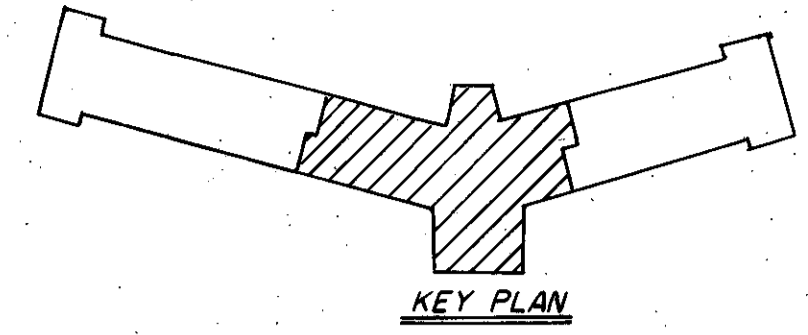


(8.0) DENOTES CEILING HEIGHT, DASHED LINE INDICATES CHANGE IN CEILING HEIGHT.
LCA DENOTES LIMITED COMMON AREA, BALCONY

SECOND FLOOR
1" = 10'



APARTMENT OWNERSHIP NO. 130 FOUNTAIN LAKE, A CONDOMINIUM

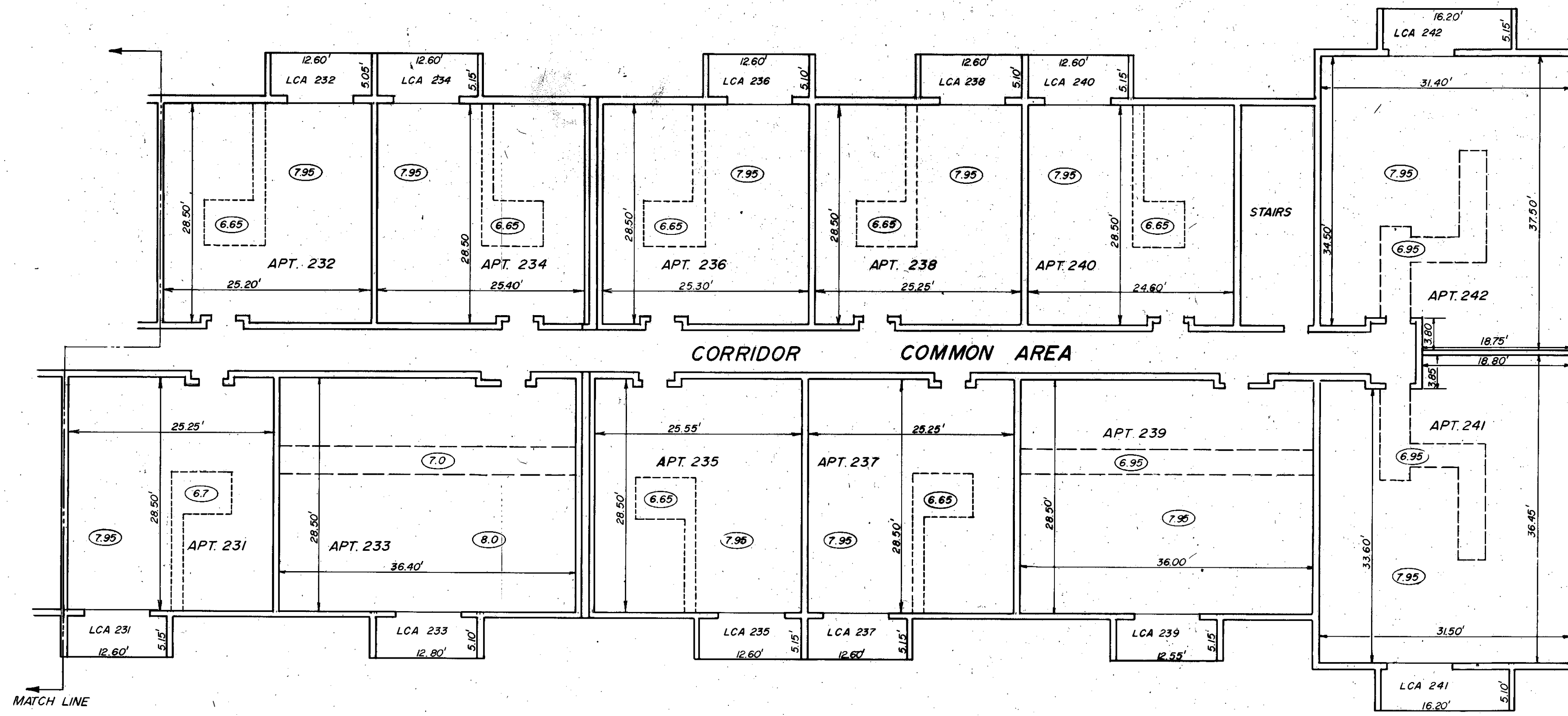
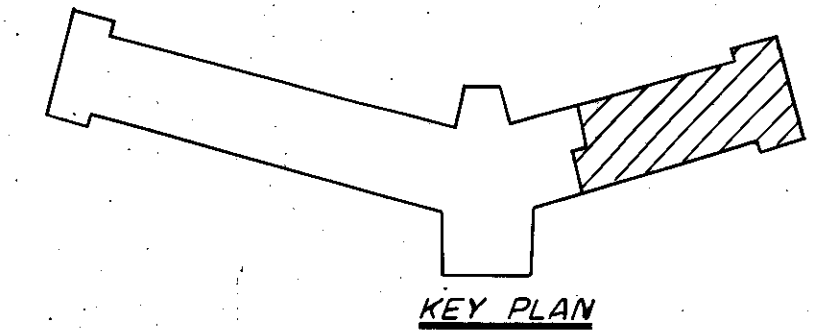


SECOND FLOOR
1" = 10'

(8.0) DENOTES CEILING HEIGHT, DASHED LINE INDICATES CHANGE IN CEILING HEIGHT.
S DENOTES LIMITED COMMON AREA — STORAGE
LCA DENOTES LIMITED COMMON AREA, BALCONY



APARTMENT OWNERSHIP NO. 130 FOUNTAIN LAKE, A CONDOMINIUM

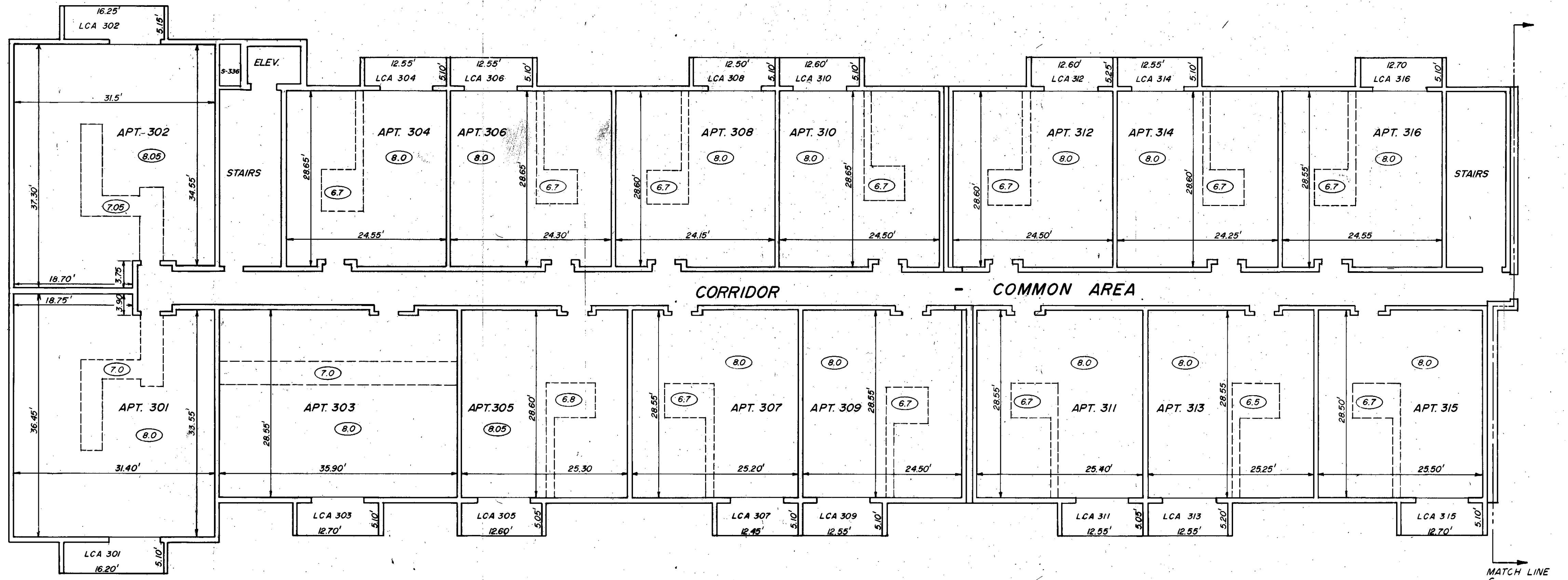
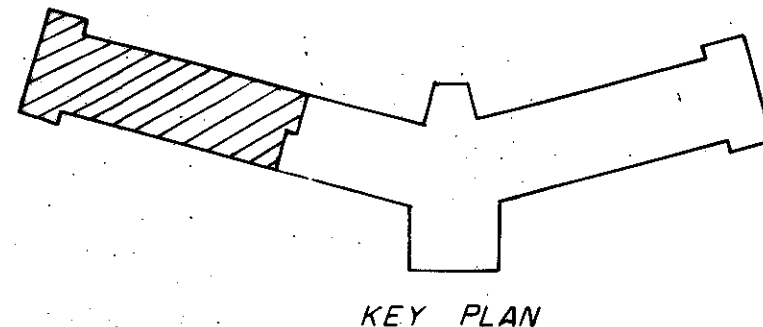


8.0 DENOTES CEILING HEIGHT, DASHED LINE INDICATES CHANGE IN CEILING HEIGHT.
 LCA DENOTES LIMITED COMMON AREA, BALCONY

SECOND FLOOR
 1" = 10'

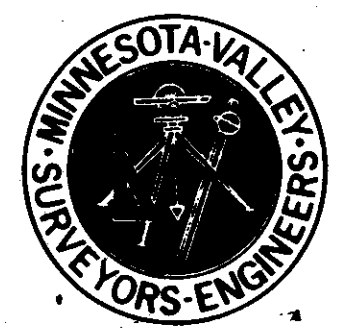


APARTMENT OWNERSHIP NO. 130 FOUNTAIN LAKE, A CONDOMINIUM

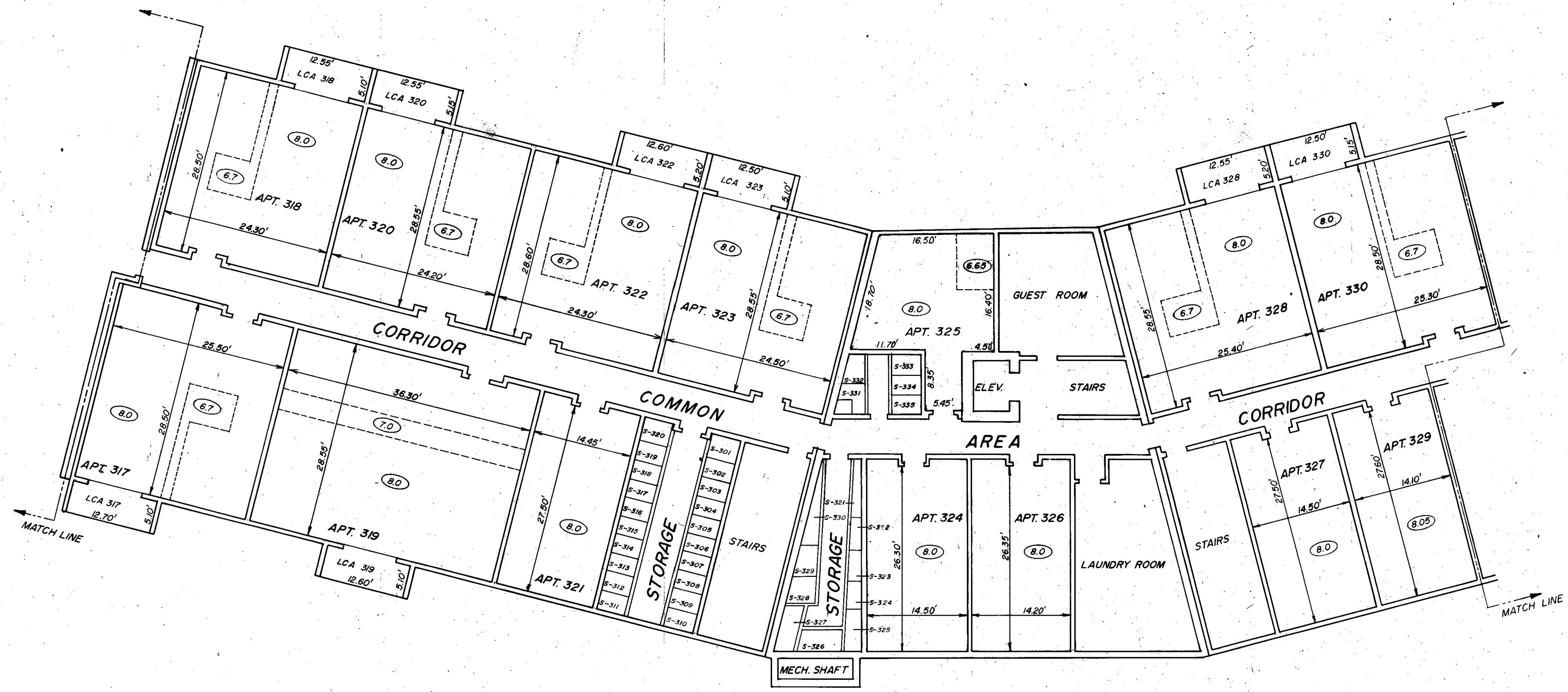
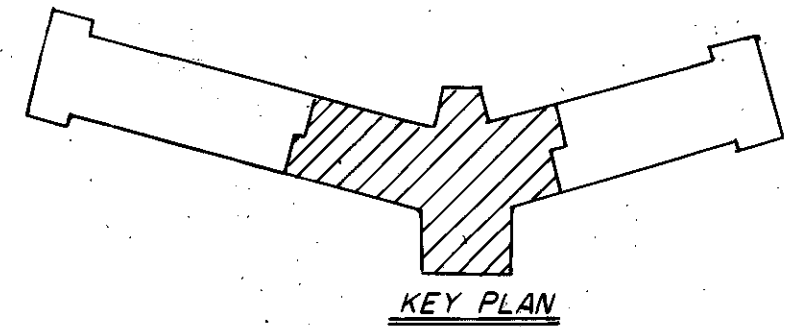


(8.0) DENOTES CEILING HEIGHT, DASHED LINE INDICATE CHANGE IN CEILING HEIGHT.
 S DENOTES LIMITED COMMON AREA — STORAGE
 LCA DENOTES LIMITED COMMON AREA, BALCONY

THIRD FLOOR
1" = 10'

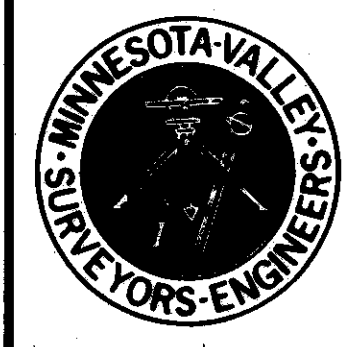


APARTMENT OWNERSHIP NO. 130 FOUNTAIN LAKE, A CONDOMINIUM

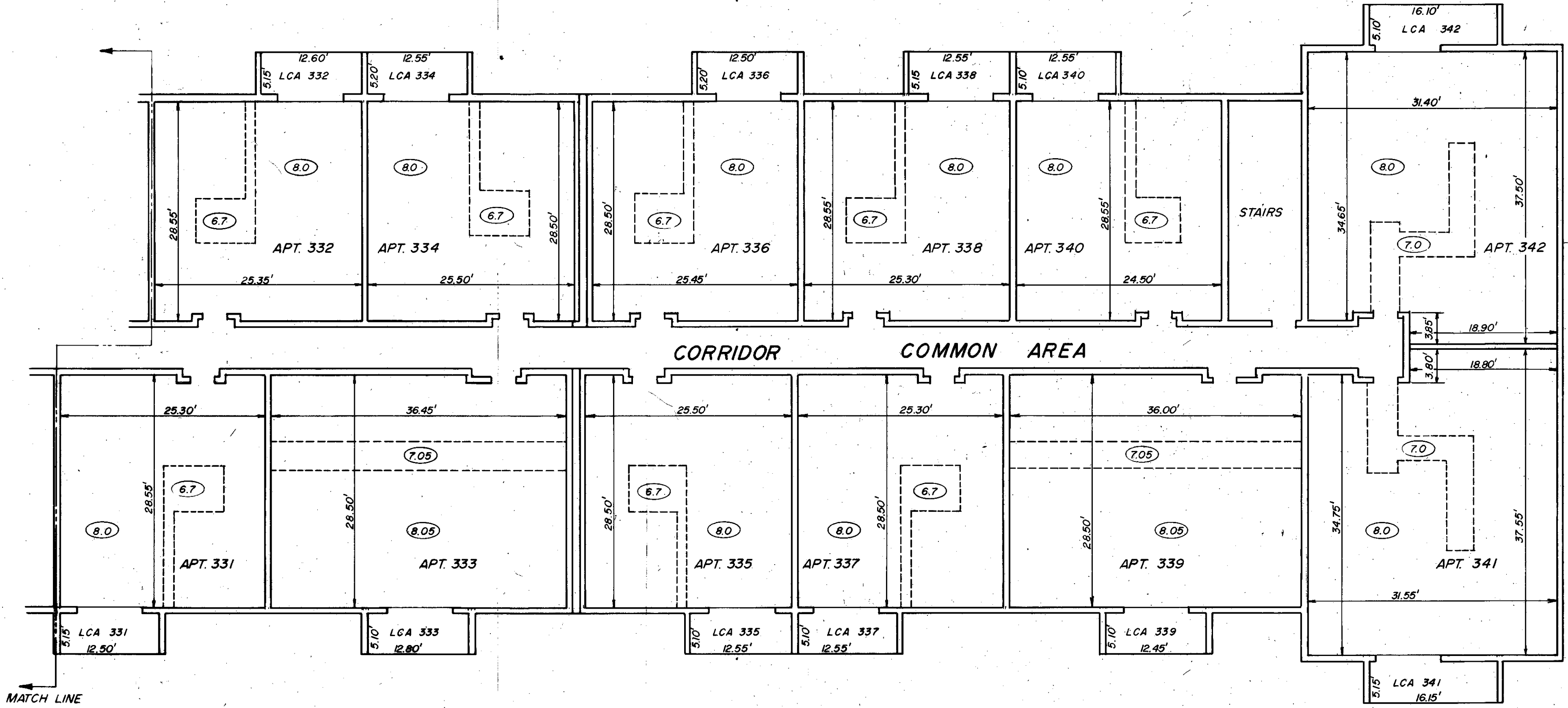
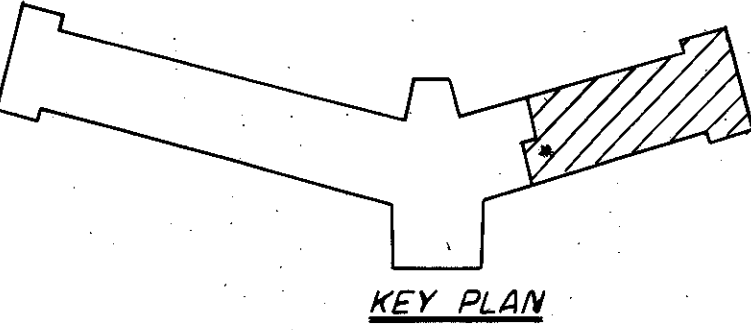


(8.0) DENOTES CEILING HEIGHT, DASHED LINE INDICATES CHANGE IN CEILING HEIGHT
 S DENOTES LIMITED COMMON AREA—STORAGE
 LCA DENOTES LIMITED COMMON AREA, BALCONY

THIRD FLOOR
 1" = 10'



APARTMENT OWNERSHIP NO. 130 FOUNTAIN LAKE, A CONDOMINIUM



(8.0) DENOTES CEILING HEIGHT, DASHED LINE INDICATE CHANGE IN CEILING HEIGHT.
LCA DENOTES LIMITED COMMON AREA, BALCONY

THIRD FLOOR
1" = 10'

