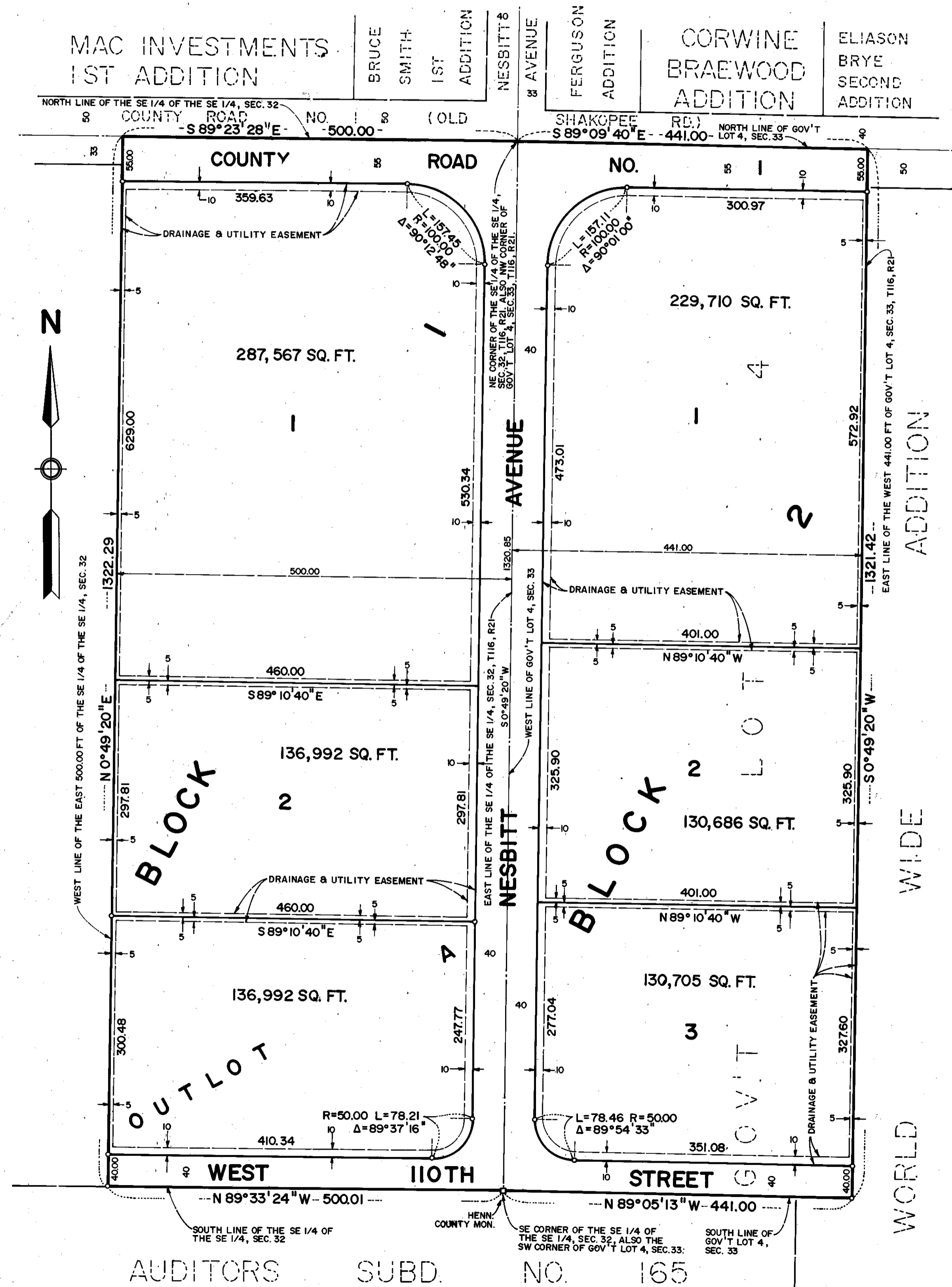


CDR 1ST ADDITION

R.T. DOC. NO. _____
C.R. DOC. NO. _____



KNOW ALL MEN BY THESE PRESENTS: That CDR INVESTMENTS/MINNESOTA, a Texas General Partnership, owners and proprietors, and MWF MORTGAGE CORPORATION, a Minnesota Corporation, mortgagee, of the following described property situated in the County of Hennepin, State of Minnesota to-wit:

The West 441.00 feet of Government Lot 4, Section 33, Township 116, Range 21, Hennepin County, Minnesota

AND

The East 500.00 feet of the Southeast Quarter of the Southeast Quarter of Section 32, Township 116, Range 21, Hennepin County, Minnesota

Have caused the same to be surveyed and platted as CDR 1ST ADDITION and do hereby donate and dedicate to the public, for public use forever, the avenue, road, street, and drainage and utility easements as shown on said plat.

In witness whereof said CDR INVESTMENTS/MINNESOTA, a Texas General Partnership, has caused these presents to be signed by Fred Bolstad, Partner, on behalf of said partnership, this 6 day of NOVEMBER, 1985.

CDR INVESTMENTS/MINNESOTA

SIGNED: Fred Bolstad
Fred Bolstad, Partner

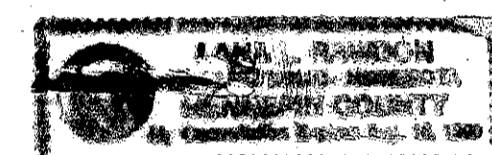
And in witness whereof said MWF MORTGAGE CORPORATION, a Minnesota Corporation, has caused these presents to be signed by its proper officers and its corporate seal to be hereunto affixed this 6 day of NOVEMBER, 1985.

MWF MORTGAGE CORPORATION

SIGNED: Norman D. Herbet its Exec Vice Pres Arthur W. Davis, Jr. its Vice President

STATE OF MINN.
COUNTY OF HENNEPIN

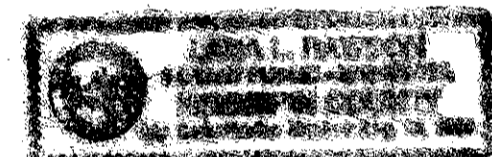
The foregoing instrument was acknowledged before me this 6 day of November, 1985 by Fred Bolstad, Partner of said CDR INVESTMENTS/MINNESOTA, a Texas General Partnership, on behalf of said partnership.



Lane L. Rawson
Notary Public, Hennepin County, Minnesota
My Commission Expires August 16, 1990

STATE OF MINNESOTA
COUNTY OF HENNEPIN

The foregoing instrument was acknowledged before me this 6 day of November, 1985 by Norman D. Herbet its Exec. Vice Pres. and Arthur W. Davis, Jr. its Vice President of said MWF MORTGAGE CORPORATION, a Minnesota Corporation, on behalf of said corporation.



Lane L. Rawson
Notary Public, Hennepin County, Minnesota
My Commission Expires August 16, 1990

I hereby certify that I have surveyed and platted the property described on this plat as CDR 1ST ADDITION; that this plat is a correct representation of said survey; that all distances are correctly shown in feet and hundredths of a foot; that all monuments have been correctly placed in the ground as shown; that the outside boundary lines are correctly designated; and that there are no wetlands to be designated on said plat.

Edward H. Sunde
Edward H. Sunde, Land Surveyor
Minnesota License No. 8612

STATE OF MINNESOTA
COUNTY OF HENNEPIN

The foregoing surveyor's certificate was acknowledged before me this 6th day of NOVEMBER, 1985 by Edward H. Sunde, Land Surveyor.



John K. Barnes
Notary Public, HENNEPIN County, Minnesota
My Commission Expires SEPTEMBER 26, 1991

BLOOMINGTON, MINNESOTA

This plat of CDR 1ST ADDITION was approved and accepted by the City Council of the City of Bloomington, Minnesota at a regular meeting thereof, held this day of , 198 . If applicable, the written comments and recommendations of the Commissioner of Transportation and the County Highway Engineer have been received by the City or the prescribed 30 day period has elapsed without receipt of such comments and recommendations, as provided by Minn. Statutes, Section 505.03, Subd. 2.

CITY COUNCIL OF BLOOMINGTON, MINNESOTA

BY: _____ its Mayor BY: _____ its Manager

PROPERTY TAX AND PUBLIC RECORDS DEPARTMENT, Hennepin County, Minnesota

I hereby certify that taxes payable in 19 and prior years have been paid for land described on this plat. Dated this day of , 198 .

Dale G. Folstad, Hennepin County Auditor BY: _____ Deputy

SURVEY DIVISION, Hennepin County, Minnesota

Pursuant to Chapter 810, Minnesota Laws of 1969, this plat has been approved this day of , 198 .

Robert L. Bakka, Hennepin County Surveyor BY: _____

COUNTY RECORDER, Hennepin County, Minnesota

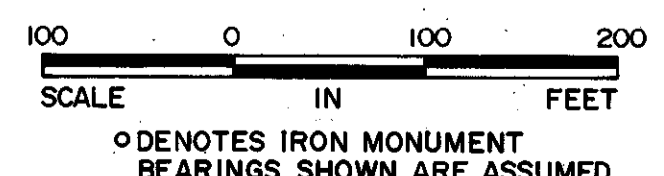
I hereby certify that the within plat of CDR 1ST ADDITION was filed for record in this office this day of , 198 at o'clock M.

R. Dan Carlson, County Recorder BY: _____ Deputy

REGISTRAR OF TITLES, Hennepin County, Minnesota

I hereby certify that the within plat of CDR 1ST ADDITION was filed for record in this office this day of , 198 at o'clock M.

R. Dan Carlson, Registrar of Titles BY: _____ Deputy



Sunde Land Surveying Inc.