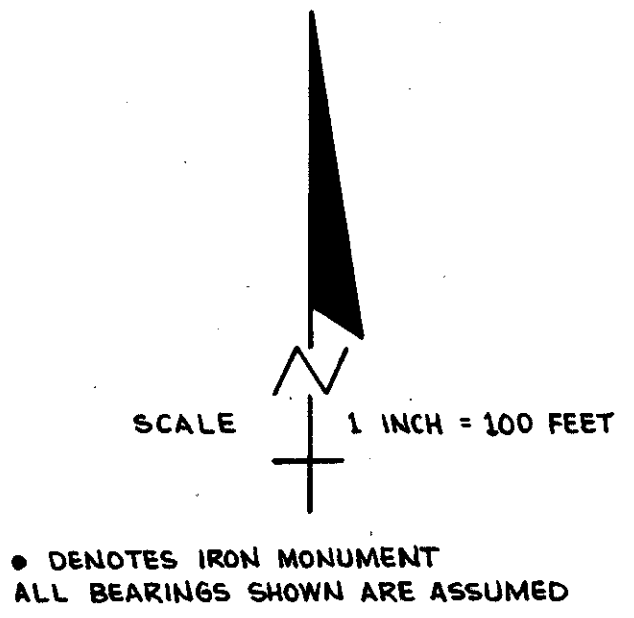
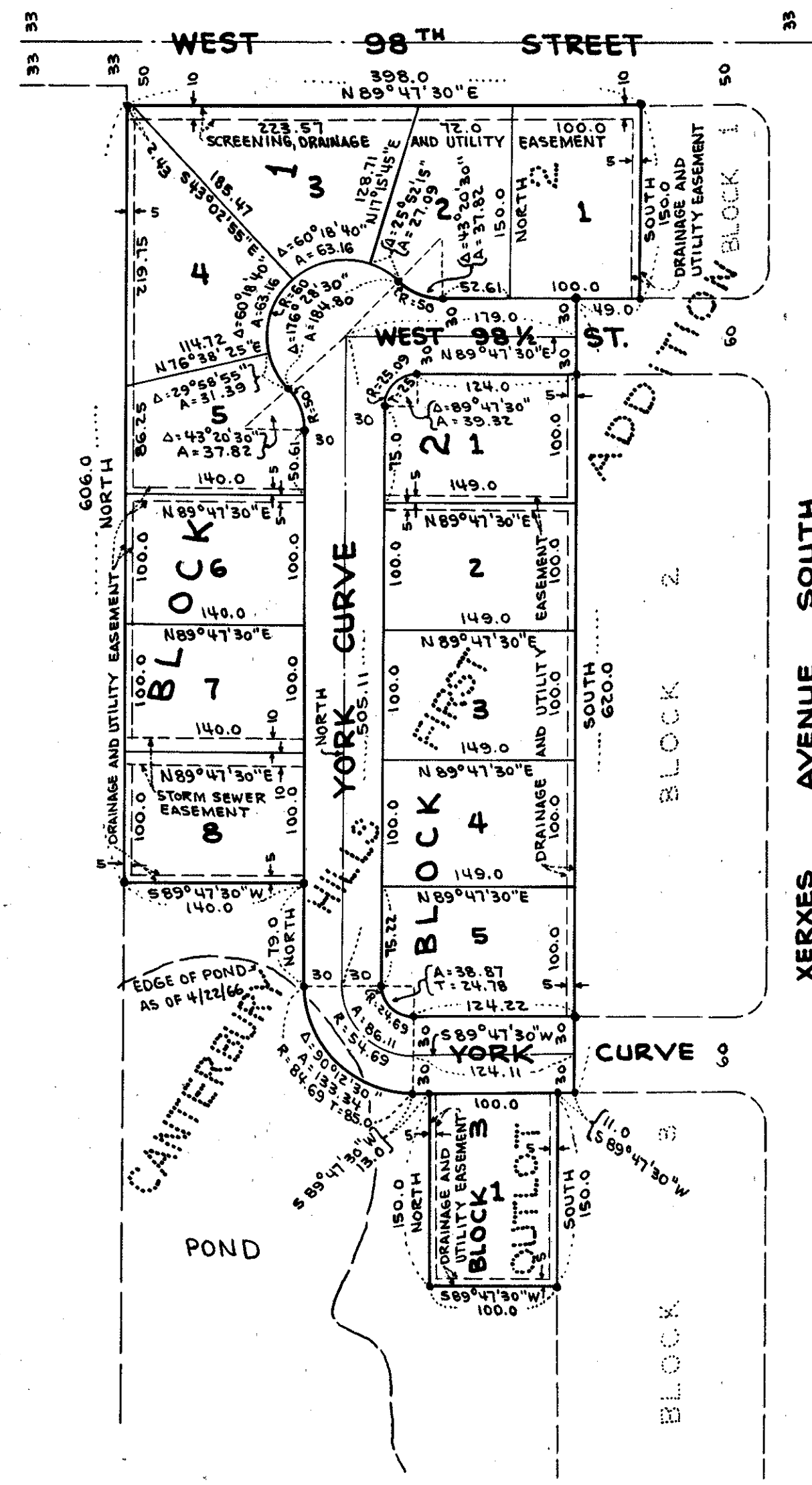


CANTERBURY HILLS SECOND ADDITION

C. E. COULTER & ASSOCIATES, INC.
LAND SURVEYORS



KNOW ALL MEN BY THESE PRESENTS: That Bar-Mar Builders, Inc., a Minnesota Corporation, owner and proprietor of the following described property situated in the County of Hennepin, State of Minnesota, to wit: Outlot 2, CANTERBURY HILLS FIRST ADDITION, has caused the same to be surveyed and platted as CANTERBURY HILLS SECOND ADDITION, and does hereby donate and dedicate to the public for the public use forever the street and curve as shown on the annexed plat, also subject to the storm sewer easement, the screening, drainage and utility easement and the drainage and utility easements as shown on the annexed plat. In witness whereof said Bar-Mar Builders, Inc., the above mentioned corporation has caused these presents to be signed by its proper officers and its corporate seal to be hereunto affixed on this 28th day of March 1967 A.D.

In the presence of:
Melvin E. Anderson) As to Kenneth C. Young
Margaret K. Fosse)
Melvin E. Anderson) As to Walter C. Nelson
Margaret K. Fosse)

Signed: Bar-Mar Builders, Inc.
Kenneth C. Young
 Kenneth C. Young President
Walter C. Nelson
 Walter C. Nelson Vice President

STATE OF MINNESOTA)
 COUNTY OF HENNEPIN) SS
 On this 28th day of March 1967 A.D., before me a Notary Public, within and for said County and State, personally appeared Kenneth C. Young and Walter C. Nelson, to me personally known, who being by me duly sworn, did say that they are respectively President and Vice President of Bar-Mar Builders, Inc., the corporation named in the foregoing instrument and that the seal affixed to said instrument is the corporate seal of said corporation, and that said instrument was signed and sealed in behalf of said corporation by authority of its Board of Directors, and said Kenneth C. Young and Walter C. Nelson acknowledge said instrument to be the free act and deed of said corporation.

Walter D. Jensen
 Notary Public, Hennepin County, Minnesota
 My Commission Expires 3-24-1971

I hereby certify that I have surveyed and platted the land described in the foregoing dedication as CANTERBURY HILLS SECOND ADDITION, that this plat is a correct representation of said survey, that all distances are correctly shown on said plat in figures denoting feet and decimals of a foot, that the monuments for the guidance of future surveys have been correctly placed in the ground as shown on the annexed plat, that the outside boundaries of the land are correctly designated on said plat and that there are no wet lands or public highways to be designated on said plat other than as shown thereon.

Signed John A. Peterson
 Registered Land Surveyor, Minnesota Registration No. 6267

STATE OF MINNESOTA)
 COUNTY OF HENNEPIN) SS
 The above certificate subscribed and sworn to before me a Notary Public, within and for said County and State, on this 23rd day of March 1967 A.D.

Frank R. Lim Jr.
 Notary Public, Hennepin County, Minnesota
 My Commission Expires July 13, 1972

The boundaries of this plat and the boundaries of the blocks therein have been mathematically checked and approved. No determination has been made to ascertain that the legal description agrees with said plat. Dated this _____ day of _____ 1967 A.D.

By Elmer J. Peterson, Hennepin County Surveyor

The annexed plat was approved and accepted by the City Council of the City of Bloomington, Minnesota, at a regular meeting thereof held this _____ day of _____ 1967 A.D.

City Council, City of Bloomington, Minnesota
 By _____ Mayor
 By _____ Manager