

# CANTERBURY HILLS FOURTH ADDITION

C. E. COULTER & ASSOCIATES, INC.  
LAND SURVEYORS

KNOW ALL MEN BY THESE PRESENTS: That Bar-Mar Builders, Inc., a Minnesota corporation, owner and proprietor of the following described property situated in the County of Hennepin, State of Minnesota, to wit: Outlot B, CANTERBURY HILLS THIRD ADDITION, according to the plat thereof on file and of record in the office of the Registrar of Titles, County of Hennepin. Has caused the same to be surveyed and platted as CANTERBURY HILLS FOURTH ADDITION, and does hereby donate and dedicate to the public for the public use forever the road as shown on this plat, also subject to the utility easement and drainage and utility easements as shown on this plat. In witness whereof said Bar-Mar Builders, Inc., the above mentioned corporation has caused these presents to be signed by its proper officers and its corporate seal to be hereunto affixed this 16TH day of MAY 1968 A.D.

In the presence of:  
Melrose B. Dupeloff As to Walter C. Nelson  
Thomas M. Tautge  
Melrose B. Dupeloff As to Jeanette Olson  
Thomas M. Tautge

Signed: Bar-Mar Builders, Inc.  
Walter C. Nelson  
Walter C. Nelson Vice President  
Jeanette Olson  
Jeanette Olson Secretary-Treasurer

STATE OF MINNESOTA) )  
COUNTY OF HENNEPIN) SS  
On this 16TH day of MAY 1968 A.D., before me a Notary Public, within and for said County and State, personally appeared Walter C. Nelson and Jeanette Olson, to me personally known, who being by me duly sworn, did say that they are respectively Vice President and Secretary-Treasurer of Bar-Mar Builders, Inc., the corporation named in the foregoing instrument and that the seal affixed to said instrument is the corporate seal of said corporation, and that said instrument was signed and sealed in behalf of said corporation by authority of its board of directors, and said Walter C. Nelson and Jeanette Olson acknowledge said instrument to be the free act and deed of said corporation.

Edna Sundberg EDNA SUNDBERG  
Notary Public, Hennepin County, Minnesota  
My Commission Expires AUGUST 18, 1971

I hereby certify that I have surveyed and platted the land described on this plat as CANTERBURY HILLS FOURTH ADDITION, that this plat is a correct representation of said survey, that all distances are correctly shown on said plat in figures denoting feet and decimals of a foot, that all monuments have been correctly placed in the ground as shown on this plat, that the outside boundaries of the land are correctly designated on said plat and that there are no wet lands or public highways to be designated on said plat other than as shown thereon.

Signed John A. Peterson  
Registered Land Surveyor, Minnesota Registration No. 6267

STATE OF MINNESOTA) )  
COUNTY OF HENNEPIN) SS  
The above certificate subscribed and sworn to before me a Notary Public, within and for said County and State, on this 16TH day of MAY 1968 A.D.

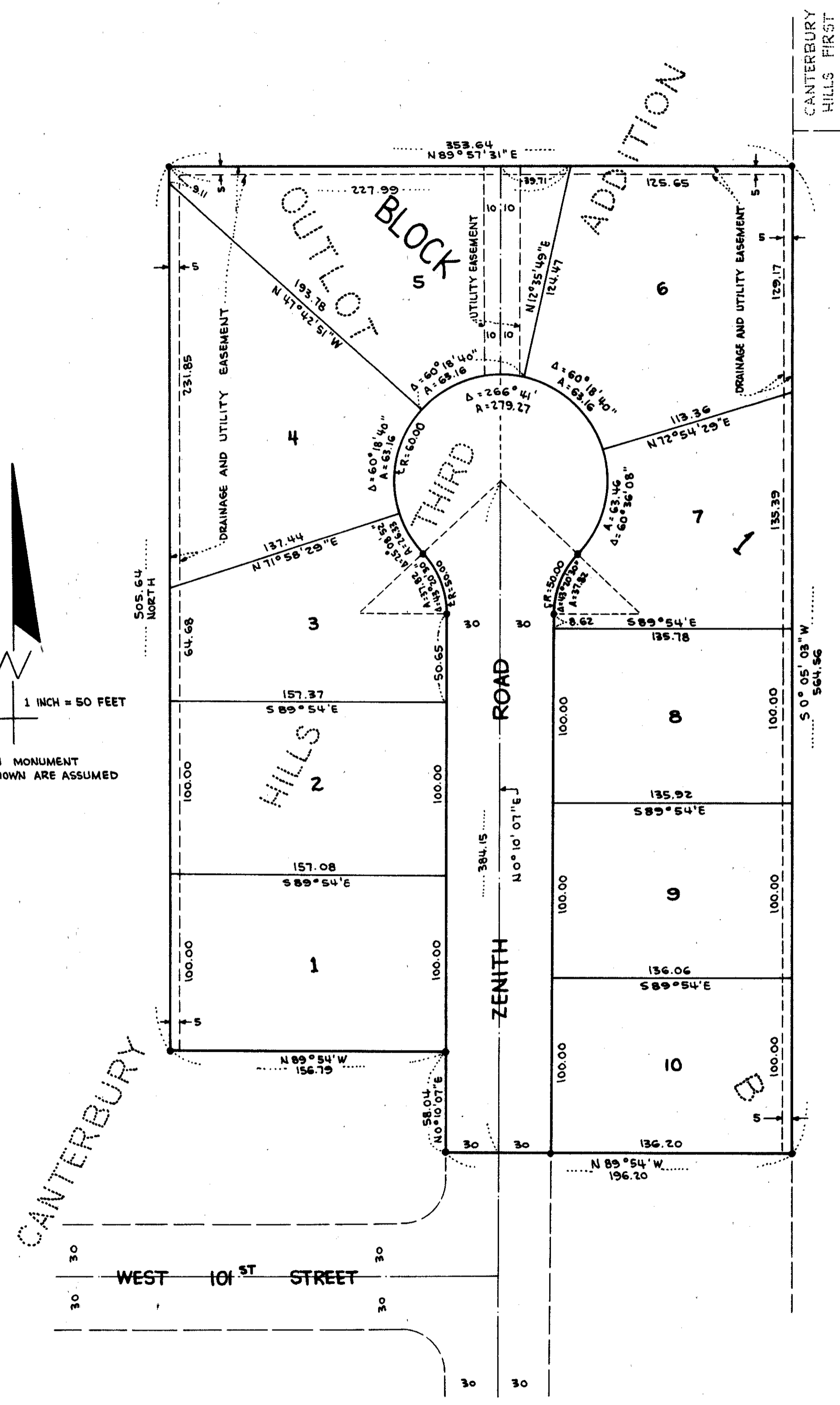
Frank R. Lenz Jr. FRANK R. LENZ JR.  
Notary Public, Hennepin County, Minnesota  
My Commission Expires JULY 13, 1972

The boundaries of this plat and the boundaries of the block therein have been mathematically checked and approved. No determination has been made to ascertain that the legal description agrees with said plat. Dated this \_\_\_\_\_ day of \_\_\_\_\_ 1968 A.D.

By \_\_\_\_\_  
Elmer J. Peterson, Hennepin County Surveyor

This plat was approved and accepted by the City Council of the City of Bloomington, Minnesota, at a regular meeting thereof held this \_\_\_\_\_ day of \_\_\_\_\_ 1968 A.D.

City Council, City of Bloomington, Minnesota  
By \_\_\_\_\_ Mayor  
By \_\_\_\_\_ Manager



SCALE: 1 INCH = 50 FEET  
• DENOTES IRON MONUMENT  
ALL BEARINGS SHOWN ARE ASSUMED