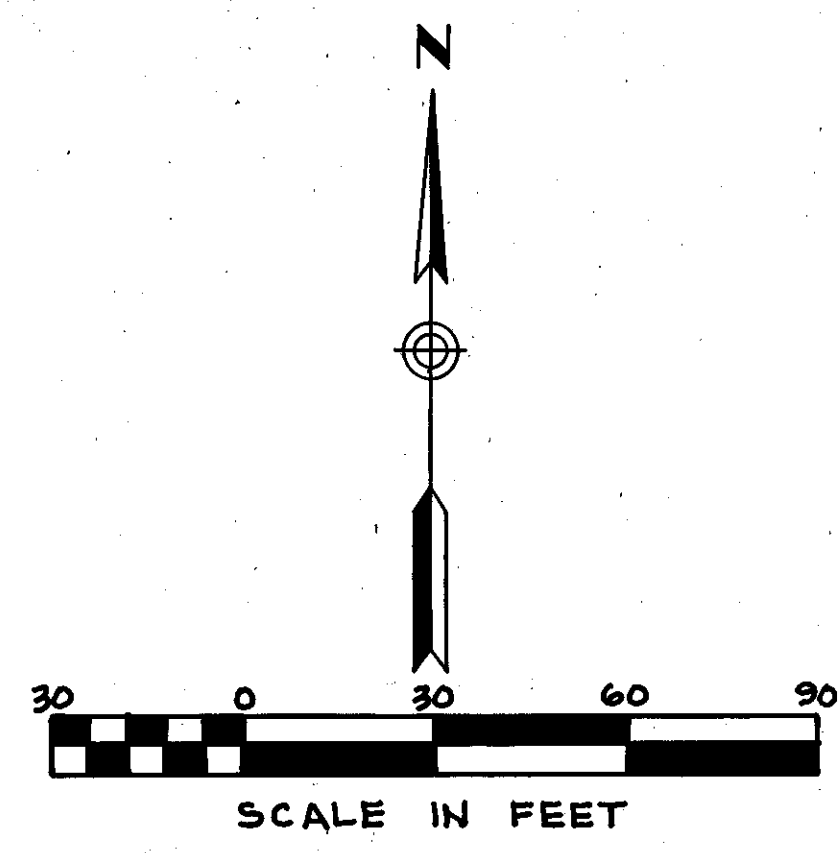


# BURCKHARDT ADDITION

C. R. DOC. NO. \_\_\_\_\_



KNOW ALL MEN BY THESE PRESENTS: That Portfolio Development Inc., a Minnesota corporation, fee owner; and SCHERER BROS. FINANCIAL SERVICES, CO., a Minnesota corporation, mortgagee of the following described property situated in the County of Hennepin, State of Minnesota, to wit:

Lot 1, Block 1, SEAN WAKELY 1 ST ADDITION, according to the recorded plat thereof.

Have caused the same to be surveyed and platted as BURCKHARDT ADDITION and do hereby dedicate to the public for public use forever the easements for drainage and utility purposes as shown on this plat.

In witness whereof said Portfolio Development Inc., a Minnesota corporation, has caused these presents to be signed by its proper officer this 11 day of Sept, 1997 PORTFOLIO DEVELOPMENT INC.

*Curtis E. Burckhardt*  
Curtis E. Burckhardt, President

STATE OF MINNESOTA  
COUNTY OF Hennepin  
The foregoing instrument was acknowledged before me this 11<sup>th</sup> day of September, 1997 by Curtis E. Burckhardt, President of Portfolio Development Inc., a Minnesota corporation, on behalf of the corporation.

*Patricia A. Shall*  
Notary Public, Hennepin County, Minnesota  
My Commission Expires January 31, 2000

In witness whereof said SCHERER BROS. FINANCIAL SERVICES, CO., a Minnesota corporation, has caused these presents to be signed by its proper officer this 11 day of Sept, 1997 SCHERER BROS. FINANCIAL SERVICES, CO.

*H.P.S.*  
its Att

STATE OF MINNESOTA  
COUNTY OF Anoka  
The foregoing instrument was acknowledged before me this 11 day of September, 1997 by Thomas P. Olson, President, of SCHERER BROS. FINANCIAL SERVICES, CO., a Minnesota corporation, on behalf of the corporation.

*Collin M. Brueck*  
Notary Public, Anoka County, Minnesota  
My Commission Expires 1/1/2000

I hereby certify that I have surveyed and platted the property described on this plat as BURCKHARDT ADDITION; that this plat is a correct representation of said survey; that all distances are correctly shown in feet and hundredths of a foot; that all monuments have been correctly placed in the ground as shown on said plat; that the outside boundary lines are correctly designated on said plat; and that there are no wetlands as defined in MS 505.02. Subd. 1 or public highways to be designated on said plat.

*LeRoy H. Bohlen*  
LeRoy H. Bohlen, Land Surveyor  
Minnesota License Number 10795

STATE OF MINNESOTA  
COUNTY OF Hennepin  
The foregoing surveyor's certificate was acknowledged before me this 11<sup>th</sup> day of September, 1997 by LeRoy H. Bohlen, Land Surveyor.

*Patricia A. Shall*  
Notary Public, Hennepin County, Minnesota  
My Commission Expires January 31, 2000

BLOOMINGTON, MINNESOTA  
This plat of BURCKHARDT ADDITION was approved and accepted by the City Council of Bloomington, Minnesota at a regular meeting thereof held on this \_\_\_ day of \_\_\_\_\_, 19\_\_\_. If applicable the written comments and recommendations of the Commissioner of Transportation, and the County Highway Engineer, have been received by the city or the prescribed 30 day period has elapsed without receipt of such comments and recommendations as provided by Minnesota Statutes, Section 505.03 Subdivision 2.  
CITY COUNCIL OF BLOOMINGTON, MINNESOTA

By: \_\_\_\_\_, Mayor By: \_\_\_\_\_, Manager

TAXPAYER SERVICES DIVISION, HENNEPIN COUNTY, MINNESOTA  
I hereby certify that taxes payable in 19\_\_ and prior years have been paid in full for all land described on this plat.  
Dated this \_\_\_ day of \_\_\_\_\_, 19\_\_\_.  
Patrick H. O'Connor, Hennepin County Auditor

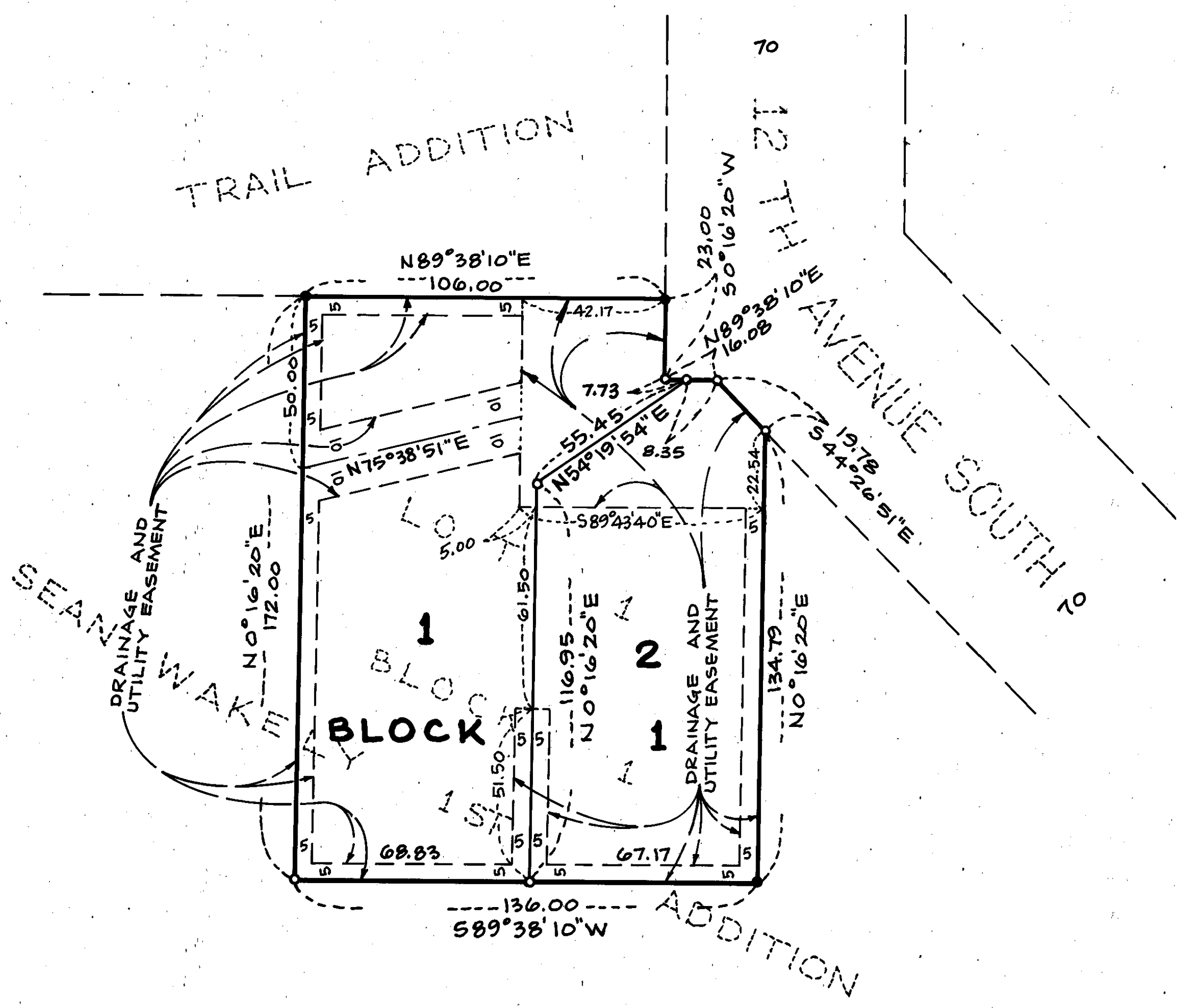
By: \_\_\_\_\_, Deputy

SURVEY SECTION, HENNEPIN COUNTY, MINNESOTA  
Pursuant to Minnesota Statutes, Sec. 383B.565 (1969) this plat has been approved this \_\_\_ day of \_\_\_\_\_, 19\_\_\_.  
Gary F. Caswell, Hennepin County Surveyor

By: \_\_\_\_\_

COUNTY RECORDER, HENNEPIN COUNTY, MINNESOTA  
I hereby certify that the within plat of BURCKHARDT ADDITION was filed for record in this office this \_\_\_ day of \_\_\_\_\_, 19\_\_, at \_\_\_ o'clock \_\_\_ M.  
R. Dan Carlson, Hennepin County Recorder

By: \_\_\_\_\_, Deputy



● DENOTES IRON MONUMENT FOUND  
○ DENOTES IRON MONUMENT SET  
BEARINGS SHOWN ARE BASED UPON AN ASSUMED DATUM.