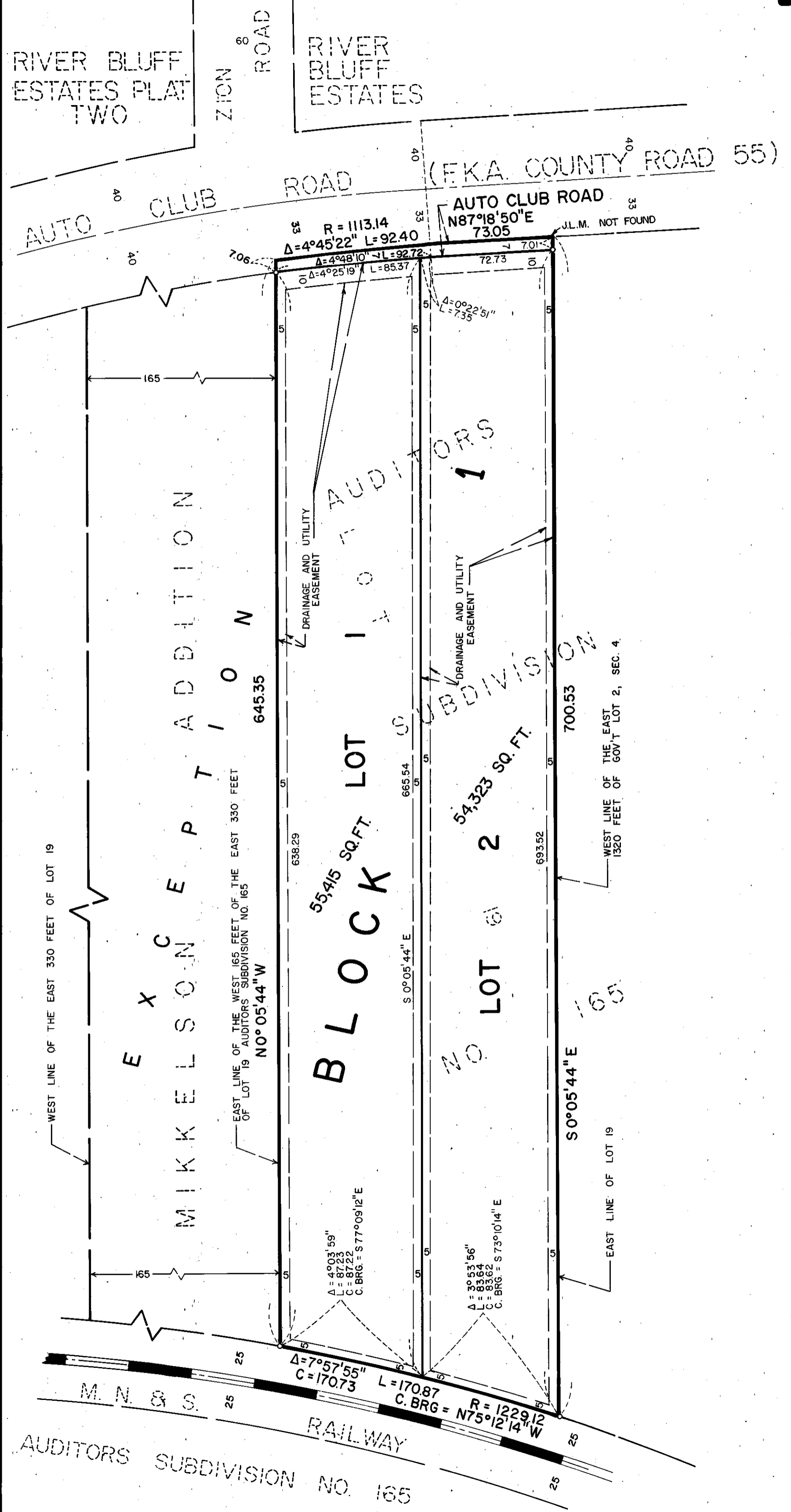


BLAYLOCK 2ND ADDITION

R.T. DOC. NO. _____



KNOW ALL MEN BY THESE PRESENTS: That Earl L. Blaylock and Lorraine L. Blaylock, husband and wife, owners and proprietors of the following described property situated in the County of Hennepin, State of Minnesota, to wit:

East 330 feet of Lot 19, except the West 165 feet thereof, Auditor's Subdivision Number 165, Hennepin County, Minnesota, according to the plat thereof on file or of record in the office of the County Recorder in and for said County.

Have caused the same to be surveyed and platted as BLAYLOCK 2ND ADDITION and do hereby donate and dedicate to the public, for public use forever the road and drainage and utility easements as shown on said plat.

In witness whereof said Earl L. Blaylock, and Lorraine L. Blaylock, husband and wife, have set their hands and seals this 24th day of FEBRUARY, 1983.

SIGNED: Earl L. Blaylock and Lorraine L. Blaylock

STATE OF MINNESOTA
COUNTY OF HENNEPIN

The foregoing instrument was acknowledged before me this 24th day of FEBRUARY, 1983 by Earl L. Blaylock and Lorraine L. Blaylock, husband and wife.

JOHN K. BARNES
NOTARY PUBLIC - MINNESOTA
HENNEPIN COUNTY
My commission expires Sept. 18, 1985

John K. Barnes
Notary Public, HENNEPIN County, Minnesota
My Commission Expires SEPTEMBER 18, 1985

I hereby certify that I have surveyed and platted the property described on this plat as BLAYLOCK 2ND ADDITION; that this plat is a correct representation of said survey; that all distances are correctly shown in feet and hundredths of a foot; that all monuments have been correctly placed in the ground as shown; that the outside boundary lines are correctly designated; and that there are no wetlands to be designated on said plat.

Edward H. Sunde
Edward H. Sunde, Land Surveyor
Minnesota License No. 8612

STATE OF MINNESOTA
COUNTY OF HENNEPIN

The foregoing surveyor's certificate was acknowledged before me this 23rd day of FEBRUARY, 1983 by Edward H. Sunde, Land Surveyor.

JOHN K. BARNES
NOTARY PUBLIC - MINNESOTA
HENNEPIN COUNTY
My commission expires Sept. 18, 1985

John K. Barnes
Notary Public, HENNEPIN County, Minnesota
My Commission Expires SEPTEMBER 18, 1985

BLOOMINGTON, MINNESOTA

The plat of BLAYLOCK 2ND ADDITION was approved and accepted by the City Council of the City of Bloomington, Minnesota at a regular meeting thereof, held this ___ day of ___, 198___. If applicable, the written comments and recommendations of the Commissioner of Transportation and the County Highway Engineer have been received by the City or the prescribed 30 day period has elapsed without receipt of such comments and recommendations, as provided by Minn. Statutes, Section 505.03, Subd. 2.

CITY COUNCIL OF BLOOMINGTON, MINNESOTA

BY: _____ its Mayor BY: _____ its Manager

PROPERTY TAXATION DEPARTMENT, Hennepin County, Minnesota

I hereby certify that there are no delinquent taxes for all years prior to 19__ for land described on this plat. Dated this ___ day of ___, 198__.

Vernon T. Hoppe, Director BY: _____ Tax Clerk

SURVEY DIVISION, Hennepin County, Minnesota

Pursuant to Chapter 810, Minnesota Laws of 1969, this plat has been approved this ___ day of ___, 198__.

Robert L. Bakka, Hennepin County Surveyor BY: _____

REGISTRAR OF TITLES, Hennepin County, Minnesota

I hereby certify that the within plat of BLAYLOCK 2ND ADDITION was filed for record in this office this ___ day of ___, 198__, at ___ o'clock __.M.

R. Dan Carlson, Registrar of Titles BY: _____ Deputy

