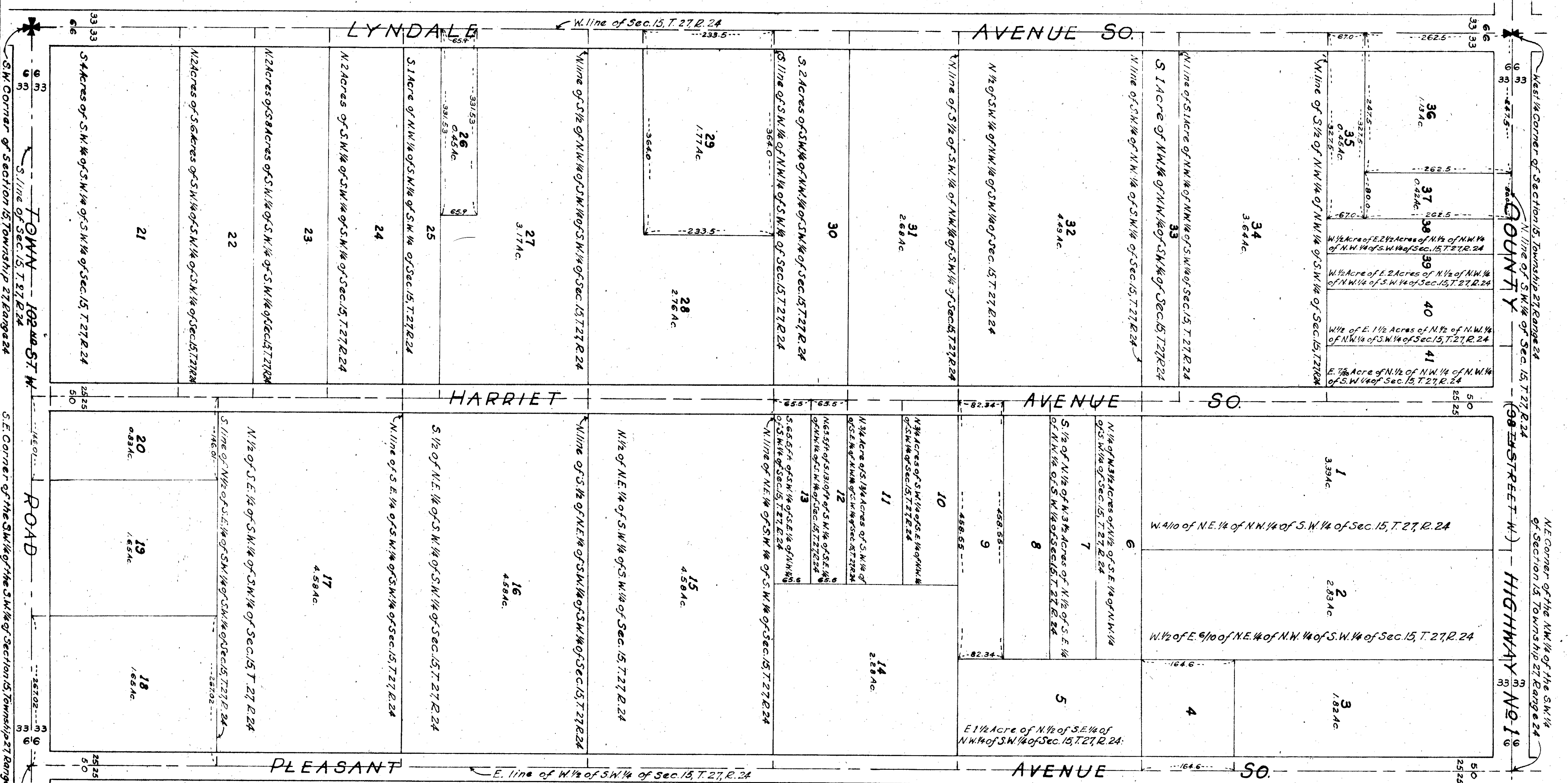


AUDITOR'S SUBDIVISION NUMBER 331

HENNEPIN COUNTY, MINNESOTA

SCALE 1"=100'

COMPILED BY JOHN W. SHAFFER
COUNTY SURVEYOR



I hereby certify that in accordance with Section 2219, Chapter 11, General Statutes of 1923, and by order of the County Auditor of Hennepin County, Minnesota, I have platted the following described land to wit:— All of the West 1/2 of the S.W. 1/4 of Section 15, Township 27, Range 24, except that part taken for Roads and Streets, that the plat on this sheet is a correct delineation of said platting and to be known as "AUDITOR'S SUBDIVISION NUMBER 331, HENNEPIN COUNTY, MINNESOTA," and that all distances are shown in feet and decimals of a foot.
Minneapolis, Minnesota 1944

County Surveyor
Hennepin County, Minnesota

I, Al. P. Erickson, County Auditor of Hennepin County, Minnesota, hereby certify that I have notified the owners of the land described in the foregoing County Surveyor's Certificate to plat the same and a reasonable time having elapsed since serving of said notice and said owners of said land having failed to comply with said notice and request, I have caused the same to be platted in accordance with the plat on this sheet and the same to be known as "AUDITOR'S SUBDIVISION NUMBER 331, HENNEPIN COUNTY, MINNESOTA."
Dated 1944

County Auditor
Hennepin County, Minnesota