

HIGHWOOD DRIVE STUDY

NEIGHBORHOOD OPEN HOUSE

OCTOBER 15, 2013



WELCOME

INTRODUCTION

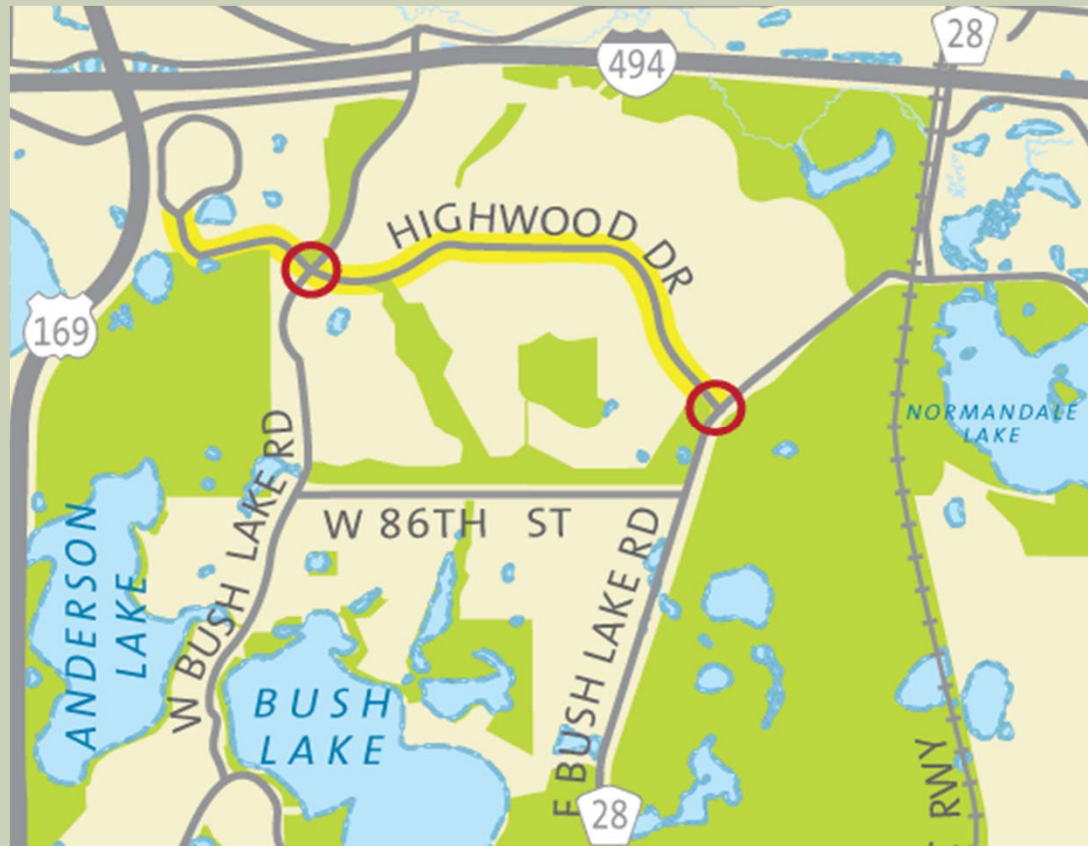
- The City of Bloomington is conducting the Highwood Drive Study to determine the future design section and intersection control needs for the corridor
- Study limits are from East Bush Lake Road to the west terminus near US Highway 169
- A Study Advisory Committee has been formed to guide the study, review materials and provide feedback

BACKGROUND

- Construction of the US 169/I-494 interchange was substantially completed in December of 2012
- The US 169 and Highwood Drive intersection was eliminated and a cul-de-sac was constructed
- Marth Road has been modified from a one-way road to a two-way road

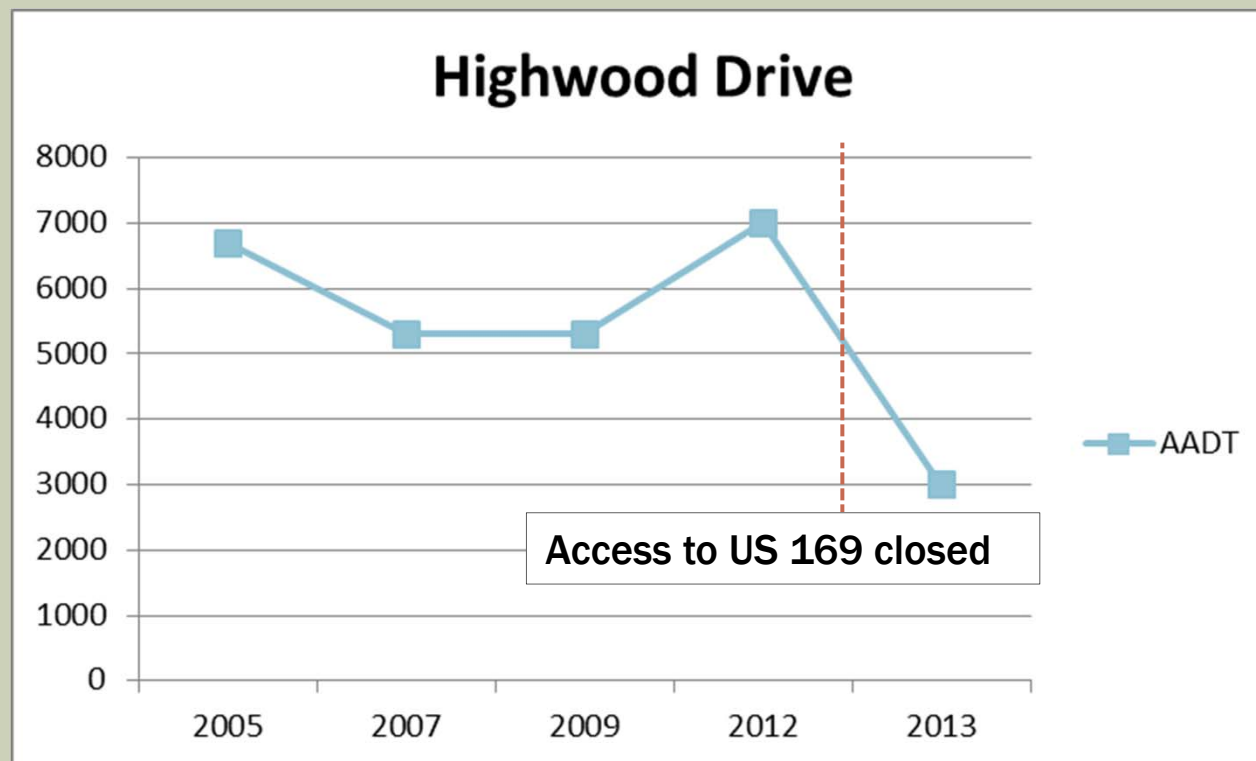
BACKGROUND

- It is anticipated that these modifications will continue to alter travel routes/patterns in the area



HISTORICAL TRAFFIC VOLUMES

- Traffic counts conducted in September 2012 indicate that the average daily traffic is between 2,300 and 3,000 vehicles per day



STUDY GOALS

- Develop an intersection control plan at the Highwood Drive intersections at East Bush Lake Road and West Bush Lake Road
- Identify near or medium term improvements at the Highwood Drive and East Bush Lake Road intersection
- Develop a roadway cross-section/lane configuration that will optimize use of the existing roadway for all modes of transportation, as well as aesthetics

STUDY GOALS

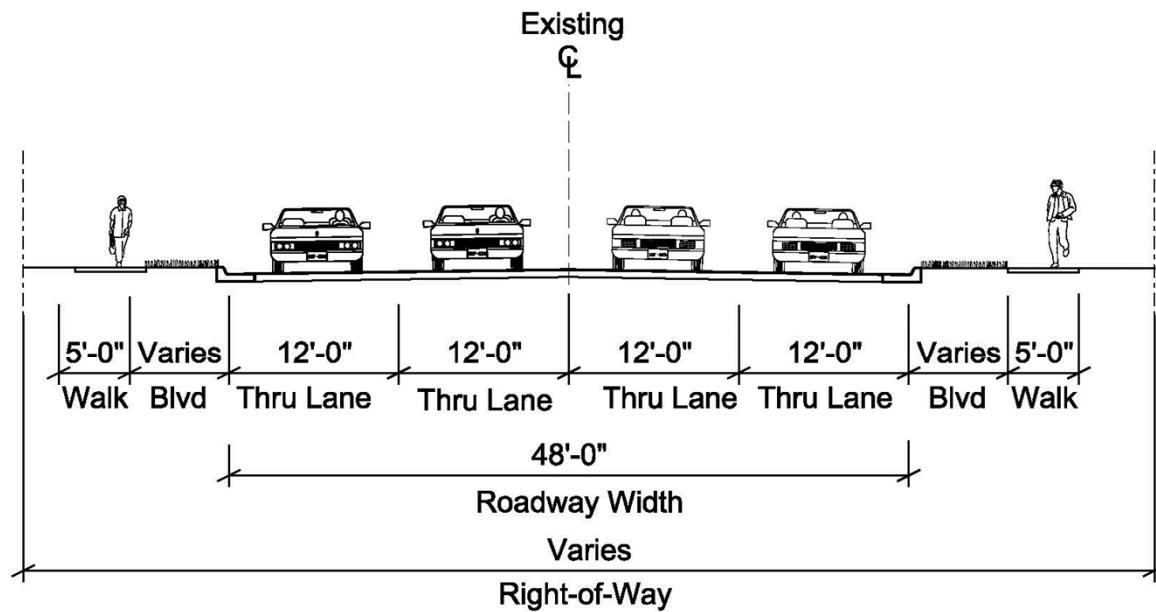
- Address pedestrian crossing safety concerns along the corridor
- Evaluate and address speeding concerns along the corridor, if necessary
- Identify and address other concerns along the corridor

EXISTING CONDITIONS

- Highwood Drive is a four-lane undivided roadway
- The curb to curb corridor width is 48 feet
- The posted speed limit is 35 mph
- There is existing sidewalk on both sides of the corridor
- Crosswalks are marked at selected intersections
- There is only one residential driveway access along the corridor

EXISTING CONDITIONS

Typical Section



EXISTING CONDITIONS

Traffic Operations

- Key intersections currently operate at an overall acceptable level of service
- Heavy eastbound delays at the intersection of Highwood Drive and East Bush Lake Road
- Queues exceed 250 feet at the Highwood Drive and East Bush Lake Road intersection

EXISTING CONDITIONS

Crash Analysis (Year 2010 to 2012)

- There were seven reported crashes in the study area during the three-year period
- All seven crashes occurred at the intersections
- One of the crashes involved a bicycle
- Crash rates are below the typical Hennepin County average rates for similar types of intersections

NEXT STEPS

- Development and analysis of intersection control and lane configuration options for the corridor
- These options and analysis results will be presented at the next open house

COMMENTS/FEEDBACK

- Please provide your input regarding issues and problem areas along the corridor

CONTACT INFORMATION

Website

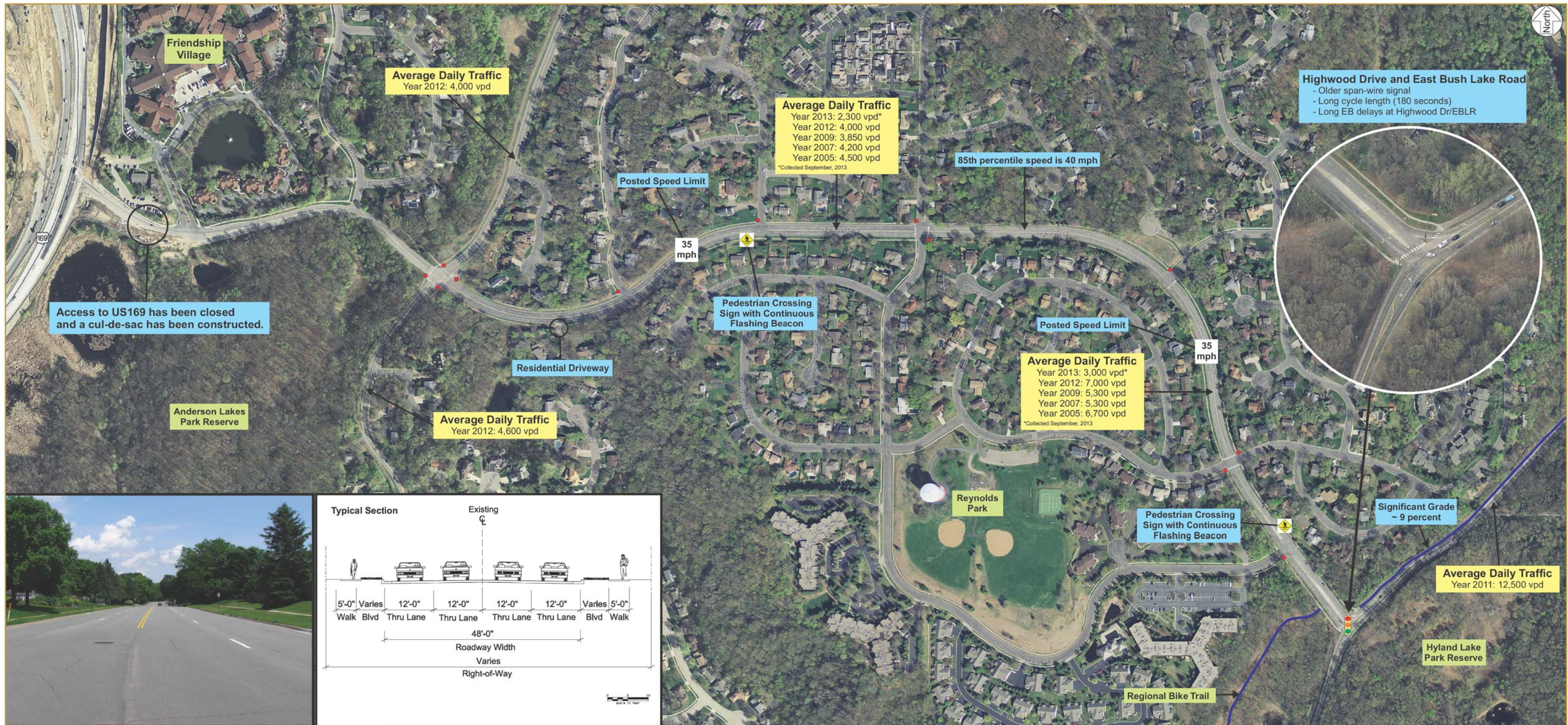
- www.ci.bloomington.mn.us

keyword: Highwood Study

City Contact

- Amy Marohn, P.E. 952-653-4532

Paul Jarvis 952-563-4548



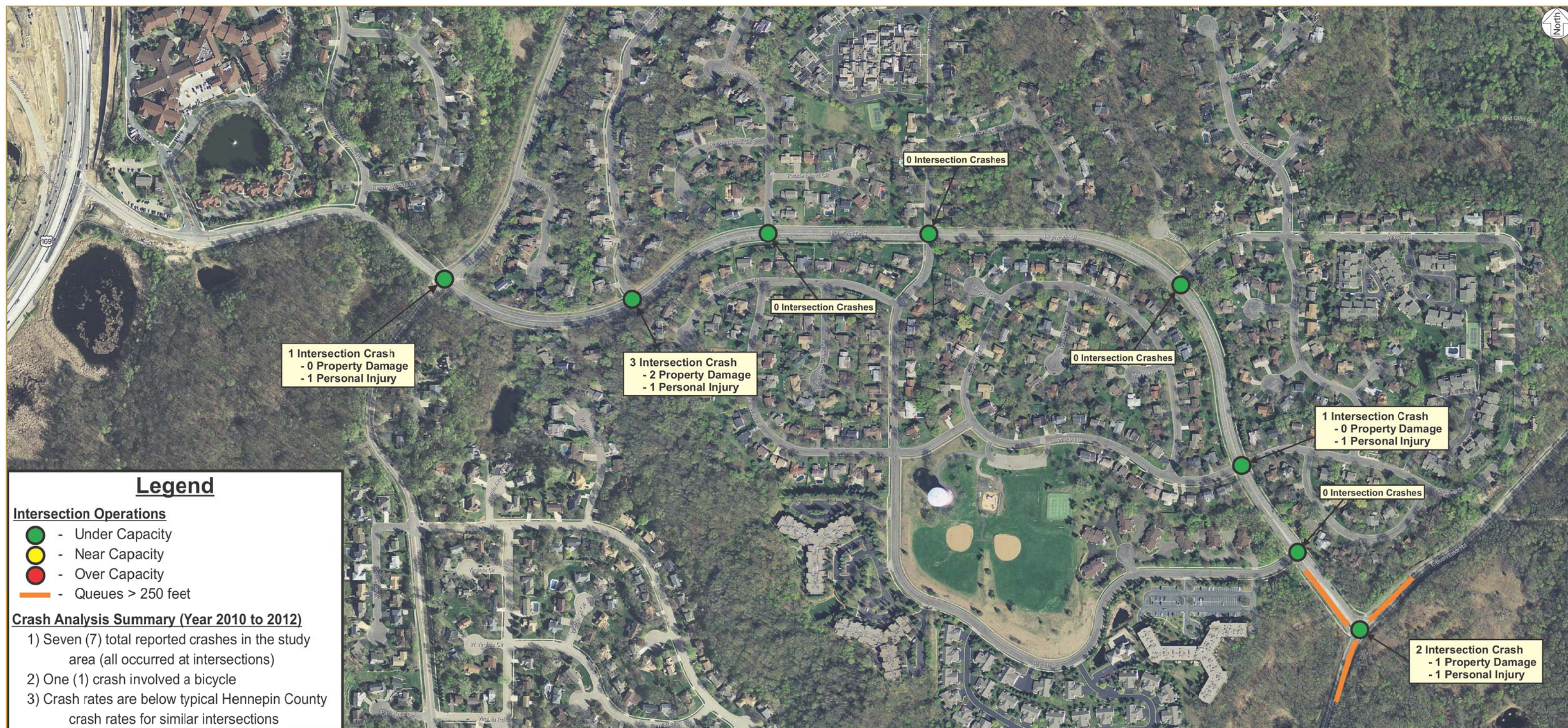
Existing Conditions

Roadway Characteristics, Traffic Volumes and Traffic Control



Highwood Drive Study





Existing Conditions Operations and Crash Analysis



Highwood Drive Study

