

Hennepin County South Suburban District Court Bloomington Civic Plaza



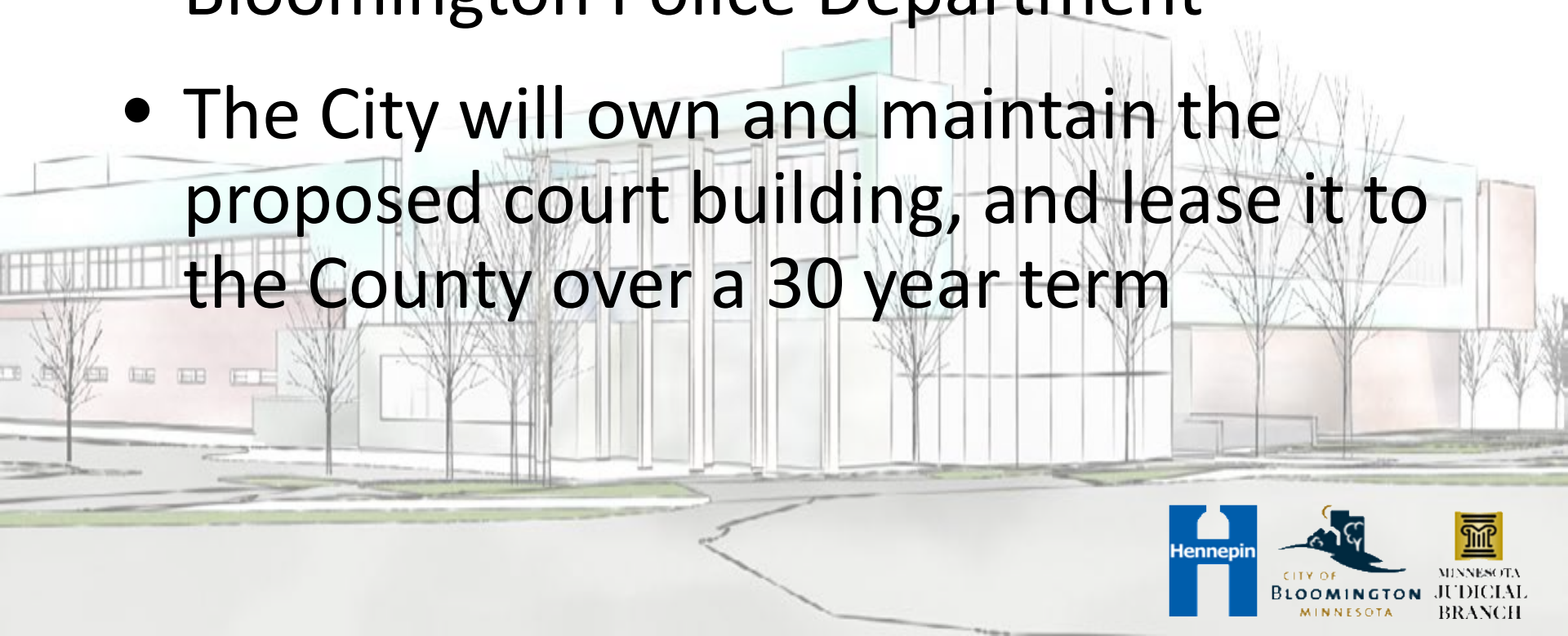
General Information

- Hennepin County District Court facility at Southdale is scheduled to close
- Hennepin County provides court services to suburban communities through facilities in Minnetonka (Ridgedale), Brooklyn Center (Brookdale), and Edina (Southdale)
- South Suburban District Court serves the cities of Bloomington, Edina, Richfield, St. Louis Park, and the Metropolitan Airport Commission



General Information

- Two story, 36,000 square foot facility proposed –with a connection to the Bloomington Police Department
- The City will own and maintain the proposed court building, and lease it to the County over a 30 year term



Location



Cost Estimates

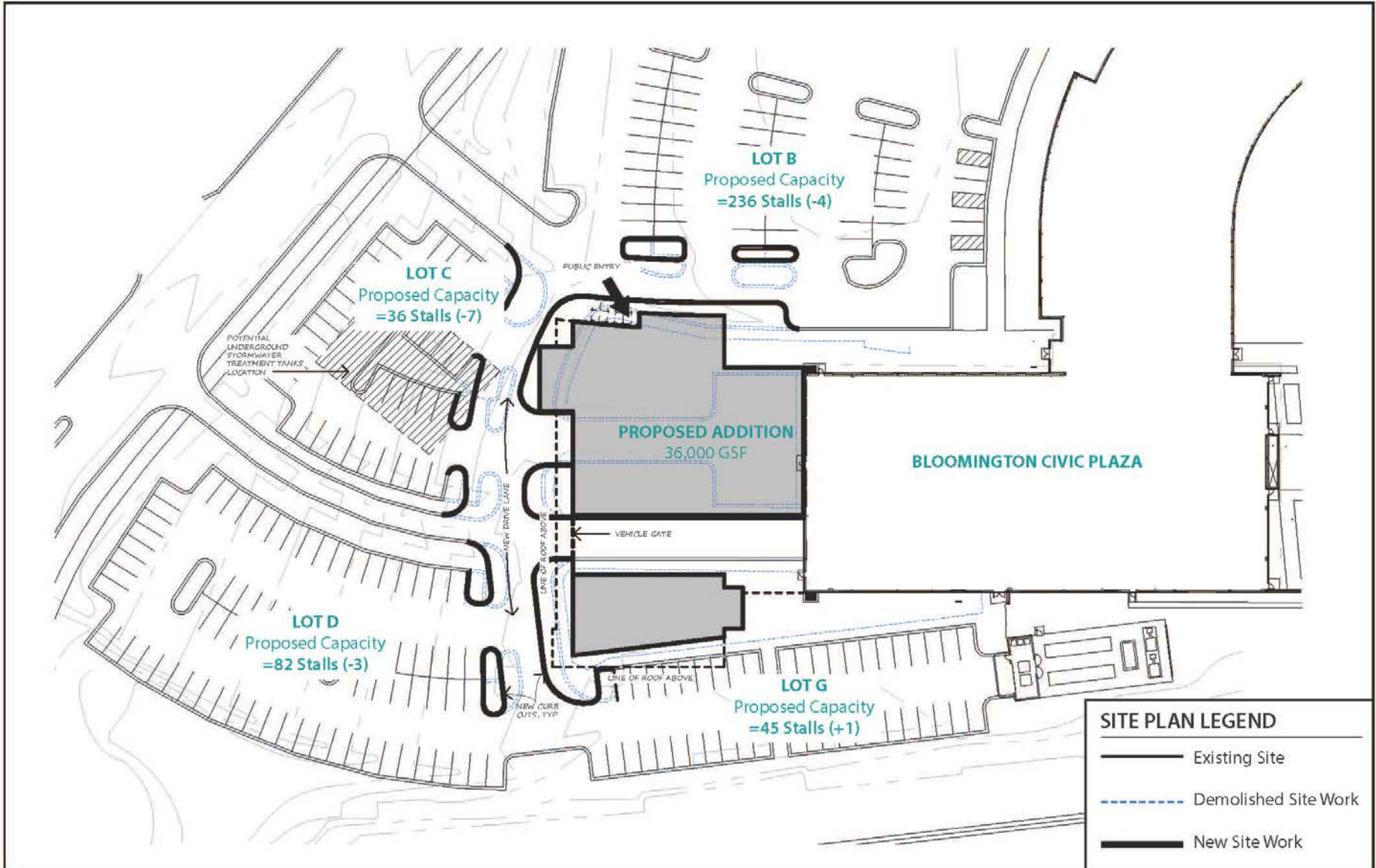
Total Development Cost: \$15.7 million

- Architectural/engineering
- Construction
- Equipment, furnishings, and fixtures
- Permit fees
- Storm water management
- Wayfinding



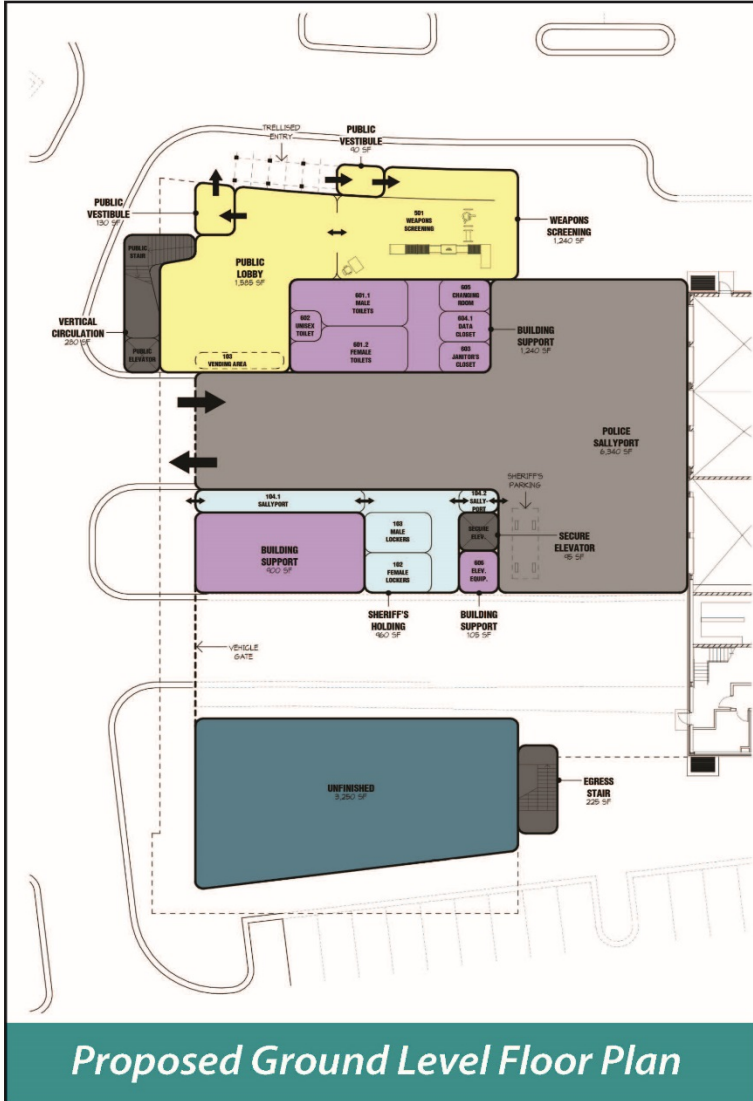
South Suburban Courts at Bloomington

Proposed Site Plan



South Suburban Courts at Bloomington

Schematic Design Drawings



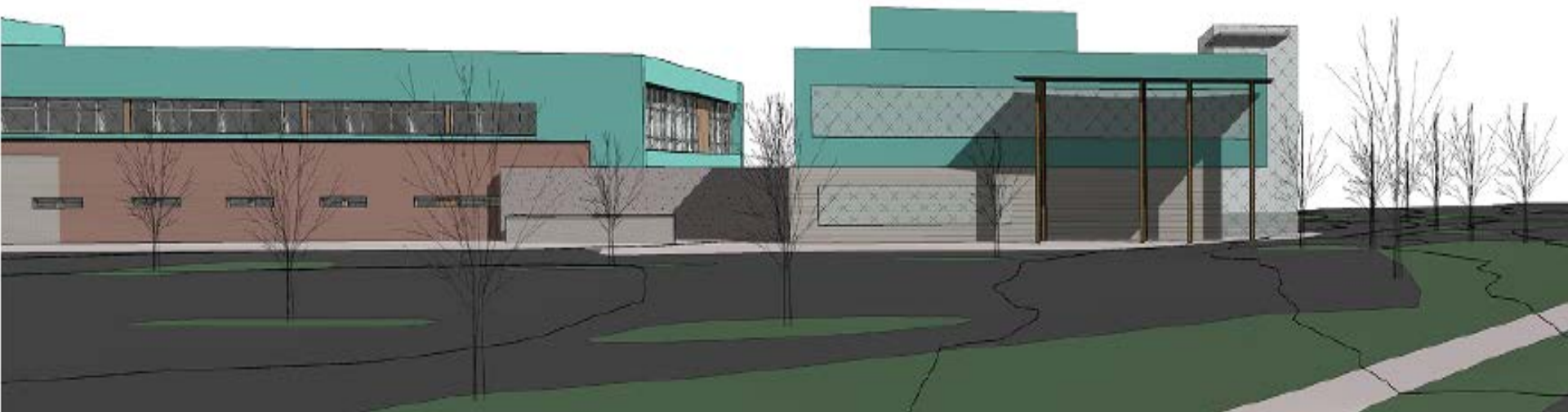
Proposed Ground Level Floor Plan



Proposed Second Level Floor Plan

DEPARTMENT LEGEND

- District Court
- Sheriff's Holding Area
- Community Corrections
- Public Defender
- Shared Support
- City/Police Department Space
- Building Support
- Unfinished Space
- Public Egress
- Secure/Staff Circulation
- Vertical Circulation



View Looking Southeast



What services will the court facility provide?

The suburban courts are responsible for ---

- **processing all non-felony traffic and criminal cases for the cities in their respective divisions.**
- **process all traffic violation tickets,**
- **respond to public questions on criminal matters, and**
- **provide a hearing officer who conducts hearings on traffic and petty misdemeanor matters.**



*How many people will work at
the courts building?*

**An average of 30
employees will work in the
proposed Bloomington
Civic Plaza District Court
facility each weekday
during business hours.**



Wayfinding



- The project will include wayfinding improvements to assist visitors in locating their destination and designated parking
- Signage and other wayfinding improvements will be developed in subsequent project design, in coordination with City staff



Storm Water Management

- Underground storm water chamber/culvert system
- System is designed to collect rain water, convey to storm sewer, and filter to aquifer
- Will be located under west parking lot, immediately west of proposed building



Parking Improvements

- The City agrees to allow the County to utilize existing excess parking on the Civic Plaza campus, as long as such excess capacity exists.
- The City will allow the County/courts employees to park in the impound lot across Logan (30+ spaces)



Impound Lot



Bloomington Civic Plaza

– Public Safety

- Weapons screening/controlled access
- Non-felony offenses
- Safety record at suburban courts
- Bloomington Police Department and Hennepin County Sheriff's Department presence



Project Timeline

- August 31, 2016 – Open House in Bloomington Council Chambers (6 pm -7 pm)
- September 12, 2016 – City Council review and approval of development agreement and lease
- October 2016 – June 2017 – construction plans, bidding, city approvals
- June 2017 – Start of construction
- August 2018 – Construction complete

