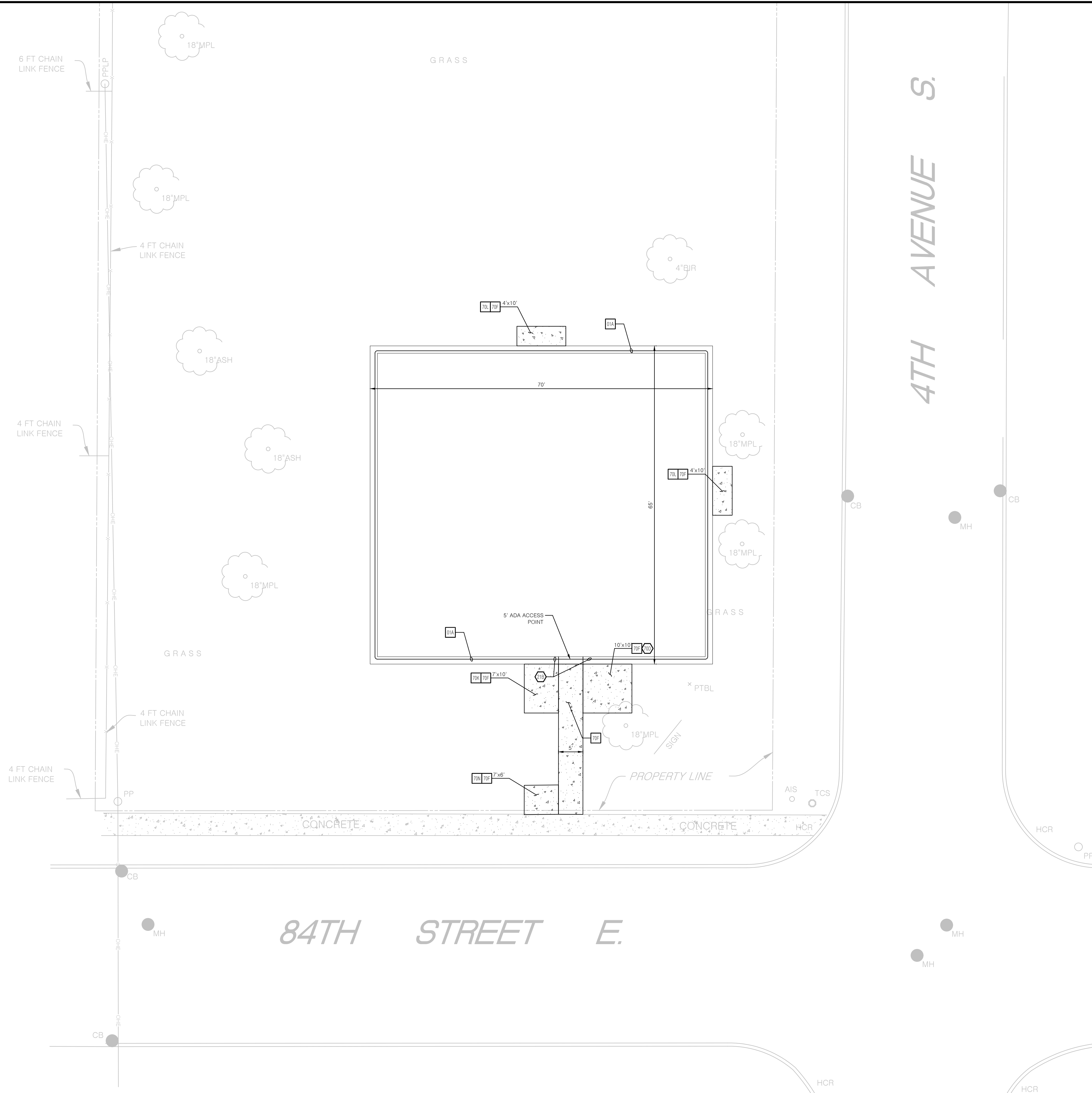


JOB # 20888 DRAWING: 20888-01-01-01.dwg LAST SAVED BY: ARENUSCH LOCATION: p: 20888 20888-01-01-01.dwg 20888-01-01-01.dwg 20888-01-01-01.dwg





**Know what's below.
Call before you dig.**



0 10' 15' 20'
SCALE IN FEET

PROPOSED LEGEND

	BOUNDARY LINE
	RIGHT OF WAY LINE
	LIMITS OF NEW TRAIL CONSTRUCTION
	LIMITS OF CONCRETE SLAB/SIDEWALK

GENERAL SITE NOTES

- ALL DIMENSIONS SHOWN ARE TO THE FACE OF CURB UNLESS OTHERWISE NOTED.
- ALL CURB RETURN RADII SHALL BE 2' OR 10', AS SHOWN TYPICAL ON THIS PLAN, UNLESS OTHERWISE NOTED.

GENERAL LANDSCAPE NOTES

- LOCATE ALL UTILITIES AND SITE LIGHTING CONDUITS BEFORE LANDSCAPE CONSTRUCTION BEGINS.
- NOTIFY ENGINEER OR DESIGNATED REPRESENTATIVE OF ANY LAYOUT DISCREPANCIES PRIOR TO ANY PLANTING.
- ALL DISTURBED AREAS SHALL BE SEEDED AS FOLLOWS:

GRASS SEED MIX:	40% PERENNIAL RYE 40% TURF TYPE FESCUE 20% BERMUDAGRASS 5 LB. PER 1,000 S.F.
AGRICULTURAL LIME:	2 LB. PER 1,000 S.F.
FERTILIZER:	10-10-10 2 LB. PER 1,000 S.F.
MULCH:	SHREDED HARDWOOD MULCH 4" DEPTH
- ALL SLOPES AND AREAS DISTURBED BY CONSTRUCTION SHALL BE GRADED SMOOTH AND FOUR INCHES OF TOPSOIL APPLIED. IF ADEQUATE TOPSOIL IS NOT AVAILABLE ON SITE, THE CONTRACTOR SHALL PROVIDE TOPSOIL, APPROVED BY THE OWNER, AS NEEDED. THE AREA SHALL THEN BE SEEDED/SODDED, FERTILIZED, MULCHED, WATERED AND MAINTAINED UNTIL HARDY GRASS GROWTH IS ESTABLISHED IN ALL AREAS. ANY RELOCATED TREES SHALL BE MAINTAINED UNTIL SUCH POINT AS TREE IS RE-ESTABLISHED. ANY AREAS DISTURBED FOR ANY REASON PRIOR TO FINAL ACCEPTANCE OF THE PROJECT SHALL BE CORRECTED BY THE CONTRACTOR AT NO ADDITIONAL COST TO THE OWNER.
- MAINTAIN 5' MIN. HORIZONTAL SEPARATION BETWEEN TREE PLANTINGS AND ALL UTILITIES.
- ACCEPTANCE OF GRADING AND SEEDING SHALL BE BY ENGINEER AND/OR OWNER. THE CONTRACTOR SHALL ASSUME MAINTENANCE RESPONSIBILITIES FOR A MINIMUM OF ONE (1) YEAR OR UNTIL SECOND CUTTING, WHICHEVER IS LONGER. MAINTENANCE SHALL INCLUDE WATERING, WEEDING, RESEEDING AND OTHER OPERATIONS NECESSARY TO KEEP ALL LAWN AREAS IN A THRIVING CONDITION. UPON FINAL ACCEPTANCE, OWNER SHALL ASSUME ALL MAINTENANCE RESPONSIBILITIES. AFTER LAWN AREAS HAVE GERMINATED, AREAS WHICH FAIL TO SHOW A UNIFORM STAND OF GRASS FOR ANY REASON WHATSOEVER SHALL BE RE-SEEDED REPEATEDLY UNTIL ALL AREAS ARE COVERED WITH A SATISFACTORY STAND OF GRASS. MINIMUM ACCEPTANCE OF SEEDED LAWN AREAS MAY INCLUDE SCATTERED BARE SPOTS, NONE OF WHICH ARE LARGER THAN 1 SQUARE FOOT, AND WHEN COMBINED DO NOT EXCEED 2% OF TOTAL SEEDED LAWN AREA.

GENERAL GRADING NOTES

- PRIOR TO INSTALLATION OF STORM SEWER, THE CONTRACTOR SHALL EXCAVATE, VERIFY, AND CALCULATE ALL CROSSINGS AND INFORM THE OWNER AND THE ENGINEER OF ANY CONFLICTS PRIOR TO CONSTRUCTION. THE ENGINEER WILL BE HELD HARMLESS IN THE EVENT THE ENGINEER IS NOT NOTIFIED OF DESIGN CONFLICTS.
- ALL SLOPES AND AREAS DISTURBED BY CONSTRUCTION SHALL BE GRADED SMOOTH AND 4" OF TOPSOIL APPLIED. IF ADEQUATE TOPSOIL IS NOT AVAILABLE ON SITE, THE CONTRACTOR SHALL PROVIDE TOPSOIL, AS NEEDED. THE AREA SHALL THEN BE SEEDED, FERTILIZED, MULCHED, WATERED AND MAINTAINED UNTIL HARDY GRASS GROWTH IS ESTABLISHED IN ALL AREAS. ANY AREAS DISTURBED FOR ANY REASON PRIOR TO FINAL ACCEPTANCE OF THE PROJECT SHALL BE CORRECTED BY THE CONTRACTOR AT NO ADDITIONAL COST TO THE OWNER.
- THE CONTRACTOR IS SPECIFICALLY CAUTIONED THAT THE LOCATION AND/OR ELEVATION OF EXISTING UTILITIES AS SHOWN ON THESE PLANS IS BASED ON RECORDS OF THE VARIOUS UTILITY COMPANIES, AND WHERE POSSIBLE, MEASUREMENTS TAKEN IN THE FIELD. THE INFORMATION IS NOT TO BE RELIED ON AS BEING EXACT OR COMPLETE. THE CONTRACTOR MUST CALL THE APPROPRIATE UTILITY COMPANY AT LEAST 48 HOURS BEFORE ANY EXCAVATION TO REQUEST EXACT FIELD LOCATION OF UTILITIES.

SITE NOTES

18B	POINT OF RELOCATION
18D	MATCH EXISTING PAVEMENT ELEVATIONS.
21B	TAPER CURB FROM 6" TO 0" OVER 2'
70A	MODEL B871-BK WITH BACKBOARD (WHITE), SUPPORT POST (BLACK) AND HOOP (ORANGE) MANUFACTURED BY BISON, INC. (WWW.BISON.COM) OR APPROVED EQUAL. GOAL ASSEMBLY SHALL BE 10' FIXED IN HEIGHT AND INSTALLED WITH A 60" DEEP X 24" DIAMETER CONCRETE FOOTING, 5' BACK OF BASELINE.
70B	15' 5-RW ALUMINUM BLEACHER WITH CONCRETE MOUNTING HARDWARE, BY ULINE MODEL H4408 OR APPROVED EQUAL.
70C	PREMIUM PARK GRILL, MODEL #136-1040 (BLACK) (WWW.THEPARKCATALOG.COM) OR APPROVED EQUAL, INSTALL WITH 48" DEEP X 12" DIAMETER CONCRETE FOOTING.
70D	8' PICNIC TABLE MODEL #781P AND #181F/HDGP BY WEBCOAT PRODUCTS (WWW.WEBCOAT.COM) OR APPROVED EQUAL. TABLE TO HAVE FOREST GREEN TOP AND SEATS WITH BLACK FRAME.
70E	NEW BASKETBALL COURT STRIPING, WHITE LINES.
70F	1.5" BITUMINOUS OVERLAY.
70G	CONTRACTOR TO CONSTRUCT/INSTALL NEW 28' HEXAGON PARK SHELTER AND SLAB, RCP SHELTERS MODEL AS-HEX28-04 OR APPROVED EQUAL. SHELTER TO HAVE FOREST GREEN ROOF AND DARK BROWN SUPPORT POSTS.
70H	INSTALL NEW TENNIS COURT NETS.

SITE DETAILS

01A	B6-12 CURB AND GUTTER
70F	CONCRETE SLAB/SIDEWALK
70G	PLAYGROUND CURBING AND UNDERDRAIN
70I	NEW TRAIL CONSTRUCTION
70J	PEDESTRIAN RAMP DETAIL
70K	7-BIKE WAVE RACK, MODEL #SAR2015 BELOW GRADE (WWW.BIKERACKSHOPS.COM) OR APPROVED EQUAL. RACK TO BE FOREST GREEN AND INSTALLED WITH (2) 48" DEEP X 12" DIAMETER CONCRETE FOOTINGS.
70L	8' WABASH VALLEY BENCH (MODEL PP305D) OR APPROVED EQUAL. BENCH SHALL BE PLASTIC-COATED WITH BACK SUPPORT WITH FOREST GREEN SEATS/BACK AND BLACK FRAMES. TO BE INSTALLED WITH (2) 48" DEEP X 12" DIAMETER CONCRETE FOOTINGS.
70M	1.5" BITUMINOUS OVERLAY
70N	PORT-A-POTTY WOOD ENCLOSURE
70P	TENNIS COURT STRIPING
70Q	21' PLAYERS BENCH
84A	TEMPORARY SILT FENCE

**PRELIMINARY
NOT FOR
CONSTRUCTION**

20888	12/14/16	ALC	ALC	AJR	AJR
CEI PROJECT NO.	INITIAL DATE	DPOR	PM	DES	DRW
CEI Engineering Associates, Inc.					
ENGINEERS • PLANNERS • SURVEYORS LANDSCAPE ARCHITECTS • ENVIRONMENTAL SCIENTISTS					
2025 Centre Pointe Blvd., Suite 210 (651)452-8960 Mendota Heights, MN 55120 (651)452-1148					
CITY OF BLOOMINGTON					
8330 4TH AVENUE SOUTH BLOOMINGTON, MN					
EFFA PLAYLOT - SITE PLAN				REV DATE 1/12/17 REV-0	SHEET NO. 2 OF 2