

Existing Conditions - I-35W Bridge to Nicollet Avenue

- Curb to curb width is 44 feet
- Right of Way width is 64 feet west of Lyndale Avenue
- Right of Way width is 80 feet+ east of Lyndale Avenue
- Four-lane undivided roadway
- Speed Limit is 35 mph
- Sidewalk on both sides of the corridor
- Boulevard Varies
- One transit route with five stops east of Lyndale Avenue
- Overhead utilities mainly on the south side
- Residential and mixed land uses
- Large intersection at Lyndale Avenue
- Key intersections operate acceptably during peak periods

On-street parking with peak hour restrictions on north side

7,000
(15,000)

At-grade railroad crossing

9,000
(15,000)

Disabled users due to nearby clinic

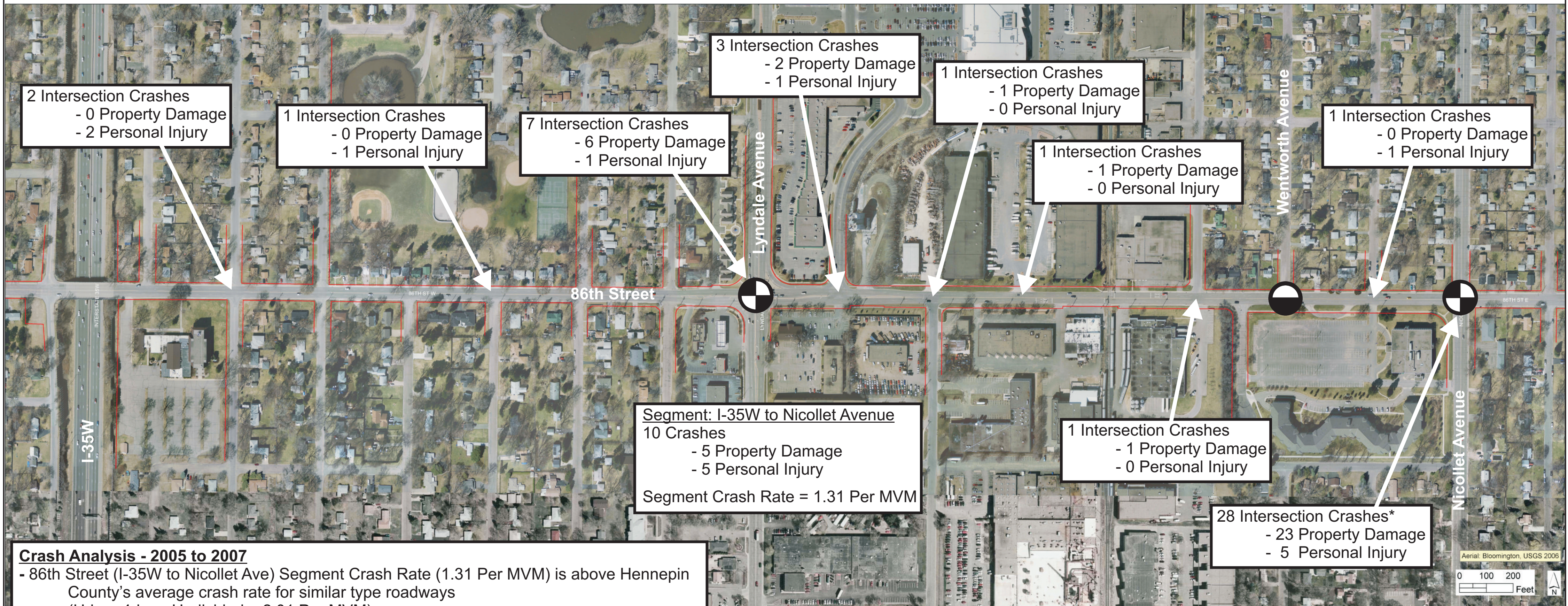
General Issues and Concerns

- Need to provide safer pedestrian and bicycle facilities
- Lack of sidewalk width is a concern
- High truck traffic volumes at Lyndale Avenue and into the nearby businesses

Legend

- XX = Current Year Daily Traffic Volumes (2006-2007)
- (XX) = Year 2030 Daily Traffic Volumes
- ⊕ = Key Signalized Intersection
- = Key Side-Street Stop Controlled Intersection

SRF CONSULTING GROUP, INC.



Crash Analysis - 2005 to 2007

- 86th Street (I-35W to Nicollet Ave) Segment Crash Rate (1.31 Per MVM) is above Hennepin County's average crash rate for similar type roadways (Urban 4-lane Undivided = 2.01 Per MVM)
- Intersection Crash Rate for 86th Street and Lyndale Avenue (0.28 Per MEV) is below Hennepin County's average crash rate for similar type intersections (Signal: Both Roads Channelized with stub island = 0.50 Per MEV)
- Intersection Crash Rate for 86th Street and Nicollet Avenue (1.34 Per MEV)* is above Hennepin County's average crash rate for similar type intersections (Signal: No Channelization = 0.85 Per MEV)

* Note: Year 2007-2009 data was used for 86th Street and Nicollet Avenue



