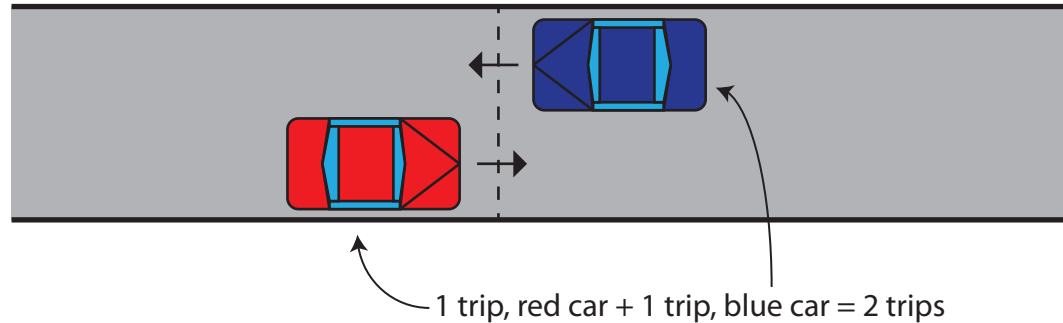


What is a “trip”, and how many are on your street?

A “trip” is counted when a vehicle passes a fixed point, in either direction.

For Example:



Did you know?



The average single family residential home in the United States produces about 10 trips per day

Road Type	Typical Trip Range	Examples
Local Street	300 to 1,500 vpd	
Local Collector*	1,000 to 2,000 vpd	Humboldt (South of 106th)
Collector Street	2,000 to 5,000 vpd	Humboldt (North of 106th)
Minor Arterial Street	5,000 to 30,000 vpd	106th Street, Nicollet Ave., 102nd Street
Principal Arterial	20,000 to 40,000 vpd	Old Shakopee Road, Lyndale, Normandale Boulevard, France Ave.
Freeway, Expressway	60,000 to 200,000	35W, I494, TH169, TH77