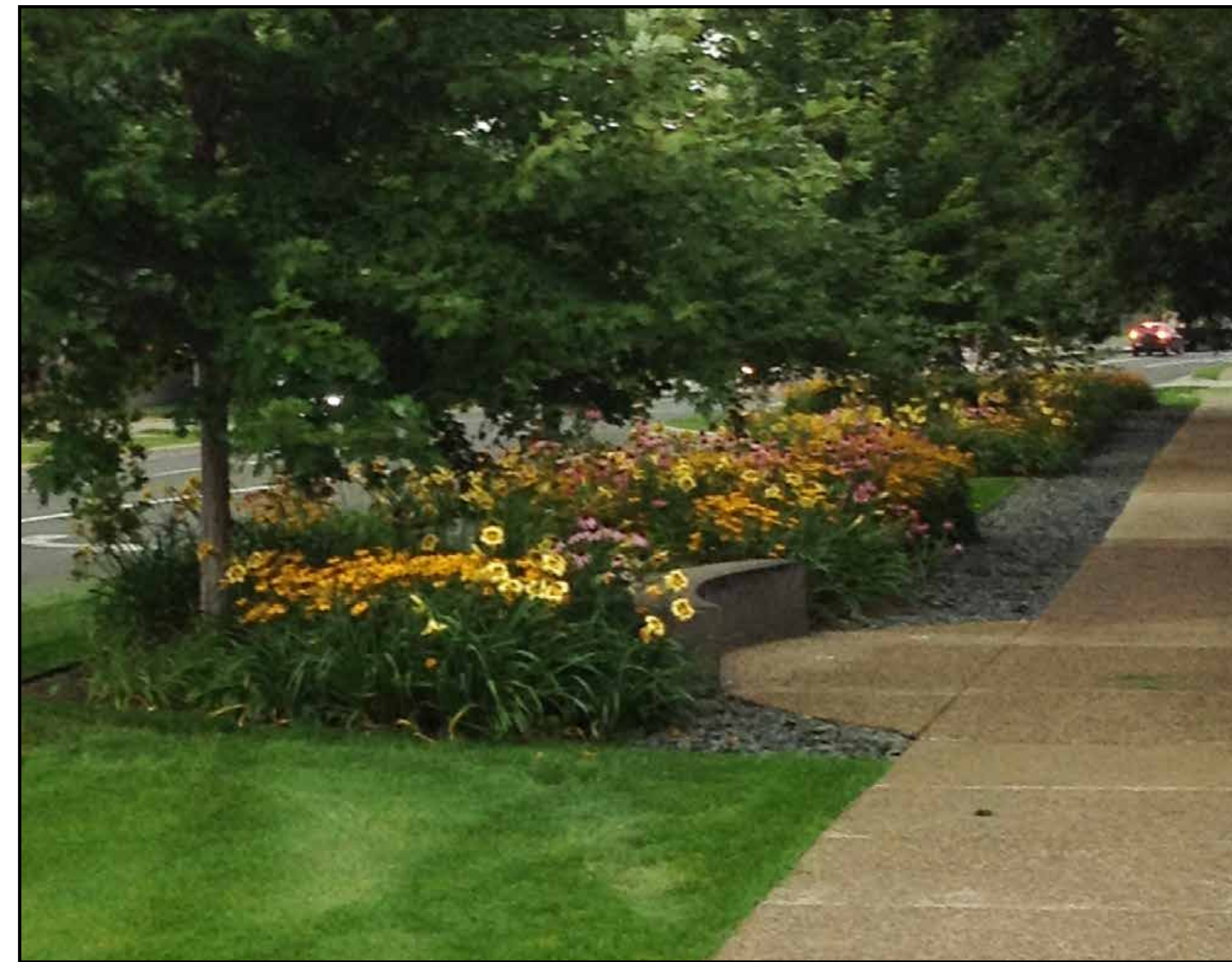
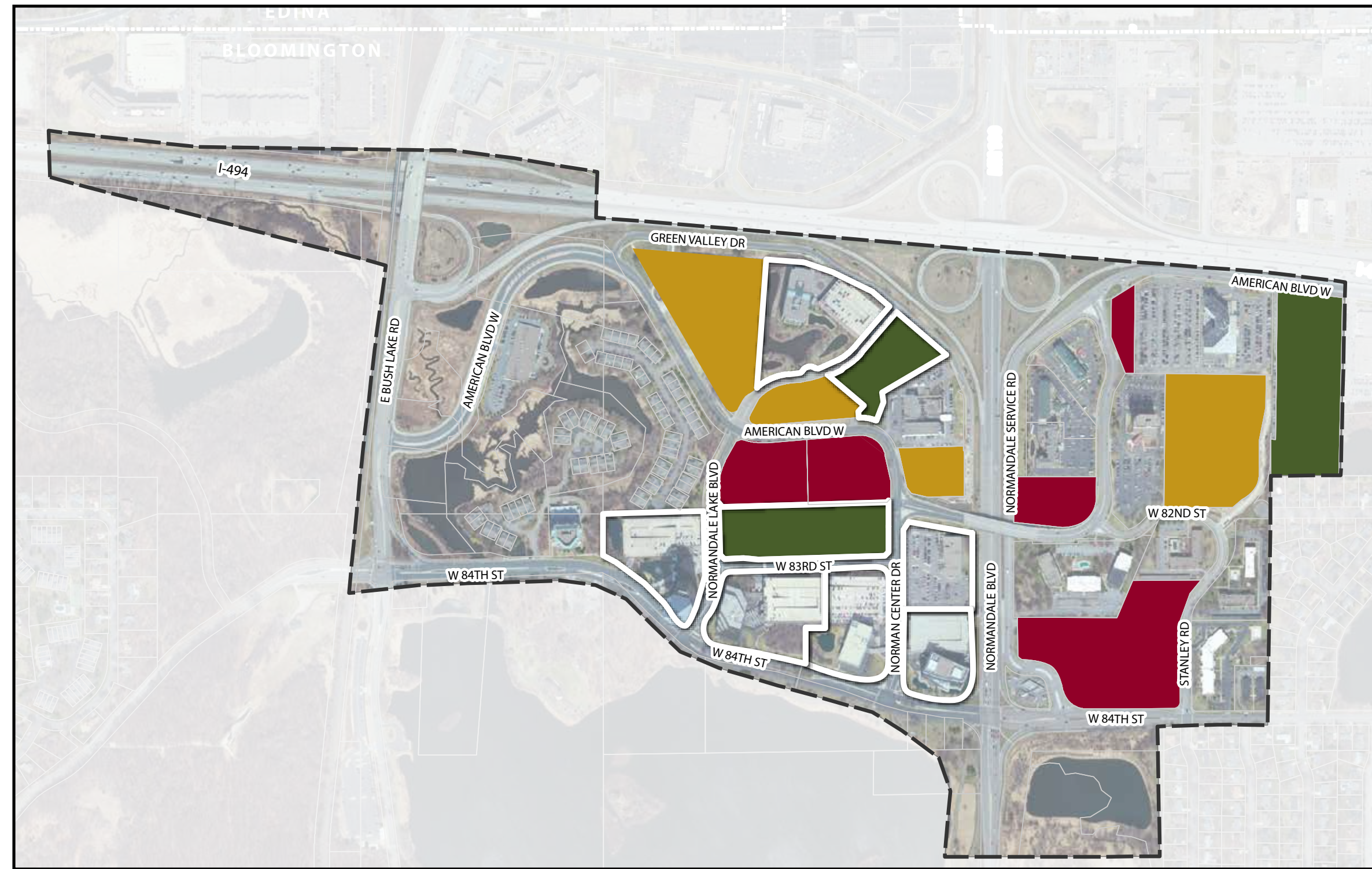


OPEN HOUSE

NORMANDALE LAKE

DISTRICT PLAN

2016 UPDATE



2008 Normandale Lake District Plan

Vision Statement

To position the entire District to gain maximum benefit from private and public investments, the vision for the District is to:

Continue to develop as a high quality, high density mixed use area in a manner that extends, reinforces and celebrates the natural environment.

Goals

1. Expand the park-like character.
2. Improve identity and connectivity.
3. Achieve a more visually cohesive built environment.

The Plan vision and goals set in the 2008 Normandale Lake District Plan will continue to guide the district and the 2016 Plan Update process.

What will the 2016 Plan update include?

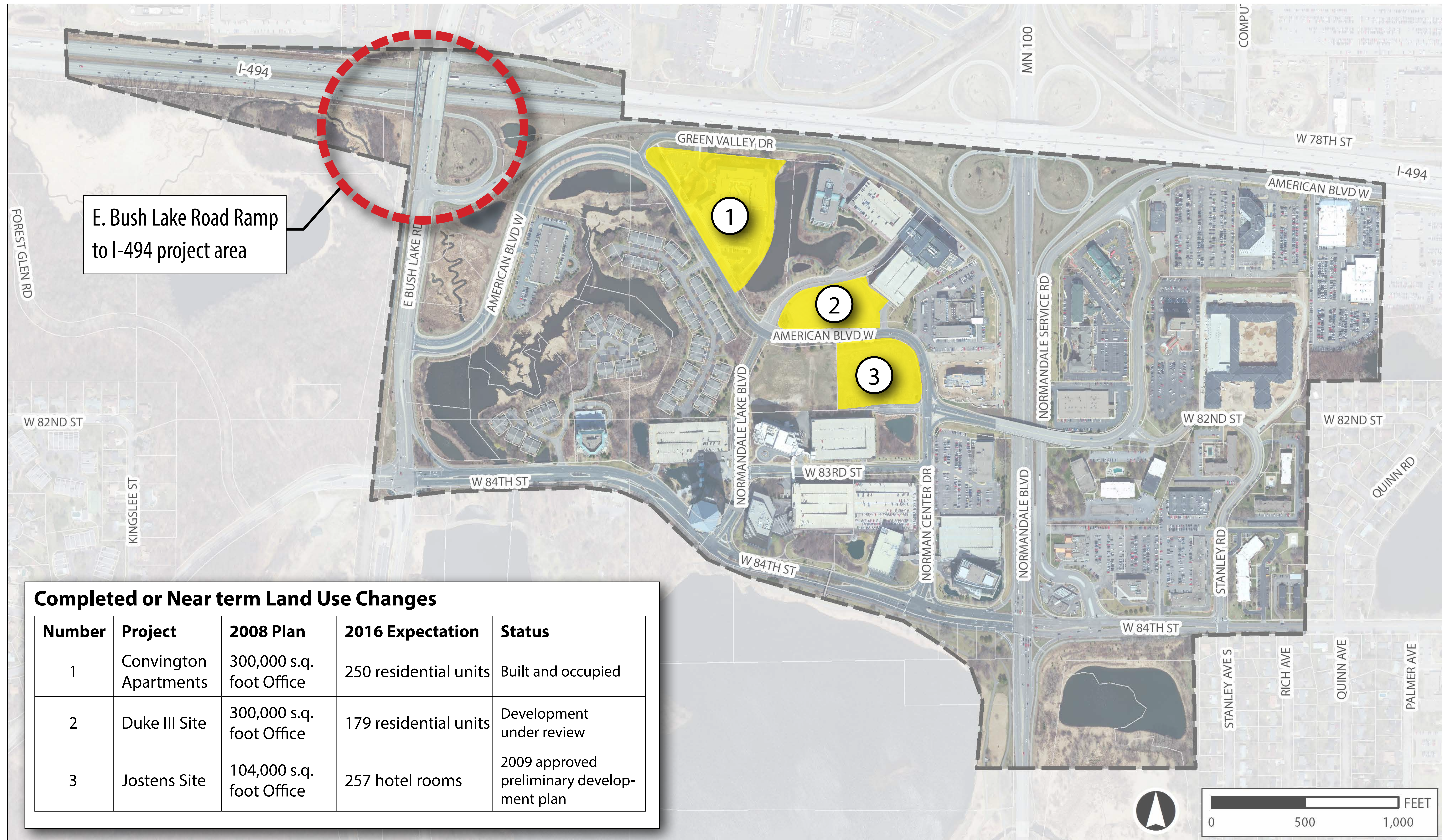
The update to the Normandale Lake District Plan will include:

- Updating future land use assumptions.
- Updating traffic and utility modeling based on future land use assumptions.
- Updating the implementation plan based on model outcomes.
- Updating the funding strategy to pay for recommended public improvements in the district.

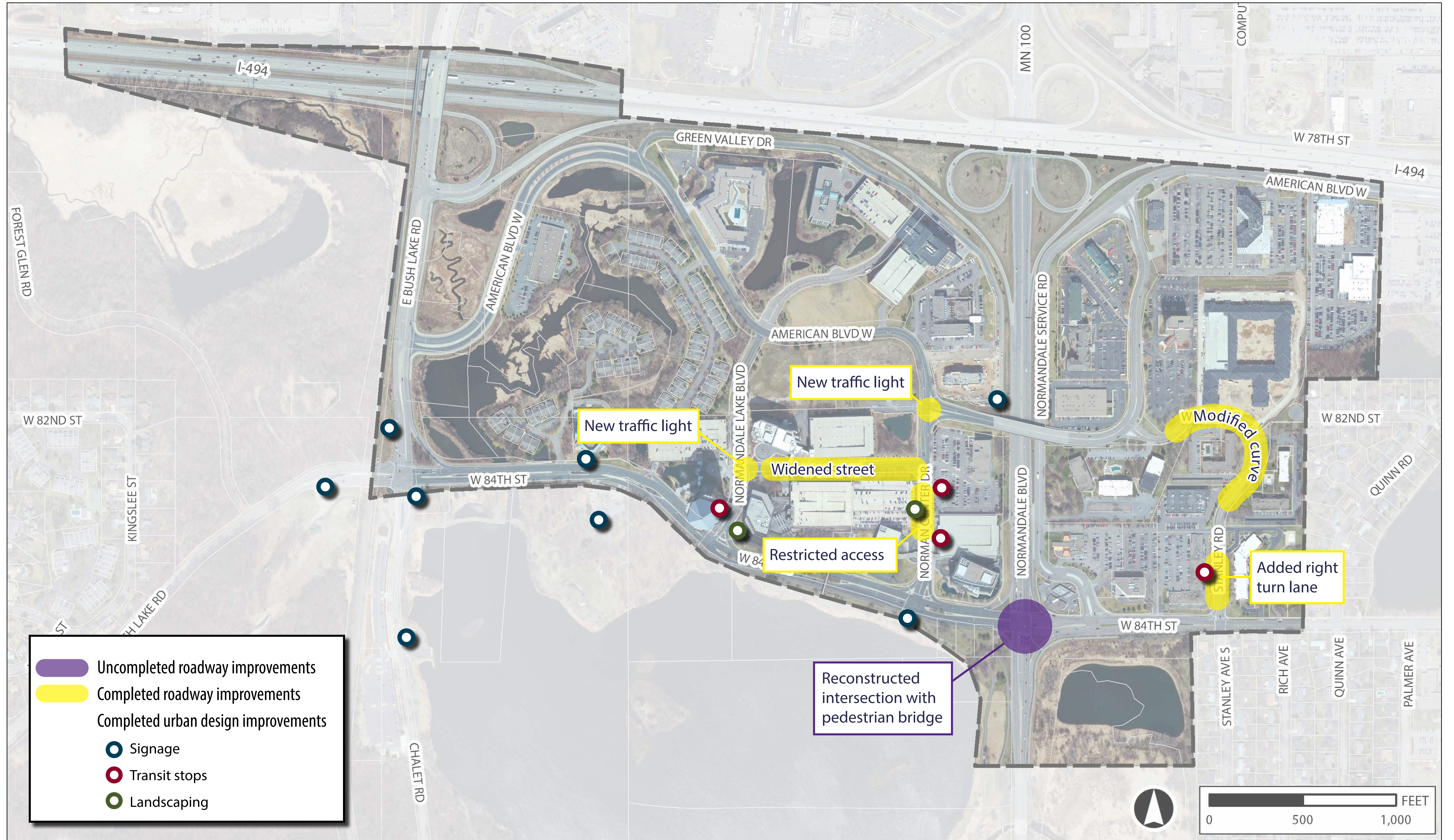
Why are we updating the 2008 Master Plan?

1. To evaluate the impact of completed or near term land use changes on public infrastructure needs and priorities.

2. To incorporate the East Bush Lake Road/I-494 ramp into the district.



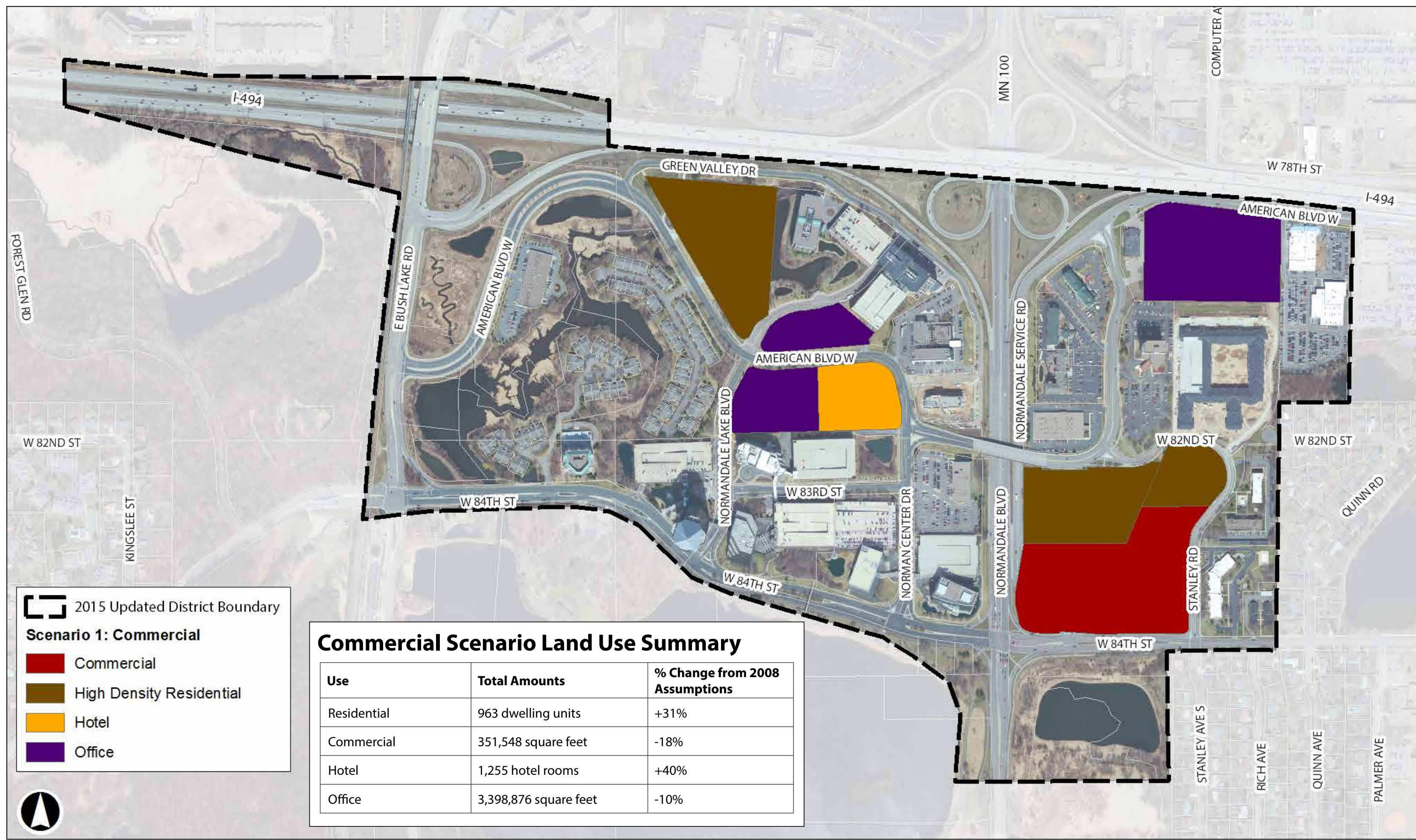
Status of Key 2008 Recommended Projects



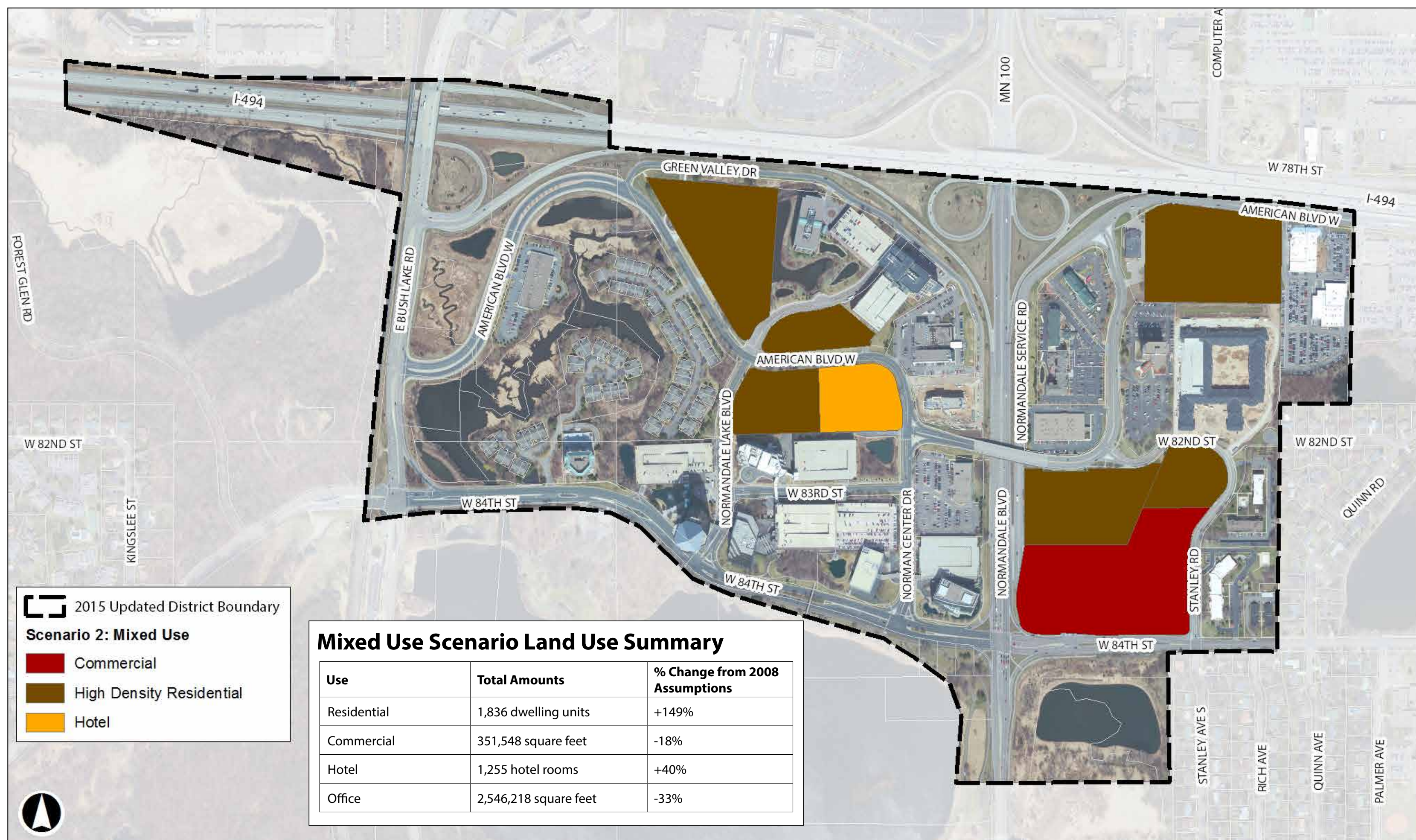
Traffic and Utility Scenario Modeling

Two land use scenarios were developed to model future traffic levels and utility needs.

Scenario 1: Commercial



Scenario 2: Mixed Use



Traffic Modeling Takeaways

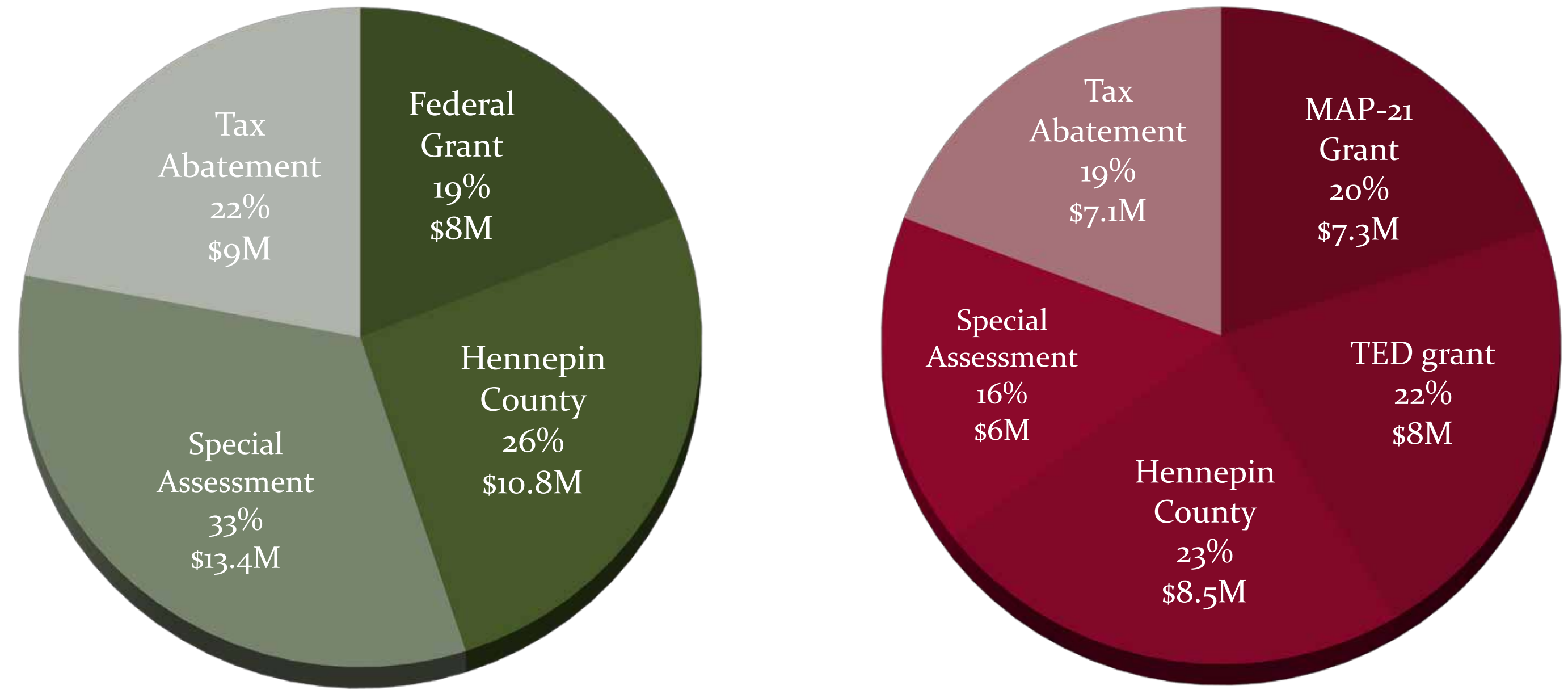
- Both scenarios had only minor future traffic impacts and the impacts are very similar in both scenarios.
- The same traffic improvements are recommended for both scenarios.
- The results demonstrated that the enlarged 84th St. and Normandale Blvd. intersection recommended by the 2008 District Plan is NOT needed.
- Therefore, the 2008 recommended pedestrian bridge over the enlarged intersection is also not needed.
- This change in priorities allows for other improvements to bicycle and pedestrian facilities within the district.

Utility Modeling Takeaways

- Future watermain and sanitary sewer upgrades are needed in both scenarios.
- The same upgrades are recommended for both scenarios.

Financial Model: 2008 vs 2016

2008: \$41.2 million **2016: \$36.9 million**



2008: Key financial model takeaways

- The full cost of the 2008 Implementation Project Plan was \$41.2 million.
- The Plan included the cost to enlarge the intersection of 84th St. and Normandale Blvd. and build a pedestrian bridge over Normandale Blvd.

2016: Key financial model takeaways

- The full cost of the draft 2016 Implementation Project Plan is \$36.9 million.
- The draft plan removes the cost of reconstructing the 84th St. and Normandale Blvd. intersection.
- It removes the special assessment funding associated with the intersection reconstruction.
- It includes the funding for the new I-494 westbound access ramp at East Bush Lake Rd.

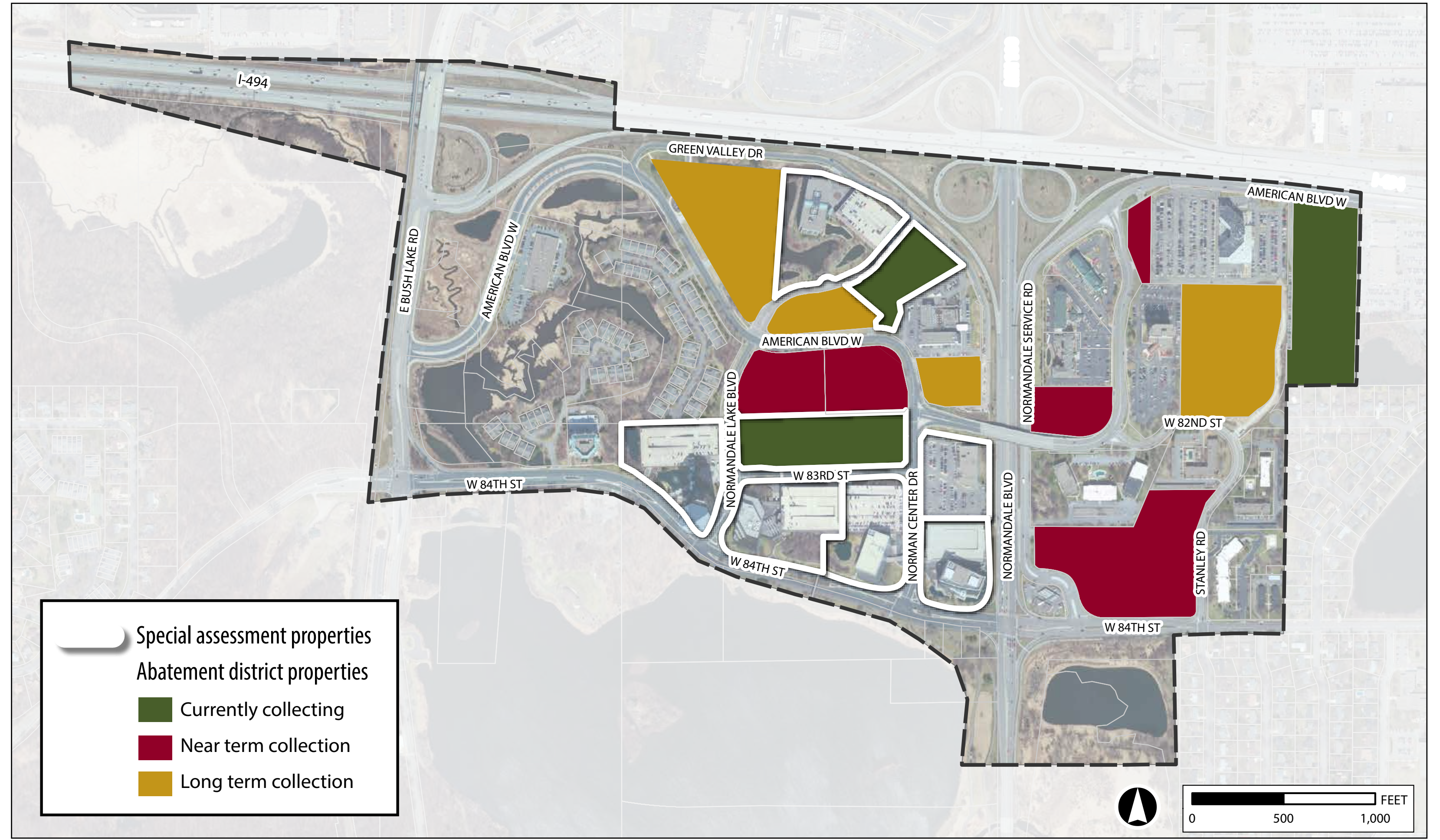
Financial Model: Tax Abatement

The City established the Normandale Lakes Abatement District as an outcome of the 2008 Plan. The abatement district allows the City to earmark a portion of the taxes collected from the district to fund public investments within the district.

The term 'abatement' is misleading, as the tax is not forgiven. The tax is paid normally, but the amount of property tax levied by the City is used to fund the improvements instead of going into the general fund.

While the City has begun collecting abatement revenue, as of 2016 the City has not used the Normandale Lake District Abatement District revenue to fund improvements.

The 2016 Plan Update proposes using \$9 million in abatement funding to complete the list of draft Implementations.

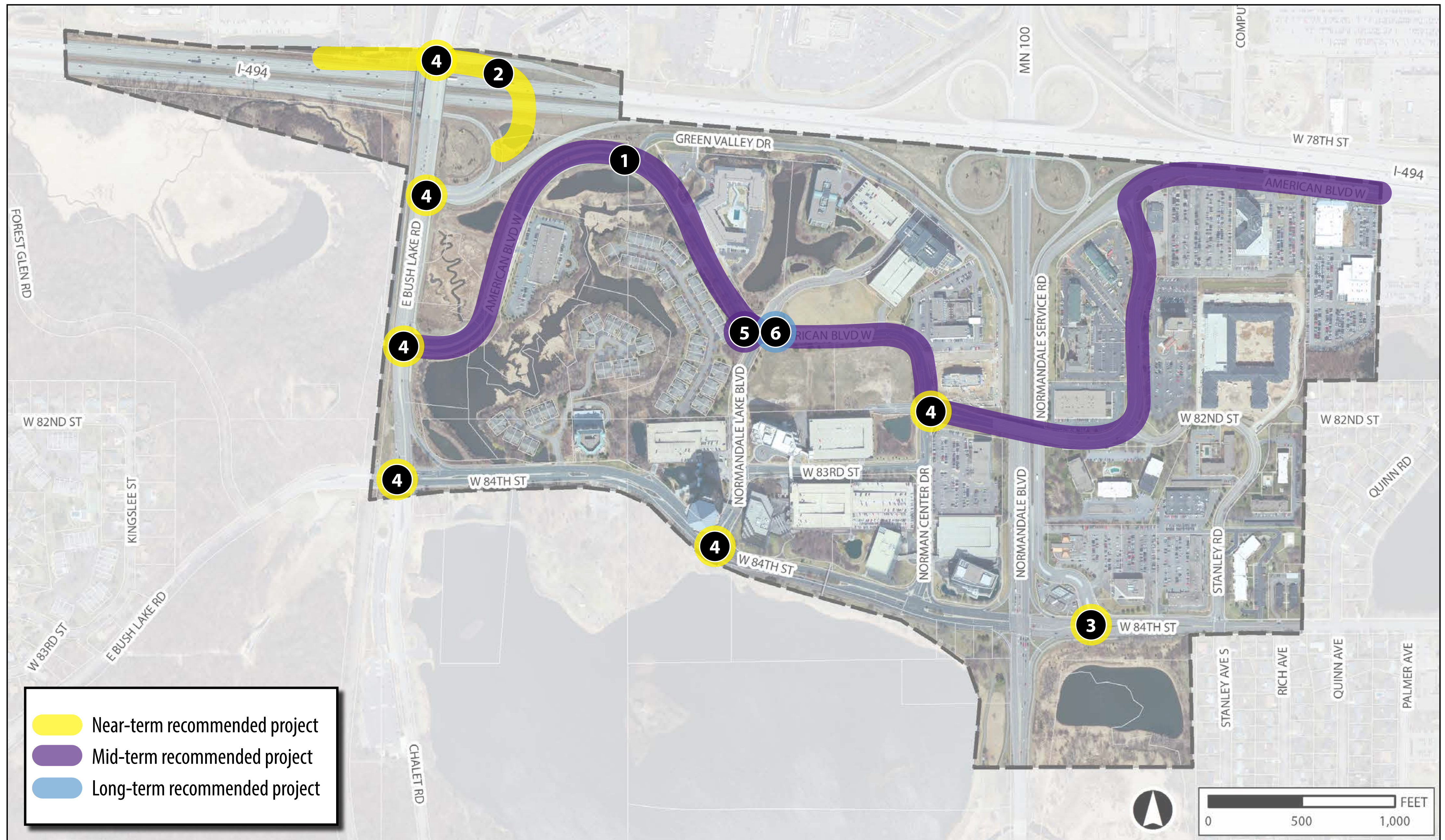


Next Steps

The next steps to complete the 2016 Plan Update are:

- Present draft Implementation Project list and feedback from open house at a City Council study session on May 9, 2016
- Ensure recommended projects meet abatement criteria
- Draft final report
- Public hearings at Planning Commission and City Council to approve draft final report
- Metropolitan Council review
- City Council adopts update

2016 Draft Implementation Projects



No.	Action/Task	Responsible Party	City Cost	Status
Engineering Studies				
1	American Blvd. multi-modal corridor study: Analyze ways to balance walking, biking, and transit needs with vehicle traffic.	Bloomington	\$120,000	Mid-term
Roadway Improvements				
2	Construct access ramp to westbound I-494 at East Bush Lake Rd.	MnDOT, Hennepin County, Bloomington	\$400,000	2017-2018
3	Add left turn restriction signage during peak times at 84th St. and Normandale Service Road	Bloomington	Minimal City Cost	Short-term
4	Signal timing modifications <ul style="list-style-type: none"> • Study on East Bush Lake Rd. between 78th St. and 84th St. • Norman Center Dr. and American Blvd. • Normandale Lake Blvd. and 84th St. • Explore leading pedestrian signals where applicable* 	Bloomington/ Hennepin County	\$12,000	Short-term
5	Extend median south on Normandale Lake Blvd. towards American Blvd. Also move stop signs closer to American Blvd.	Private developer	No City Cost	Mid-term
6	American Blvd. and Normandale Lake Blvd. <ul style="list-style-type: none"> • Install a signal or roundabout • Construct a northbound right turn lane 	Bloomington	\$315,000	Long-term

*NOTE: District-wide improvement. Not shown on maps.

2016 Draft Implementation Projects



No.	Action/Task	Responsible Party	City Cost	Status
Transitway Enhancements				
7	American Blvd. arterial BRT	Metro Transit	TBD	Long-term
Bicycle and Pedestrian Projects				
8	84th St. and Normandale Blvd. pedestrian crossing improvements (i.e. north side of 84th street, at grade crossing over Normandale Blvd.) <ul style="list-style-type: none"> Install sidewalk on northwest corner of Normandale Blvd. and 84th St. Install new ramps and pedestrian actuated signals to meet ADA standards Remove median nose 	Bloomington	\$50,000	Short-term
9	Rehabilitate existing abutments on pedestrian bridge over 84th St.	Bloomington	\$350,000	Short-term
10*	Perform baseline pedestrian and bicycle counts	Bloomington	Part of City's annual budget	Short-term
11	East Bush Lake Rd. bicycle and pedestrian connection (from 84th Street to 78th Street)	Hennepin County	\$1,500,000	Short-term
12	Work with Hennepin County to study pedestrian crossing and other potential streetscape improvements to enhance the pedestrian realm at 84th St. and Normandale Blvd.	Bloomington, Hennepin County	\$35,000	Mid-term
13	Improve sidewalk/trail on American Blvd. bridge over Normandale Blvd.	Bloomington	TBD	Mid-term
14*	Alternative Transportation Plan recommendations and regional trails	Bloomington and regional partners	TBD	Long-term
Streetscape Enhancements				
15*	Update aerial photos on all map signage	Bloomington	\$7,000	Short-term
16	Improved landscaping at 84th St. and Normandale Blvd.	Bloomington	\$8,000	Short-term
17*	Fill in sidewalk gaps	Private developer	No City Cost	As development occurs
18*	Design and construct mid-term urban design (trees, lighting, sidewalks, planted medians)	Bloomington	TBD	Mid-term/Long-term

*NOTE: District-wide improvement. Not shown on maps.

2016 Draft Implementation Projects



No.	Action/Task	Responsible Party	City Cost	Status
Utility Improvements				
19	Metropolitan Council Environmental Services Lift station	Metropolitan Council	No City Cost	2017-2018
20	Metropolitan Council Environmental Services interceptor improvements	Metropolitan Council	No City Cost	Short-term
21	Increase watermain from 6" to 8" under 82nd St. between bridge and Luxembourg apartments	Bloomington	\$600,000	Short-term
22	Add 160' watermain connection near Luxembourg apartments	Bloomington	\$85,000	Short-term
23	Increase sanitary sewer from 16" to 18" under 84th St. between East Bush Lake Rd. and Normandale condos	Bloomington	\$1,400,000	Short-term
24	Increase sanitary sewer from 10" to 12" and 12" to 15" under 84th St. between Norman Center Dr. and Stanley Rd.	Bloomington	\$1,800,000	Short-term
25	Chalet lift station pumps	Bloomington	TBD	Mid-term
Stormwater Management				
26	Normandale Lake Water Quality improvement project	Nine Mile Creek Watershed District	No City Cost	Fall 2016-Winter 2017
27*	Update City's Comprehensive Surface Water Management Plan to include Low Impact Design (LID) techniques and criteria.	Bloomington	Citywide plan	2016-2017

*NOTE: District-wide improvement. Not shown on maps.