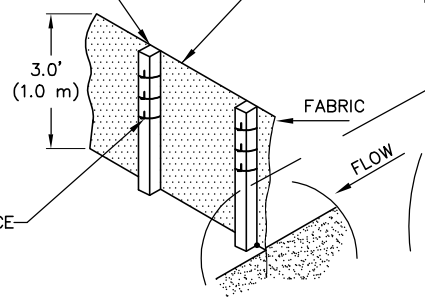
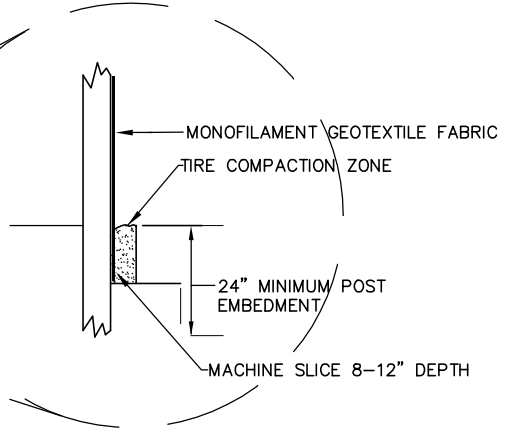


STEEL FENCE POST (T-POST)
 MINIMUM 5' LONG AND 6"
 MAXIMUM SPACING IN GENERAL
 APPLICATIONS AND 4' MAXIMUM
 FOR DITCH CHECKS

ATTACH FABRIC TO POST
 WITH A MINIMUM 3 ZIP TIES
 (50 LB TENSILE) PER POST
 IN TOP 8" OF FABRIC WITH
 HOLES SPACED A MINIMUM OF
 1" APART



POST NOTCHES TO FACE
 AWAY FROM FABRIC



608 - SILT FENCE - MACHINE SLICED
 608 - Silt Fen (MACHINE SLICED).dwg 5/2015

H:\Cad_Cmn_Details Updated\0 - EROSION\608 - Silt Fen (MACHINE SLICED)



1700 W 98TH ST.
 BLOOMINGTON MN 55431
 PHONE (952) 563-8700

ENGINEERING DIVISION
PUBLIC WORKS DEPARTMENT

PLATE NAME:

608 - Silt Fen (MACHINE SLICED)

LAST REVISED: 5/15/2015

LAST REVISED BY: KBO