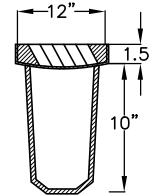
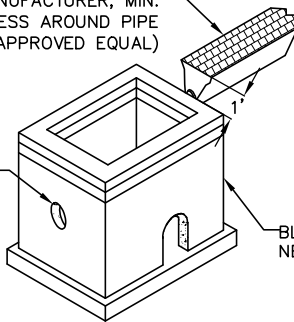


NEENAH R-4996-C HD SELF-FORMING
TRENCH DRAIN W/ TYLE "L" GRATE, 8"
END OUTLET STYLE, 8" DRAIN PIPE AS
RECOMMENDED BY MANUFACTURER, MIN.
6" CONCRETE THICKNESS AROUND PIPE
AND TRENCH DRAIN (OR APPROVED EQUAL)

CAST-IN-PLACE KNOCK
OUT FOR 8" DRAIN PIPE



TRENCH DRAIN
CROSS-SECTION

BLOOMINGTON STD. CATCHBASIN, W/
NEENAH R-3290-A FRAME & CASTING

207 - STD CB (W-TRENCH DRAIN)

207 - STD CB (W-TRENCH DRAIN).DWG 9/2016

H:\Cad_Comn\Details Updated\0 - 200 - STORM complete\207 - Std CB (w-Trench Drain)



**ENGINEERING DIVISION
PUBLIC WORKS DEPARTMENT**

PLATE NAME:

207 - Std CB (w-Trench Drain)

LAST REVISED: 9/14/2016

LAST REVISED BY: KBO