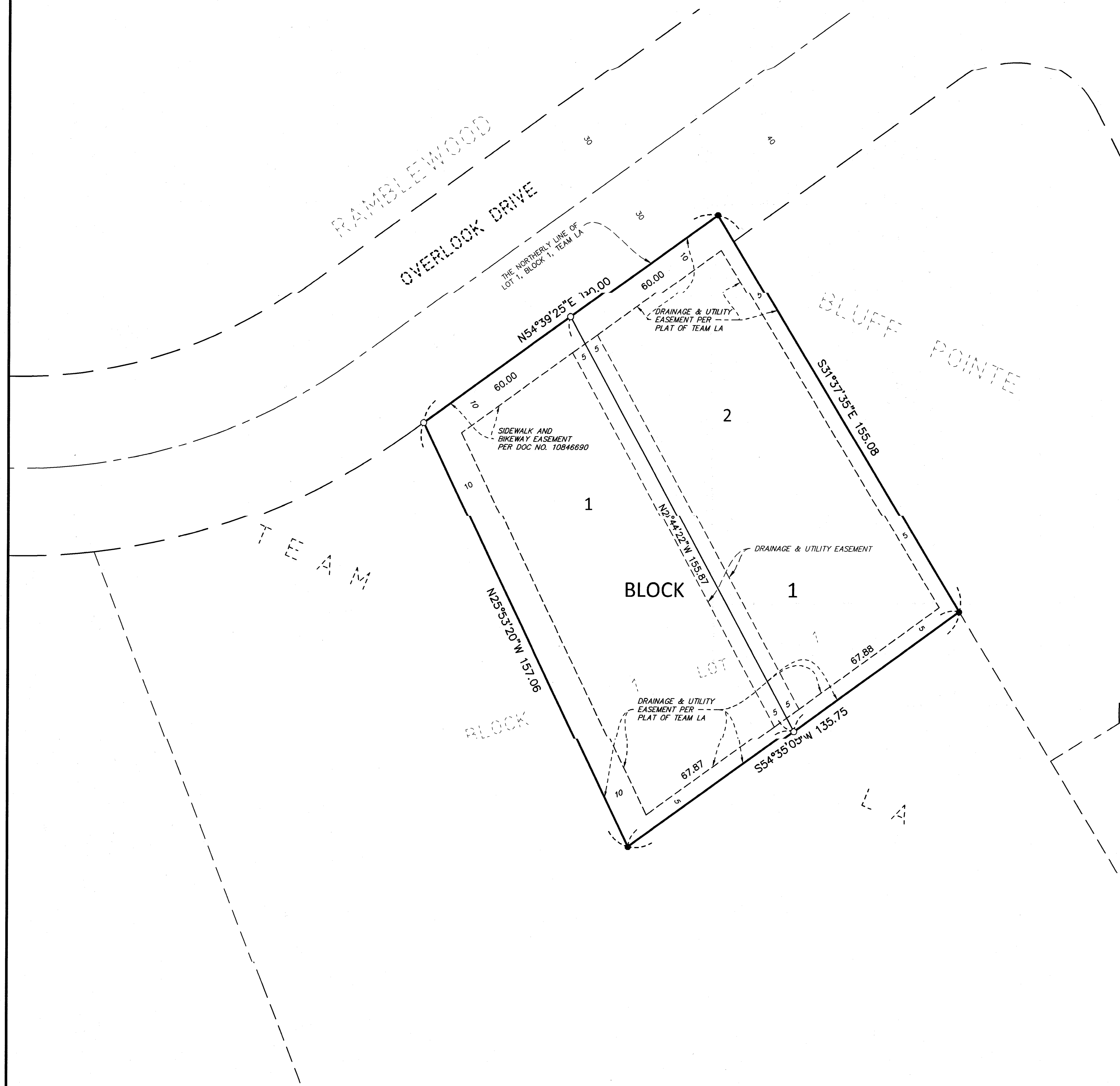


# GOPHER OUTLOOK

C.R. DOC. NO. \_\_\_\_\_



KNOW ALL PERSONS BY THESE PRESENTS: That 2915 Overlook, LLC, a Minnesota limited liability company, owner of the following described property:

Has caused the same to be surveyed and platted as GOPHER OUTLOOK and does hereby dedicate to the public for public use the drainage and utility easements as created by this plat.

In witness whereof said 2915 Overlook, LLC, a Minnesota limited liability company has caused these presents to be signed by its proper officer this 19<sup>th</sup> day of September, 2023.

2915 Overlook, LLC

SIGNED: [Signature]

By: [Signature], as Principal

STATE OF MINNESOTA  
COUNTY OF Hennepin

This instrument was acknowledged before me this 19<sup>th</sup> day of September, 2023, by [Signature], Principal, of 2915 Overlook, LLC, a Minnesota limited liability company, on behalf of the company.

[Signature]  
Signature

[Signature]  
Notary Printed Name

Notary Public, Hennepin County, Minnesota  
My Commission Expires 1-31-2028

### SURVEYOR'S CERTIFICATE

I, Mark R. Salo, do hereby certify that this plat was prepared by me or under my direct supervision; that I am a duly Licensed Land Surveyor in the State of Minnesota; that this plat is a correct representation of the boundary survey; that all mathematical data and labels are correctly designated on this plat; that all monuments depicted on this plat have been, or will be correctly set within one year; that all water boundaries and wet lands, as defined in Minnesota Statutes, Section 505.01, Subd. 3, as of the date of this certificate are shown and labeled on this plat; and all public ways are shown and labeled on this plat.

[Signature]  
Date

[Signature]  
Mark R. Salo, Licensed Land Surveyor,  
Minnesota License No. 43933

STATE OF MINNESOTA  
COUNTY OF Hennepin

This instrument was acknowledged before me this 20<sup>th</sup> day of August, 2023, by Mark R. Salo.

[Signature]  
Signature

[Signature]  
Notary Printed Name

Notary Public, Hennepin County, Minnesota  
My Commission Expires June 30, 2026

### CITY COUNCIL, CITY OF BLOOMINGTON, MINNESOTA

This plat of GOPHER OUTLOOK was approved and accepted by the City Council of the City of Bloomington, Minnesota at a regular meeting thereof held this 26<sup>th</sup> day of August, 2023, and said plat is in compliance with the provisions of Minnesota Statutes, Section 505.03, Subd. 2.

City Council, City of Bloomington, Minnesota

[Signature], Mayor  
[Signature], City Manager

### COUNTY AUDITOR, COUNTY OF HENNEPIN, MINNESOTA

I hereby certify that taxes payable in 20   and prior years have been paid for land described on this plat, dated this    day of   , 20  .

By:   , Deputy  
Daniel Rogan  
County Auditor

### SURVEY DIVISION, COUNTY OF HENNEPIN, MINNESOTA

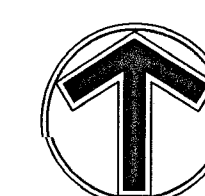
Pursuant to Minnesota Statutes Section 383B.565 (1969), this plat has been reviewed and approved this    day of   , 20  .

By:     
Chris F. Mavis  
Hennepin County Surveyor

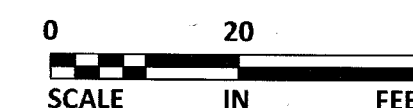
### COUNTY RECORDER, COUNTY OF HENNEPIN, MINNESOTA

I hereby certify that the within plat of GOPHER OUTLOOK was recorded in this office this day of   , 20  , at    o'clock    M.

By:   , Deputy  
Amber Bougie  
County Recorder



NORTH



○ DENOTES A 3/8 INCH BY 15 INCH SET IRON REBAR MONUMENT MARKED BY LICENSE NUMBER 43933

● DENOTES A 1/2 INCH FOUND IRON PIPE MONUMENT MARKED BY LICENSE NUMBER 22440 UNLESS NOTED OTHERWISE

THE NORTHERLY LINE OF LOT 1, BLOCK 1, TEAM LA IS ASSUMED TO HAVE A BEARING OF NORTH 54 DEGREES 39 MINUTES 25 SECONDS EAST