

OXBORO HEIGHTS

R.T. DOC. NO _____
C.R. DOC. NO _____

KNOW ALL PERSONS BY THESE PRESENTS: That Oxboro Heights, Limited Partnership, a Minnesota Limited Partnership, fee owner of the following described property:

Lot 2, Block 1, COLONIAL CAR WASH SECOND ADDITION

AND The West 108 feet of Lot 7 and 8, Block 3, "Oxboro Heath", Hennepin County, Minnesota, except the South 20 feet of Lot 8, Block 3, "Oxboro Heath" (Abstract)

AND OUTLOT A, DANCO ADDITION (Torrens)

Has caused the same to be surveyed and platted as OXBORO HEIGHTS and does hereby dedicate to the public for public use the public way and the drainage and utility easements as created by this plat.

In witness whereof said Oxboro Heights, Limited Partnership, a Minnesota Limited Partnership, has caused these presents to be signed by its proper partner this 28th day of November, 2022.

SIGNED Oxboro Heights, Limited Partnership
By: [Signature] Its: Chief Manager

STATE OF Minnesota, COUNTY OF Hennepin

This instrument was acknowledged before me this 28th day of November, 2022, by Chris Stokka, its Chief Manager of Oxboro Heights, Limited Partnership, a Minnesota Limited Partnership, on behalf of the partnership.

[Signature] Sonja Cella My Commission Expires: 1/31/27
Notary Public, Signature Notary Public, Printed Name

Notary Public Hennepin County, Minnesota

SURVEYORS CERTIFICATE

I Rory L. Synsteliem do hereby certify that this plat was prepared by me or under my direct supervision; that I am a duly Licensed Land Surveyor in the State of Minnesota; that this plat is a correct representation of the boundary survey; that all mathematical data and labels are correctly designated on this plat; that all monuments depicted on this plat have been or will be correctly set within one year; that all water boundaries and wet lands, as defined in Minnesota Statutes, Section 505.01, Subd. 3, as of the date of this certificate are shown and labeled on this plat; and all public ways are shown and labeled on this plat.

Dated this 28th day of November, 2022.

[Signature]
Rory L. Synsteliem, Licensed Land Surveyor
Minnesota License No. 44565

STATE OF MINNESOTA, COUNTY OF Hennepin

This instrument was acknowledged before me this 28th day of November, 2022, by Rory L. Synsteliem.

[Signature] Michael Rawlings My Commission Expires: January 31, 2023
Notary Public, Signature Notary Public, Printed Name

Notary Public Hennepin County, Minnesota

CITY COUNCIL, CITY OF BLOOMINGTON, MINNESOTA

This plat of OXBORO HEIGHTS was approved and accepted by the City Council of the City of Bloomington, Minnesota at a regular meeting thereof held this 3rd day of October, 2022, and said plat is in compliance with the provisions of Minnesota Statutes, Section 505.03, Subd. 2.

City Council, City of Bloomington, Minnesota

By: Tim Bause, Mayor By: [Signature], City Manager

RESIDENT AND REAL ESTATE SERVICES, Hennepin County, Minnesota

I hereby certify that taxes payable in 20 and prior years have been paid for land described on this plat, dated this day of , 20 .

Daniel Rogan, County Auditor

By: , Deputy

SURVEY DIVISION, Hennepin County, Minnesota

Pursuant to Minnesota Statutes Section 383B.565 (1969), this plat has been approved this day of , 20 .

Chris F. Mavis, County Surveyor

By:

REGISTRAR OF TITLES, Hennepin County, Minnesota

I hereby certify that the within plat of OXBORO HEIGHTS was filed in this office this day of , 20 , at O'Clock M.

Amber Bougie, Registrar of Titles

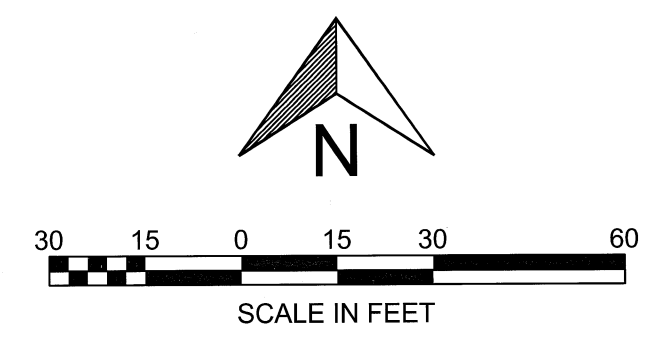
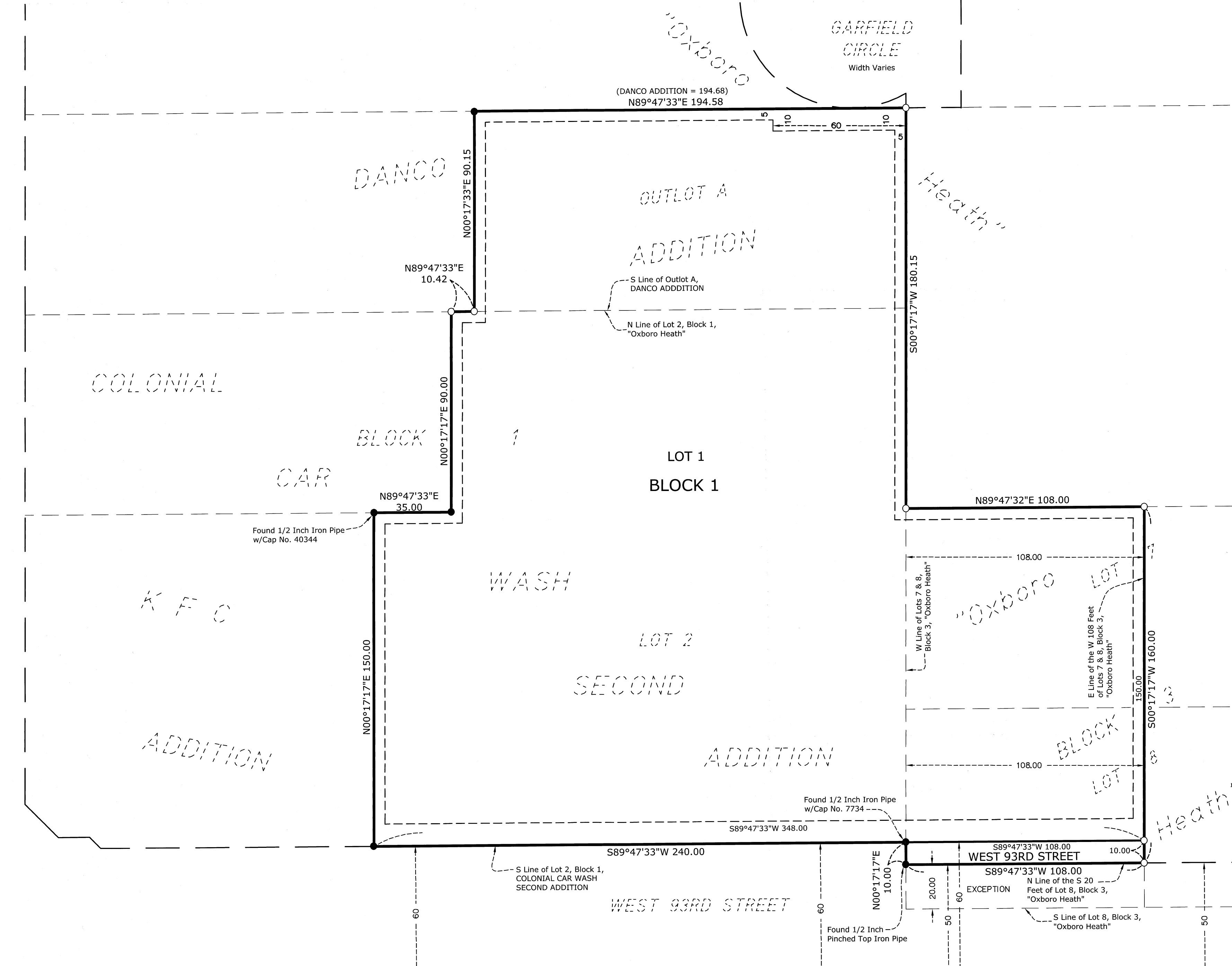
By: , Deputy

COUNTY RECORDER, Hennepin County, Minnesota

I hereby certify that the within plat of OXBORO HEIGHTS was recorded in this office this day of , 20 , at O'Clock M.

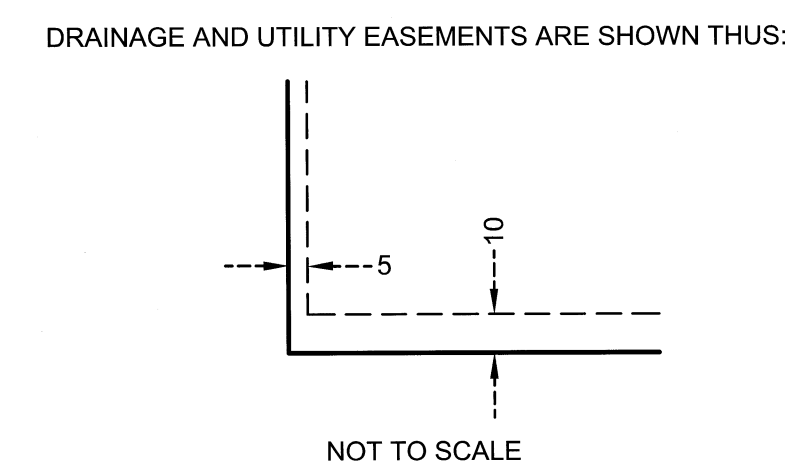
Amber Bougie, County Recorder

By: , Deputy



Bearings are based on the South line of Lot 2, Block 1, COLONIAL CAR WASH SECOND ADDITION having an assumed bearing of S 89°47'33\"/>

- Found 1/2 Inch Iron Pipe (unless otherwise noted)
- 1/2 inch by 14 inch Iron Rebar Set Marked "RLS 44565"
- (DANCO ADDITION =) Denotes a Record Measurement per the Plat of DANCO ADDITION



Being 5 feet in width and adjoining lot lines, unless otherwise indicated, and being 10 feet in width and adjoining right of way lines unless otherwise indicated, as shown on this plat.