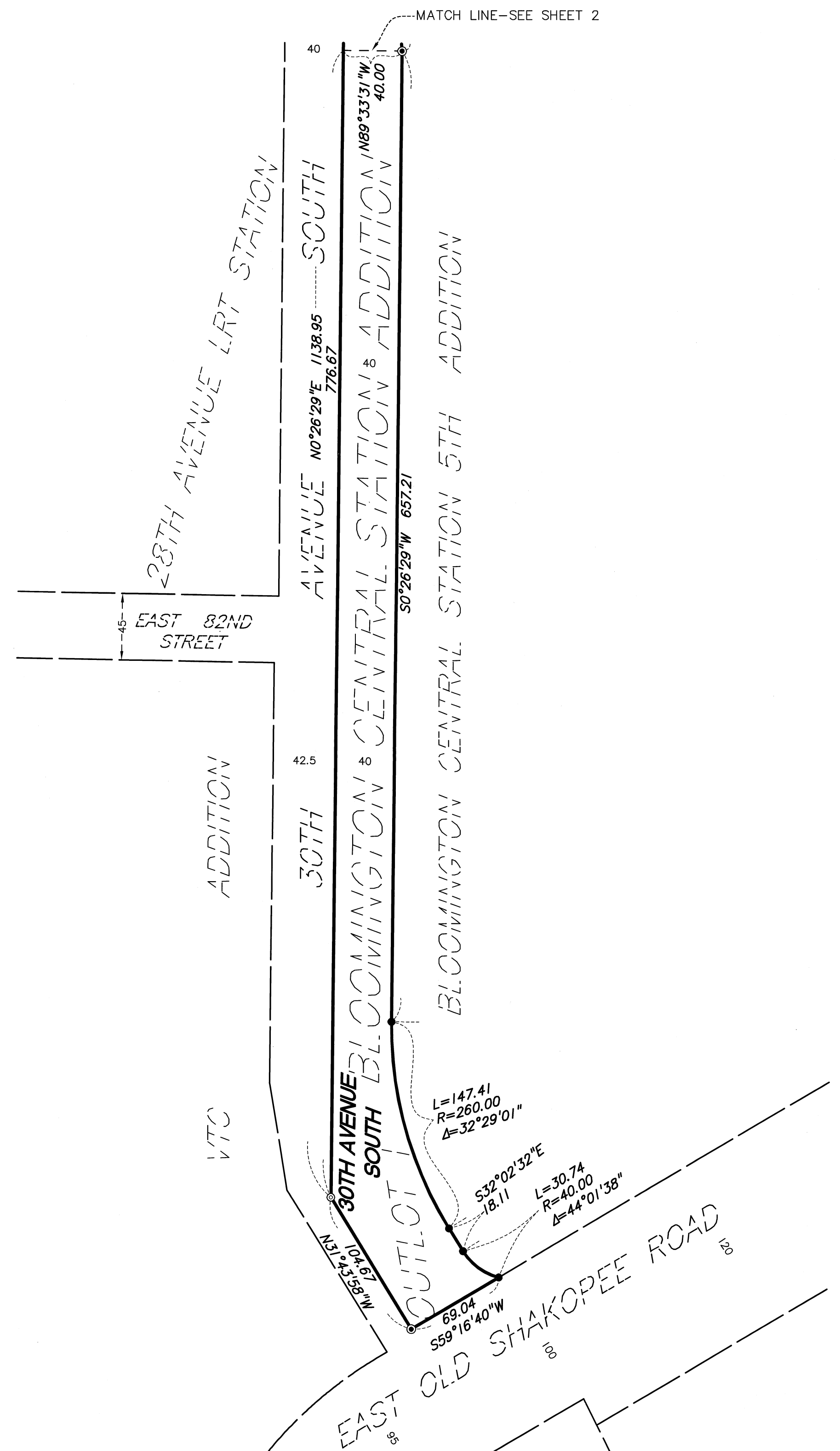


BLOOMINGTON CENTRAL STATION 8TH ADDITION

C.R. DOC. NO. _____



KNOW ALL PERSONS BY THESE PRESENTS: That BCS Management, LLC, a Minnesota limited liability company, owner of the following described property:

OUTLOT I, BLOOMINGTON CENTRAL STATION ADDITION.

and

OUTLOT K, BLOOMINGTON CENTRAL STATION 2ND ADDITION.

And that BCS GD West, LLC, a Minnesota limited liability company, owner of the following described property:

OUTLOT V, BLOOMINGTON CENTRAL STATION 2ND ADDITION.

And that HOTEL BLOOMINGTON 3200 E 81ST, LLC, a Delaware limited liability company, owner of the following described property:

Lot I, Block I, BLOOMINGTON CENTRAL STATION 3RD ADDITION.

and

OUTLOT Q, BLOOMINGTON CENTRAL STATION 2ND ADDITION.

Have caused the same to be surveyed and platted as BLOOMINGTON CENTRAL STATION 8TH ADDITION and do hereby dedicate to the public for public use the public way and the drainage and utility easements as created by this plat.

In witness whereof said BCS Management, LLC, a Minnesota limited liability company, has caused these presents to be signed by its proper officer this 27 day of DECEMBER, 2022.

SIGNED: BCS Management, LLC, a Minnesota limited liability company

By: James McLaughlin, its PRESIDENT

STATE OF Minnesota
COUNTY OF Ramsay

This instrument was acknowledged before me this 27 day of December, 2022 by Thomas McLaughlin the PRESIDENT of BCS Management, LLC, a Minnesota limited liability company, on behalf of the company.

Anne McCellan
Signature

Anne McCellan
Notary Printed Name

Notary Public, Minnesota County, Ramsay

My Commission Expires 1-31-2025

In witness whereof said BCS GD West, LLC, a Minnesota limited liability company, has caused these presents to be signed by its proper officer this 27 day of DECEMBER, 2022.

SIGNED: BCS GD WEST, LLC, a Minnesota limited liability company

By: James McLaughlin, its PRESIDENT

STATE OF Minnesota
COUNTY OF Ramsay

This instrument was acknowledged before me this 27 day of December, 2022 by Thomas McLaughlin the PRESIDENT of BCS GD WEST, LLC, a Minnesota limited liability company, on behalf of the company.

Anne McCellan
Signature

Anne McCellan
Notary Printed Name

Notary Public, Minnesota County, Ramsay

My Commission Expires 1-31-2025

In witness whereof said HOTEL BLOOMINGTON 3200 E 81ST, LLC, a Delaware limited liability company, has caused these presents to be signed by its proper officer this 22 day of December, 2022.

SIGNED: HOTEL BLOOMINGTON 3200 E 81ST, LLC, a Delaware limited liability company
By Bloomington Loan Venture, LLC, a Delaware limited liability company, its Sole Member
By Hotel Bloomington MN Investment, LLC, a Delaware limited liability company, its manager
By SHG Bloomington, LLC, a Delaware limited liability company, its manager

By: Deseryl Schulte, its Manager

STATE OF Kentucky
COUNTY OF Jefferson

This instrument was acknowledged before me this 22nd day of December, 2022 by Deseryl Schulte the Manager of SHG Bloomington, LLC, a Delaware limited liability company, the manager of Hotel Bloomington MN Investment, LLC, a Delaware limited liability company, the manager of Bloomington Loan Venture, LLC, a Delaware limited liability company, the Sole Member of HOTEL BLOOMINGTON 3200 E 81ST, LLC, a Delaware limited liability company, on behalf of the company.

Eileen Nelson Smith
Signature

Eileen Nelson Smith
Notary Printed Name

Notary Public, Jefferson County, Kentucky

My Commission Expires 10/4/2026

I, Leonard F. Carlson, do hereby certify that this plat was prepared by me or under my direct supervision; that I am a duly Licensed Land Surveyor in the State of Minnesota; that this plat is a correct representation of the boundary survey; that all mathematical data and labels are correctly designated on this plat; that all monuments depicted on this plat have been or will be correctly set within one year; that all water boundaries and wet lands as defined in Minnesota Statutes, Section 505.01, Subd. 3, as of the date of this certificate are shown and labeled on this plat; and all public ways are shown and labeled on this plat.

Dated this 19th day of December, 2022.

Leonard F. Carlson
Signature

Leonard F. Carlson, Licensed Land Surveyor
Minnesota License No. 44890

STATE OF MINNESOTA
COUNTY OF HENNEPIN

This instrument was acknowledged before me this 19th day of December, 2022 by Leonard F. Carlson.

Mavis J. Way
Signature

Mavis J. Way
Notary Printed Name

Notary Public, Minnesota
My Commission Expires January 31, 2025

CITY COUNCIL, CITY OF BLOOMINGTON, MINNESOTA

This plat of BLOOMINGTON CENTRAL STATION 8TH ADDITION was approved and accepted by the City Council of The City of Bloomington, Minnesota, at a regular meeting thereof held this 5th day of December, 2022 and said plat is in compliance with the provisions of Minnesota Statutes, Section 505.03, Subd. 2.

CITY COUNCIL, CITY OF BLOOMINGTON, MINNESOTA

By Tom Burke Mayor By [Signature] City Manager

RESIDENT AND REAL ESTATE SERVICES, Hennepin County, Minnesota

I hereby certify that taxes payable in 20 and prior years have been paid for land described on this plat, dated this day of , 20 .

Daniel Rogan, County Auditor By Deputy

SURVEY DIVISION, Hennepin County, Minnesota

Pursuant to Minnesota Statutes, Sec. 383B.565 (1969), this plat has been approved this day of , 20 .

Chris F. Mavis, County Surveyor By

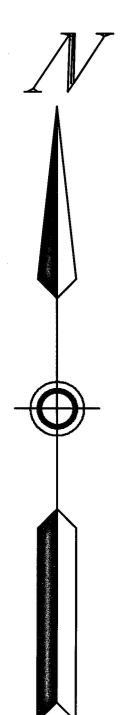
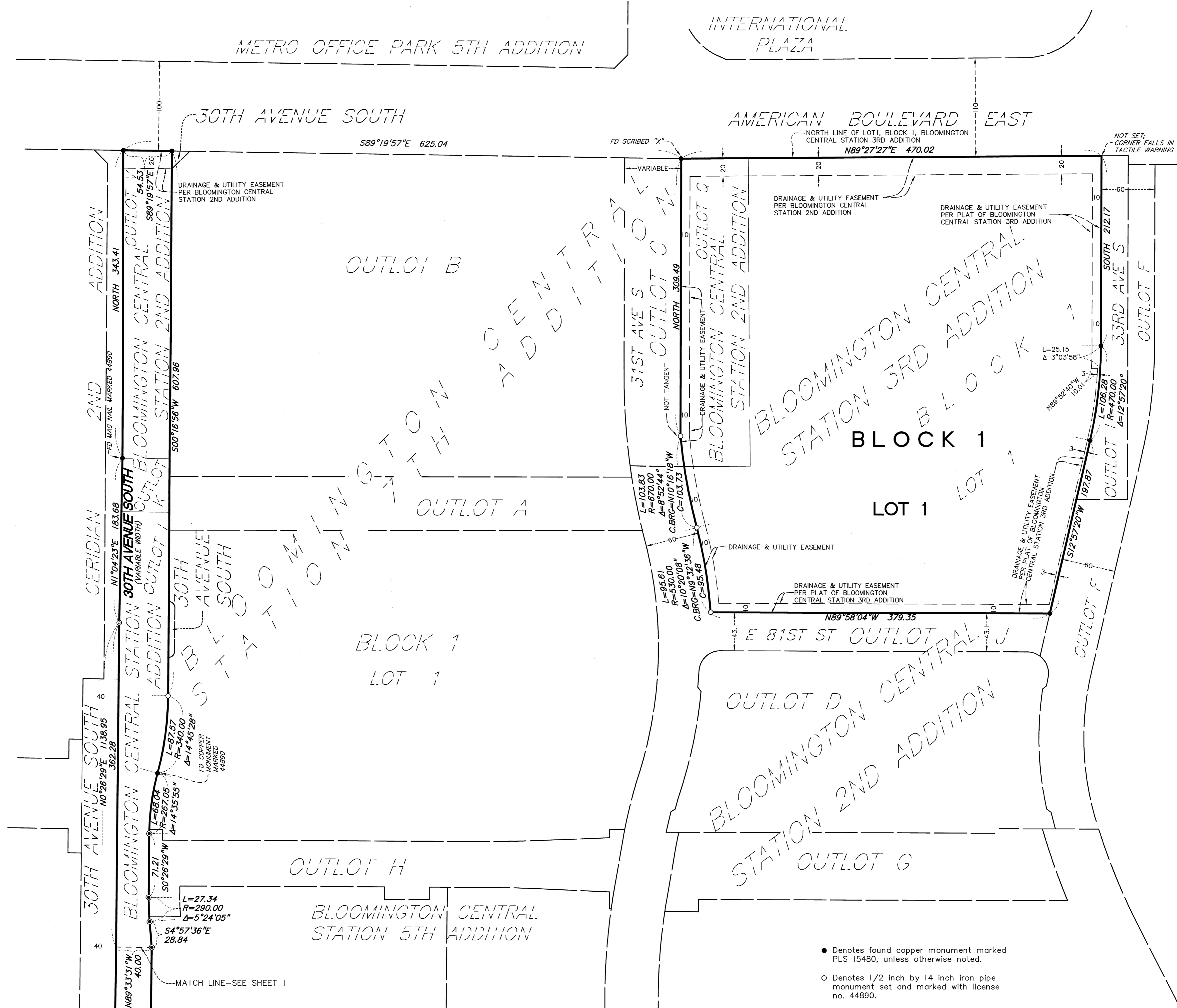
COUNTY RECORDER, Hennepin County, Minnesota

I hereby certify that the within plat of BLOOMINGTON CENTRAL STATION 8TH ADDITION was recorded in this office this day of , 20 at o'clock M.

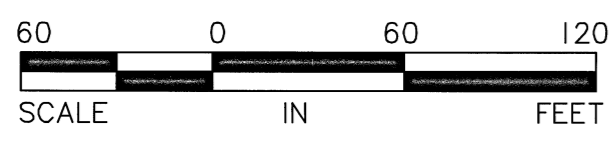
Amber Bougie, County Recorder By Deputy

BLOOMINGTON CENTRAL STATION 8TH ADDITION

C.R. DOC. NO. _____



For the purposes of this plat, the north line of Lot 1, Block 1, BLOOMINGTON CENTRAL STATION 3RD ADDITION is assumed to have a bearing of N89°27'27"E.



- Denotes found copper monument marked PLS 15480, unless otherwise noted.
- Denotes 1/2 inch by 14 inch iron pipe monument set and marked with license no. 44890.
- ⊙ Denotes 1.17 inch diameter copper magnetized marker with disc cap affixed LS-44890 set in concrete.
- ⊙ Denotes set mag nail with brass disc marked PLS 44890