

BLOOMINGTON BRIEFING



DECEMBER 2022

PAGE 3

PAGE 5

PAGE 6

PAGE 7

Get outside this winter. Bloomington has more than 50 miles of trails for walkers and bikers to enjoy. The trail above runs along Nine Mile Creek in Moir Park, 10320 Morgan Avenue South.

COUNCIL TO VOTE ON FINAL 2023 BUDGET

The City Council will vote to adopt a final 2023 budget this month. In September, the Council approved a preliminary 2023 property tax levy increase of 10.5%. The preliminary tax levy can be reduced, but not increased, before final adoption. The primary factor driving this increase is a significant need for public safety spending. The Police and Fire Departments account for 49% of the City's 2022 tax levy, and the proposed 2023 levy increases that percentage.

This levy would fund 69% of the City's 2023 general fund budget. The remainder of the proposed budget would be supported by lodging and admission taxes, license and permit fees, grants and program revenues.

The City Council will hold a public budget hearing Monday, December 5, 6:30 p.m., at Bloomington Civic Plaza, 1800 West Old Shakopee Road. Instructions on how to participate in person or by phone are available online at blm.mn/cc-1205.

For more information, including links to Council presentations on the budget, the notes from various themed budget community outreach events and related Council Minute segments, visit blm.mn/budget.

CITY BEGINS TRIAL OF MONTHLY BULKY ITEM COLLECTION PROGRAM

The City is partnering with Better Futures Minnesota to collect certain bulky items at the curb for reuse and recycling. The goal of the program is to reduce the number of bulky items that end up going to a landfill.

This new service is part of the City's bulky item management plan that was approved by City Council in 2021. The plan includes a transition to Curbside Cleanup being offered every other year. **There will be no Curbside Cleanup in spring 2023.**

The City started a pilot of a monthly bulky item collection service in November. The pilot involves 4,000 homes. The lessons learned throughout the pilot program will be used to make the service better before it is rolled out citywide during the first half of next year.

During the pilot, households in the sample area will be able to schedule a monthly pickup of reusable and recyclable items. Items will be picked up the first full week of each month on the regular garbage and recycling day at no extra charge. This service is included in the monthly bulky item management fee (formerly called Curbside Cleanup fee) on the residential utility bill.

For more information and a map of the homes included in the pilot area, visit the City's website at blm.mn/bulkies.

WHAT IS BETTER FUTURES MINNESOTA?

It's an organization that supports healthy communities by serving men who have had a history of incarceration, homelessness and poverty. They create and support environmentally sustainable practices through their work in deconstruction, recycling, repurposing and reusing materials from appliances, homes and buildings. For more information, visit the website betterfuturesminnesota.com.



FIND US ONLINE
BLOOMINGTON [MN.gov](https://mn.gov)



Presort Std
U.S. Postage
PAID
Twin Cities, MN
Permit
#2293

CITY OF BLOOMINGTON
1800 WEST OLD SHAKOPEE ROAD
BLOOMINGTON MN 55431-3027

ECRWSS
POSTAL CUSTOMER



MAYOR’S MEMO

POTENTIAL CHANGES AT BLOOMINGTON CENTER FOR THE ARTS

By Mayor Tim Busse

As I’m sure you know, Artistry has been an important partner with the City in the area of performing arts, visual arts, arts education and creative placemaking. Artistry provides most box office services for the resident arts organizations that use the Bloomington Center for the Arts, produces plays in the Schneider Theater, curates the Greenberg and Atrium Galleries and provides arts education programming in Bloomington and around the Twin Cities. Like many arts organizations, Artistry has struggled financially coming out of COVID-19.

Artistry’s revenues have historically been generated from theater production ticket sales—typically around 60% of revenue is tied to Schneider Theater productions. No shows were staged during the pandemic and the 2021 – 2022 season was cut short. When shows did run, attendance was only 40% and revenues only amounted for 30% of the budget. The financial impacts of the pandemic were significant. The Artistry chair noted that poor management and board oversight made a bad situation worse. As a result, Artistry is facing a sizable operating shortfall and has exhausted its reserves to absorb losses.

At its September 19 meeting, the City Council approved a \$150,000 grant for Artistry. As a condition of the grant, Artistry was asked to present a report to Council outlining the actions taken to date and its business plan for the coming year.

In October, after public comment and a thoughtful discussion, the Council voted down a proposal to provide Artistry a \$750,000 loan. More than a dozen people spoke during the public comment period—both for and against the loan. I and others on the Council received many emails from residents, again, both for and against. In our discussion, every member of the Council expressed their strong support for the arts. I know I did. I have been a vocal supporter of the arts not only as an economic driver—prepandemic the arts had a \$12 million local economic impact—but also as an important piece of what makes a city special. I often say a great city has great art.

In the end, the Council decided it could not support a loan to Artistry because there were too many unanswered questions about its business plan, development plan and a viable path forward that would point confidently toward the success of the organization. There was also discussion about equity regarding our other arts organizations, past financial support of Artistry and the fact that \$750,000 is a significant amount of money.

The next steps specific to Artistry are up to its board of directors. As I said earlier, a great city has great art. We still have great art here in Bloomington. I won’t deny it—our arts ecosystem in Bloomington will be different if Artistry is not able to get through its recent troubles. But art in Bloomington will still be strong. Like all arts organizations, the Bloomington arts organizations I listed above in the sidebar were financially impacted by the pandemic. Support them if you are able. Buy a ticket and attend one of their performances soon. I know they’d love to see you.



This rendering shows one possibility of what an Expo site in Bloomington might look like.

BLOOMINGTON COULD HOST EXPO 2027

Bloomington is one of five sites around the world being considered as a location for Expo 2027. An Expo is similar to a World’s Fair, which is used by countries to showcase and unveil their most remarkable achievements of today and tomorrow. The city was selected as the official bid location for the United States last year with the theme of “Healthy People, Healthy Planet.” The Bureau of International Expositions will make its final decision about the location of Expo 2027 in June 2023.

If the specialized expo is held in Bloomington, the economic impact could be greater than \$2 billion. The bid committee expects more than 7 million unique visitors to attend. This would generate direct general fund revenue through the admissions and lodging taxes collected during the three-month-long event that would benefit residents. Building the infrastructure needed for the event would also generate jobs in Bloomington.

The international campaign is a joint effort between the Expo 2027 bid committee and the United States federal government. Minnesota USA Expo 2027 is an independent nonprofit organization established for the purpose of coordinating the bid process and, if successful, planning and hosting the event. The organization is not affiliated with or governed by the City of Bloomington. Mayor Tim Busse and City Manager Jamie Verbrugge serve as ex-officio members of the Minnesota USA Expo 2027 board of directors.

BRIEFING

Volume 30, Number 12

The *Briefing*, published monthly by the City of Bloomington, is mailed to residents and businesses. Direct your comments and requests for Braille, larger print or computer file to Communications Administrator Janine Hill, 1800 West Old Shakopee Road, Bloomington MN 55431-3071; PH 952-563-8819; MN Relay 711; FAX 952-563-8715; Email: jhill@BloomingtonMN.gov
Website: BloomingtonMN.gov

BLOOMINGTON CITY COUNCIL



Mayor
Tim Busse
952-563-8782 (w)
952-457-7506 (c)
tbusse@BloomingtonMN.gov

Councilmember At Large
Nathan Coulter
952-239-0531
ncoulter@BloomingtonMN.gov



Councilmember At Large
Jenna Carter
612-284-8751
jcarter@BloomingtonMN.gov

Councilmember District I
Dwayne Lowman
952-270-2377
dlowman@BloomingtonMN.gov



Councilmember District II
Shawn Nelson
952-479-0471
snelson@BloomingtonMN.gov

Councilmember District III
Lona Dallessandro
612-231-6824
ldallessandro@BloomingtonMN.gov



Councilmember District IV
Patrick Martin
952-454-6657
pmartin@BloomingtonMN.gov

Elected officials presented for informational purposes.

COUNCILMEMBERS

council@BloomingtonMN.gov

EXECUTIVE STAFF

Jamie Verbrugge, <i>City Manager</i>	952-563-8780
citymanager@BloomingtonMN.gov	
Michael Sable, <i>Assistant City Manager</i>	952-563-8780
citymanager@BloomingtonMN.gov	
Karla Henderson, <i>Community Development</i>	952-563-8947
communitydevelopment@BloomingtonMN.gov	
Diann Kirby, <i>Community Services</i>	952-563-8717
communityservices@BloomingtonMN.gov	
Lori Economy-Scholler, <i>Finance</i>	952-563-8791
finance@BloomingtonMN.gov	
Ulie Seal, <i>Fire</i>	952-563-4801
fire@BloomingtonMN.gov	
Amy Cheney, <i>Information Technology</i>	952-563-4885
it@BloomingtonMN.gov	
Melissa Manderschied, <i>Legal</i>	952-563-8753
legal@BloomingtonMN.gov	
Ann Kattreh, <i>Parks and Recreation</i>	952-563-8877
parksrec@BloomingtonMN.gov	
Booker T. Hodges, <i>Police</i>	952-563-4900
police@BloomingtonMN.gov	
Karl Keel, <i>Public Works</i>	952-563-8731
publicworks@BloomingtonMN.gov	
General phone number	952-563-8700

The City of Bloomington does not discriminate against or deny the benefits of its services, programs, or activities to a qualified person because of a disability. The City will provide a reasonable accommodation or modify its policies and programs to allow people with disabilities to participate in all City services, programs, activities, and employment. The law does not require the City to take any action that would fundamentally alter the nature of its programs or services, or impose an undue financial or administrative burden on the City. To make a request for a reasonable accommodation, ask for more information, or to file a complaint, contact the Community Outreach and Engagement Division, City of Bloomington, 1800 West Old Shakopee Road, Bloomington, MN 55431-3027; 952-563-8733, MN Relay 711.



SICK OPENS NEW CAMPUS IN SOUTH LOOP

SICK Sensors officially opened its new North American headquarters in Bloomington’s South Loop with a ribbon cutting in November. The new building is a 138,000-square-foot space used for production and logistics. SICK designs, builds and sells intelligent sensors that are used for industrial applications around the world. In 2018, SICK was looking to consolidate its Bloomington and Savage locations. The Port Authority suggested using a 14-acre, City-owned site in South Loop. Crews broke ground on the new campus in 2021. In the coming years, the company has plans to grow in South Loop. The second phase of development will include a multilevel office complex and customer resource center to be completed by the year 2026.

TARA OWENS RECEIVES 2022 OMAR BONDERUD AWARD

In a tradition going back to the 1970s, the Human Rights Commission honors individuals and organizations making significant contributions to ensure the human rights of people in Bloomington with the Omar Bonderud Award. This year, the award winner is Bloomington resident Tara Owens, *at right with her daughter.*

Owens has done a lot of work to support children and families in the community. She serves as the chair of the Bloomington Early Childhood Advisory Council, a group of volunteer parents and supporters that promote the goals of the Early Childhood programs offered through Bloomington Public Schools. Her work there includes recruiting 12 new board members and engaging them in program planning, fundraising and advocacy efforts that serve families with children from birth to five years old.

She also leads a group known as Tod Pod. When the first round of the pandemic restrictions began to ease in 2020, Owens was looking for ways she and her two-year-old daughter could get some safely distanced, outdoor social time. She reached out to eight families she knew and asked if they wanted to start meeting weekly at Bloomington parks. Through word of mouth, the group grew from eight families to nearly 275. The group has been described as a “lifeline” by participants.

“Tara has been an invaluable resource to families in Bloomington,” Tod Pod participant Danielle Indovino Crawley, who nominated Tara, said. “The work that Tara is doing is having real impacts to help ensure that the human needs of families are being met—through education, language and literacy, physical play and social connectedness within a community.”

For more information, visit blm.mn/bonderud.



IMPROVING LOCAL INTERSECTIONS

The Pavement Management Program paves the way to smooth driving conditions in Bloomington. The City is committed to providing a cost-effective street maintenance program that ensures more than 340 miles of streets are safe and functional. Here are a few of the improvements made through the PMP this year:

XERXES AVENUE AND 88TH STREET

The City reconstructed this oversize intersection to better fit with the neighborhood context and scale for the local and collector roadways. The improvements provide shorter crossing distances for pedestrians.

XERXES AVENUE AT BROOKSIDE PARK

A new crosswalk and pedestrian access to Brookside Park at this intersection was added to improve neighborhood access to the park. A future project in this area will improve pedestrian crossing safety across West 98th Street at Xerxes Avenue.

QUEEN AVENUE AT OLD SHAKOPEE

The intersection was realigned to improve sight lines at the intersection for drivers turning onto Old Shakopee Road and to shorten the pedestrian crossing distance while walking in this area.

SCHOOL AREA IMPROVEMENTS AT VALLEY VIEW ELEMENTARY

The City worked with Bloomington Public Schools representatives to address safety concerns with some school crossings near Valley View Elementary. One of the improvements included the construction of a curb bump-out at East 88th Street and 3rd Avenue South that will improve visibility of the students and pedestrians crossing.

LOUISIANA AVENUE SPLITTER ISLAND AND TRAFFIC CALMING

As part of a larger neighborhood project, crews installed a splitter island at Louisiana Avenue on the north side of Old Shakopee Road that only allows vehicles to access and exit Louisiana Avenue with a right-in or right-out movement. The neighborhood goals for this roadway were to find a way to reduce cut-through traffic and speeds.

For more information about the program and process for local roadway traffic calming, visit blm.mn/traffic or contact Paul Jarvis at pjarvis@BloomingtonMN.gov.



FREE PUBLIC ART WORKSHOP

Making it Public is a free two-day intensive workshop designed for artists who are interested in exploring and expanding their public-art-making practice. The workshop is facilitated by Forecast Public Art and will take place Saturday and Sunday, January 28 and 29, at Bloomington Civic Plaza, 1800 West Old Shakopee Road. Bloomington residents will be given priority consideration. Space is limited! Register by Tuesday, December 20 at blm.mn/makingitpublic.



SEEKING RESIDENT ADVISORS FOR THE NINE MILE CREEK WATERSHED DISTRICT

The Nine Mile Creek Watershed District is accepting applications to fill positions on its Citizen Advisory Committee in 2023. The CAC is a volunteer advisory group that supports the watershed district in its mission to manage, restore and protect water resources.

As a member of the CAC, you will represent resident interests in water education and outreach, and work with district staff to fulfill the district’s mission. CAC members also review and create educational materials that align with the goal of protecting water resources. You will be a community advocate for issues of concern from the public, learn about water resource issues and management in the district, and provide assistance for community events.

CAC members must live within the district. Applications are due by 5 p.m. Wednesday, January 4, 2023. Learn more and apply at ninemilecreek.org/citizen-advisory-committee.



How to Dispose of Your Christmas Tree

Christmas trees will be collected in 2023 during the weeks of January 2 – 6 and 9 – 13 for a fee of \$11.26 per tree. The trees crews collect will be mulched at a composting facility.

To prepare your tree for pickup, remove all decorations, wires and stands. Set out before 7 a.m. on your collection day, but no earlier than the day before pickup. Keep snow or ice off the tree. No plastic, compostable or other bags should be included.

Christmas trees can be collected outside of the designated weeks at a cost of \$56.29. Call Utility Billing at 952-563-8726 to schedule a bulky item pickup. Visit blm.mn/garbage for information.

Artificial trees cannot be recycled in the City’s recycling program. Public Works suggests residents consider donating artificial trees in good condition to charitable organizations in and around Bloomington.

Visit blm.mn/donate for a list of organizations that accept donations of artificial holiday trees.

Tips for Extra Recycling

Extra recycling piles up quickly during the holidays. After you fill your recycling cart, place extra recyclable materials next to the cart. Cardboard should be flattened and stacked into a pile no larger than three feet wide and one foot tall. Bundle the stacked cardboard with string or twine. If you regularly have extra recycling, you can request a second recycling cart at no cost. As a reminder, recyclables should be placed loose in the recycling cart. Plastic bags, tissue paper and shiny, plastic or foil-lined wrapping paper are not accepted for recycling. For more information, visit blm.mn/recycling.



2023 Solid Waste Collection Calendar

Note: Garbage and organics recycling are collected weekly. Regular recycling is picked up every other week on your regular collection day. Recycling weeks are shown in the calendar below.

January						
S	M	T	W	T	F	S
1	2	3	4	5	6	7
8	9	10	11	12	13	14
15	16	17	18	19	20	21
22	23	24	25	26	27	28
29	30	31				

February						
S	M	T	W	T	F	S
			1	2	3	4
5	6	7	8	9	10	11
12	13	14	15	16	17	18
19	20	21	22	23	24	25
26	27	28				

March						
S	M	T	W	T	F	S
			1	2	3	4
5	6	7	8	9	10	11
12	13	14	15	16	17	18
19	20	21	22	23	24	25
26	27	28	29	30	31	

April						
S	M	T	W	T	F	S
						1
2	3	4	5	6	7	8
9	10	11	12	13	14	15
16	17	18	19	20	21	22
23	24	25	26	27	28	29
30						

May						
S	M	T	W	T	F	S
	1	2	3	4	5	6
7	8	9	10	11	12	13
14	15	16	17	18	19	20
21	22	23	24	25	26	27
28	29	30	31			

June						
S	M	T	W	T	F	S
				1	2	3
4	5	6	7	8	9	10
11	12	13	14	15	16	17
18	19	20	21	22	23	24
25	26	27	28	29	30	

July						
S	M	T	W	T	F	S
						1
2	3	4	5	6	7	8
9	10	11	12	13	14	15
16	17	18	19	20	21	22
23	24	25	26	27	28	29
30	31					

August						
S	M	T	W	T	F	S
		1	2	3	4	5
6	7	8	9	10	11	12
13	14	15	16	17	18	19
20	21	22	23	24	25	26
27	28	29	30	31		

September						
S	M	T	W	T	F	S
					1	2
3	4	5	6	7	8	9
10	11	12	13	14	15	16
17	18	19	20	21	22	23
24	25	26	27	28	29	30

October						
S	M	T	W	T	F	S
1	2	3	4	5	6	7
8	9	10	11	12	13	14
15	16	17	18	19	20	21
22	23	24	25	26	27	28
29	30	31				

November						
S	M	T	W	T	F	S
			1	2	3	4
5	6	7	8	9	10	11
12	13	14	15	16	17	18
19	20	21	22	23	24	25
26	27	28	29	30		

December						
S	M	T	W	T	F	S
					1	2
3	4	5	6	7	8	9
10	11	12	13	14	15	16
17	18	19	20	21	22	23
24	25	26	27	28	29	30
31						

- RECYCLE WEEK
- HOLIDAY TREES PICKED UP FOR A REDUCED FEE
- HOLIDAY; PICKUP IS DELAYED BY ONE DAY

CITY-OBSERVED HOLIDAYS THAT ARE NOT LISTED ON THE CALENDAR DO NOT DELAY COLLECTION

YARD WASTE SEASON*: APRIL 10 – NOVEMBER 25, WEATHER PERMITTING

*SUBSCRIPTION SERVICE, EXTRA CHARGES APPLY

DECEMBER GARBAGE AND RECYCLING SCHEDULE

This year, enjoy your holidays without the worry of forgetting your garbage collection day. Generally, if your collection day occurs on or after a major holiday, your collection will be delayed by one day. If the holiday occurs on Saturday or Sunday, garbage will be collected as usual. This year, Christmas Day and New Year’s Day fall on a Saturday. There will be no delay in collection for the upcoming Christmas and New Year’s Day holidays. For more information, visit blm.mn/garbage.

- RECYCLE WEEK

December 2022						
S	M	T	W	T	F	S
				1	2	3
4	5	6	7	8	9	10
11	12	13	14	15	16	17
18	19	20	21	22	23	24
25	26	27	28	29	30	31



BPD ACCEPTING DONATIONS FOR SANTA COP

The Bloomington Police Department’s Santa Cop program began in 2020 to bring presents and holiday cheer to Bloomington families in need.

“During that time, we determined that several families in our community were unable to provide Christmas gifts for their children,” Crime Prevention Specialist Katie Zerull said. “Working together we can be certain this holiday season will bring cheer and happiness to kids in need.”

The success of the Santa Cop Program is only possible due to the generous support of the community. Donations will stay in your community and help create a memorable holiday season for local children and families.

Residents, businesses and organizations are welcome to donate new, unwrapped toys or gifts as well as monetary donations through December 16, 8 a.m. – 6 p.m., in the lobby of the Bloomington Police Department, 1800 West Old Shakopee Road.

For more information, email SantaCop@Bloomingtonmn.gov.

BPD USES DRONES TO MAKE POLICING SAFER

Technology is evolving rapidly, and the Bloomington Police Department is using drones to keep the community and officers safe and achieve better outcomes. BPD has two commercial off-the-shelf drones and eight drone pilots. A drone is a small aircraft with a camera that is piloted by a person using a controller on the ground.

Since Bloomington is home to the Minneapolis – St. Paul International Airport, the city is considered a Class B air space. That means drones aren’t permitted to fly above 100 feet or 50 feet in some areas. If the situation calls for it, officers communicate with air traffic control to ask permission to fly above that height limit. BPD uses drones to search large spaces for vulnerable adults or missing children.

“When you’re searching a large space like Hyland Park, which is 2,500 acres, it could take hours by foot. To have the ability to use a drone is important. Every second counts in a situation like that,” Officer Chris Wegner, *pictured above*, said. “Drones help create situations that are safer for the community, officers and the general public.”

All BPD drone pilots must have their Part 107 FAA license and complete a 40-hour program that is educational and provides opportunities to practice flying.



BFD75: FIRE DEPARTMENT OPEN HOUSES WERE A HIT

Bloomington residents had a chance to meet firefighters, police officers and Public Works staff at the annual fire station open houses held in October in recognition of National Fire Prevention Week.

“It was another exciting day of open houses at the fire stations seeing cool fire trucks, snowplows and police squads,” Assistant Fire Chief/Fire Marshal Laura McCarthy said. “Both firefighters and residents enjoyed participating in the activities.”

At five fire stations, firefighters created a fun atmosphere and spoke about this year’s prevention theme: “Fire won’t wait. Plan your escape.” They reinforced the critical importance of developing a home escape plan with all members of the household and practicing it regularly.

Residents and children also watched equipment demonstrations, learned how to properly use a fire extinguisher and tested their skills in an agility course, *pictured above*.



GET READY FOR THE COLD WITH THE HOME ENERGY SQUAD

As we creep into winter it is time to start bracing ourselves for colder weather. This year, make sure your home is braced for the cold, too. With a Home Energy Squad visit, you can have peace of mind knowing your home is properly insulated, your furnace is working well and your home is as energy efficient as possible. After a HES visit you will be staying warm and saving money all winter long.

During a HES visit, an energy auditor will come out to inspect your house and create a customized report with recommendations that will make your home more energy efficient. They will also provide instant energy savings by installing free materials like LED lights, door and attic weather stripping and high-efficiency water fixtures.

Thanks to the City’s partnership with HES, Bloomington residents can get a visit for a discounted rate. Two types of HES visits are available: the energy saver visit (for homes built in or after 2000) and the energy planner visit (for homes built before 2000). Visit blm.mn/hes to learn more about resident rates. If you are ready to schedule your visit, go to mncee.org/hes or call 651-328-6220.

FALL DROUGHT COULD HAVE SPRING IMPACTS

Much of Minnesota experienced severe and extreme drought this fall. The metro area had a precipitation deficit of nearly 10 inches, according to Utilities Superintendent Scott Anderson.

“While this is not yet as severe as the drought in 2021, dry conditions persisting through the fall can impact drought conditions leading into the spring,” Anderson said. “These conditions could impact drinking water sources, which would lead to use restrictions and create stress on ecosystems and wildlife habitats.”

Due to the time of year and decline in seasonal water use, no specific action is required now. However, you can find updated water conservation tips at blm.mn/water-conservation-tips.

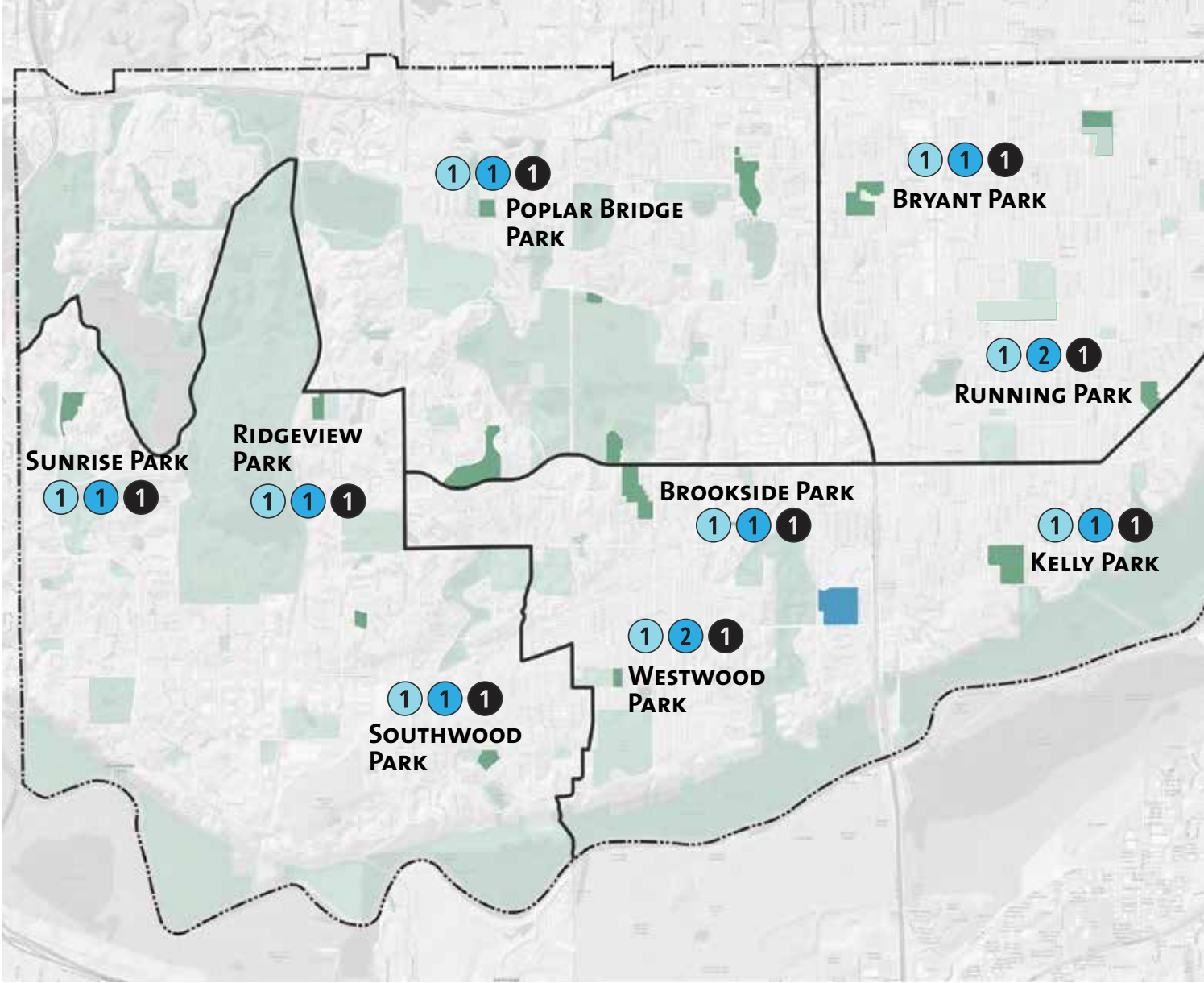


ANNUAL BIG ICE SHOW CELEBRATES ICE

As the winter season winds down, the Bloomington Ice Garden annual ice show, themed “Enchanted Forest,” offers BIG Skate School skaters and Figure Skating Club of Bloomington members an opportunity to show off their skills. Community members are encouraged to join in this celebration and cheer on participants.

When:
Friday, March 17, 7 p.m.
Saturday, March 18, 1 p.m.

Tickets:
Through March 16
Adults: \$8
Seniors (age 62+) and students (age 6 – 18): \$6
Children (age 5 and under) Free
At the door March 17 and 18
Adults: \$10
Seniors and students: \$8
Children (age 5 and under): Free
The dress rehearsal is Thursday, March 16, 6 p.m. Tickets are \$5.
Show and rehearsal tickets are nonrefundable. Tickets can be purchased at BIG’s main office. For credit card ticket purchases, call 952-563-8841.
For the most up-to-date information, visit blm.mn/big or email Rene Gelecinskyj, BIG Skate School coordinator, at rgelecinskyj@BloomingtonMN.gov.



ICE RINKS AND WARMING HOUSES
BLOOMINGTON PARKS WITH GENERAL SKATING, OUTDOOR HOCKEY AND WARMING HOUSES
2022-2023 OUTDOOR SKATING RINKS AND WARMING HOUSES

Dust off your skates and enjoy some classic winter fun on one of Bloomington’s nine outdoor skating rinks. The outdoor skating season is scheduled to run December 15 – February 17, depending on weather and ice conditions. Rink lighting will operate 4:30 – 10 p.m. daily.

Warming houses are scheduled to be open during the following times, pending staff availability:

- Monday – Thursday: 4 – 8 p.m.
- Friday: 4 – 9 p.m.
- Saturday: 10 a.m. – 9 p.m.
- Sunday: 12 – 8 p.m.

All warming houses will be closed December 24, December 25, December 31 and January 1. Lights will still be on and people may skate during posted park hours.

For park addresses, up-to-date rink conditions, closings and schedules visit the City’s website at blm.mn/rinks or call 952-563- 8878 and select option 3.



MEDALIST CONCERT BAND PRESENTS “SOUNDS OF THE SEASON”

Spend a late afternoon with the Medalist Concert Band, Bloomington’s community band, as they play holiday favorites in “Sounds of the Season” at Bloomington Center for the Arts, Schneider Theater, 1800 West Old Shakopee Road. Medalist is pleased to feature local author Tom Hegg in a return performance of “The Night Before Christmas.” Hegg will recite the verse in this musical rendition of a holiday classic.

Sunday, December 18, 4 p.m.

Tickets: Adults \$19 , Seniors and students \$17
For details or tickets, visit medalistband.com.



MONROE CROSSING DELIGHTS WITH “A BLUEGRASS CHRISTMAS”

The Bloomington Center for the Arts is delighted to host Minnesota Monroe Crossing performing, “A Bluegrass Christmas” at the Bloomington Center for the Arts, Schneider Theater, 1800 West Old Shakopee Road.

Wednesday, December 21, 7:30 p.m.

Tickets: \$25
For tickets, visit blm.mn/bca.



CONTINENTAL BALLET PRESENTS “THE NUTCRACKER”

The Continental Ballet Company invites the community to celebrate the holidays with its production of the timeless classic “The Nutcracker” ballet at the Bloomington Center for the Arts, Schneider Theater, 1800 West Old Shakopee Road.

Delighted audiences will find that the director, Riet Velthuisen, allows Tchaikovsky’s music joyful music and the beauty of the precise choreography and technique of the adult dancers to tell the magical story of Clara, her a gift of a nutcracker and the land of the Sugarplum Fairy.

Saturday, December 3 and 10, 7:30 p.m.
Sunday, December 4 and 11, 3 p.m.

Tickets: Adults \$25, Seniors and students \$19, Children under 13: \$13
Purchase tickets at continentalballet.com/tickets or by phone at 952-563-8563.



ENJOY A WINTER LIGHTS TOUR

Buddy from the movie “Elf” says the best way to spread Christmas cheer is singing loud for all to hear. Bloomington City staff are highlighting community members who spread holiday cheer for Parks and Recreation’s first-ever winter lights tour. Registration to put your house on the tour closed on December 5. The City will release the map for visitors to follow around December 9. People who take the winter lights tour will be able to vote for several awards, including the Clark Griswold award, best animated display and most unique. Voting will take place online through January 2. You can find the tour map and more information at blm.mn/winter-lights.



Winter Fete attendees enjoy a recreational fire during the fat-tire bike race at Wildwood Park.

WINTER FETE OFFERS A SEASON OF WINTER FUN

Along with community partners such as Three Rivers Park District, Bloomington Parks and Recreation embraces winter’s snow and ice with a series of activities and events intended to get people outdoors. Winter Fete will take place January 9 – February 27. “Each year we hope people will take advantage of all the activities we put on during Winter Fete and get outside and enjoy the season,” Recreation Supervisor David Benson said. Some of the activities featured this year include an introduction to ice fishing, fat-tire bike riding, open skating, an international ski competition, an ice harvest, a luminary lantern walk around Girard Lake, 8401 France Avenue South, the citywide Winter Lights Tour and more. For more details visit blm.mn/winterfete.

FARE FOR ALL AT CREEKSIDE OFFERS BIG FOOD SAVINGS

The City of Bloomington partners with the Food Group to offer Fare for All, a pop-up community grocery store with up to 40% off packs of fresh produce and frozen meat. You can find holiday packs at Fare for All on Friday, December 16, 11 a.m. – 1 p.m., at Creekside Community Center, 9801 Penn Avenue South. The December holiday pack often includes items such as ham, chicken, pork tenderloin, sweet corn and pie. The store is open for everyone to shop for quality, nutritious foods at budget-friendly prices. No appointment needed and, since it’s a co-op model, more shoppers mean better discounts. For the most up-to-date information on Fare for All events, visit blm.mn/ffa, email parksrec@BloomingtonMN.gov or call 952-563-8877.



SHOP LOCAL AT CREEKSIDE THIS HOLIDAY SEASON

The Creekside Boutique sells a wide selection of unique items like scarves, mittens, slippers and quilts, handmade by older adults who are almost all from Bloomington. For several decades, volunteers have run the shop at Creekside Community Center in Room 104. From embroidered towels to greeting cards to cutting boards to doll dresses, the range of items reflects the creativity of the crafters. The holidays are a great time to shop for locally made goods. Stop in Mondays – Thursdays, 10 a.m. – 3 p.m., and Fridays, 10 a.m. – 1 p.m., at Creekside, 9801 Penn Avenue South. For information, visit blm.mn/boutique or call 952-563-4944.



GLIDE OVER TO SKATE SCHOOL

Learning to skate can open a whole world of fun, laughter, better fitness and even enjoying the cold. The Bloomington Ice Garden Skate School offers classes for skaters of all ages to begin or enhance their ice skating skills in a safe and fun environment. Participants explore the basics of recreational ice skating and receive a solid foundation for figure skating and hockey. Check out winter skate **classes on Saturdays**, December 3 – January 28, and **Tuesdays**, November 29 – January 24, with a cost of \$95. Registration opens November 21. For information or to enroll, visit blm.mn/BIG, call 952-563-8841 or email rgelecinskyj@BloomingtonMN.gov.



SNOW SAFETY 101

Snow and ice can make for a beautiful winter scene. They can also create dangerous driving conditions. The City’s Public Works crews are prepared to keep you traveling safely through it all. In the 2022 National Community Survey, 84% of respondents rated the City’s snow removal services as excellent or good, which is higher than the national average.

In Bloomington, City snowplowing services cost \$4.50 per month for owners of median-valued homes. Snowplow operators are on the streets, preparing them for morning traffic after or during a snowfall as early as 3 a.m. They plow the most heavily used roads first and then move on to other roads and cul-de-sacs. If damage to turf or a mailbox occurs due to snow removal operations, call Street Maintenance at 952-563-8760.

Snow emergency: A declaration the City can make any time weather conditions warrant it. During a snow emergency, no parking is allowed on city streets for the following 48 hours or until the full width of the street has been plowed.



SAFE STREETS, LAKES AND STREAMS

The City treats roads with an anti-icing brine solution to make it more difficult for snow and ice to stick. The brine is a mixture of water and salt. After it is sprayed on the streets, the solution evaporates and leaves behind thin deposits of salt. The salt prevents the bonding of snow and ice so plows can more easily scrape the street clean. The brine reduces the amount of salt required to clear streets. This treatment protects the surrounding bodies of water from excess salt runoff in the spring.

STAY INFORMED

When a snow emergency is declared, the City posts alerts on its website, social media pages, cable channel and E-Subscribe. To receive email alerts about snow emergencies and parking restrictions, sign up for E-Subscribe alerts at blm.mn/esubscribe.

PLAY IT SAFE

From sledding to snowballs, there’s no shortage of fun kids can have in the snow. Help your children play it safe. Never allow children to build tunnels or snow forts near the street. The force and weight of the snow from the plows can collapse tunnels or forts and may severely harm kids. Keep sleds and other toys out of the street and far away from the edge of the road. Snowbanks make it difficult for plow operators to see children in these areas.

WAIT TO CLEAR YOUR DRIVEWAY

Clear the end of your driveway after the full width of your street has been plowed so you only have to shovel once. While clearing streets, snowplows may inadvertently push snow from the road into driveways that have already been shoveled.

PLACE CARTS FOR WINTER

This winter, think about where you put your garbage and recycling carts. If the weather gets snowy or icy, shovel out a safe, accessible space and path for your carts so haulers can easily access them. Be sure to place your carts a minimum of three to five feet from other carts, mailboxes, vehicles, bushes, trees and other objects. Keep carts off sidewalks and out of the street. Visit blm.mn/recycling for more information.

KEEP SIDEWALKS CLEAR

Keeping your sidewalk clear of snow and ice makes walking around Bloomington safer for pedestrians. The City asks that residents and business owners keep their sidewalks free of all snow whether it’s fallen snow or snow that may be moved onto the sidewalk during street or driveway snow removal efforts. It’s illegal for any vehicle to block a public sidewalk.



MOVE YOUR CAR OFF THE STREET DURING SNOW EMERGENCIES

Parked cars make plowing more challenging and result in lingering patches of snow. You can help the City plow more quickly and efficiently. Move your car off the street to avoid having to dig it out of a snowbank or getting a ticket during snow emergencies. To ensure that all streets are fully cleared, Bloomington Police enforce a parking ban during snow emergencies. To see if a snow emergency has been declared, visit the City’s website, there will be an alert at the top of each page, or call the Snow Emergency Hotline at 952-563-8768.



SHOVEL OUT FIRE HYDRANTS, MAILBOXES AND GARBAGE BINS

Help protect your neighborhood from house fires. Accessible hydrants lessen the time it takes firefighters to extinguish a fire. Keep your mailbox clear of snow. Mailboxes should not extend past the curb and should have sturdy four-by-four timber posts. The bottoms of mailboxes should be no less than 45 inches off the ground and located on the left side of your driveway. If it snows on or near garbage collection day, keep garbage and recycling bins behind the curb and away from the end of the driveway. Place containers off sidewalks to leave room for plows.

WATCH FOR SNOWPLOWS

- Did you know a snowplow weighs 17 times more than a car? In a crash with a plow, car passengers are more likely to be seriously injured. Keep these tips in mind to share the road safely:
- Yield to snowplows and stay alert.
 - Give snowplow drivers plenty of space. Allow at least five car lengths between you and a snowplow.
 - Never drive into a snow cloud created by a snowplow.
 - Do not use cruise control on wet, icy roads.