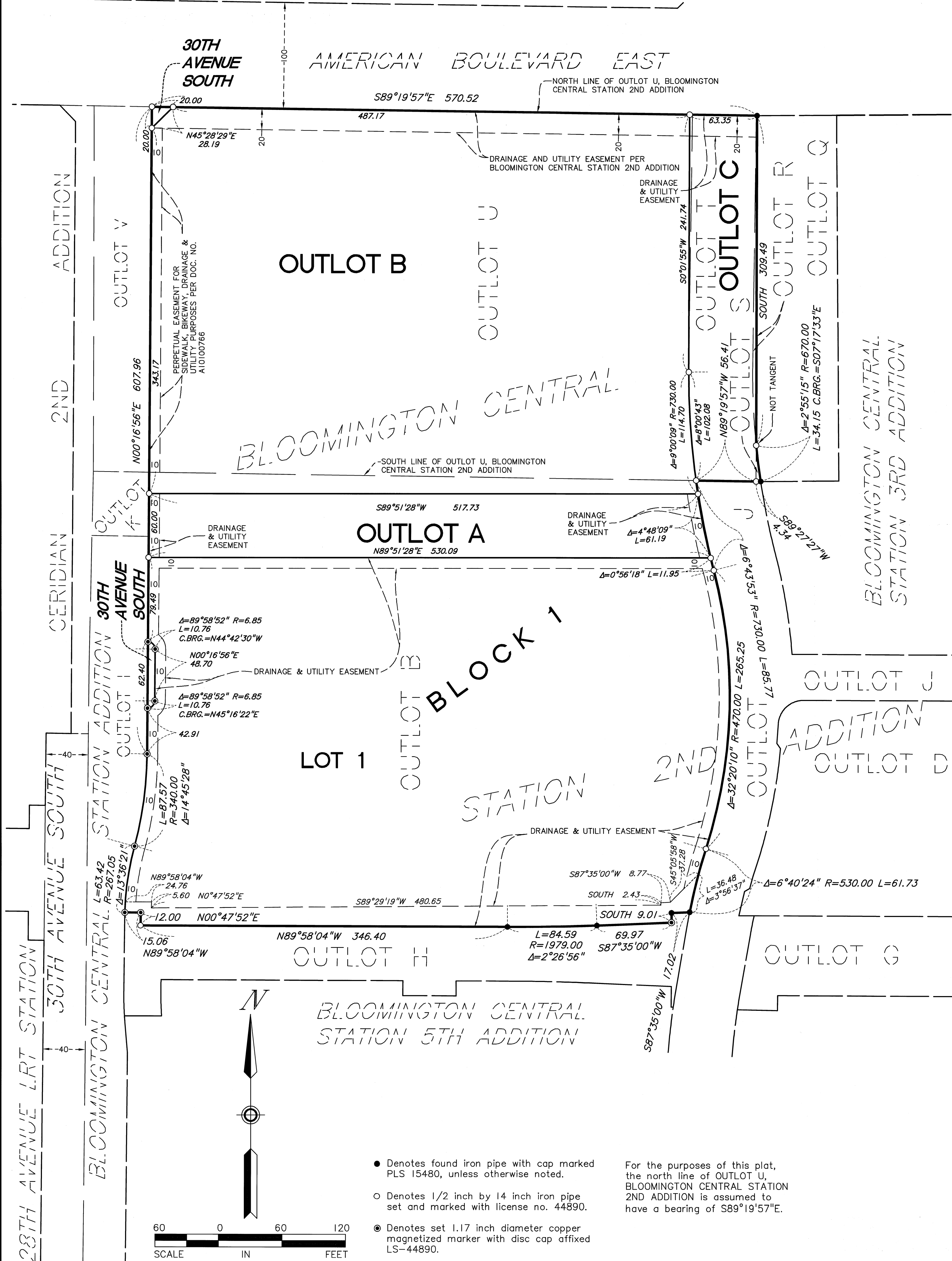


BLOOMINGTON CENTRAL STATION 7TH ADDITION

C.R. DOC. NO. _____



KNOW ALL PERSONS BY THESE PRESENTS: That Bloomington Central Station, LLC, a Delaware limited liability company, owner of the following described property:

OUTLOT B, BLOOMINGTON CENTRAL STATION 2ND ADDITION.

And that BCS GD West, LLC, a Minnesota limited liability company, owner of the following described property:

OUTLOTS R, S, T, and U, BLOOMINGTON CENTRAL STATION 2ND ADDITION

Have caused the same to be surveyed and platted as BLOOMINGTON CENTRAL STATION 7TH ADDITION and do hereby dedicate to the public for public use the public way and the drainage and utility easements as created by this plat.

In witness whereof said Bloomington Central Station, LLC, a Delaware limited liability company, has caused these presents to be signed by its proper officer this 9 day of December, 2021.

SIGNED: Bloomington Central Station, LLC
By MG Bloomington, LLC, a Delaware limited liability company, its manager

By: Thomas J. McGough Jr. its president
Thomas J. McGough Jr.

STATE OF Minnesota
COUNTY OF Ramsey

This instrument was acknowledged before me this 09 day of December, 2021 by Thomas J. McGough Jr., the president of MG Bloomington, LLC, a Delaware limited liability company, the manager of Bloomington Central Station, LLC, a Delaware limited liability company, on behalf of the company.

Andrea Rekon
Signature

Andrea Marie Rekon
Notary Printed Name

Notary Public, _____ County, Minnesota
My Commission Expires January 31, 2022

In witness whereof said BCS GD West, LLC, a Minnesota limited liability company, has caused these presents to be signed by its proper officer this 9 day of December, 2021.

SIGNED: BCS GD WEST, LLC
By: Thomas J. McGough Jr. its MANAGER

STATE OF Minnesota
COUNTY OF Ramsey

This instrument was acknowledged before me this 09 day of December, 2021 by Thomas McGough Jr., the manager of BCS GD WEST, LLC, a Minnesota limited liability company, on behalf of the company.

Andrea Rekon
Signature

Andrea Marie Rekon
Notary Printed Name

Notary Public, _____ County, Minnesota
My Commission Expires January 31, 2022

I, Leonard F. Carlson, do hereby certify that this plat was prepared by me or under my direct supervision; that I am a duly Licensed Land Surveyor in the State of Minnesota; that this plat is a correct representation of the boundary survey, that all mathematical data and labels are correctly designated on this plat; that all monuments depicted on this plat have been or will be correctly set within one year; that all water boundaries and wet lands as defined in Minnesota Statutes, Section 505.01, Subd. 3, as of the date of this certificate are shown and labeled on this plat; and all public ways are shown and labeled on the plat.

Dated this 8th day of December, 2021

Leonard F. Carlson
Signature
Leonard F. Carlson, Land Surveyor
Minnesota License No. 44890

STATE OF MINNESOTA
COUNTY OF HENNEPIN

This instrument was acknowledged before me this 8th day of December, 2021, by Leonard F. Carlson.

Laura J. Swift
Signature
Laura J. Swift
Notary Printed Name

Notary Public, Minnesota
My Commission Expires January 31, 2022

CITY COUNCIL, CITY OF BLOOMINGTON, MINNESOTA
This plat of BLOOMINGTON CENTRAL STATION 7TH ADDITION was approved and accepted by the City Council of the City of Bloomington, Minnesota, at a regular meeting thereof held this 3rd day of May, 2021, and said plat is in compliance with the provisions of Minnesota Statutes, Section 505.03, Subd. 2.

CITY COUNCIL OF BLOOMINGTON, MINNESOTA
By Tim Bunn, Mayor By John, City Manager

RESIDENT AND REAL ESTATE SERVICES, Hennepin County, Minnesota
I hereby certify that taxes payable in 20____ and prior years have been paid for land described on this plat, dated this ____ day of _____, 20____.

Mark V. Chapin, County Auditor By _____ Deputy

SURVEY DIVISION, Hennepin County, Minnesota
Pursuant to Minnesota Statutes, Sec. 383B.565 (1969), this plat has been approved this ____ day of _____, 20____.

Chris F. Mavis, County Surveyor By _____

COUNTY RECORDER, Hennepin County, Minnesota
I hereby certify that the within plat of BLOOMINGTON CENTRAL STATION 7TH ADDITION was recorded in this office this ____ day of _____, 20____ at ____ o'clock ____M.

Amber Bougie, County Recorder By _____ Deputy

- Denotes found iron pipe with cap marked PLS 15480, unless otherwise noted.
 - Denotes 1/2 inch by 14 inch iron pipe set and marked with license no. 44890.
 - Denotes set 1.17 inch diameter copper magnetized marker with disc cap affixed LS-44890.
- For the purposes of this plat, the north line of OUTLOT U, BLOOMINGTON CENTRAL STATION 2ND ADDITION is assumed to have a bearing of S89°19'57"E.

