

OLD CEDAR APARTMENTS

R.T. DOC. NO. _____

KNOW ALL PERSONS BY THESE PRESENTS: That Old Cedar Limited Partnership, a Minnesota limited partnership, owner of the following described property situated in the County of Hennepin, State of Minnesota, to wit:

The East 333 feet of the following described tract:

That part of the East Half of the Northeast Quarter of Section 2, Township 27, Range 24, lying North of the South line of the North 6.4 feet of that part of said East Half of the Northeast Quarter lying South of a line extending from a point on the East line of said East Half of the Northeast Quarter distant 1560.4 feet South from the Northeast corner of said East Half of the Northeast Quarter to a point on the West line of said East Half of the Northeast Quarter distant 1562.4 feet South from the Northwest corner of said East Half of the Northeast Quarter and lying South of the North line of the South 1062.8 feet of the Southeast Quarter of the Northeast Quarter of said Section 2.

Has caused the same to be surveyed and platted as OLD CEDAR APARTMENTS and does hereby dedicate to the public for public use the public way and the drainage and utility easements as created by this plat.

In witness whereof said Old Cedar Limited Partnership, a Minnesota limited partnership, has caused these presents to be signed by its proper partner this ____ day of _____, 20__.

Signed: Old Cedar Limited Partnership
By: Old Cedar GP, LLC, a Minnesota limited liability company, General Partner

By: [Signature]
Nick Walton, Manager

STATE OF MINNESOTA
COUNTY OF Hennepin

This instrument was acknowledged before me on 19th day of June, 2021 by Nick Walton, Manager of Old Cedar GP, LLC, a Minnesota limited liability company, General Partner of Old Cedar Limited Partnership, a Minnesota limited partnership, on behalf of the partnership.

[Signature]
Signature of Notary
Anne Stephenson
Printed Name

Notary Public, Hennepin County, Minnesota
My Commission Expires 1-31-25

I Peter Goers do hereby certify that this plat was prepared by me or under my direct supervision; that I am a duly Licensed Land Surveyor in the State of Minnesota; that this plat is a correct representation of the boundary survey; that all mathematical data and labels are correctly designated on this plat; that all monuments depicted on this plat have been, or will be correctly set within one year; that all water boundaries and wet lands, as defined in Minnesota Statutes, Section 505.01, Subd. 3, as of the date of this certificate are shown and labeled on this plat; and all public ways are shown and labeled on this plat.

Dated this 16th day of June, 2021.

[Signature]
Peter Goers, Licensed Land Surveyor
Minnesota License No. 44110

STATE OF MINNESOTA
COUNTY OF HENNEPIN

This instrument was acknowledged before me on this 16th day of June, 2021, by Peter Goers.

[Signature]
Signature of Notary
Daniel P. Ekrem
Printed Name

Notary Public, Dakota County, Minnesota
My Commission Expires January 31, 2024

CITY COUNCIL, CITY OF BLOOMINGTON, MINNESOTA

This plat of OLD CEDAR APARTMENTS was approved and accepted by the City Council of the City of Bloomington at a regular meeting thereof held this 19th day of April, 2021, and said plat is in compliance with the provisions of Minnesota Statutes, Section 505.03, Subd. 2.

City Council, City of Bloomington, Minnesota

by [Signature], Mayor by [Signature], City Manager

RESIDENT AND REAL ESTATE SERVICES, Hennepin County, Minnesota

I hereby certify that taxes payable in 20__ and prior to years have been paid for land described on this plat, dated this ____ day of _____, 20__.

Mark V. Chapin, County Auditor

by _____, Deputy

SURVEY DIVISION
Hennepin County, Minnesota

Pursuant to MN. STAT. Sec. 383B.565 (1969), this plat has been approved this ____ day of _____, 20__.

Chris F. Mavis, County Surveyor

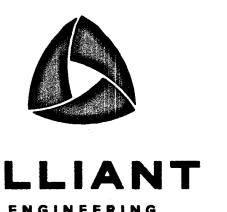
by _____

REGISTRAR OF TITLES
Hennepin County, Minnesota

I hereby certify that the within plat of OLD CEDAR APARTMENTS was filed in this office this ____ day of _____, 20__, at ____ o'clock __.M.

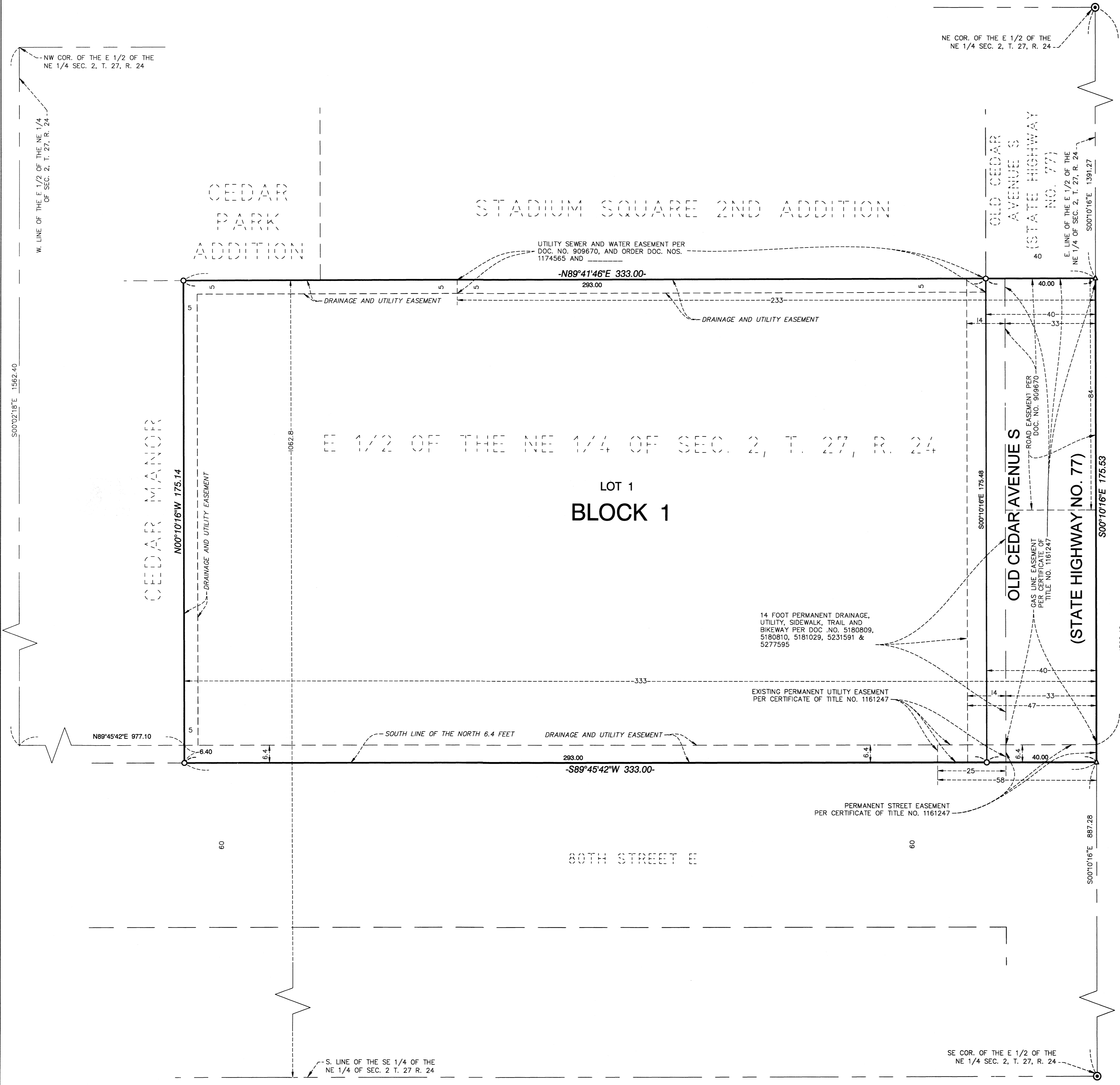
Martin McCormick, Registrar of Titles

by _____, Deputy



OLD CEDAR APARTMENTS

R.T. DOC. NO. _____



The orientation of this bearing system is based on the Hennepin County Coordinate System NAD83 (86 Adj.)

- Denotes 1/2 inch x 18 inch iron monument set marked by license no. 44110 unless otherwise shown
- ▲ Denotes mag nail and disc set marked by License No. 44110.
- ⊙ Denotes Hennepin County Cast Iron Monument found

