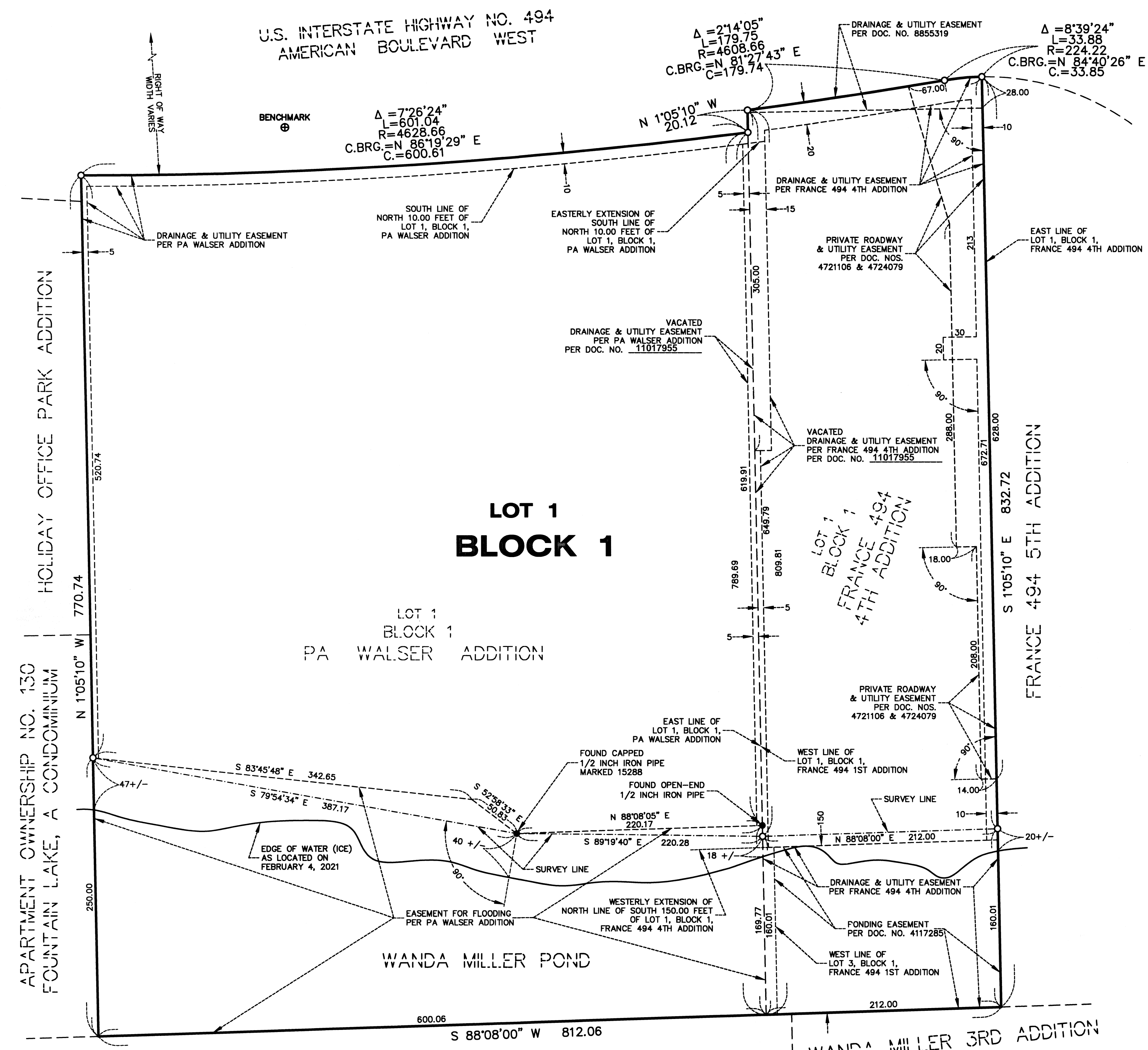


# PA WALSER 2ND ADDITION

C.R. DOC. NO. \_\_\_\_\_



KNOW ALL PERSONS BY THESE PRESENTS: That Walser Real Estate IV, LLC, a Minnesota limited liability company, fee owner, of the following described property situated in the County of Hennepin, State of Minnesota to wit:

Lot 1, Block 1, FRANCE 494 4TH ADDITION  
Lot 1, Block 1, PA WALSER ADDITION

Have caused the same to be surveyed and platted as PA WALSER 2ND ADDITION.

In witness whereof Walser Real Estate IV, LLC, a Minnesota limited liability company has caused these presents to be signed by its proper officer this 18th day of August 2021

Signed: [Signature] Walser Real Estate IV, LLC  
By: [Signature] Its: CEO/OWNER

STATE OF MINNESOTA  
COUNTY OF HENNEPIN  
This instrument was acknowledged before me this 18th day of August 2021 by Andrew Walser its CEO/OWNER of Walser Real Estate IV, LLC, a Minnesota limited liability company, on behalf of the company.

[Signature]  
Notary Public, Hennepin County, Minnesota  
My Commission Expires 1-31-2025  
DORIS C. RIZNER  
Printed Name

I, Thomas E. Hodorf, do hereby certify that this plat was prepared by me or under my direct supervision; that I am a duly Licensed Land Surveyor in the State of Minnesota; that this plat is a correct representation of the boundary survey; that all mathematical data and labels are correctly designated on this plat; that all monuments depicted on this plat have been, or will be correctly set within one year; that all water boundaries and wet lands, as defined in Minnesota Statutes, Section 505.01, Subd. 3, as of the date of this certificate are shown and labeled on this plat; and all public ways are shown and labeled on this plat.

Dated this 17th day of August, 2021

[Signature]  
Thomas E. Hodorf, Licensed Land Surveyor  
Minnesota License No. 23677

STATE OF MINNESOTA  
COUNTY OF Hennepin  
This instrument was acknowledged before me on this 17th day of August, 2021 by Thomas E. Hodorf.

[Signature]  
Notary Public, Hennepin County, Minnesota  
My Commission Expires 2-21-2025  
JAMES GAMBLE  
Printed Name

CITY COUNCIL, CITY OF BLOOMINGTON, MINNESOTA  
This plat of PA WALSER 2ND ADDITION was approved and accepted by the City Council of the City of Bloomington, Minnesota at a regular meeting thereof held this 7th day of June, 2021, and said plat is in compliance with the provisions of Minnesota Statutes, Section 505.03, Subd. 2.

CITY COUNCIL, CITY OF BLOOMINGTON, MINNESOTA  
By: [Signature] Mayor By: [Signature] City Manager

RESIDENT AND REAL ESTATE SERVICES, Hennepin County, Minnesota  
I hereby certify that taxes payable in 20\_\_\_ and prior years have been paid for land described on this plat, dated this \_\_\_ day of \_\_\_\_\_, 20\_\_

Mark V. Chapin, County Auditor By: \_\_\_\_\_ Deputy

SURVEY DIVISION, Hennepin County, Minnesota  
Pursuant to MN. STAT. Sec. 363B.565 (1969), this plat has been approved this \_\_\_ day of \_\_\_\_\_, 20\_\_

Chris F. Mavis, County Surveyor By: \_\_\_\_\_

COUNTY RECORDER, Hennepin County, Minnesota  
I hereby certify that the within plat of PA WALSER 2ND ADDITION was recorded in this office this \_\_\_ day of \_\_\_\_\_, 20\_\_ at \_\_\_ o'clock \_\_\_M.

Amber Bougle, Acting County Recorder By: \_\_\_\_\_ Deputy

EAST LINE OF LOT 1, BLOCK 1, FRANCE 494 4TH ADDITION IS ASSUMED TO HAVE A BEARING OF S 105°10' E.  
WATER ELEVATION (ICE) ON FEBRUARY 4, 2021 ELEVATION = 820.00 FEET (NAVD 88)

- DENOTES SET IRON MONUMENT EVIDENCED BY 1/2 INCH BY 14 INCH IRON PIPE MARKED R.L.S. 23677
- DENOTES FOUND IRON MONUMENT
- ⊕ BENCHMARK: TOP NUT HYDRANT (AS SHOWN ON PLAT) ELEVATION = 827.44 FEET (NAVD 88)

