



# HISTORIC PROPERTY INFORMATION SHEET

## Gideon Pond House and Farm Site

Prepared by the Planning and Economic Development Division

Address: 401 East 104<sup>th</sup> Street (PIN 2202724140027)

Year Built: 1856

Lot Size: Approximately 40 acres

Zoning: SC -- Conservation / BP-2 – Bluff Protection

Guide Plan: Public

Assessed Value: Land – \$462,800  
Building – \$61,300

Historic Designation: Class I – Local  
National Historic Register

### **HISTORY**

In 1834, two brothers, Gideon and Samuel Pond, came to Minnesota to serve as missionaries to the Dakota Indians. The original mission (Oak Grove Mission) was constructed a short distance southeast of the present house. A year after Gideon's first wife's death in 1853, he married Sara Hopkins, widow of another missionary, John Hopkins. The combined families were too large for the mission and in May of 1856, Pond began manufacturing bricks from the clay on-site to construct a home. He completed the home in the Fall of 1856.

The home is in the Federal style, expressed primarily in massing, roofline and detailing. Few alterations have been made in its 121 year history. Some interior changes were made in 1873-1874. The original pre-emption cabin/summer kitchen was replaced by the present two story wood frame addition in 1910. Stoves were replaced by a furnace in 1925 and electricity installed in 1937. The four original chimneys were removed in 1947. The home was placed on the National Historic Register in 1970.

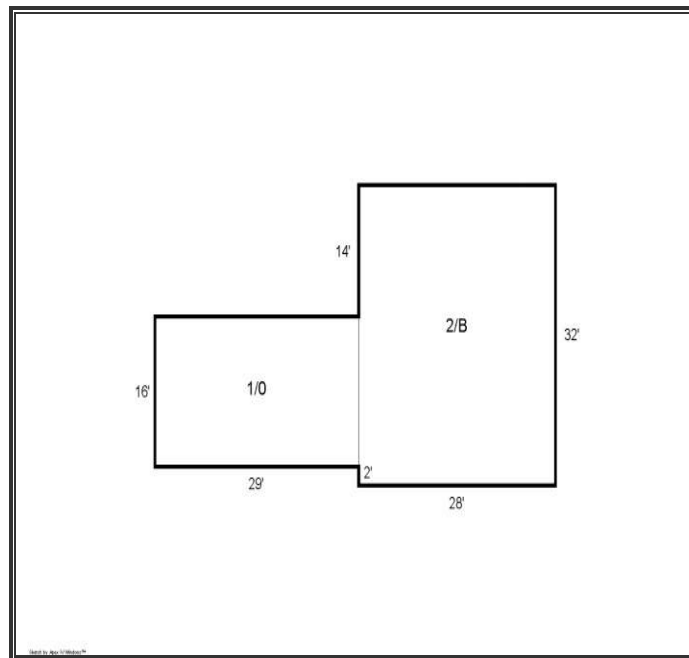
#### NOTE:

(The above information is extracted from the Miller Dunwiddie Community Survey of Historic sites completed in 1977.)

The City of Bloomington purchased the property in the 1970s using Land and Water Conservation Funds. The City completed an extensive study, adopted a Park Master Plan, and completed significant improvements to preserve the home and heritage. A 30,000 square foot parcel in the south/center of the park remains privately owned. The City has no agreement to purchase the property. Acquisition of this parcel is a significant part of the long term park plans. In addition, several other improvements are yet to be completed according to the 1994 Park Master Plan. They include but are not limited to additional parking areas, barn construction/restoration, and a picnic pavilion.

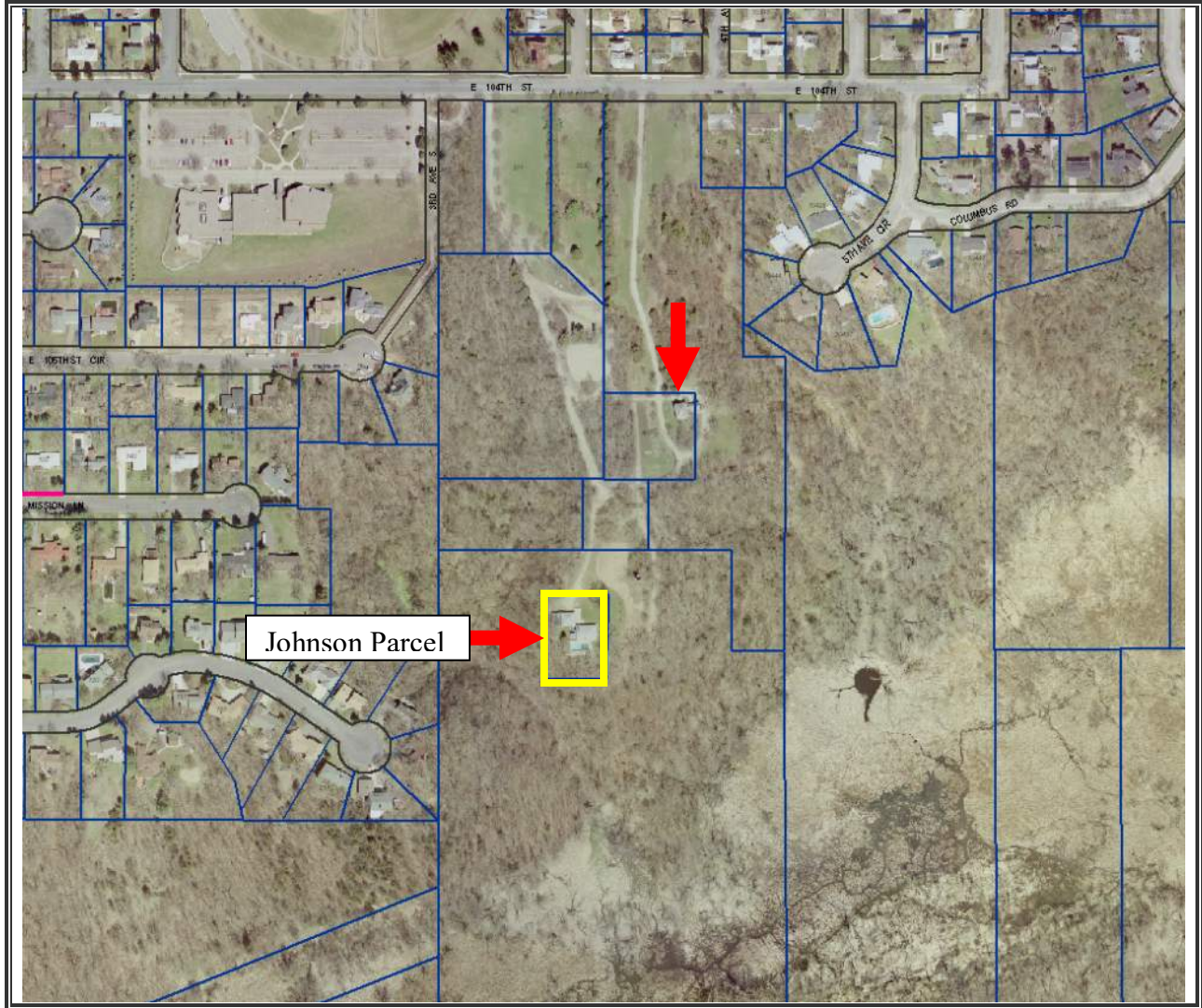
PID Number: 2202724140027

Site Address: 401 E 104<sup>th</sup> Street





**Snapshot from City of Bloomington GIS**



**Disclaimer**

The information contained in this document is provided as a service to the community. While the information provided is believed to be an accurate representation of the subject property, the City makes no claims, promises or guarantees about the accuracy, completeness, or adequacy of the information provided.