

BLOOMINGTON BRIEFING



OCTOBER 2023



PAGE 2



PAGE 3



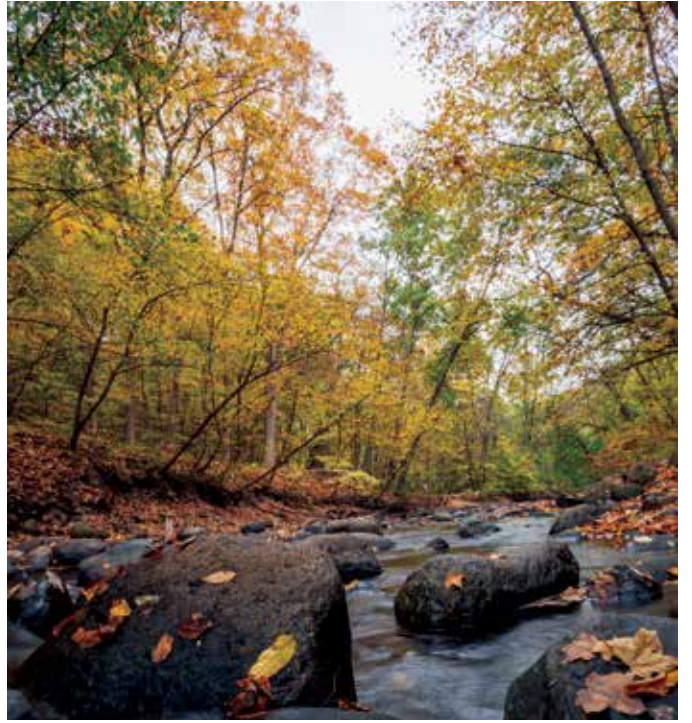
PAGE 6



PAGE 7



BLOOMINGTON
Forward
INVESTING IN OUR COMMUNITY



BLOOMINGTON FORWARD: INVESTING IN OUR COMMUNITY

Bloomington is a popular destination to live, work, shop, play and raise a family. As the city grows and evolves, Bloomington needs to continue making investments in community amenities that bring residents together and enhance their quality of life.

After more than two years of gathering input from community members, the City developed a long-term investment plan, Bloomington Forward, that would support three major community projects for better health, wellness, athletics, recreation and improved natural areas. On Tuesday, November 7, Bloomington voters will consider a half-percent local option sales tax to finance \$159 million in bonds to pay for the three projects. They include:

CREEKSIDE COMMUNITY CENTER AND PUBLIC HEALTH BUILDING REPLACEMENT

Need: These obsolete buildings do not meet the needs of the communities they serve.

Benefits: Combining them into a new community health and wellness center would provide a more effective environment to deliver vital health, fitness and recreational services as well as social activities. **The new facility would be located where Creekside is now at 9801 Penn Avenue South.**

Cost: \$101.8 million. (The City has already received approval of \$1.8 million from the State of Minnesota for predesign work.)

BLOOMINGTON ICE GARDEN UPGRADE

Need: This popular facility needs modernization and major updates to mechanical systems, including refrigeration for all three ice sheets.

Benefits: The upgrade would improve guest experience and make it possible to continue ice rental and hosting dozens of tournaments and figure skating events annually.

Cost: \$37.27 million. (The City has already received approval of \$2.27 million from the State of Minnesota for predesign work.)

NINE MILE CREEK CORRIDOR RENEWAL

Need: The Nine Mile Creek corridor is vulnerable. If approved, the sales tax would provide critical investments to enhance and preserve the corridor by restoring riverbanks, wetlands and wooded areas, protecting habitat, and removing invasive species. Other improvements would include outdoor recreation amenities, such as the outdoor gathering space at Moir Park, and improved accessibility.

Benefits: Any investment to enhance trail access needs to be balanced with the commitment to preserve the corridor and protect the safety and enjoyment of all users. If funding is approved by voters in November, residents would be engaged to help determine the exact improvements for the corridor.

Cost: \$20 million.

For more information, visit bloomingtonforward.org.

Find us online
BLOOMINGTON MN.gov



Presort Std
U.S. Postage
PAID
Twin Cities, MN
Permit
#2293

ECRWSS
POSTAL CUSTOMER

CITY OF BLOOMINGTON
1800 WEST OLD SHAKOPEE ROAD
BLOOMINGTON MN 55431-3027

CHECK OUT BLOOMINGTON FORWARD FAQ IN THIS ISSUE

Pages 4 – 5 provide an overview of frequently asked questions about the three projects outlined in the community investment plan Bloomington Forward as well as the text of the three ballot questions.



Small-scale improvements took place over the last year at the Old Shakopee Road and Old Cedar Avenue intersection.

MAYOR'S MEMO REVITALIZING THE OLD SHAKOPEE ROAD AND OLD CEDAR AVENUE INTERSECTION

By Mayor Tim Busse

Back in 2022, the City's Creative Placemaking Commission, Housing and Redevelopment Authority and the Community Development Department worked with Musicant Group to connect with businesses at Old Shakopee and Old Cedar Avenue to develop a plan to revitalize the intersection.

The collaborative partners considered ways to create a safer experience for pedestrians, engage the community and encourage cross-business patronage. To engage the surrounding community, a pop-up event was held in fall 2022 with live music, food and family-friendly activities.

Work began in early 2023 on small-scale improvements to highlight several businesses. Projects completed include:

- Storefront update for Gyros Grill.
- Customized bench for Ocean Blue Tattoo.
- New signage for Jonny Rock Bikes.
- Façade paint refresh for Old Cedar Liquor.
- Patio heaters for the Eagles.
- Landscaping refresh around Shell Gas Station.

"Multiple options were discussed, but it was decided that a bench would work the best for us," said Daniel Song, owner of Ocean Blue Tattoo. "It's a great addition and a nice place for people to sit outside."

For more information about creative placemaking in Bloomington, visit blm.mn/placemaking.

SMALL BUSINESS DEVELOPMENT EFFORTS CONTINUE TO GROW

The City hosted a series of community engagement events over the summer to open conversations with the small business community and to help future entrepreneurs dream up their business.

"Through these engagements, we heard a feeling in the small business community that the City focuses on policies and regulations over relationship building and business assistance," said Assistant Port Authority Administrator Barb Wolff who serves as a liaison between businesses, business resources and City departments. "While policies and regulations are necessary, we hope this new initiative helps change that perception. The business assistance team proactively supports small businesses and entrepreneurs and serves as a connection point to find who they need to talk to as they imagine or discover their next steps."

To learn more about small business assistance resources and upcoming events, visit blm.mn/business.



CONNECT WITH THE SMALL BUSINESS ASSISTANCE TEAM

Events are held at Civic Plaza, 1800 West Old Shakopee Road, unless otherwise noted.

WELCOMING WEDNESDAYS

Learn about startup and small business resources available in Bloomington at Welcoming Wednesdays, the second Wednesday of the month, 12 – 2 p.m. The host for 2023, Jeff Aguy, pictured above, is founder and CEO of 2043 SBC.

SMALL BUSINESS ENGAGEMENT VISITS

Want staff and a business advisor to visit your business to connect and bring resources? Contact the Port Authority at business@BloomingtonMN.gov or 952-563-4706 to arrange a visit on the fourth Wednesday of the month.

CEO START COHORT PROGRAM

Learn more about this new 10-week cohort/peer-based program that equips aspiring entrepreneurs and new small business owners with the insights, relationships and tools to turn business ideas into action. Find details at blm.mn/CEO.

BRIEFING

Volume 31, Number 10

The *Briefing*, published monthly by the City of Bloomington, is mailed to residents and businesses. Direct your comments and requests for Braille, larger print or computer file to Communications Administrator Janine Hill, 1800 West Old Shakopee Road, Bloomington MN 55431-3071; PH 952-563-8819; MN Relay 711; FAX 952-563-8715; Email: jhill@BloomingtonMN.gov
Website: BloomingtonMN.gov

BLOOMINGTON CITY COUNCIL



Mayor
Tim Busse
952-563-8782 (w)
952-457-7506 (c)
tbusse@
BloomingtonMN.gov

Councilmember At Large
Chao Moua
763-229-7582
cmoua@
BloomingtonMN.gov



Councilmember At Large
Jenna Carter
612-284-8751
jcarter@
BloomingtonMN.gov

Councilmember District I
Dwayne Lowman
952-270-2377
dlowman@
BloomingtonMN.gov



Councilmember District II
Shawn Nelson
952-479-0471
snelson@
BloomingtonMN.gov

Councilmember District III
Lona Dallessandro
612-231-6824
ldallessandro@
BloomingtonMN.gov



Councilmember District IV
Patrick Martin
952-454-6657
pmartin@
BloomingtonMN.gov

Elected officials presented for informational purposes.

COUNCILMEMBERS

council@BloomingtonMN.gov

EXECUTIVE STAFF

Jamie Verbrugge, <i>City Manager</i>	952-563-8780
citymanager@BloomingtonMN.gov	
Michael Sable, <i>Assistant City Manager</i>	952-563-8780
citymanager@BloomingtonMN.gov	
Karla Henderson, <i>Community Development</i>	952-563-8947
communitydevelopment@BloomingtonMN.gov	
Diann Kirby, <i>Community Services</i>	952-563-8717
communityservices@BloomingtonMN.gov	
Lori Economy-Scholler, <i>Finance</i>	952-563-8791
finance@BloomingtonMN.gov	
Ulie Seal, <i>Fire</i>	952-563-4801
fire@BloomingtonMN.gov	
Amy Cheney, <i>Information Technology</i>	952-563-4885
it@BloomingtonMN.gov	
Melissa Manderschied, <i>Legal</i>	952-563-8753
legal@BloomingtonMN.gov	
Ann Kattreh, <i>Parks and Recreation</i>	952-563-8877
parksrec@BloomingtonMN.gov	
Booker T. Hodges, <i>Police</i>	952-563-4900
police@BloomingtonMN.gov	
Karl Keel, <i>Public Works</i>	952-563-8731
publicworks@BloomingtonMN.gov	
General phone number	952-563-8700

The City of Bloomington does not discriminate against or deny the benefits of its services, programs, or activities to a qualified person because of a disability. The City will provide a reasonable accommodation or modify its policies and programs to allow people with disabilities to participate in all City services, programs, activities, and employment. The law does not require the City to take any action that would fundamentally alter the nature of its programs or services, or impose an undue financial or administrative burden on the City. To make a request for a reasonable accommodation, ask for more information, or to file a complaint, contact the Community Outreach and Engagement Division, City of Bloomington, 1800 West Old Shakopee Road, Bloomington, MN 55431-3027; 952-563-8733, MN Relay 711.



WHAT'S DEVELOPING IN BLOOMINGTON

Bloomington is a happening place where people want to be. To meet the demands in this dynamic community, businesses are stepping up to offer affordable housing, restaurants, banks, car washes and more. Here's a quick look at several recent developments. The area median income included in the housing developments below is defined by the U.S. Department of Housing and Urban Development and in alignment with the City's Opportunity Housing Ordinance.

- **Risor of Bloomington**, a 145-unit apartment building for active 55+ residents just off 34th Avenue, sits above the bluff overlooking Long Meadow Lake and the Minnesota River Valley. The development offers 14 units restricted for residents with an income at or below the 60% area median income. It opened in July.
 - **Carbon31**, a 403-unit apartment building located in Bloomington Central Station, offers 39 units restricted for residents with an income at or below the 60% area median income. It is expected to open its first phase in October. On the main floor, Oxendales Bloomington Market, a locally owned grocery store, is scheduled to open in November. *Pictured top right.*
 - **Oxboro Heights**, a 125-unit senior apartment building located at 600 West 93rd Street, is currently under construction. This project will offer a mixture of affordable units restricted to residents with incomes at or below 30% and up to 70% area median income. It is expected to open in spring 2024. *Pictured top left.*
 - **Noble Apartments**, a 149-unit apartment building located at 8200 Humboldt Avenue, is currently under construction. This development will offer 14 units restricted to residents with an income at or below the 50% area median income. It is expected to open in spring 2024.
 - **Seagate Technology** is constructing an 80,000-square-foot addition to its existing technology campus at 7801 Computer Avenue.
 - **Top Line Credit Union** constructed a new 3,000-square-foot building at 900 American Boulevard West. The credit union opened in September.
 - **Tommy's Express Car Wash** at 200 West 98th Street is expected to open in December. *Pictured bottom right.*
 - **Gyropolis** is anticipated to start demolition of the vacant service station at the corner of 90th and Penn this fall. Once demolition is complete, construction of a 2,400-square-foot addition will begin. *Pictured bottom left.*
- For a map of current development throughout Bloomington, visit blm.mn/developmentmap.

READY TO REFINE YOUR LEADERSHIP SKILLS?

The Bloomington Leadership Program, a free two-month interactive program, is accepting applications through October 30. Participants can develop their leadership skills in virtual educational sessions, promote civic engagement, break down barriers, increase understanding of local government and build relationships with City staff, elected officials and nonprofit representatives.

Who: Bloomington residents 18 years and older, with the ability to attend at least eight of 10 sessions (no more than two absences).

When: Sessions will take place from February 1 – March 21, Thursday evenings, and two Saturday mornings.

Apply: To learn more or apply, visit blm.mn/leadership. Call 952-563-8733, MN Relay 711, to be mailed an application.

HEAR FROM RECENT GRADUATES

Emily Melby, a CPA, works as a business analyst consultant for Optum and was recently appointed to the Bloomington Charter Commission.

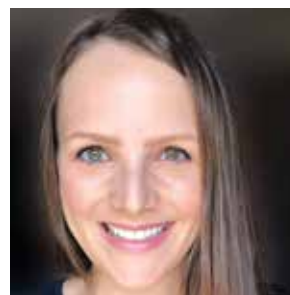
"My biggest take away was how much the City considers the resident. From the way they structure policies and design parks to how they interact with the residents – it's all so thoughtfully done in a manner that truly tries to make Bloomington an inclusive community where everyone can thrive."

Makayla Buckman, a marketing training manager, works for Guaranteed Rate.

"If you are looking to make meaningful connections within the local community, learn more about the inner workings of Bloomington, identify ways to serve or simply want something to look forward to each Thursday, the 2024 Bloomington Leadership Program is for you! It also transformed how I lead within my profession."

Ryan Lokken is a stay-at-home father of two children.

"The Leadership Program made me a better leader by giving me the confidence to go out of my comfort zone. I am currently a founding member of the nonprofit Tod Pod Playgroup, and part of a growing community of parents planting roots here and wanting to help shape our city."



Emily Melby



Makayla Buckman



Ryan Lokken



HELP PLAN THE 2024 BUDGET

What City services are most worth the investment? Let your voice be heard in the City's 2024 budget planning process at the last of 13 budget events this season:

- Fire Station Open House, Saturday, October 14, 10 a.m. – 12 p.m., at Fire Station 1, 10 West 95th Street.

Learn more about the budget planning process on the City's website at blm.mn/budget or call 952-563-8790.

CITY PARTICIPATES IN RESILIENT COMMUNITIES PROJECT

During the 2022 – 2023 academic year, various divisions within the City partnered with the University of Minnesota on multiple projects. The Resilient Communities Project's mission is to connect local government agencies with U of M students and faculty to work collaboratively on projects that drive progress in community resilience, equity and sustainability, while simultaneously enhancing student learning, knowledge and skills.

The City was able to match three project proposals with student teams, including Development Impacts Analysis, Impacts of the Bloomington Leadership Program, and Recruitment and Retention of Black, Indigenous and People of Color (BIPOC) Millennial Workforce in Local Government. Students submitted the findings of their research and analysis by preparing reports and presenting to Bloomington officials and staff.

For those interested in viewing the final reports submitted for these projects, you can find them online at blm.mn/rcp.

BLOOMINGTON FORWARD: INVESTING

On Tuesday, November 7, Bloomington voters will consider a half-cent local option sales tax to finance \$155 million in bonds for three major community projects for better health, wellness, athletics, and recreation and improved natural areas. If you have questions about the projects or the sales tax, visit bloomingtonforward.org/connect.

FREQUENTLY ASKED QUESTIONS

Here are a few of the most frequently asked questions. An extensive list is available at bloomingtonforward.org/faq.

PROJECT FOCUSED QUESTIONS

WHAT IS THE BLOOMINGTON FORWARD PLAN?

Guided by feedback from residents, the City has put forward a \$155 million investment plan to:

- Build a new community health and wellness center, \$100 million plus \$1.8 million from the State of Minnesota.
- Support major renovations at Bloomington Ice Garden, \$35 million plus \$2.272 million from the State of Minnesota.
- Provide new amenities and habitat restoration along the Nine Mile Creek Corridor, \$20 million.

The total investment for these projects is \$159 million.

WHY IS THE CITY SEEKING TO BUILD A NEW COMMUNITY HEALTH AND WELLNESS CENTER?

The City is seeking to build a new community health and wellness center to replace the Creekside Community Center and Bloomington Public Health buildings, which were built in the 1960s and are too small and outdated to serve the growing needs of the community. The new facility would be located where Creekside is now, 9801 Penn Avenue South.

The new center would provide flexible gathering spaces, activities and recreational opportunities for community members of all ages and backgrounds, including older adults, families and those with disabilities. A new center would also strengthen access to health and wellness programs for the community. The new facility would more effectively support public health services including immunizations, nutrition education, pregnancy and parenting education, older adult health resources and more.

WHY IS THE BLOOMINGTON ICE GARDEN ON THE LIST FOR IMPROVEMENTS?

Bloomington Ice Garden (BIG) features three ice rinks and is one of the busiest ice skating facilities in Minnesota, hosting more than 9,000 hours of ice time and 24 tournaments and events annually.

The City proposes renovating and upgrading the 50-year-old facility to ensure it continues to provide Bloomington skaters and families quality ice time close to home, and continues to draw visitors from across the region who bring revenue to Bloomington through hotel stays, restaurant visits, gas purchases, retail sales and more.

WHY IS THE NINE MILE CREEK CORRIDOR ON THE LIST FOR IMPROVEMENTS?

Occupying 240 acres, Moir/Central Park in the Nine Mile Creek corridor features trails and many outdoor amenities that residents enjoy. Invasive species such as buckthorn and garlic mustard are taking a toll on this Bloomington jewel. Riverbank erosion and loss of woodlands and wetlands also threaten the corridor's long-term future.

To ensure Moir/Central Park and the Nine Mile Creek corridor continue to connect residents to nature and outdoor activities, the City is seeking to restore eroded riverbanks, enhance and protect natural habitat, add new amenities to the park and build new bridges and trails, as needed. The overall goal would be to improve and restore critical natural resources in the corridor.

SALES TAX FOCUSED QUESTIONS

WHAT HAPPENS TO THE SALES TAX RATE IF ONE OR TWO OF THE PROJECTS ARE APPROVED INSTEAD OF ALL THREE?

The sales tax rate would stay the same no matter how many questions are approved by voters. The tax would be 0.5% so long as one, two or all three projects are approved in November.

The sales tax will end when the approved project(s) are fully funded. The maximum term for the sales tax is 20 years. If just one or two projects are accepted by voters, the sales tax will still end when the project or projects are fully funded, likely before the maximum term.

ARE THERE EXEMPTIONS TO THE SALES TAX?

The local option sales tax has the same exemptions for purchases as the state sales tax. Sales tax wouldn't be collected on groceries, clothing, prescription and over-the-counter drugs, feminine hygiene products and baby products. Sales of motor vehicles and boats are also exempt.

WHAT THE VOTE MEANS

If one, two or all three questions are approved by the voters, the City is only authorized to impose a single half cent (0.5%) sales tax increase for a maximum of 20 years or until enough sales tax revenue has been raised to pay for the costs of the voter-approved projects.



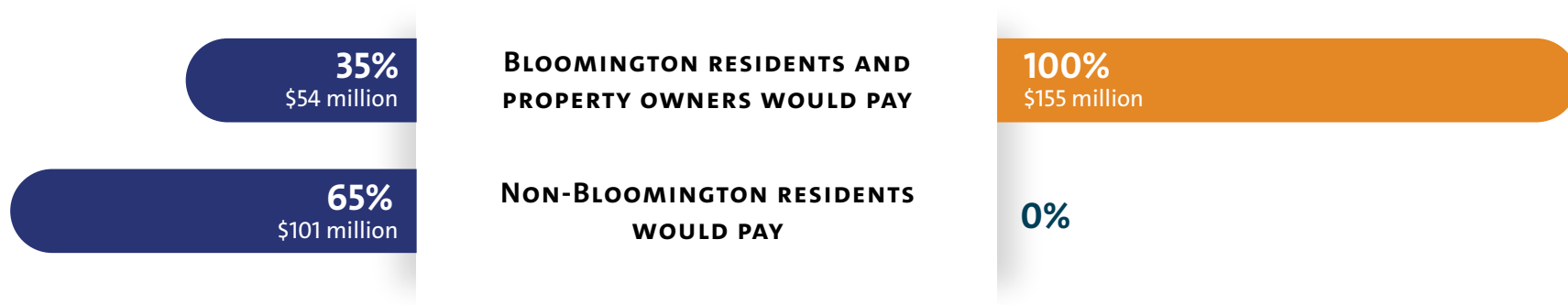
IN OUR COMMUNITY

SALES TAX VERSUS PROPERTY TAX BLOOMINGTON FORWARD INVESTMENT: \$155 MILLION

0.5% SALES TAX
(PROPOSED)



PROPERTY TAX
(RESIDENTIAL AND COMMERCIAL)



The State of Minnesota is providing \$4 million for these projects, making the total investment \$159 million. This illustration includes the latest data, as of September 15, from the University of Minnesota Extension.

BALLOT QUESTIONS

Here are the questions as they will appear on your ballot November 7.

QUESTION 1

SALES AND USE TAX FOR COMMUNITY HEALTH AND WELLNESS CENTER

Shall the City of Bloomington impose a one-half of one percent (0.5%) sales and use tax for up to 20 years for \$100 million plus the cost of interest and of issuing the bonds, to build a new Community Health and Wellness Center?

- Yes
- No

By voting “yes” on this question you are voting to increase the sales tax in Bloomington to pay for a new building and related updates that provides wellness and recreational activities and that replaces the existing Creekside Community Center and Public Health buildings. If one, two, or all three questions are approved by the voters, the City is only authorized to impose a single one-half of one percent (0.5%) sales and use tax increase for a maximum of 20 years or until enough sales tax revenue has been raised to pay for the costs of the voter-approved projects.

QUESTION 2

SALES AND USE TAX FOR BLOOMINGTON ICE GARDEN IMPROVEMENTS

Shall the City of Bloomington impose a one-half of one percent (0.5%) sales and use tax for up to 20 years for \$35 million plus the cost of interest and of issuing the bonds for improvements to the Bloomington Ice Garden (“BIG”)?

- Yes
- No

By voting “yes” on this question you are voting to increase the sales tax in Bloomington to pay for costs related to and improvements of mechanical, refrigeration, and roof systems, accessibility for people with disabilities, new locker rooms, ice sheets, training area, and spectator and concession spaces. If one, two, or all three questions are approved by the voters, the City is only authorized to impose a single one-half of one percent (0.5%) sales and use tax increase for a maximum of 20 years or until enough sales tax revenue has been raised to pay for the costs of the voter-approved projects.

QUESTION 3

SALES AND USE TAX FOR NINE MILE CREEK CORRIDOR RENEWAL

Shall the City of Bloomington impose a one-half of one percent (0.5%) sales and use tax for up to 20 years for \$20 million plus the cost of interest and of issuing the bonds for new construction and restoration of the Nine Mile Creek Corridor, including Moir and Central Parks?

- Yes
- No

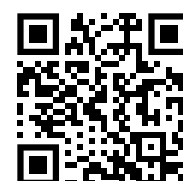
By voting “yes” on this question you are voting to increase the sales tax in Bloomington to pay for improvements including wetland and Nine Mile Creek restoration, new trails, boardwalks, and bridges, accessibility for people with disabilities, and new restrooms, park shelter, playground, and other facilities. If one, two, or all three questions are approved by the voters, the City is only authorized to impose a single one-half of one percent (0.5%) sales and use tax increase for a maximum of 20 years or until enough sales tax revenue has been raised to pay for the costs of the voter-approved projects.

DO YOU WANT TO LEARN MORE ABOUT BLOOMINGTON FORWARD?

City Manager Jamie Verbrugge is hosting two public information sessions on the Bloomington Forward plan in October. The first session will take place online (on Zoom) Wednesday, October 11, at 6:30 p.m. The following session will take place in-person on Tuesday, October 17, 6:30 p.m., in the Council Chambers, at Civic Plaza, 1800 West Old Shakopee Road. For more details, including the Zoom link, visit bloomingtonforward.org/info-sessions.

LEARN MORE

BLOOMINGTONFORWARD.ORG





BUST BUCKTHORN

Join the Sustainability Commission and Bloomington Park Maintenance staff in celebrating Halloween while busting invasive buckthorn along Nine Mile Creek at the 2023 Halloween Buckthorn Bust Saturday, October 28, 10 a.m. – 12 p.m., at Harrison Park, 1701 West 100th Street. The buckthorn bust will take place south of the Harrison Park parking lot along a paved trail.

Volunteer activities include cutting, pulling and hauling buckthorn. No experience is necessary. All instructions and equipment will be provided. Just bring your own work gloves, water bottle and shoes that you don't mind getting a little bit muddy. Costumes are welcome!

For more information and to register visit blm.mn/bustevent or contact Public Works Deputy Director Ellen Biales at 952-563-8730 or ebiales@BloomingtonMN.gov.

WHY WISH-CYCLING DOES MORE HARM THAN GOOD

In an era of increased environmental awareness, the concept of wish-cycling has gained prominence. Wish-cycling is the practice of putting non-recyclable items in the recycling cart in hopes that they can be recycled. When non-recyclable materials find their way to local recycling processing facilities, they disrupt machinery operations, pose harm to recycling workers and ultimately end up contributing to the residual waste that cannot be recycled. These are some commonly wish-cycled items:

- Plastic bags
- Scrap metal
- Bulky plastic items like laundry bins, plastic hangers and toys
- Pump dispenser tops
- Paper coffee cups

To avoid this problem, follow City recycling guidelines and properly sort materials. Find a detailed recycling acceptability list at blm.mn/recycling.



PROTECT YOURSELF AND OTHERS FROM THE FLU

Cold and flu season is on the way, and the best way to protect yourself and others from severe flu and possible hospitalization is getting an annual flu shot. If you have private health insurance, check out the flu shot offerings from your primary care provider or local pharmacy.

Bloomington Public Health also hosts several community flu shot clinics for individuals without good access to flu shots. Schedule your flu shot today at one of our community clinics at blm.mn/clinics. If you need help with making an appointment, call 952-563-8900 and select the option for flu vaccinations.

TURN IN UNUSED PRESCRIPTION DRUGS FOR SAFE DISPOSAL

The Bloomington Police Department is partnering with the U.S. Drug Enforcement Administration to host a drug take back event on Saturday, October 28, 10 a.m. – 2 p.m., at the Bloomington Police Department, 1800 West Old Shakopee Road.

The non-medical use of prescription drugs is a common form of drug abuse in America. Unused and expired prescription medications are a public safety issue. Proper disposal of unused drugs saves lives and protects the environment.

If you are unable to attend the drug take back event, many pharmacy medicine drop boxes are available in Bloomington for proper disposal. Some local drop boxes can be found at CVS, 8936 Lyndale Avenue, Fairview Pharmacy, 600 West 98th Street and Walgreens, 9800 Lyndale Avenue. Medicines should be brought to a medicine drop box for safe and proper disposal.

For more information and a full list of medicine drop boxes, visit hennepin.us/medicine.



ATTEND A FIRE STATION OPEN HOUSE FOR A FUN SATURDAY

Visit any of the six Bloomington fire station open houses Saturday, October 14, 10 a.m. – 1 p.m. Attendees will enjoy fun, food and fire prevention education. Station events include fire equipment demonstrations and plow truck displays. Fire stations host open houses every year during Fire Prevention Week.

You can find addresses for each of the stations online at blm.mn/fire. Questions? Call the Bloomington Fire Department at 952-563-4801.



THRILLS AWAIT ON THE TRICK-OR-TREAT TRAIL

Get ready for spooktacular fun, treats and live music at the third annual Trick-or-Treat Trail event Sunday, October 9, 2 – 5 p.m., at Normandale Lake Park, 5901 West 84th Street, with parking on Chalet Road.

Preschoolers through fifth graders accompanied by an adult can look forward to a lineup of delightful surprises along the trail, including live music, candy, food trucks and police and fire equipment displays. To ensure the smooth flow on the trail, which starts on Chalet Road. Children from preschool to second grade are invited to start between 2 – 3:30 p.m. Third through fifth graders are invited to start the trail between 3:30 – 5 p.m.

This free event is presented by Bloomington Parks and Recreation Department. For additional information, including weather updates, call 952-563-8877 or visit blm.mn/halloweenparty.

HIGH SCHOOL HOCKEY GEARS UP AT BIG

Anticipation is building as Bloomington Ice Garden hosts game nights for all Bloomington high school hockey teams. Family and friends can cheer for their favorite teams at the Bloomington Ice Garden, 3600 West 98th Street.

Supporters of the Kennedy boys, Jefferson boys and Jefferson girls high school hockey programs can typically catch games on Tuesday and Thursday nights. Junior varsity games begin at 5 p.m. and varsity games at 7 p.m. on weeknights. Saturday afternoon games will take place at 1 p.m. for junior varsity games and at 3 p.m. for varsity games.

The Jefferson girls teams have the first game of the year on November 9. The Kennedy boys teams have their first game November 28 and the Jefferson boys begin on November 30.

Stay up to date with the schedules for each team on the Minnesota State High School League webpage blm.mn/hockey.

Admission tickets are required and sold online at blm.mn/big-hs-tickets for \$7 per adult and \$5 per student or adults over 65. Popcorn, hot dogs, pretzels, nachos with cheese and a variety of beverages will be sold during games. For more information, contact BIG at 952-563-8841.



Photo courtesy Cyndi Nightengale.

FAMILY-FRIENDLY FUN: MEA MOVIE MATINEE AT CREEKSIDE

Mark your calendars for a delightfully spooky cinematic experience at the upcoming movie matinee on Thursday, October 19, at Creekside Community Center, 9801 Penn Avenue South. This event promises an afternoon of entertainment for all ages and provides the perfect opportunity to unwind during the Minnesota Education Association (MEA) break.

Doors will open at 1:30 p.m. Arrive early and save your seats. The screening will start at 1:45 p.m. Punctuality is encouraged. For the ultimate cozy movie-watching experience, attendees are invited to bring their own blankets and pillows. Complimentary popcorn will be available to all attendees.



FIND LOCAL GOODS AT THE WINTER FARMERS MARKET

As outdoor markets wind down, get ready for the indoor winter market in November, December, February and March. These markets will be hosted inside Civic Plaza, 1800 West Old Shakopee Road. You'll have the chance to explore an assortment of offerings including fresh apples, cheeses, root vegetables, baked and canned goods, handcrafted apparel, jewelry, gifts and more. Visitors can connect with other Bloomington residents and engage with local vendors.

Don't let winter discourage you from enjoying fresh produce and locally made products within your community. Visit blm.mn/market for more information and details on vendors.

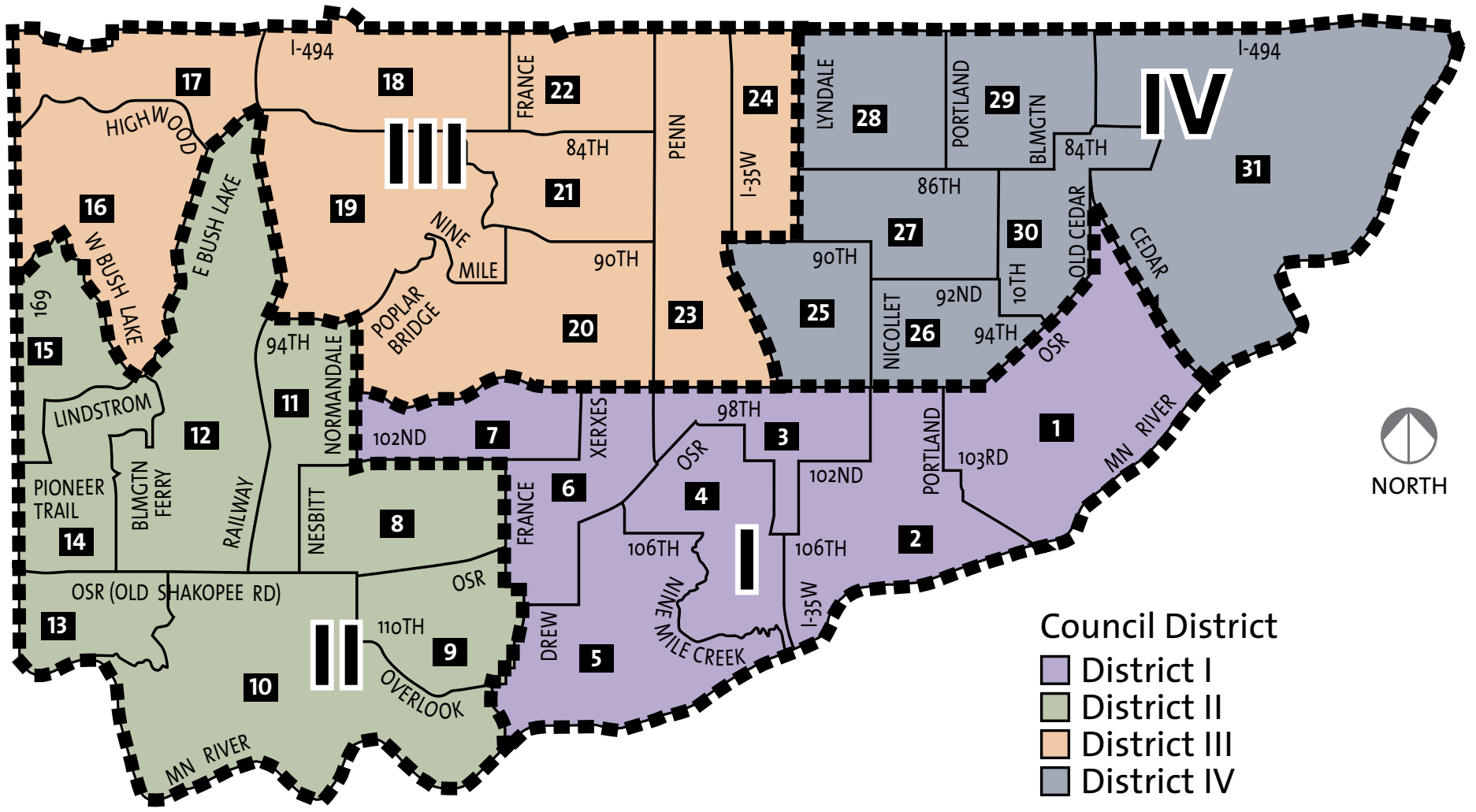
REGISTRATION OPEN FOR VETERANS APPRECIATION EVENT

American Legion Post #550 and the City of Bloomington are hosting their annual veterans appreciation event at Creekside Community Center, Wednesday, November 8, 9 a.m. – 12 p.m. Gifts can be picked up starting at 9 a.m. Entertainment and refreshments will be provided starting at 10 a.m. This a great opportunity for veterans to gather, connect and share stories!

To register, email Outreach@Bloomingtonmn.gov or call 952-563-8733, MN Relay 711. Must be a Bloomington veteran to register. Please provide the following information when registering: first and last name, military branch, what years served, address and contact information. Deadline to register is October 25. Space is limited.

2023 ELECTION GUIDE

POLLS ARE OPEN FROM 7 A.M. TO 8 P.M. ON ELECTION DAY, NOVEMBER 7. ALL POLLING PLACES ARE ACCESSIBLE.



Precinct/Polling location	Entrance/Parking
1 Atonement Lutheran Church 601 East Old Shakopee Road	Southwest entrance South lot
2 Grace Covenant Church 10201 Nicollet Avenue South	Southeast entrance East lot
3 St. Luke's Lutheran Church 1701 West Old Shakopee Road	Northeast entrance North lot
4 Oak Grove Presbyterian Church 2200 West Old Shakopee Road	Main entrance Northeast lot
5 Minnesota Valley Unitarian Universalist Fellowship 10715 Zenith Avenue South	Main entrance North lot
6 Mount Hope Lutheran Church 3601 West Old Shakopee Road	Main entrance (S) South lot
7 Crosspoint Church 9801 France Avenue South	Main entrance (E) East lot
8 Bloomington Covenant Church 10150 Xerxes Avenue South	Main entrance (E) East and north lots
9 Transfiguration Lutheran Church 11000 France Avenue South	Main entrance (W) West lot
10 MN Masonic Heritage Center 11411 Masonic Home Drive	Main entrance (W) West lot
11 Normandale Hylands United Methodist Church 9920 Normandale Boulevard South	Northeast entrance (left doors) North lot
12 Community of the Cross Lutheran Church 10701 Bloomington Ferry Road	Main entrance (N) North lot
13 Bethany Church 6900 Auto Club Road	West entrance West and north lots
14 Bloomington Lutheran School 10600 Bloomington Ferry Road	Main entrance (S) South lot ADA: East side
15 Hyland Vistors Center 10145 Bush Lake Road	West entrance West lot
16 Peace Lutheran Church 8600 East Bush Lake Road	Main entrance North lot
17 Westwood Community Church 6301 Cecilia Circle	Main entrance (W) Main lot (W)
18 St. Stephen Lutheran Church 8400 France Avenue South	Main entrance (W) West lot
19 The Church of St. Edward's 9401 Nesbitt Avenue South	Southwest entrance, upper lot Southwest lot
20 St. Michael's Lutheran Church 9201 Normandale Boulevard	Main entrance (E) East lot

Precinct/Polling location	Entrance/Parking
21 St. Mark's United Church of Christ 8630 Xerxes Avenue South	South entrance Southwest lot
22 Southtown Baptist Church 2600 West 82nd Street	Main entrance (W) Northwest lot
23 Bloomington City Hall 1800 West Old Shakopee Road	West entrance West lot
24 Christ the King Lutheran Church 8600 Fremont Avenue South	Southwest entrance Southwest lot
25 Oxboro Evangelical Free Church 9431 Nicollet Avenue South	North entrance North lot
26 Bloomington Lutheran Church 9350 Portland Avenue South	Main entrance North lot
27 St. Bonaventure Catholic Church 901 East 90th Street (Social Hall)	Main entrance East lot
28 Unity South Church 7950 1st Avenue South	Main entrance South lot
29 Portland Avenue United Methodist Church 8000 Portland Avenue South	Main entrance West lot
30 Cedar Valley Church 8600 Bloomington Avenue South	Door 4 West entrance South lot ADA: Door 1 East entrance
31 Minnesota Valley National Wildlife Refuge Visitor Center 3815 American Boulevard East	West entrance Visitor lot (W)

The City of Bloomington does not discriminate against or deny the benefits of its services, programs, or activities to a qualified person because of a disability. To make a request for a reasonable accommodation, ask for more information, or to file a complaint, contact the Community Outreach and Engagement Division, City of Bloomington, 1800 West Old Shakopee Road, Bloomington, MN 55431-3027; 952-563-8733, MN Relay 711.

HOW CAN I CAST MY BALLOT?

In the upcoming general election, Bloomington voters have three options for casting a ballot.

Bloomington residents can vote early, in-person Monday through Friday, 8 a.m. – 4:30 p.m., at Bloomington Civic Plaza, 1800 West Old Shakopee Road. Additional hours will be offered Saturday, November 4, 9 a.m. – 3 p.m., and Monday, November 6, 8 a.m. – 5 p.m.

Hennepin County issues all mailed absentee ballots. To request a mailed ballot, visit hennepin.us/elections. Mailed ballots can be returned to Hennepin County through the mail or returned in-person at Civic Plaza. All mail-in ballots must be received by 8 p.m. on Election Day, November 7.

On Election Day, you can cast your ballot at your polling place. Bloomington has 31 polling places located throughout the city. Where you live determines where you vote. To find your polling place location, visit mnvotes.org.

Minnesota has no-excuse absentee voting. This means that all eligible voters may vote early if they choose.